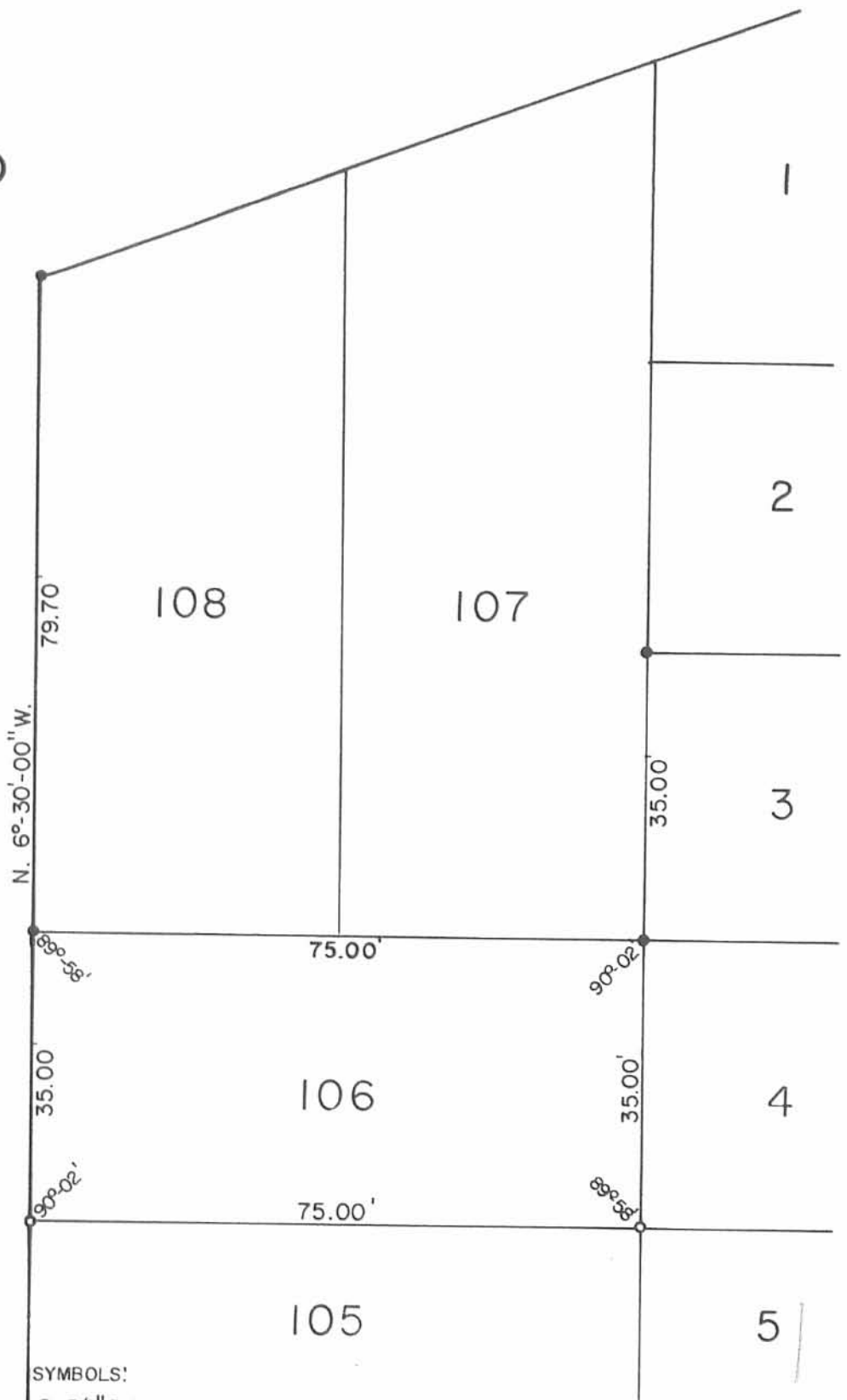


S. R. No. 235

1" Iron Pipe Fd.

Black Hawk Path - 35'



SYMBOLS:

- -5/8" Rebars Fd.
- -5/8"x30" Rebars Set.

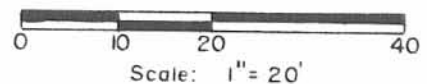
Reference:
Chippewa Park No. 1 - Slides 221-223.

INDEXED ON MAP
867.3 IP

Daniel E. Gilbert
 DANIEL E. GILBERT, P.S.
 REG. SUR. NO. 5402
 400 N. PARK ST.
 BELLEFONTAINE, OHIO 43311
 TELEPHONE: 1 (513) 593-1428

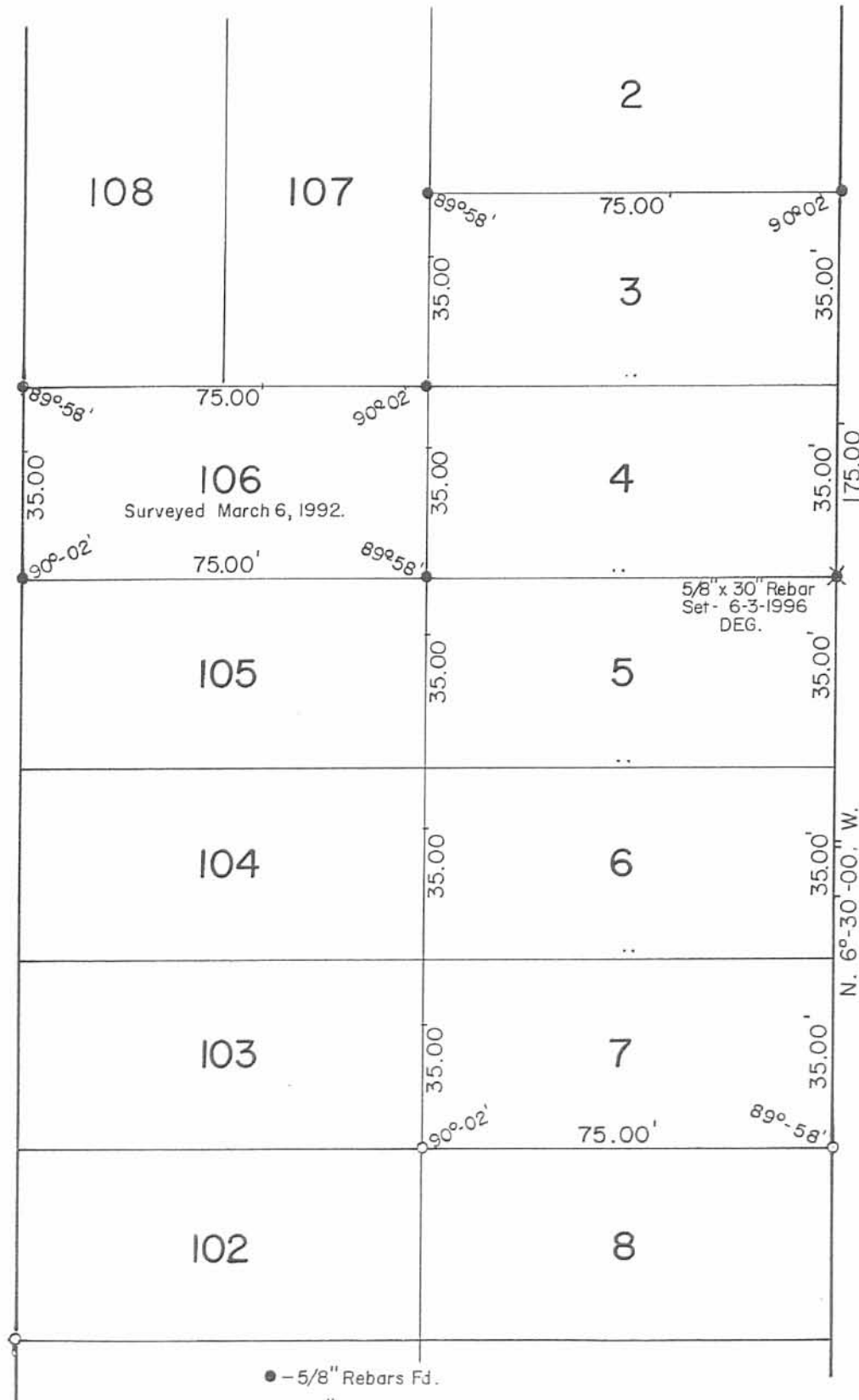


Stanley Survey
 Lot No. 106
 Chippewa Park No. 1
 Stokes Township
 Logan County, Ohio
 March 6, 1992



Black Hawk Path - 35'

Ash Path - 35'



5/8" x 30" Rebar
Set - 6-3-1996
DEG.

Reference:
Chippewa Park No. 1 - Slides 221-223.

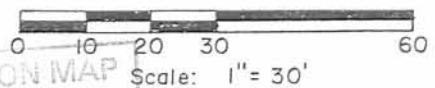
● - 5/8" Rebars Fd.
○ - 1/2" Iron Pipes Fd.

Hollanshead Survey
Lots No. 3, 4, 5, 6, 7
Chippewa Park No. 1
Stokes Township
Logan County, Ohio
June 8, 1992

Daniel E. Gilbert
DANIEL E. GILBERT, P.S.
REG. SUR. NO. 5402
400 N. PARK ST.
BELLFONTAINE, OHIO 43311
TELEPHONE: 1 (513) 593-1428



2P
INDEXED ON MAP
8673



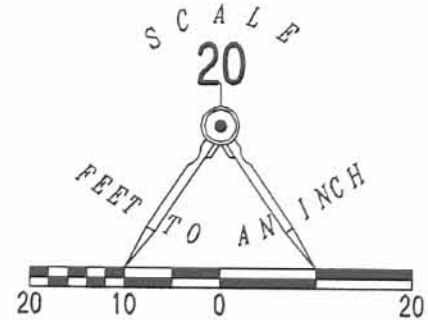
MAP ROOM

092-033

REC'D 8-16-06 SUM OK

235

(60')



BLACKHAWK PATH (35 FEET WIDE)

S 06°00'00" E

149.48'

N 84°02'43" E LOT 105

74.90' LOT 104

LOT 5

LOT 6

LEGEND

● 5/8 INCH IRON ROD SET

○ 5/8 INCH IRON ROD FOUND

LOT 104

LOT 103

LOT 6

LOT 7

ASSUMED BEARING
N 06°00'00" W

104.84'

104.84'

S 05°59'06" E

LOT 103

LOT 102

LOT 7

LOT 8

SEE DETAIL

74.87' LOT 102

S 84°02'32" W LOT 101

LOT 8

LOT 9

CHIPPEWA PARK # 1
PLAT CABINET A, SLIDE 221

A RETRACEMENT SURVEY OF
LOTS 102, 103 AND 104
CHIPPEWA PARK # 1
PLAT CABINET A, SLIDE 221
STOKES TOWNSHIP
LOGAN COUNTY, OHIO

SURVEYED BY:

JEFFREY J. LEE
PROFESSIONAL SURVEYOR 6359
AUGUST 15, 2006



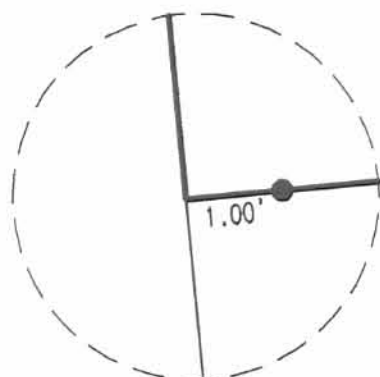
ORIGINAL STAMP IN GREEN

COPYRIGHT 2006 BY:
LEE SURVEYING & MAPPING CO., INC.
117 North Madriver Street
BELLEFONTAINE, OHIO 43311

(937) 593-7335

ADW 00806 4296086

L-4296086-3



DETAIL NOT TO SCALE

2 WORKING DAYS

BEFORE YOU DIG

CALL TOLL FREE 800-362-2764

OHIO UTILITIES PROTECTION SERVICE.

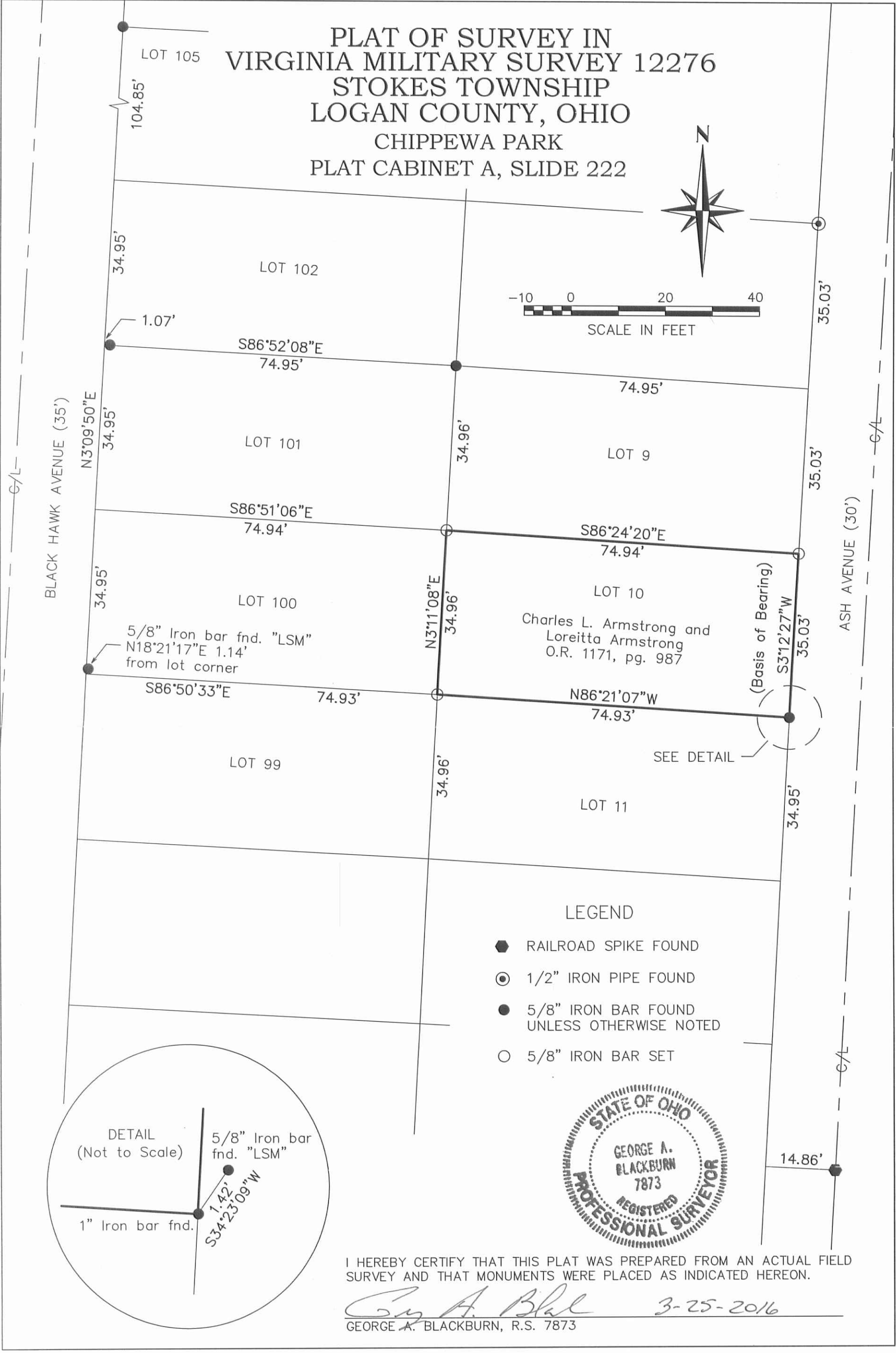
INDEXED ON MAP
8073

3P

4-1-14

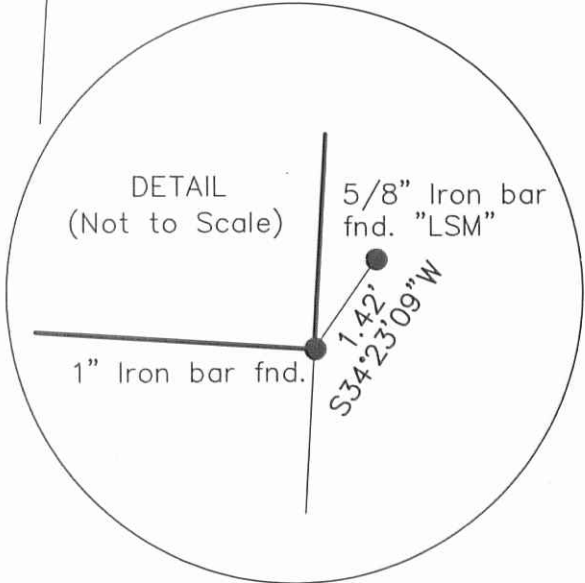
APPROVED

PLAT OF SURVEY IN
 VIRGINIA MILITARY SURVEY 12276
 STOKES TOWNSHIP
 LOGAN COUNTY, OHIO
 CHIPPEWA PARK
 PLAT CABINET A, SLIDE 222



LEGEND

- RAILROAD SPIKE FOUND
- ⊙ 1/2" IRON PIPE FOUND
- 5/8" IRON BAR FOUND UNLESS OTHERWISE NOTED
- 5/8" IRON BAR SET



I HEREBY CERTIFY THAT THIS PLAT WAS PREPARED FROM AN ACTUAL FIELD SURVEY AND THAT MONUMENTS WERE PLACED AS INDICATED HEREON.

George A. Blackburn 3-25-2016
 GEORGE A. BLACKBURN, R.S. 7873

BLACKBURN SURVEYING
 6879 STATE ROUTE 287
 WEST LIBERTY, OHIO 43357
 (937) 465-0424 (937) 666-5605

DATE: 3/25/2016
 SCALE: 1" = 20'
 FILE: CArmstrong 3-16
 F.B. 20, pg. 35

PLAT PREPARED FOR
 CHARLES AND LOREITTA ARMSTRONG

Sheet
 1
 of
 1

INDEXED ON MAP
 8673 4P