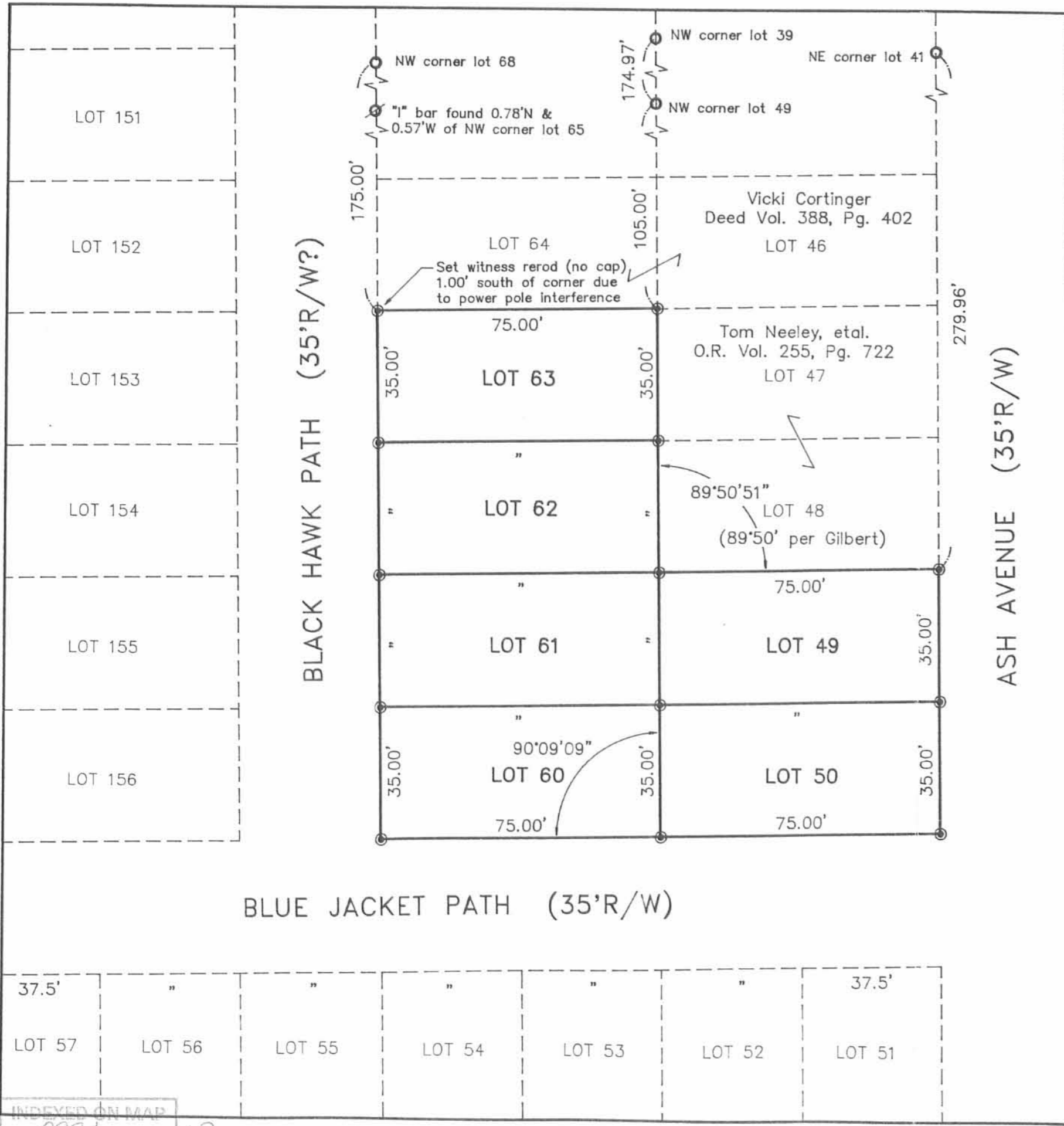
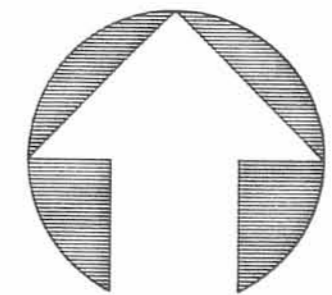


REC'D 3-15-95 SWY OK



**CHIPPEWA PARK # 1**  
 SURVEY OF  
 LOTS 49-50-60-61-62-63, AS  
 RECORDED IN PLAT CAB. A, SLIDE 222 & 223.  
 BEING A PART OF VIRGINIA MILITARY SURVEY #12276,  
 STOKES TOWNSHIP, LOGAN COUNTY, OHIO.



NORTH  
 GRAPHIC SCALE



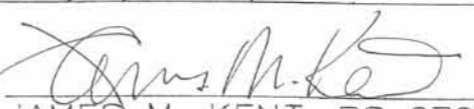
( IN FEET )  
 1 inch = 30 ft.



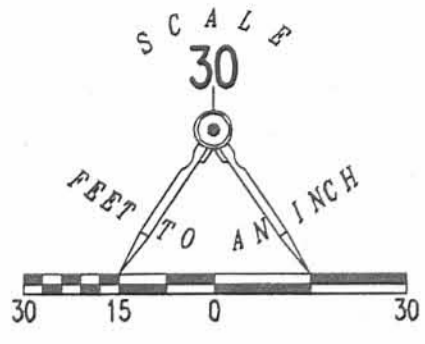
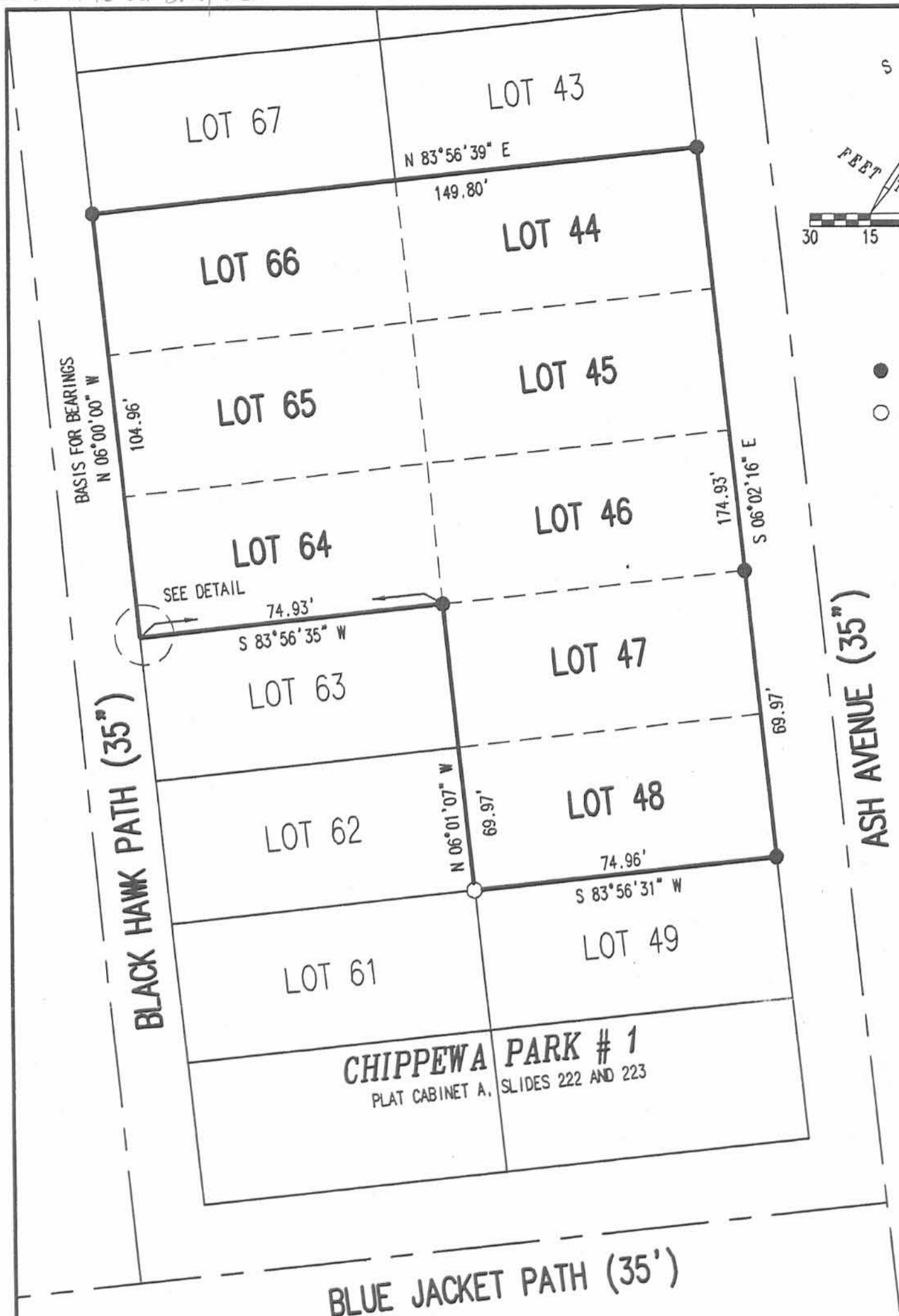
- LEGEND**
- 5/8"X30" re-rod w/cap (set)
  - ⊗ 1" "1" bar (found)
  - re-rod w/cap {Gilbert} (found)



Jim Clark Survey - O.R. Volume 242, Page 922

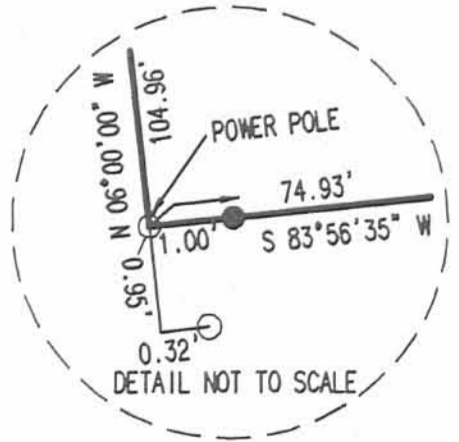
SCALE: 1" = 30'	APPROVED BY:	DRAWN BY: JMK
DATE: 3/14/95		REVISED:
 JAMES M. KENT, PS 6792 OH P.O. BOX 96, WAPAKONETA, OH 45895		DRAWING NUMBER: 2189

INDEXED ON MAP  
 8994 1P



LEGEND  
● 5/8 INCH IRON ROD SET  
○ 5/8 INCH IRON ROD FOUND

A SURVEY OF  
LOTS 64, 65, 66, 44, 45, 46, 47 AND 48  
CHIPPEWA PARK # 1  
PLAT CABINET A, SLIDES 222 AND 223  
VIRGINIA MILITARY SURVEY 12276  
STOKES TOWNSHIP  
LOGAN COUNTY, OHIO



SURVEYED BY:  
*[Signature]*  
JEFFREY I. LEE  
PROFESSIONAL SURVEYOR 6359  
APRIL 10, 2006

COPYRIGHT 2006 BY:  
LEE SURVEYING & MAPPING CO., INC.  
117 North Madriver Street  
BELLEFONTAINE, OHIO 43311  
(937) 593-7335

2 WORKING DAYS  
BEFORE YOU DIG  
CALL TOLL FREE 800-362-2764  
OHIO UTILITIES PROTECTION SERVICE.

INDEXED ON MAP  
2994