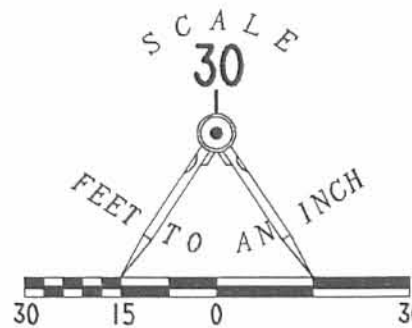
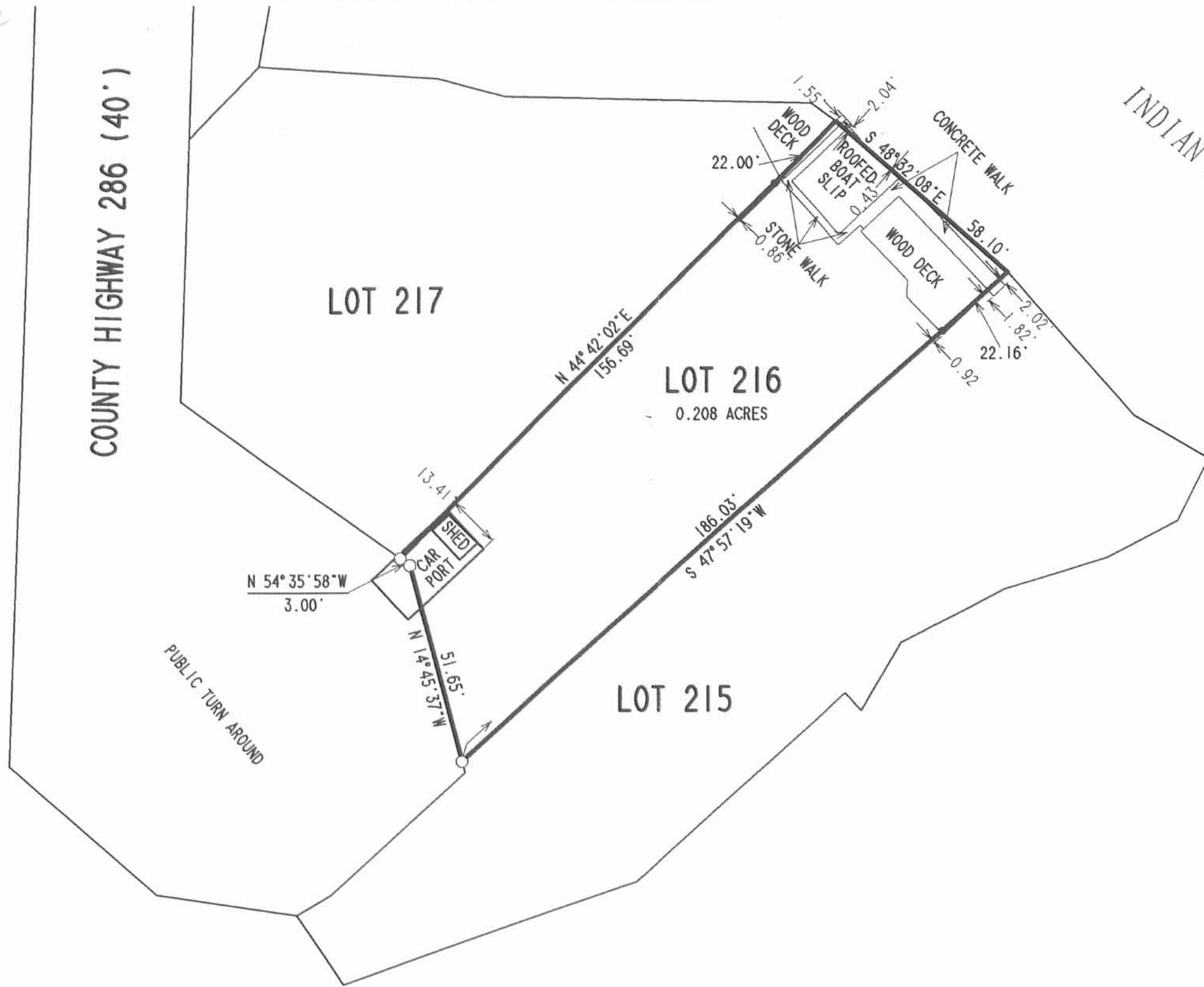


REC'D 9-11-95 SWM OK

REFERENCES

LOGAN COUNTY ENGINEER'S FILE:
INDIAN STATE LAKE
SHEET 25 OF 25



LEGEND

- 5/8" IRON ROD SET
- 5/8" IRON ROD FOUND

RETRACEMENT SURVEY OF THE
RICHARD N. KAPPEL. LOT 216
MINNEWAUKEN ISLAND
STOKES TOWNSHIP
LOGAN COUNTY, OHIO



SURVEYED BY:
[Signature]
JEFFREY I. LEE
PROFESSIONAL SURVEYOR 6359
SEPTEMBER 6, 1995

ORIGINAL STAMP IN GREEN

COPYRIGHT 1995 BY:
LEE SURVEYING & MAPPING
143 East Columbus Ave
BELLEFONTAINE, OHIO 43104
(513) 593-7335

D 265 KAPPEL

2 WORKING DAYS
BEFORE YOU DIG
CALL TOLL FREE **800-362-2764**
OHIO UTILITIES PROTECTION SERVICE.

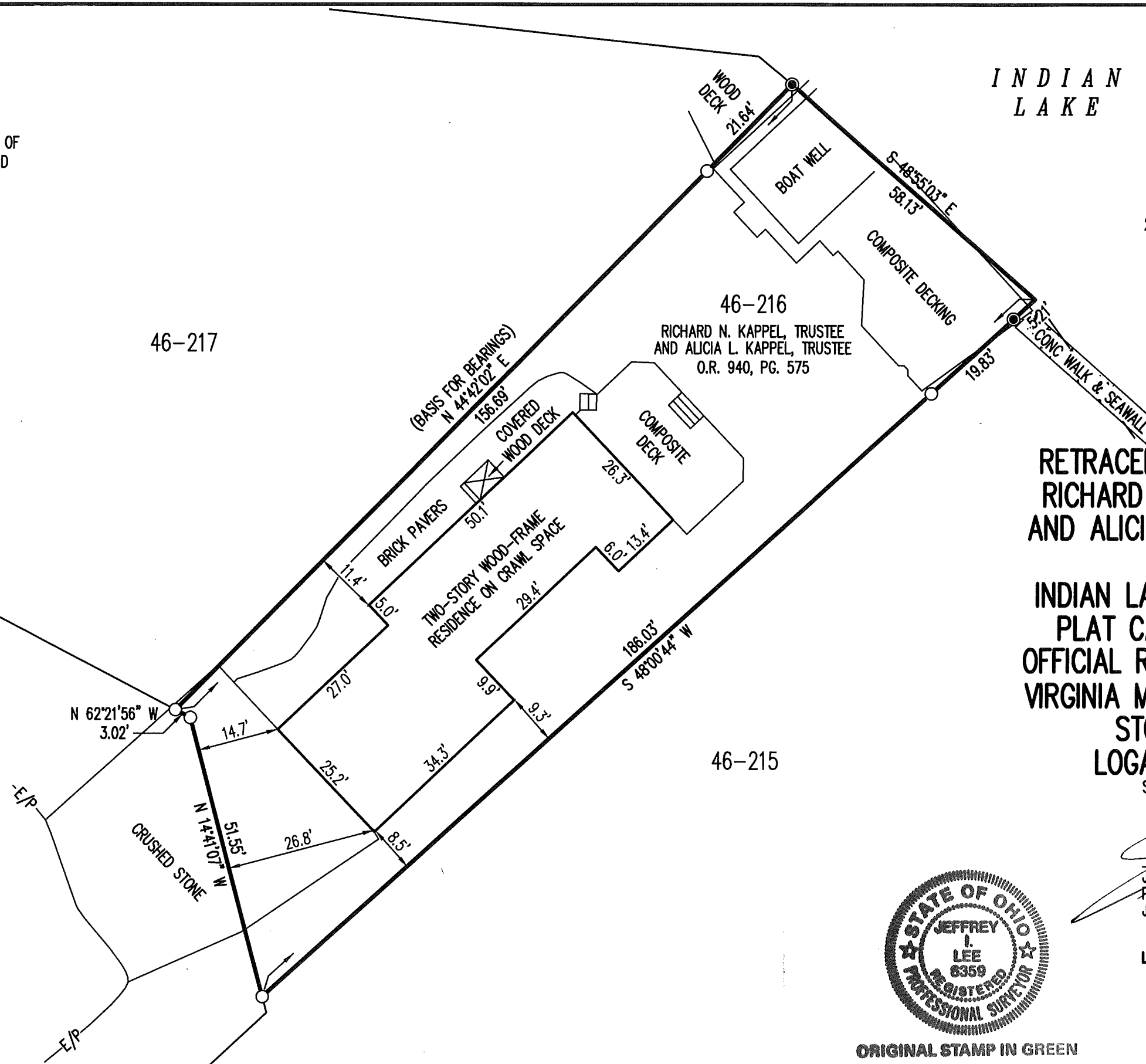
INDEXED ON MAP
9039 IP

7-12-17
APPROVED

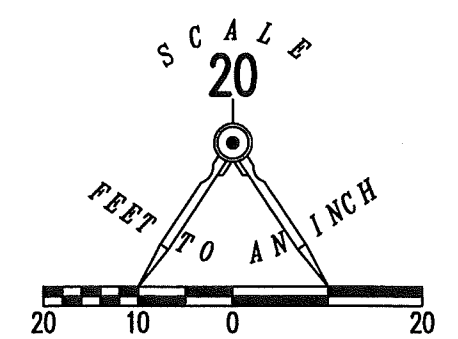
2 WORKING DAYS
BEFORE YOU DIG
CALL TOLL FREE **800-362-2764**
OHIO UTILITIES PROTECTION SERVICE.

THIS SURVEY WAS PREPARED IN THE ABSENCE OF
A COMPLETE AND ACCURATE TITLE SEARCH AND
DOES NOT GUARANTEE TITLE.

COUNTY HIGHWAY 286 (VARIABLE WIDTHS)



INDIAN LAKE



**RETRACEMENT SURVEY OF THE
RICHARD N. KAPPEL, TRUSTEE
AND ALICIA L. KAPPEL, TRUSTEE
LOT 46-216
INDIAN LAKE RESERVOIR LANDS
PLAT CABINET A, SLIDE 451
OFFICIAL RECORD 940, PAGE 576
VIRGINIA MILITARY SURVEY 12276
STOKES TOWNSHIP
LOGAN COUNTY, OHIO**

SURVEYED BY:

Jeffrey I. Lee
JEFFREY I. LEE
PROFESSIONAL SURVEYOR 6359
JULY 6, 2017



ORIGINAL STAMP IN GREEN

COPYRIGHT 2017 BY:
LEE SURVEYING & MAPPING CO., INC.
117 North Madriver Street
BELLEFONTAINE, OHIO 43311
(937) 593-7335
WWW.LSMINC.US
surveys@lsminc.us

KSS D0617 23270617 L-2327-3

INDEXED ON MAP
9039