

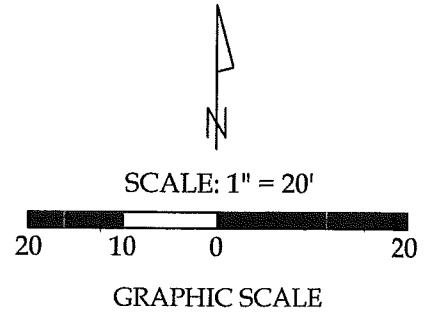
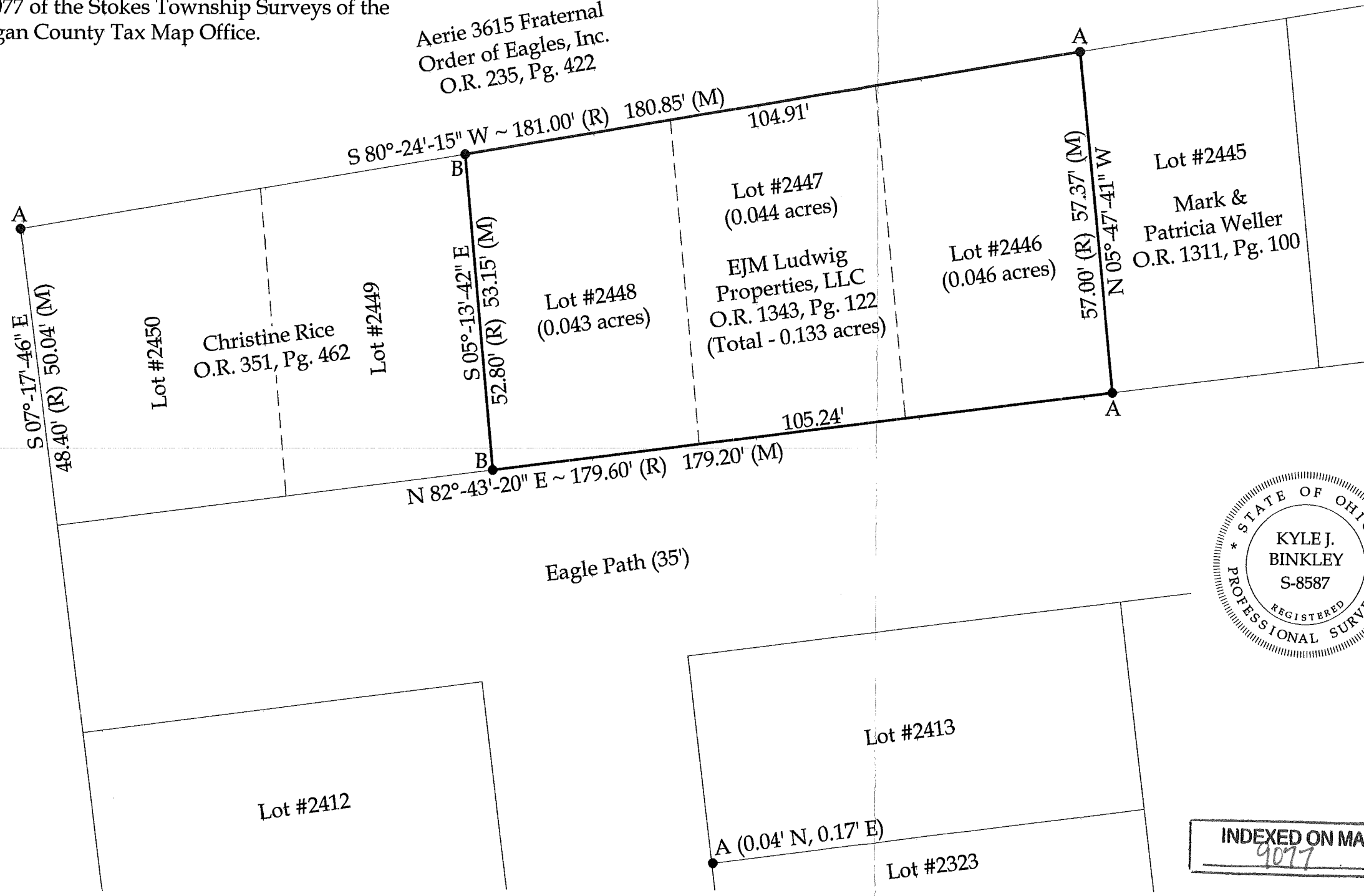
Survey of Parcels #43-005-13-01-003-002, 43-005-13-01-003-001 & 43-005-13-01-003-000 and being Lots #2246, 2247 and 2248 of Chippewa Park No. 3 (P.C. A, Slide 235) in V.M.S. #12276, Stokes Township, Logan County, Ohio.

(Deed Referenced in O.R. 1343, Pg. 122)

Surveyor's Note

Lot lines were established based on physical monumentation found and referencing Survey #9077 of the Stokes Township Surveys of the Logan County Tax Map Office.

Aerie 3615 Fraternal Order of Eagles, Inc. O.R. 235, Pg. 422



Legend

A = Existing #5 Rebar
B = Set #5 Rebar



This plat represents an actual boundary survey completed under my direct supervision on August 30, 2019.

Kyle J. Binkley
Kyle J. Binkley, P.S. #8587

INDEXED ON MAP
9077

BASIS OF BEARINGS : The system of bearings for this plat and legal description is based on the Ohio State Plane - North Coordinate System NAD83 (2011).

NOTE: All distances on this plat are measured unless otherwise noted.

CLIENT: Eric Ludwig			
SURVEYED BY: T.J.S./T.E.W.	DATE: 08-30-2019	DRAWN BY: K.J.B.	CHECKED BY: K.J.B.
SCALE: 1" = 20'	PAGE: 1	OF: 1	PAGES: 1