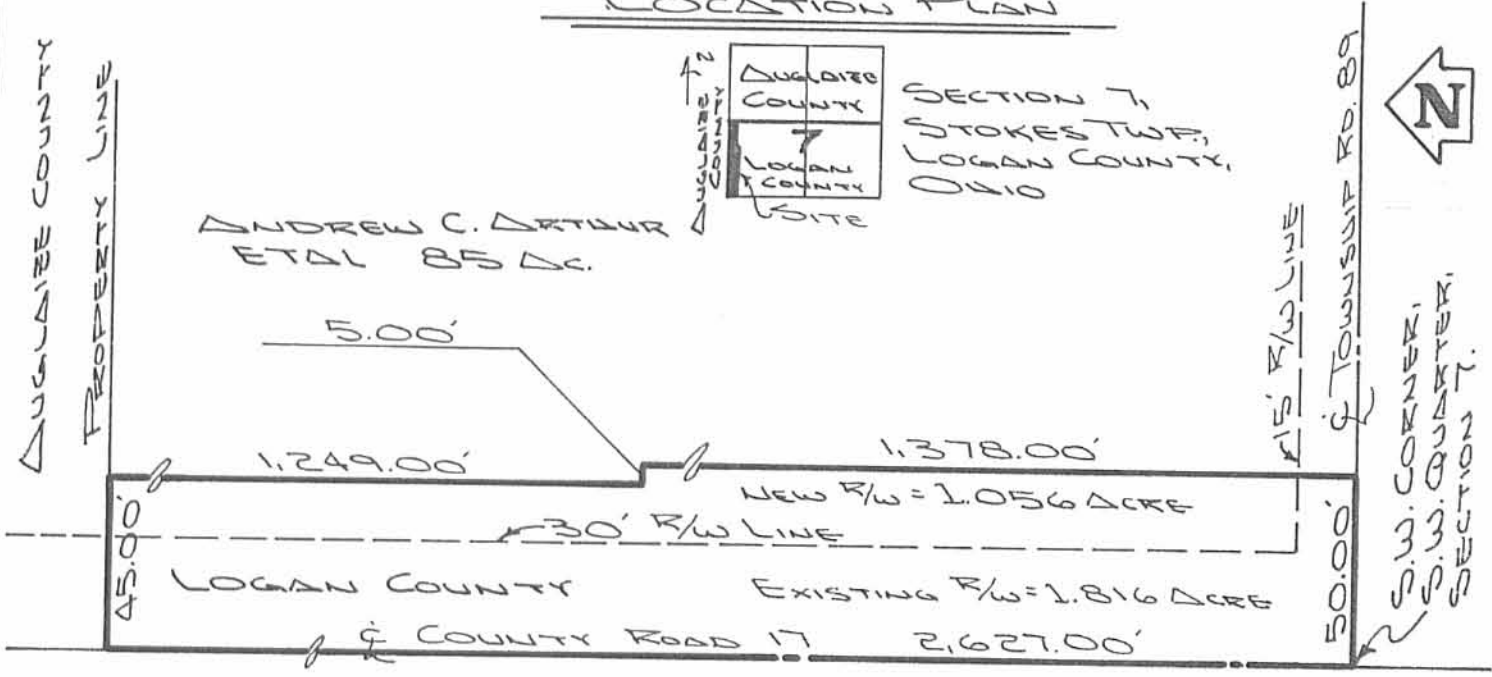


LOCATION PLAN



AUGLAIZE COUNTY

EASEMENT FOR HIGHWAY PURPOSES

The following described tract of land is part of Section 7, Town 6 South, Range 8 East, Stokes Township, Logan County, Ohio and is more particularly described as follows:

The **PLACE OF BEGINNING** is at the intersection of the centerlines of Township Road 89 and Logan County Road 17;  
 thence Northerly along the centerline of County Road 17 and the Logan - Auglaize County line, a distance of 2,627.00 feet to a point;  
 thence Easterly along the North line of the Southwest Quarter of Section 7, Stokes Township and the North property line of the Andrew Clay Arthur, Jr. property, a distance of 45.00 feet to a point;  
 thence in a Southerly direction, parallel to the East right-of-way line of County Road 17, a distance of 1,249.00 feet to a point;  
 thence Easterly, parallel to the centerline of Township Road 89 and the South line of the Southwest Quarter of said Section 7, a distance of 5.00 feet to a point;  
 thence in a Southerly direction, parallel to the East right-of-way line of County Road 17, a distance of 1,378.00 feet to a point;  
 thence Westerly along the centerline of Township Road 89 and the South line of the Southwest Quarter of Section 7, Stokes Township, a distance of 50.00 feet to a point which was the true **PLACE OF BEGINNING**.

Containing in all 2.872 acre of which 1.056 acre is additional right-of-way.



ATTEST: John W. Jauert  
 John W. Jauert  
 Professional Surveyor No. 6920

Signature by a representative of the County Health Dept. denotes compliance with Health Regulations. Signed: _____ Date _____	Signature by a representative of the Auglaize County Regional Planning Commission denotes approval of this plat. Signed: _____ Date _____
Signature by a representative of City with 3 mile limit jurisdiction or Twp. Trustees or Village with zoning jurisdiction denotes approval of this plat. Signed: _____ for political S.D. of: _____ Date _____	Signature by a representative of the County Engineer's Dept. denotes that this plat meets tax map plat requirements. Signed: _____ Date _____

Client AUGLAIZE COUNTY ENGINEER'S OFFICE  
 County LOGAN Twp. STOKES Sec. 7  
 Drawn by J. JAUERT Scale 1"=50' Drwg. No. \_\_\_\_\_  
 Checked by \_\_\_\_\_ Date OCT. 18<sup>TH</sup>, 1990  
 Sheet 1 of 1 (T. 6 S.; R. 8 E)

9002 IP

REC'D 5-6-10 SMM/OK

# Lee Surveying and Mapping Co., Inc.

Land Surveys • Topography • Subdivisions • Construction Layout

117 N. Madriver St.  
Bellefontaine OH 43311



Phone: (937) 593-7335  
Fax: (937) 593-7444  
surveys@lsminc.us

## HOLYCROSS, TRUSTEE AND ARTHUR 84.843 ACRES

Lying in Section 7, Town 6, Range 8, Stokes Township, Logan County, Ohio.

Being out of the Carolyn J. Holycross, Trustee 85 acre tract as deeded and described in Official Record 838, Page 405 and the A. Clay Arthur, Jr., 85 acre tract as deeded and described in Official Record 504, Page 666 and Volume 405, Page 305 of the Logan County Records of Deeds and being more particularly described as follows:

Beginning on a PK nail found on the southwest corner of Section 7 on the center-line of County Highway 17 (Santa Fe Line Road) and on a west line of Logan County and an east line of Auglaize County.

THENCE, with the west line of Section 7, the center-line of County Highway 17 (variable widths) and a west line of Logan County and an east line of Auglaize County, N 00°-12'-23"E, a distance of 1335.40 feet to a MAG nail set.

THENCE, S 89°-06'-25"E, a distance of 289.94 feet to a 5/8 inch iron rod set, passing a 5/8 inch iron rod set at 50.00 feet.

THENCE, N 01°-04'-25"E, a distance of 324.59 feet to a 5/8 inch iron rod set.

THENCE, S 86°-50'-23"W, a distance of 44.31 feet to a 5/8 inch iron rod set.

THENCE, S 53°-59'-22"W, a distance of 111.04 feet to a 5/8 inch iron rod set.

THENCE, S 65°-48'-46"W, a distance of 54.12 feet to a 5/8 inch iron rod set.

THENCE, S 02°-42'-01"E, a distance of 46.70 feet to a 5/8 inch iron rod set.

THENCE, S 89°-55'-56"W, a distance of 114.08 feet to a MAG nail set on the west line of Section 7, the center-line of County Highway 17 and a west line of Logan County and an east line of Auglaize County, passing a 5/8 inch iron rod set at 69.08 feet.

THENCE, with the west line of Section 7, the center-line of County Highway 17 and a west line of Logan County and an east line of Auglaize County, N 00°-12'-23"E, a distance of 1133.46 feet to a PK nail found at the northwest corner of the southwest quarter of Section 7 on a north line of Logan County and a south line of Auglaize County.

THENCE, with the north line of the southwest quarter of Section 7 on a north line of Logan County and a south line of Auglaize County and the south line of the Sharon Jones and Larry Williams 80 acre tract (O.R. 141, Pg. 260-Auglaize County), N 89°-44'-28"E, a distance of 1623.43 feet to a point in Swartz Ditch, passing 5/8 inch iron rods found at 45.00 feet and 1603.43 feet.

THENCE, with the center of Swartz Ditch and the west lines of the Ronald A. Taylor and Sharon L. Fuelling 141.416 acre tract (O.R. 403, pg. 260), the following five courses:

S 16°-44'-04"E, a distance of 26.44 feet to a point, referenced by a 5/8 inch iron rod set bearing S 81°-27'-37"W, a distance of 20.00 feet.

S 08°-32'-20"E, a distance of 41.83 feet to a point, referenced by a 5/8 inch iron rod set bearing S 81°-27'-36"W, a distance of 20.00 feet.

INDEXED ON MAP  
9082 2D-1

# Lee Surveying and Mapping Co., Inc.

Land Surveys • Topography • Subdivisions • Construction Layout

117 N. Madriver St.  
Bellefontaine OH 43311



Phone: (937) 593-7335  
Fax: (937) 593-7444  
surveys@lsminc.us

S 00°-50'-48"E, a distance of 1149.97 feet to a point, referenced by a 5/8 inch iron rod set bearing N 73°-43'-38"W, a distance of 20.00 feet.

S 16°-16'-23"W, a distance of 44.14 feet to a point, referenced by a 5/8 inch iron rod set bearing N 73°-43'-38"W, a distance of 20.00 feet.

S 31°-46'-04"W, a distance of 1640.52 feet to a MAG nail set on the south line of Section 7 on the center-line of Township Road 89.

THENCE, with the south line of Section 7 and the center-line of Township Road 89 (60 feet wide), S 89°-34'-27"W, a distance of 787.74 feet to the point of beginning.

Containing 84.843 acres, of which 3.218 acres are within the highway rights-of-way.

Property is subject to any and all previous easements and rights-of-way of record.

The basis for bearings is the west line of Section 7, being N 00°-12'-23"E, and all other bearings are from angles and distances measured in a field survey by Lee Surveying and Mapping Co., Inc. on April 29, 2010.



Description prepared by:

*William K. Bruce*

William K. Bruce  
Professional Surveyor 7437  
April 30, 2010

4948410



REC ID 5-6-10 SMJ QK

# Lee Surveying and Mapping Co., Inc.

Land Surveys • Topography • Subdivisions • Construction Layout

117 N. Madriver St.  
Bellefontaine OH 43311



Phone: (937) 593-7335  
Fax: (937) 593-7444  
surveys@lsminc.us

## HOLYCROSS, TRUSTEE AND ARTHUR 1.649 ACRES

Lying in Section 7, Town 6, Range 8, Stokes Township, Logan County, Ohio.

Being out of the Carolyn J. Holycross, Trustee 85 acre tract as deeded and described in Official Record 838, Page 405 and the A. Clay Arthur, Jr., 85 acre tract as deeded and described in Official Record 504, Page 666 and Volume 405, Page 305 of the Logan County Records of Deeds and being more particularly described as follows:

Commencing on a PK nail found on the southwest corner of Section 7 on the center-line of County Highway 17 (Santa Fe Line Road) and on a west line of Logan County and an east line of Auglaize County.

THENCE, with the west line of Section 7, the center-line of County Highway 17 (variable widths) and a west line of Logan County and an east line of Auglaize County, N 00°-12'-23"E, a distance of 1335.40 feet to a MAG nail set at the TRUE POINT OF BEGINNING.

THENCE, with the west line of Section 7, the center-line of County Highway 17 and a west line of Logan County and an east line of Auglaize County, N 00°-12'-23"E, a distance of 183.33 feet to a MAG nail set.

THENCE, N 89°-55'-56"E, a distance of 114.08 feet to a 5/8 inch iron rod set, passing a 5/8 inch iron rod set at 45.00 feet.

THENCE, N 02°-42'-01"W, a distance of 46.70 feet to a 5/8 inch iron rod set.

THENCE, N 65°-48'-46"E, a distance of 54.12 feet to a 5/8 inch iron rod set.

THENCE, N 53°-59'-22"E, a distance of 111.04 feet to a 5/8 inch iron rod set.

THENCE, N 86°-50'-23"E, a distance of 44.31 feet to a 5/8 inch iron rod set.

THENCE, S 01°-04'-25"W, a distance of 324.59 feet to a 5/8 inch iron rod set.

THENCE, N 89°-06'-25"W, a distance of 289.94 feet to the point of beginning, passing a 5/8 inch iron rod set at 239.94 feet.

Containing 1.649 acres, of which 0.195 acre is within the highway rights-of-way.

Property is subject to any and all previous easements and rights-of-way of record.

The basis for bearings is the west line of Section 7, being N 00°-12'-23"E, and all other bearings are from angles and distances measured in a field survey by Lee Surveying and Mapping Co., Inc. on April 29, 2010.



ORIGINAL STAMP IN GREEN

Description prepared by:

*William K. Bruce*

William K. Bruce  
Professional Surveyor 7437  
April 30, 2010



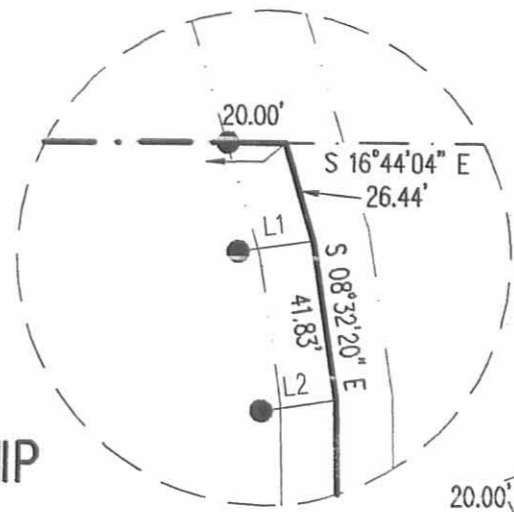
4948410

REC'D 5-6-10 SMY OK

LINE	BEARING	DISTANCE
L1	S 81°27'37" W	20.00'
L2	S 81°27'36" W	20.00'
L3	N 73°43'38" W	20.00'
L4	N 73°43'38" W	20.00'

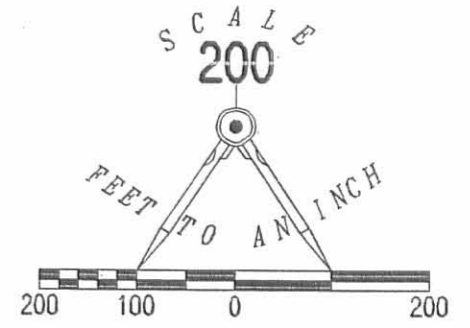
SHARON JONES AND  
LARRY WILLIAMS  
80 ACRES  
O.R. 141, PG. 260

**DETAIL**  
NOT TO SCALE



LEGEND:

- 1 INCH IRON ROD FOUND IN MONUMENT BOX
- STONE FOUND IN MONUMENT BOX
- ⊗ PK NAIL FOUND
- △ "T" POST FOUND
- ⊙ 1 INCH IRON ROD FOUND
- MAG NAIL SET
- 5/8 INCH IRON ROD SET WITH I.D. CAP STAMPED "LSM 7437"



AUGLAIZE COUNTY, GOSHEN TOWNSHIP

LOGAN COUNTY, STOKES TOWNSHIP

SANTA FE LINE ROAD

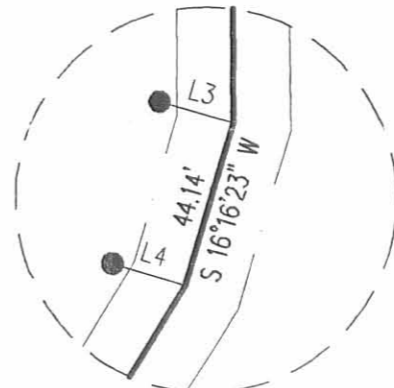
COUNTY HIGHWAY 17 (VARIABLE WIDTHS)

RONALD A. TAYLOR AND  
SHARON L. FUELLING  
141.416 ACRES  
O.R. 403, PG. 260

**84.843 ACRES**

OF WHICH 3.218 ACRES ARE WITHIN  
THE HIGHWAY RIGHTS-OF-WAY

CAROLYN J. HOLYCROSS, TRUSTEE  
85 ACRES  
O.R. 838, PG. 405  
AND  
A. CLAY ARTHUR, JR.  
85 ACRES  
O.R. 504, PG. 666  
VOL. 405, PG. 305



**DETAIL**  
NOT TO SCALE

AUGLAIZE COUNTY, CLAY TOWNSHIP  
(BASIS FOR BEARINGS)

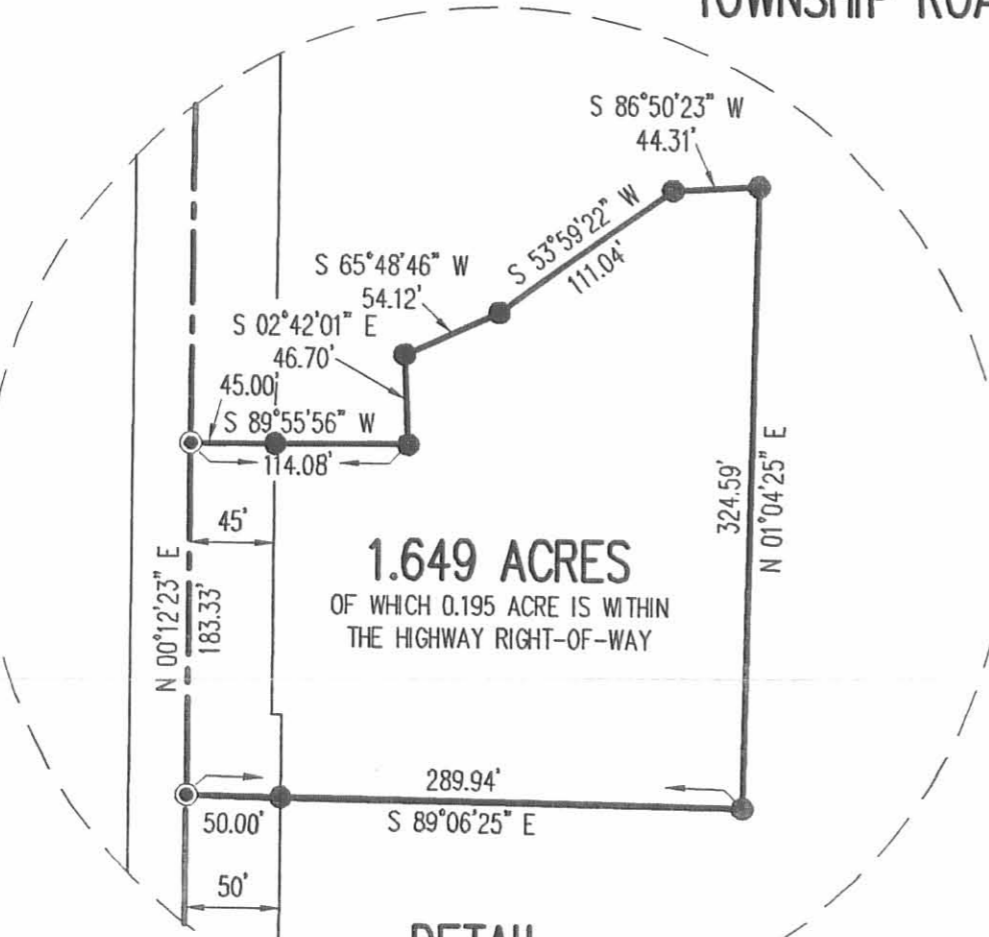
LOGAN COUNTY, STOKES TOWNSHIP

SWARTZ DITCH

TOWNSHIP ROAD 86

TOWNSHIP ROAD 89 (60')

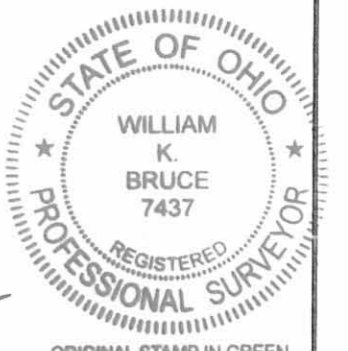
RETRACEMENT SURVEY OF THE  
CAROLYN J. HOLYCROSS, TRUSTEE  
85 ACRE TRACT  
OFFICIAL RECORD 838, PAGE 405  
AND  
A. CLAY ARTHUR, JR.  
85 ACRE TRACT  
OFFICIAL RECORD 504, PAGE 666  
VOLUME 405, PAGE 305  
AND SURVEY OF 1.649 ACRES  
OUT OF SAID 85 ACRE TRACT  
SECTION 7, TOWN 6, RANGE 8  
STOKES TOWNSHIP  
LOGAN COUNTY, OHIO



**DETAIL**  
NOT TO SCALE

SURVEYED BY:

*William K. Bruce*  
WILLIAM K. BRUCE  
PROFESSIONAL SURVEYOR 7437  
APRIL 29, 2010



COPYRIGHT 2010 BY:  
LEE SURVEYING & MAPPING CO., INC.  
117 North Madriver Street  
BELLEFONTAINE, OHIO 43311  
(937) 593-7335  
surveys@lsmcinc.us

KSS D0410 4948410 L-4948-2

2 WORKING DAYS  
**BEFORE YOU DIG**  
CALL TOLL FREE 800-362-2764

INDEXED ON MAP  
9082 2P

9-1-16

APPROVED

Judith Day-Barringer  
Page 2 of 2  
August 06, 2016

**LEGAL DESCRIPTION**

Being a part of the Judith Day-Barringer, Trustee 84.843 acre tract (Deed Reference O.R. 994, Pg. 739) and being a part of the SW ¼ of Section 7, Town 6 South, Range 8 East, Stokes Township, Logan County, Ohio, more particularly described as follows:

Commencing at an existing Railroad Spike at the SW corner of Section 7; thence N 01°-15'-16" E with the W line of Section 7 and the Auglaize & Logan County line (centerline of Logan County Road 17), 1518.73' to a Mag Nail set at the POINT OF BEGINNING; thence the following courses:

1. Continuing N 01°-15'-16" E with said W section line, County line and the centerline of Logan County Road 17, 137.90' to a set Mag Nail;
2. S 88°-44'-44" E, 292.94' to an existing #5 Rebar, passing a #5 Rebar set at 45.00';
3. S 87°-50'-40" W with the N line of the Carl Lichtenberg 1.649 acre tract (O.R. 1104, Pg. 530), 44.37' to an existing #5 Rebar;
4. S 54°-57'-49" W with the N line of said 1.649 acre tract, 111.04' to an existing #5 Rebar;
5. S 66°-49'-22" W with the N line of said 1.649 acre tract, 54.13' to an existing #5 Rebar;
6. S 01°-43'-31" E with the N line of said 1.649 acre tract, 46.67' to an existing #5 Rebar;
7. N 89°-01'-20" W with the N line of said 1.649 acre tract, 112.29' to the POINT OF BEGINNING, passing a set #5 Rebar at 67.29.

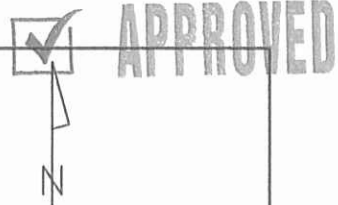
The above described parcel contains 0.513 acres, more or less, of which 0.142 acres are occupied by road right-of-way, subject to all legal highways and easements of record.

The system of bearings for this legal description is based on the Ohio State Plane-North Coordinate System NAD83 (2011). This legal description and accompanying plat represent an actual boundary survey completed under the direct supervision of Kyle J. Binkley, P.S. #8587 on August 06, 2016. All markers called for above are in place.



*[Handwritten signature]*

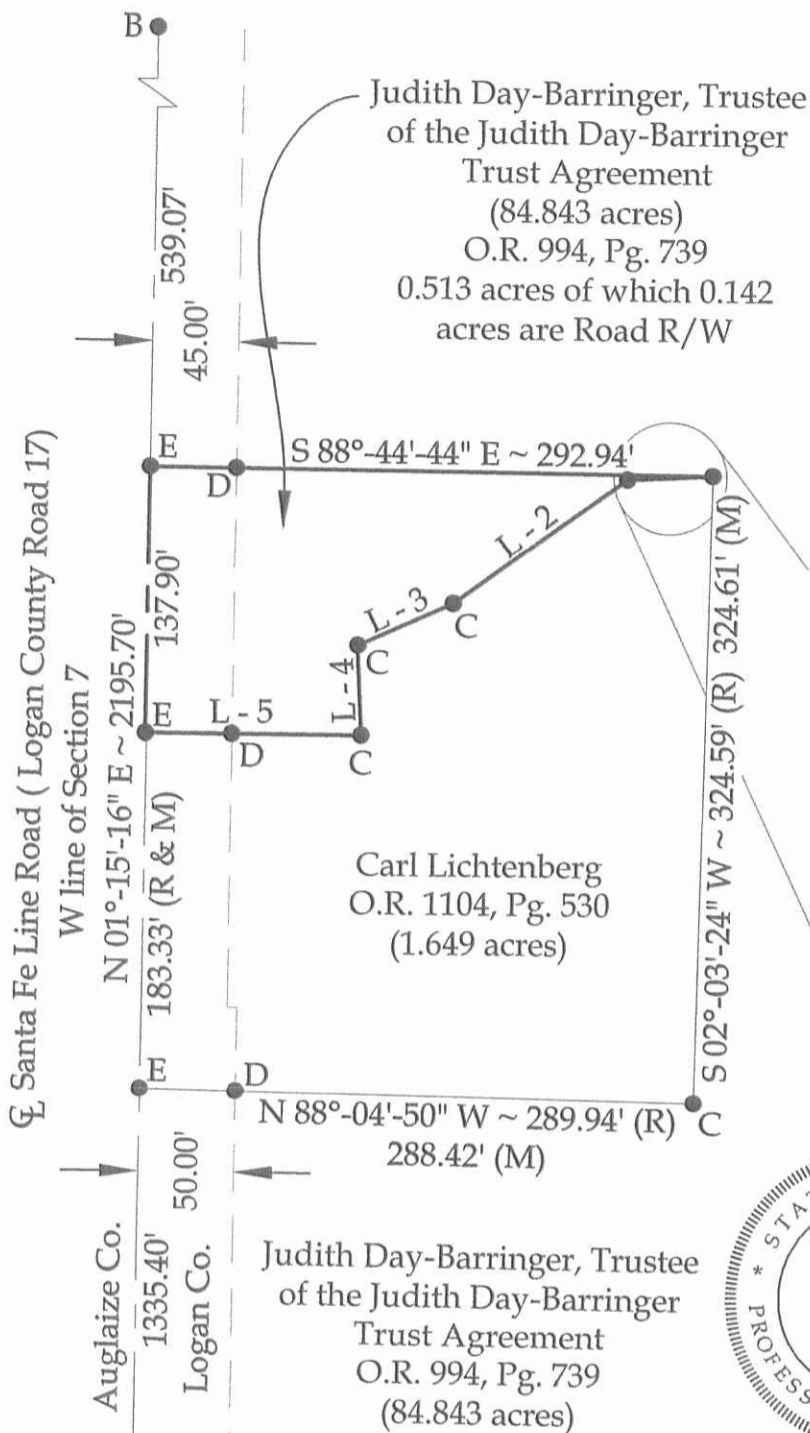
INDEXED ON MAP  
9082 3D



Survey of Parcel #46-002-00-00-001-000 & part of Parcel #46-002-00-00-001-001 and being a part of the SW 1/4 of Section 7, Town 6 South, Range 8 East, Stokes Township, Logan County, Ohio.

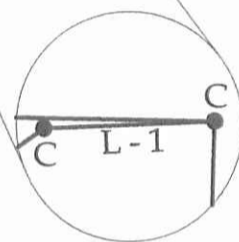
(Prior Deeds Referenced in O.R. 1104, Pg. 530 & O.R. 994, Pg. 739)

SCALE: 1" = 100'



Legend

- A = Existing Railroad Spike at the SW corner of Section 7
- B = Existing #6 Rebar in a Monument Box at the SE corner of the NE 1/4 of Section 12, Clay Township, Auglaize County
- C = Existing #5 Rebar
- D = Set #5 Rebar
- E = Set Mag Nail
- R = Record
- M = Measured



INDEXED ON MAP  
9082 3P

This plat represents an actual boundary survey completed under my direct supervision on August 06, 2016.

- L - 1 = S 87°-50'-40" W ~ 44.31' (R) 44.37' (M)
- L - 2 = S 54°-57'-49" W ~ 111.04' (R & M)
- L - 3 = S 66°-49'-22" W ~ 54.12' (R) 54.13' (M)
- L - 4 = S 01°-43'-31" E ~ 46.70' (R) 46.67' (M)
- L - 5 = N 89°-01'-20" W ~ 114.08' (R) 112.29' (M)

Note:  
All distances shown are measured unless otherwise noted.

**BASIS OF BEARINGS :** The bearings on this plat are based on the Ohio State Plane - North Coordinate System NAD83 (2011).

*Kyle J. Binkley*  
Kyle J. Binkley, P.S. #8587

**Binkley**  
LAND SURVEYING, LLC

121 W. Auglaize Street  
Wapakoneta, Ohio 45895  
(419) 236-3768

CLIENT: Judith Day-Barringer			
SURVEYED BY: K.J.B.	DATE: 08-06-2016	DRAWN BY: K.J.B.	CHECKED BY: K.J.B.
SCALE: 1" = 100'		PAGE 1	OF PAGES 2