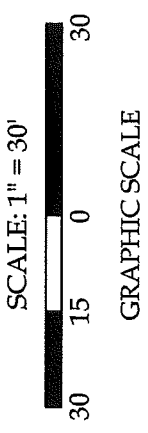
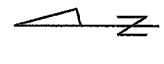
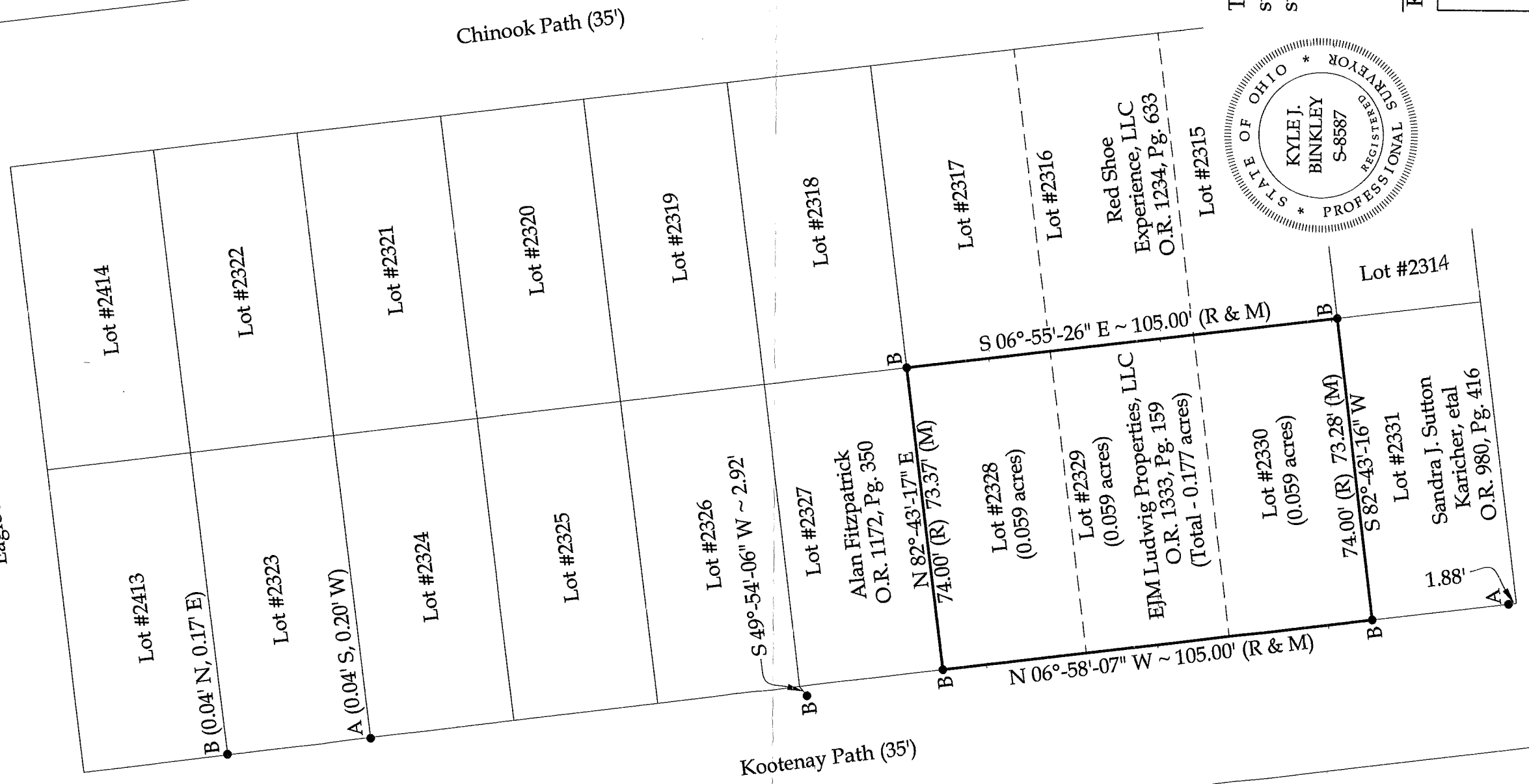


APPROVED

Survey of Parcel #43-005-13-03-003-001 and being Lots #2328, 2329 and 2330 of Chippewa Park No. 3 (P.C. A, Slide 235) in V.M.S. #12276, Stokes Township, Logan County, Ohio.
(Deed Referenced in O.R. 1343, Pg. 159)

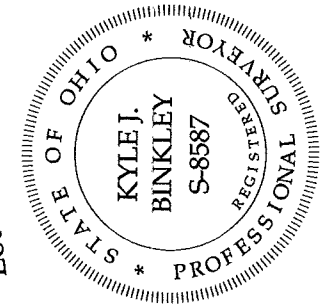


Eagle Path (35')



Legend

- A = Existing 1/2" Iron Pipe
- B = Existing #5 Rebar
- C = Set #5 Rebar



This plat represents an actual boundary survey completed under my direct supervision on August 30, 2019.

Kyle J. Binkley, P.S. #8587



CLIENT: Eric Ludwig	
SURVEYED BY: T.J.S./T.E.W.	CHECKED BY: K.J.B.
DATE: 08-30-2019	DRAWN BY: K.J.B.
SCALE: 1" = 30'	PAGE OF PAGES: 1 OF 1

NOTE: All distances on this plat are measured unless otherwise noted.

BASIS OF BEARINGS: The system of bearings for this plat and legal description is based on the Ohio State Plane - North Coordinate System NAD83 (2011).

INDEXED ON MAP
9102