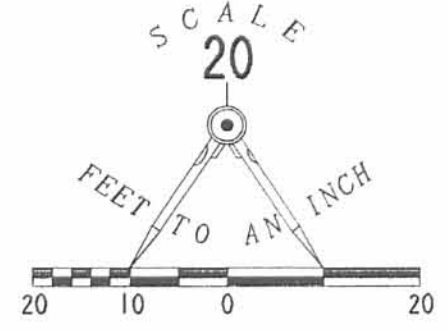


REC'D 8-12-97 SWY



- LEGEND
- 5/8 IRON ROD SET
 - 1" IRON PIPE FOUND
 - 3/4 IRON PIPE FOUND

RETRACEMENT SURVEY OF THE
 VICTOR MCFADDEN AND DOLORES MCFADDEN
 LOTS 1017 AND 1018
 CHIPPEWA PARK NO. 1
 PLAT CABINET A. SLIDE 221
 OFFICIAL RECORD 254. PAGE 374
 STOKES TOWNSHIP
 LOGAN COUNTY, OHIO



SURVEYED BY:
Jeffrey I. Lee
 JEFFREY I. LEE
 PROFESSIONAL SURVEYOR 6359
 AUGUST 6, 1997

COPYRIGHT 1997 BY:
 LEE SURVEYING & MAPPING CO., INC.
 117 North Madriver Street
 BELLEFONTAINE, OHIO 43311
 (937) 593-7335

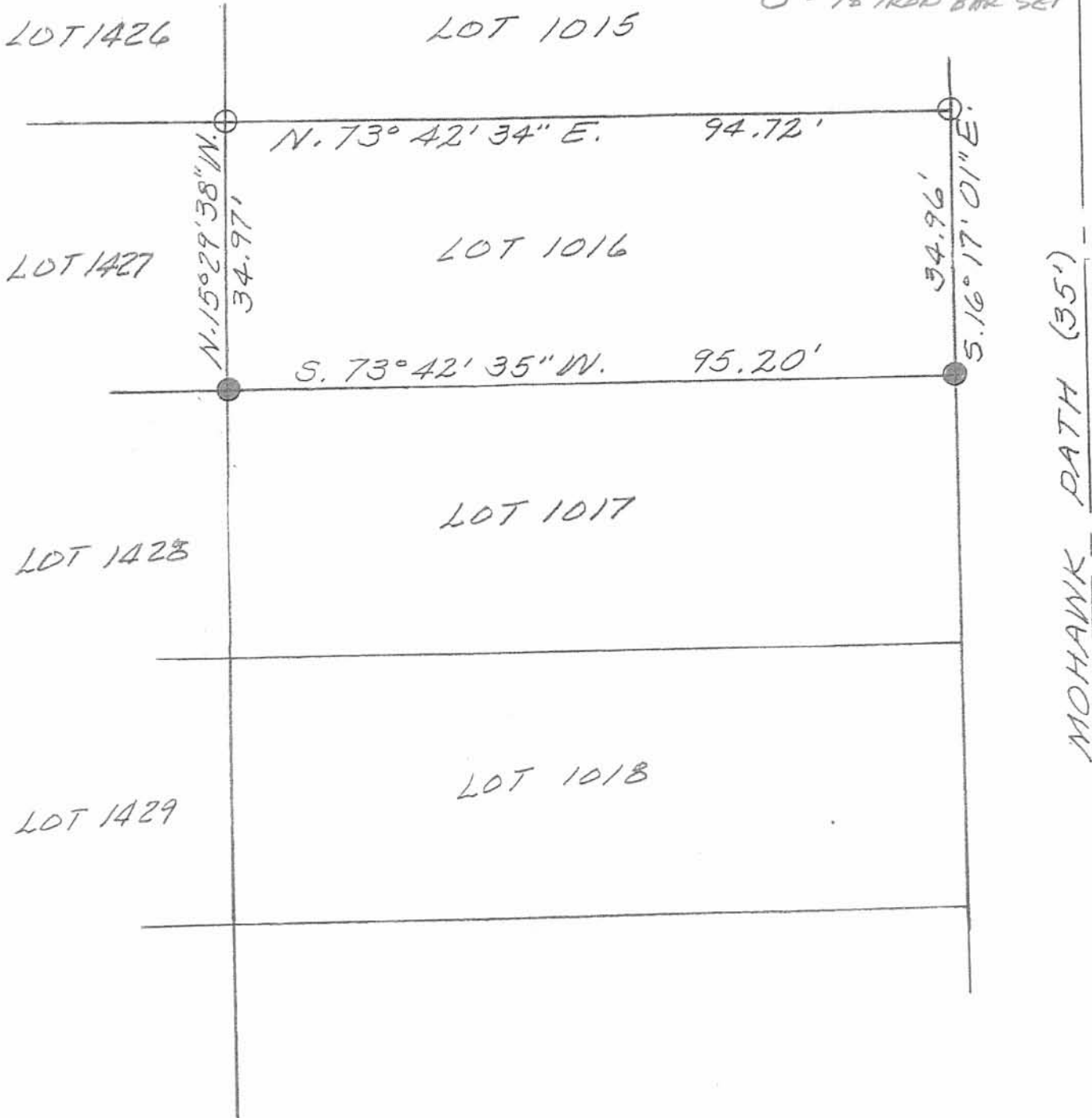
INDEXED ON MAP
 9149 IP

2 WORKING DAYS
BEFORE YOU DIG
 CALL TOLL FREE **800-362-2764**
 OHIO UTILITIES PROTECTION SERVICE

REC'D 11-3-97 SWY

LEGEND:

- = 5/8" IRON BAR FOUND
- = 5/8" IRON BAR SET



SURVEY OF LOT 1016 'N CHIPPEWA PARK NO 1 - (PLAT CABINET A - SLIDE 221) STOKES TOWNSHIP, LOGAN COUNTY, OHIO FOR DAVE HAYER.

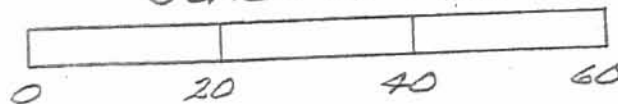
OCTOBER 30, 1997
SCALE: 1" = 20'



Leslie H. Geeslin
LESLIE H. GEESLIN

2P

IN REPLY ON MAP
9149



EAGLE PATH (35')

N 73°44'48" E 196.97'

LOT 1000

LOT 1411

CHIPPEWA PARK NO. 3
PLAT CABINET A, SLIDE 235

CHIPPEWA PARK NO. 1
PLAT CABINET A, SLIDE 221

MOHAWK PATH (35')

(BASIS FOR BEARINGS)
S 16°17'01" E 874.03'

CHICKASAW PATH (35')

N 15°31'12" W 874.29'

LOT 1430

LOT 1019

LOT 1431

LOT 1020

6' HIGH PRIVACY
FENCE ENCROACHES

1.5'

1.8'

S 73°42'14" W

97.13'

LOT 1021

LOT 1432

LOT 1022

LOT 1433

LOT 1023

LOT 1434

LOT 1024

S 73°41'45" W 208.62'

BLUE JACKET PATH (35')

SCALE
50

FEET TO AN INCH

50 25 0 50

LEGEND:

- ⊗ RAILROAD SPIKE FOUND
- ⊙ 1 INCH IRON PIPE FOUND
- ⊕ 3/4 INCH IRON PIPE FOUND
- 5/8 INCH IRON ROD SET

RETRACEMENT SURVEY OF
 THE SOUTH LINE OF THE
 LOWELL E. CULP AND
 DEBRA L. CULP
 LOT NO. 1020
 CHIPPEWA PARK NO. 1
 PLAT CABINET A, SLIDE 221
 OFFICIAL RECORD 837, PAGE 13
 STOKES TOWNSHIP
 LOGAN COUNTY, OHIO

SURVEYED BY:



ORIGINAL STAMP IN GREEN

William K. Bruce
 WILLIAM K. BRUCE
 PROFESSIONAL SURVEYOR 7437
 MAY 27, 2009

COPYRIGHT 2009 BY:

LEE SURVEYING & MAPPING CO., INC.
 117 North Madriver Street
 BELLEFONTAINE, OHIO 43311
 (937) 593-7335
 surveys@lsminc.us

KSS D0509 4797059 L-4797-3

2 WORKING DAYS
BEFORE YOU DIG
 CALL TOLL FREE **800-362-2764**
 OHIO UTILITIES PROTECTION SERVICE.

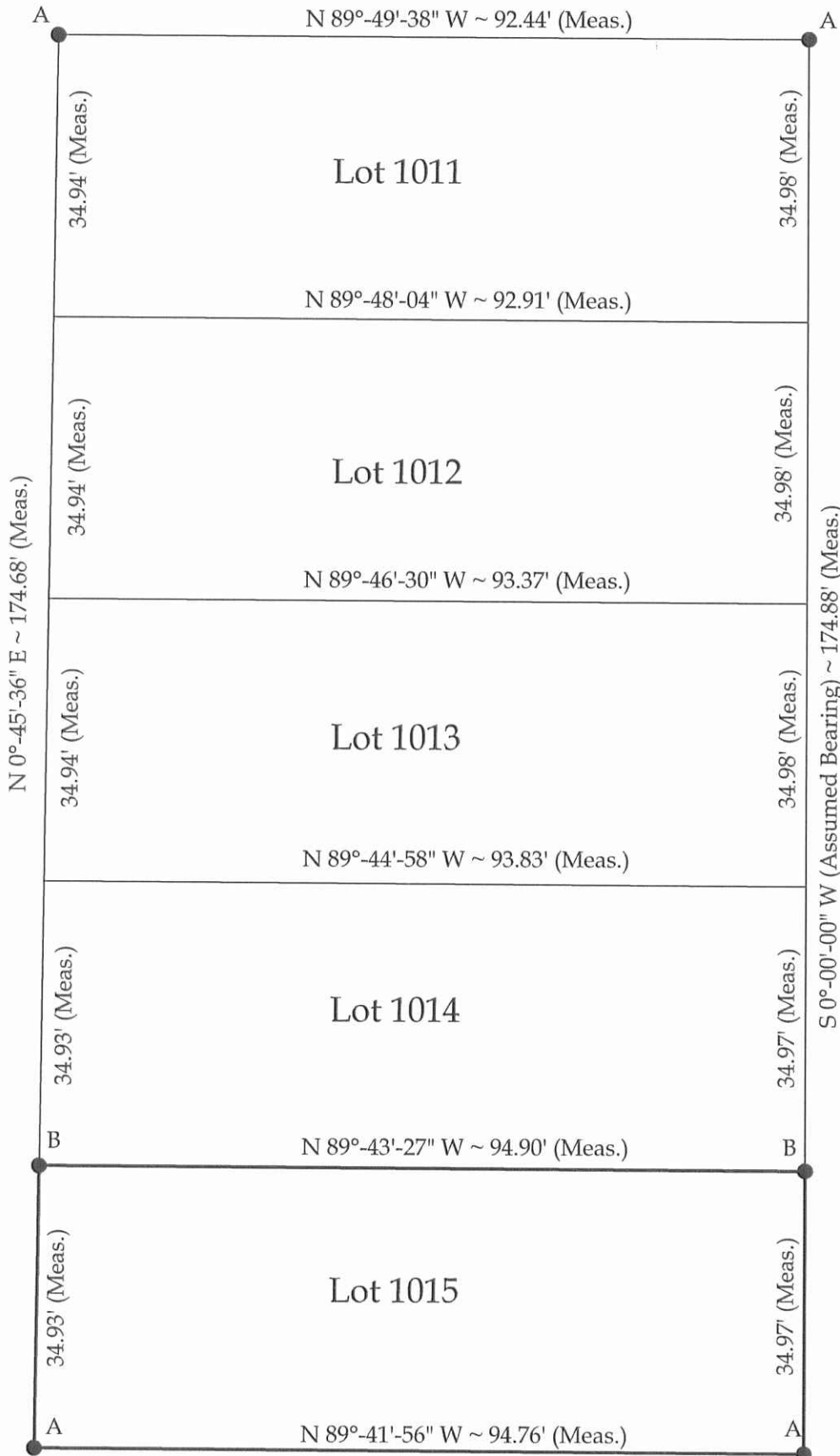
INDEXED ON MAP
 9149 3P

Survey of Lot #1015 in Chippewa Park Allotment No. 1, located in the Virginia Military District, Stokes Township, Logan County Ohio

Prior Deed referenced in O.R. 993, Page 977



SCALE: 1" = 20'



GRAPHIC SCALE

Legend

- A = Existing #5 Rebar
- B = Set #5 Rebar

Mohawk Path



This plat and the accompanying legal descriptions represent an actual boundary survey completed under my direct supervision on June 5, 2012.

Brad J. Core
 Brad J. Core, P.S. #8004

CORE CONSULTING A DIVISION OF MATERIALS TESTING, INC. 1660 S. DEFIANCE TRAIL SPENCERVILLE, OHIO 45887 (419) 647-6163			
CLIENT:		Dale Carder	
SURVEYED BY:	DATE:	DRAWN BY:	CHECKED BY:
K.J.B.	6-5-1012	J.R.C.	B.J.C.
SCALE:		PAGE OF PAGES	
1" = 20'		1 1	

INDEXED ON MAP
 9149 4P