

Lee Surveying and Mapping Co., Inc.

Land Surveys • Topography • Subdivisions • Construction Layout

117 N. Madriver St.
Bellefontaine OH 43311



Phone: (937) 593-7335
Fax: (937) 593-7444

WILLIAMS 2.112 ACRES

Lying in Section 15 and Section 16, Town 6, Range 8, Stokes Township, Logan County, Ohio.

Being out of the Paul H. Williams and Averil Williams 24.20 acre tract as deeded and described in Volume 401, Page 31 of the Logan County Records of Deeds and being more particularly described as follows:

Beginning at a MAG found at the intersection of the center-lines of U.S. Route 33 and Township Road 92.

THENCE, with the center-line of U.S. Route 33 (60 feet wide), S 19°-30'-00" E, a distance of 982.90 feet to a MAG nail set at the TRUE POINT OF BEGINNING.

THENCE, with center-line of U.S. Route 33, S 19°-30'-00" E, a distance of 428.07 feet to a MAG nail set.

THENCE, with the south lines of the NW 1/4 of Section 15 and the NE 1/4 of Section 16 and the north lines of the Marvin G. Seeley original 57.359 acre tract (O.R. 430, Pg. 321, Tract IV, Parcel One) and the Marvin G. Seeley original 31.463 acre tract (O.R. 430, Pg. 321, Tract IV, Parcel Two), N 89°-22'-25" W, a distance of 263.49 feet to a 5/8 inch iron rod set, passing a 3 inch steel post found at 31.95 feet.

THENCE, N 9°-29'-34" W, a distance of 104.32 feet to a 5/8 inch iron rod set.

THENCE, N 45°-44'-50" W, a distance of 99.18 feet to a 5/8 inch iron rod set.

THENCE, N 12°-00'-41" W, a distance of 125.66 feet to a 5/8 inch iron rod set.

THENCE, N 70°-33'-32" E, a distance of 163.72 feet to a 5/8 inch iron rod set on the east line of Section 16.

THENCE, N 57°-36'-12" E, a distance of 95.44 feet to the point of beginning, passing a 5/8 inch iron rod set at 64.66 feet.

Containing 2.112 acres, of which 1.350 acres are in Section 15, 0.762 acre is in Section 16 and 0.289 acre is within the highway right-of-way.

The basis for bearings is the center-line of U.S. Route 33, being S 19°-30'-00" E, and all other bearings are from angles and distances measured in a field survey by Lee Surveying and Mapping Co., Inc. on August 23, 2001.

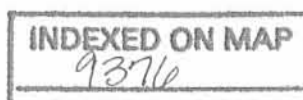
Description prepared by:



ORIGINAL STAMP IN GREEN

[Signature]
Jeffrey I. Lee
Professional Surveyor 6359
August 28, 2001

L-3217



1D

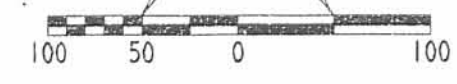
REV'D 8-30-01 SWM OK

TOWNSHIP ROAD 92

33

SCALE
100

F E E T
T O
A N
I N C H

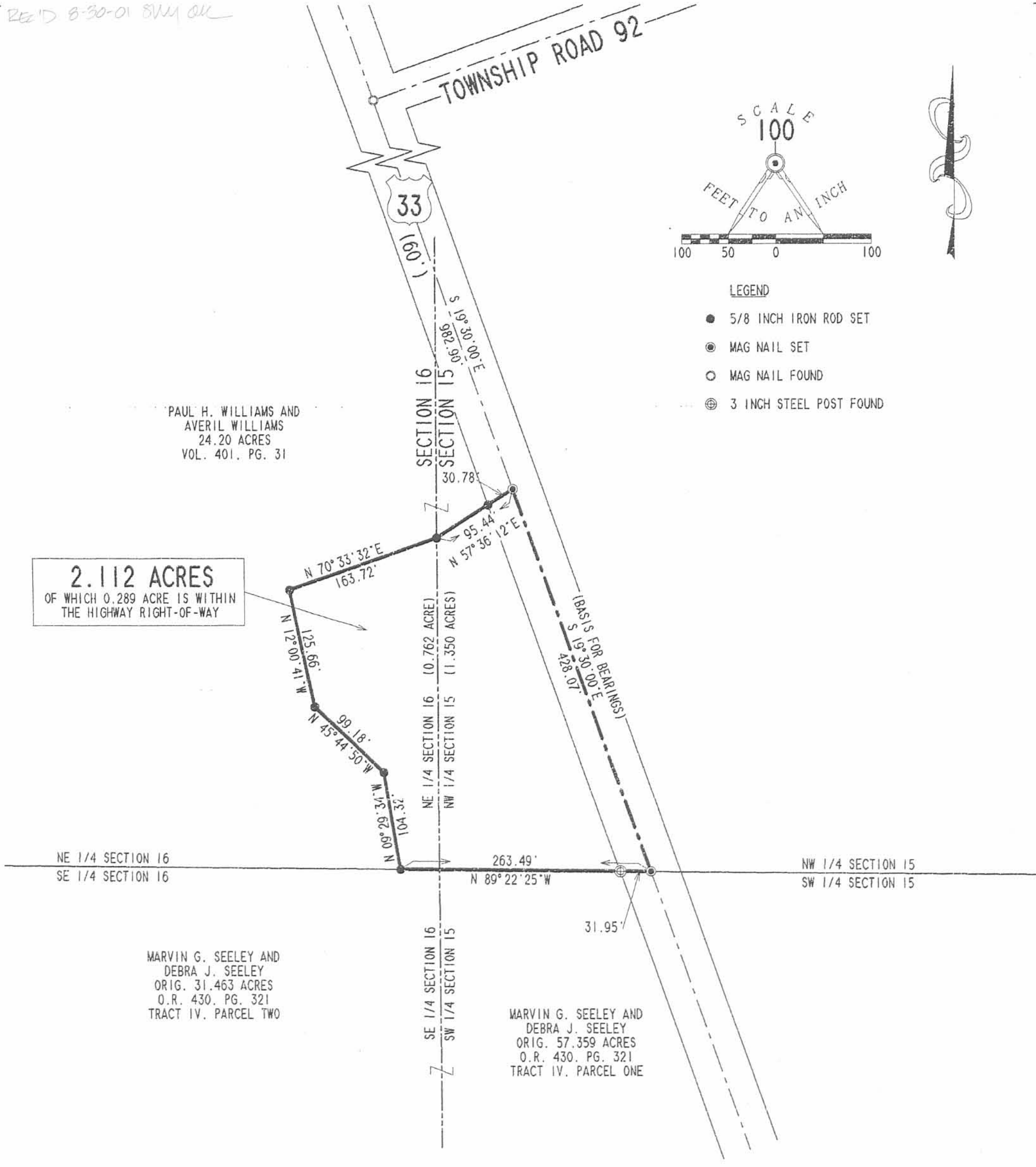


LEGEND

- 5/8 INCH IRON ROD SET
- ⊙ MAG NAIL SET
- MAG NAIL FOUND
- ⊕ 3 INCH STEEL POST FOUND

PAUL H. WILLIAMS AND
AVERIL WILLIAMS
24.20 ACRES
VOL. 401, PG. 31

2.112 ACRES
OF WHICH 0.289 ACRE IS WITHIN
THE HIGHWAY RIGHT-OF-WAY



MARVIN G. SEELEY AND
DEBRA J. SEELEY
ORIG. 31.463 ACRES
O.R. 430, PG. 321
TRACT IV, PARCEL TWO

MARVIN G. SEELEY AND
DEBRA J. SEELEY
ORIG. 57.359 ACRES
O.R. 430, PG. 321
TRACT IV, PARCEL ONE

SURVEY OF 2.112 ACRES OUT OF THE
PAUL H. WILLIAMS AND AVERIL WILLIAMS
ORIGINAL 24.20 ACRE TRACT
VOLUME 401, PAGE 31
SECTIONS 15 AND 16, TOWN 6, RANGE 8
STOKES TOWNSHIP
LOGAN COUNTY, OHIO



SURVEYED BY:

JEFFREY I. LEE
PROFESSIONAL SURVEYOR 6359
AUGUST 23, 2001

COPYRIGHT 2001 BY:
LEE SURVEYING & MAPPING CO., INC.
117 North Madriver Street
BELLEFONTAINE, OHIO 43311
(937) 593-7335
D 402 WILLIAMS L-3217-3

2 WORKING DAYS
BEFORE YOU DIG
CALL TOLL FREE **800-362-2764**
OHIO UTILITIES PROTECTION SERVICE.

INDEXED ON MAP
9376

IP ORIGINAL STAMP IN GREEN