

REC'D 8-17-06 SJM/OK

Lee Surveying and Mapping Co., Inc.

Land Surveys • Topography • Subdivisions • Construction Layout

117 N. Madriver St.
Bellefontaine OH 43311



Phone: (937) 593-7335
Fax: (937) 593-7444

1975 - 2005 - 30 YEARS OF EXCELLENCE SHOFFSTALL 1.000 ACRES

Lying in Section 30, Town 6, Range 8 East, Stokes Township, Logan County, Ohio.

Being out of the Kenneth E. Shoffstall original 103.423 acre tract as deeded and described in Official Record 786, Page 347 of the Logan County Records of deeds and being more particularly described as follows:

Commencing at a Logan County Engineer's 3/4 inch iron rod found inside a monument box at the intersection of center-lines of Ohio Route 720 (60 feet wide) and Township Road 86.

THENCE, with the center-line of Ohio Route 720, N 88°-59'-00"W, a distance of 990.72 feet to a MAG nail set at THE TRUE POINT OF BEGINNING.

THENCE, with the center-line of Ohio Route 720, N 88°-59'-00"W, a distance of 270.56 feet to a MAG nail set.

THENCE, N 1°-01'-00"E, a distance of 161.00 feet to a 5/8 inch iron rod set, passing a 5/8 inch iron rod set at 30.00 feet.

THENCE, S 88°-59'-00"E, a distance of 270.56 feet to a 5/8 inch iron rod set.

THENCE, S 1°-01'-00"W, a distance of 161.00 feet to the point of beginning, passing a 5/8 inch iron rod set at 131.00 feet.

Containing 1.000 acre of which 0.183 acre is within the highway right-of-way.

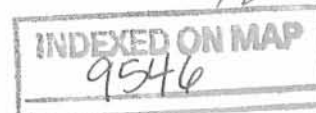
The basis for bearings is the center-line of Ohio Route 720 being N 88°-59'-00"W and all other bearings are from angles and distances measured in a field survey by Lee Surveying and Mapping Co., Inc. on August 11, 2006.



ORIGINAL STAMP IN GREEN

Description prepared by:

Jeffrey L. Lee
Jeffrey L. Lee
Professional Surveyor 6359
August 15, 2006



L-4293086

REV'D 8-17-06 SJM/OK

Lee Surveying and Mapping Co., Inc.

Land Surveys • Topography • Subdivisions • Construction Layout

117 N. Madriver St.
Bellefontaine OH 43311



Phone: (937) 593-7335
Fax: (937) 593-7444

1975 - 2005 - 30 YEARS OF EXCELLENCE SHOFFSTALL 5 FEET WIDE ELECTRICAL EASEMENT

Lying in Section 30, Town 6, Range 8 East, Stokes Township, Logan County, Ohio.

Being a 5.0 feet wide electrical easement through the Kenneth E. Shoffstall original 103.423 acre tract as deeded and described in Official Record 786, Page 347 of the Logan County Records of deeds and being more particularly described as follows:

Commencing at a Logan County Engineer's 3/4 inch iron rod found inside a monument box at the intersection of center-lines of Ohio Route 720 (60 feet wide) and Township Road 86.

THENCE, with the center-line of Ohio Route 720, N 88°-59'-00"W, a distance of 1166.17 feet to a point, passing a MAG nail set at 990.72 feet.

THENCE, N 1°-01'-00"E, a distance of 28.35 feet to a point at the TRUE POINT OF BEGINNING.

THENCE, with the center-line of the aforesaid 5.0 feet wide easement, N 7°-49'-49"E, a distance of 133.59 feet to a point on the north line of a new 1.000 acre tract and the terminus of this easement.

The basis for bearings is the center-line of Ohio Route 720 being N 88°-59'-00"W and all other bearings are from angles and distances measured in a field survey by Lee Surveying and Mapping Co., Inc. on August 11, 2006.

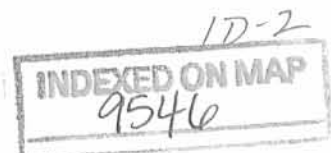
Description prepared by:

Jeffrey I. Lee
Professional Surveyor 6359
August 15, 2006

L-4293086



ORIGINAL STAMP IN GREEN



REC'D 8-17-06 SJM OK

Lee Surveying and Mapping Co., Inc.

Land Surveys • Topography • Subdivisions • Construction Layout

117 N. Madriver St.
Bellefontaine OH 43311



Phone: (937) 593-7335
Fax: (937) 593-7444

1975 - 2005 - 30 YEARS OF EXCELLENCE

SHOFFSTALL

6 FEET WIDE WATER AND SEWER EASEMENT

Lying in Section 30, Town 6, Range 8 East, Stokes Township, Logan County, Ohio.

Being a 6.0 feet wide water and sewer easement through the Kenneth E. Shoffstall original 103.423 acre tract as deeded and described in Official Record 786, Page 347 of the Logan County Records of deeds and being more particularly described as follows:

Commencing at a Logan County Engineer's 3/4 inch iron rod found inside a monument box at the intersection of center-lines of Ohio Route 720 (60 feet wide) and Township Road 86.

THENCE, with the center-line of Ohio Route 720, N 88°-59'-00"W, a distance of 990.72 feet to a MAG nail set.

THENCE, N 1°-01'-00"E, a distance of 117.10 feet to a point at the TRUE POINT OF BEGINNING, passing a 5/8 inch iron rod set at 30.00 feet.

THENCE, with the center-line of the aforesaid 6.0 feet wide easement, N 84°-24'-42"W, a distance of 46.00 feet to a point at the terminus of this easement.

The basis for bearings is the center-line of Ohio Route 720 being N 88°-59'-00"W and all other bearings are from angles and distances measured in a field survey by Lee Surveying and Mapping Co., Inc. on August 11, 2006.

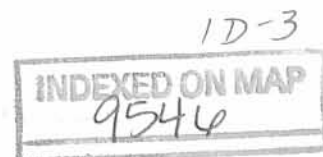
Description prepared by:

Jeffrey I. Lee
Professional Surveyor 6359
August 15, 2006

L-4293086

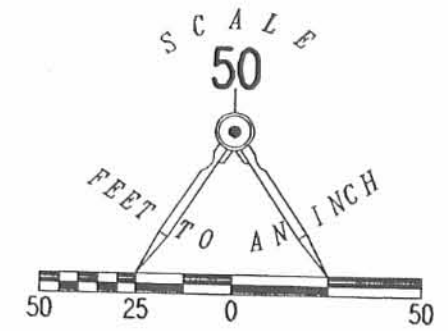


ORIGINAL STAMP IN GREEN






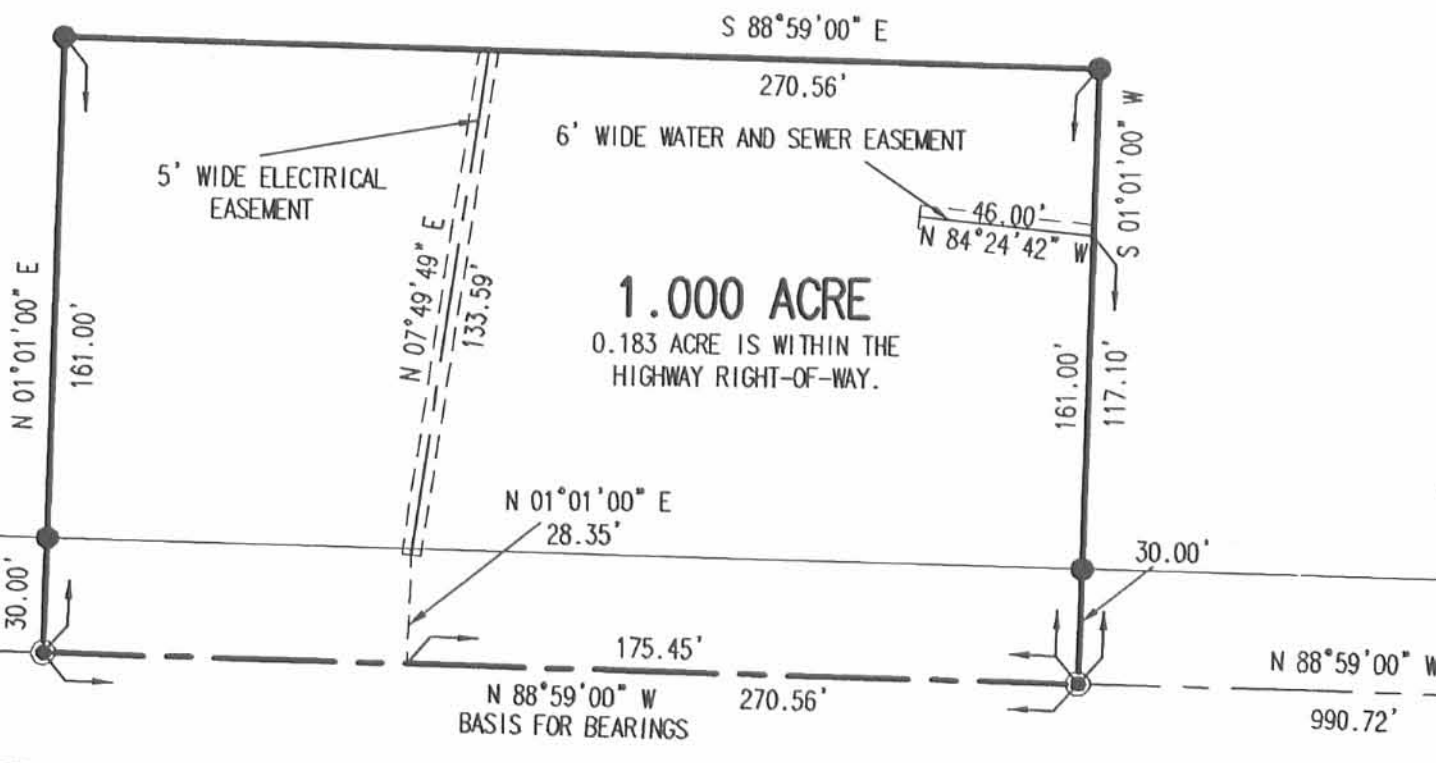
REV'D 8-17-06 SWM Ok

KENNETH E. SHOFFSTALL
ORIGINAL 103.423 ACRE TRACT
O.R. 786, PG. 347



LEGEND

-  3/4 INCH LOGAN COUNTY ENGINEER'S IRON ROD FOUND INSIDE MONUMENT BOX.
-  5/8 INCH IRON ROD SET
-  MAG NAIL SET



TOWNSHIP ROAD 86


720
(60')

A SURVEY OF A 1.000 ACRE TRACT OUT OF THE
 KENNETH E. SHOFFSTALL
 ORIGINAL 103.423 ACRE TRACT
 OFFICIAL RECORD 786, PAGE 347
 SECTION 30, TOWN 6, RANGE 8 EAST
 STOKES TOWNSHIP
 LOGAN COUNTY, OHIO



ORIGINAL STAMP IN GREEN

SURVEYED BY:


 JEFFREY I. LEE
 PROFESSIONAL SURVEYOR 6359
 AUGUST 11, 2006

COPYRIGHT 2006 BY:
LEE SURVEYING & MAPPING CO., INC.
 117 North Madriver Street
 BELLEFONTAINE, OHIO 43311
 (937) 593-7335

ADW D0806 4293086 L-4293086-3

2 WORKING DAYS
BEFORE YOU DIG
 CALL TOLL FREE **800-362-2764**
 OHIO UTILITIES PROTECTION SERVICE.

INDEXED ON MAP
 9546

1P