

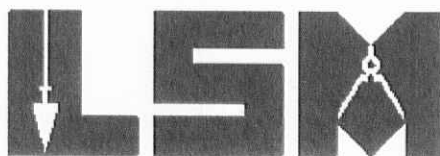
12-23-16

Lee Surveying and Mapping Co., Inc.



Land Surveys • Topography • Subdivisions • Construction Layout

117 N. Madriver St.
Bellefontaine OH 43311



Phone: (937) 593-7335
Fax: (937) 593-7444
surveys@lsminc.us

SMITH 4.649 ACRES

Lying in Section 32, Town 6, Range 8, Stokes Township, Logan County, Ohio.

Being out of the Bruce Smith and Connie Smith 94.01 acre tract as deeded and described in Official Record 859, Page 499, Tract No. 1 of the Logan County Records of Deeds and being more particularly described as follows:

Commencing on a 3/4 inch iron bolt found on the southwest corner of the southeast quarter of Section 32, on the center-line of County Highway 52.

THENCE, with the south line of the southeast quarter of Section 32 and the center-line of County Highway 52 (40 feet wide), S 86°-08'-54"E, a distance of 1319.77 feet to a railroad spike found at the TRUE POINT OF BEGINNING, passing a harrow tooth found on the intersection of the center-line of County Highway 53 at 41.50 feet.

THENCE, with the east line of the New Generation Acres, LLC, 10 acre tract (O.R. 868, Pg. 235, Parcel 2), N 03°-33'-01"E, a distance of 450.00 feet to a 5/8 inch iron rod set, passing a 5/8 inch iron rod set at 20.00 feet.

THENCE, S 86°-08'-54"E, a distance of 450.00 feet to a 5/8 inch iron rod set.

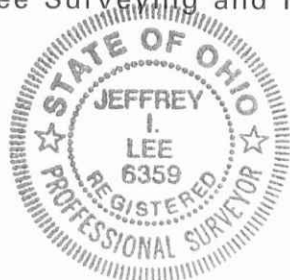
THENCE, S 03°-33'-01"W, a distance of 450.00 feet to a MAG nail set on the south line of the southeast quarter of Section 32 and the center-line of County Highway 52, passing a 5/8 inch iron rod set at 430.00 feet.

THENCE, with the south line of the southeast quarter of Section 32 and the center-line of County Highway 52, N 86°-08'-54"W, a distance of 450.00 feet to the point of beginning.

Containing 4.649 acres, of which 0.207 acre is within the highway right-of-way.

Property is subject to any and all previous easements and rights-of-way of record.

The basis for bearings is the south line of the southeast quarter of Section 32 and the center-line of County Highway 52, being S 86°-08'-54"E, and all other bearings are from angles and distances measured in a field survey by Lee Surveying and Mapping Co., Inc. on November 28, 2016.

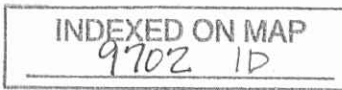


Description prepared by:

[Signature]
Jeffrey I. Lee
Professional Surveyor 6359
December 2, 2016

ORIGINAL STAMP IN GREEN

61941116

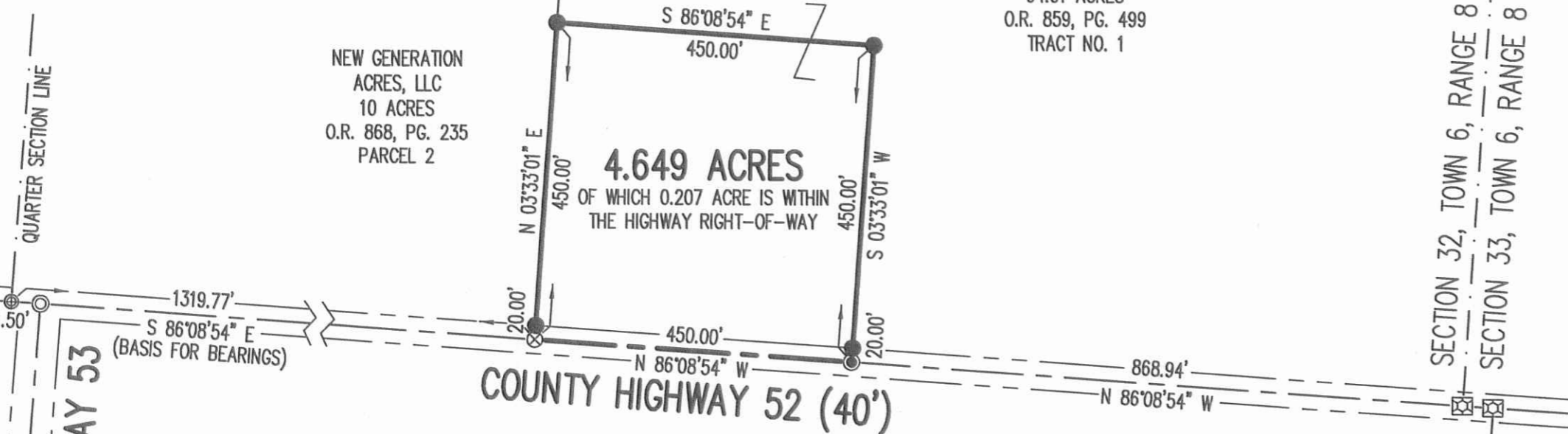


12-23-16

APPROVED

LEGEND:

- ⊙ 3/4 INCH IRON BOLT FOUND
- ⊠ STONE FOUND
- ⊙ HARROW TOOTH FOUND
- ⊠ 5/8 INCH IRON ROD FOUND ON MONUMENT BOX
- ⊗ RAILROAD SPIKE FOUND
- ⊙ MAG NAIL SET
- 5/8 INCH IRON ROD SET WITH PLASTIC I.D. CAP STAMPED "LSM"

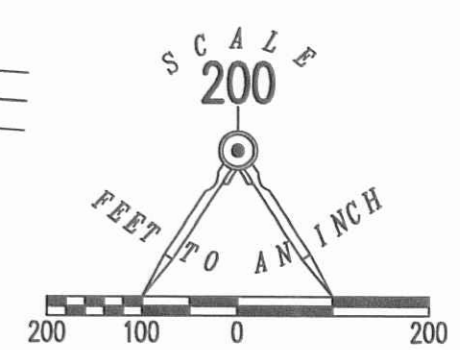


BRUCE SMITH AND
CONNIE SMITH
94.01 ACRES
O.R. 859, PG. 499
TRACT NO. 1

NEW GENERATION
ACRES, LLC
10 ACRES
O.R. 868, PG. 235
PARCEL 2

4.649 ACRES
OF WHICH 0.207 ACRE IS WITHIN
THE HIGHWAY RIGHT-OF-WAY

720



**SURVEY OF 4.649 ACRES OUT OF THE
BRUCE SMITH AND
CONNIE SMITH
94.01 ACRE TRACT
OFFICIAL RECORD 859, PAGE 499
TRACT NO. 1
SECTION 32, TOWN 6, RANGE 8
STOKES TOWNSHIP
LOGAN COUNTY, OHIO**

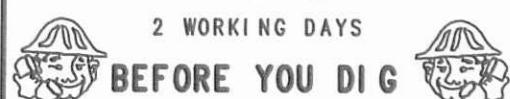
SURVEYED BY:

JEFFREY I. LEE
PROFESSIONAL SURVEYOR 6359
NOVEMBER 28, 2016



COPYRIGHT 2016 BY:
LEE SURVEYING & MAPPING CO., INC.
117 North Madriver Street
BELLEFONTAINE, OHIO 43311
(937) 593-7335
WWW.LSMINC.US
surveys@lsminc.us

THIS SURVEY WAS PREPARED IN THE ABSENCE OF
A COMPLETE AND ACCURATE TITLE SEARCH AND
DOES NOT GUARANTEE TITLE.



CALL TOLL FREE **800-362-2764**

OHIO UTILITIES PROTECTION SERVICE

ORIGINAL STAMP IN GREEN KSS D1116 61941116 L-6194-3

INDEXED ON MAP
9702 IP