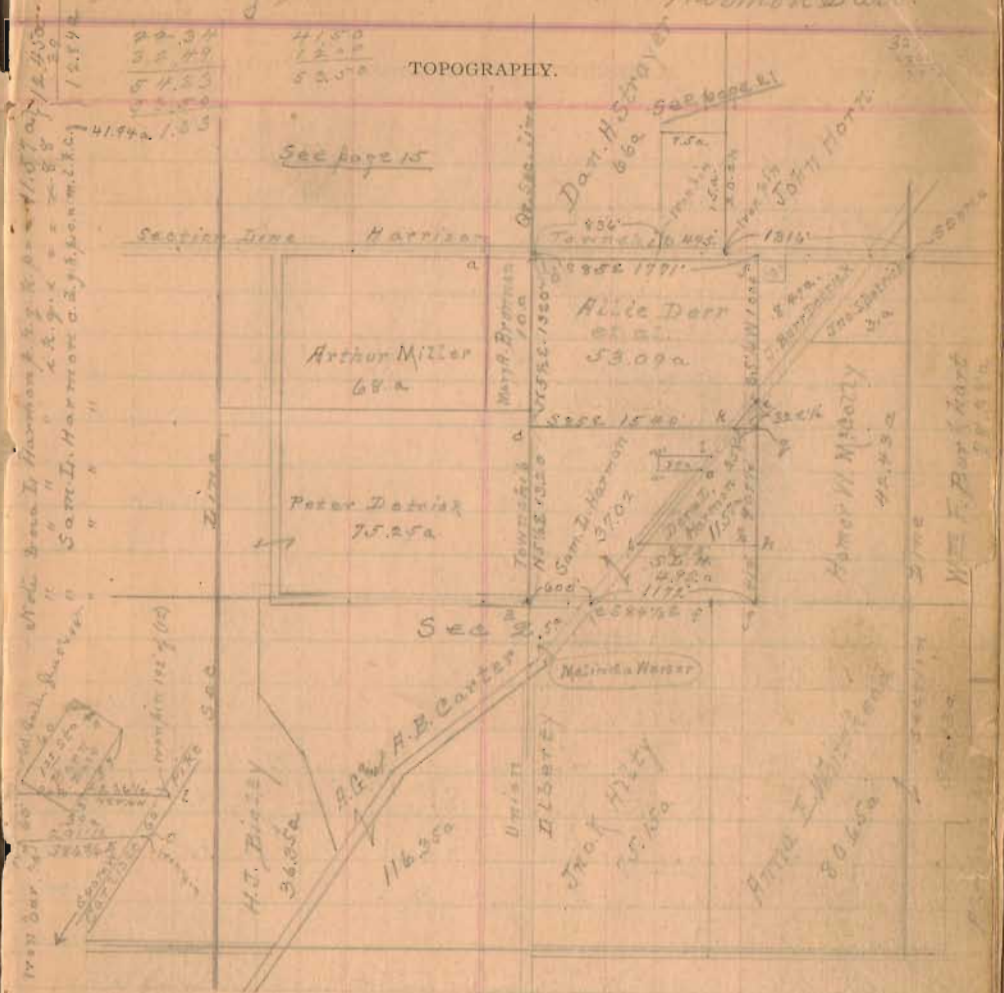


Harmon Survey March 23rd 1915. A fine day
 G.M. Meddleton } chain course
 Looking }
 R. E. Studley & Co., Manufactur

STATION. ALIGNMENT. DEFLECTION. REMARKS.

- Sliver Harmon land S 44 3/4 E from 692
- (1) Start 25 E of d₁ S 91 1/2 Harmon land. Ranclose line
 Thence N 5 1/2 E with Mr. line Harmon land
 at 134 6/12. 1 post in sliver 10 a.
 " " set stake in ranclose line.
 " Spike on road at T in ranclose line
 " 2636 S 91 1/2 Allie Bern land, in public road from
 " 2640 set T in div line N 77 1/2 Allie Bern 1/4 sec. Corner to
 " 1320 down old boiler line S 27 1/2 = 2 C at 25 W of Rand line at one post
 (2) Start at stake = 2640 of (1) thence with boundary
 S 85 1/4 E with public road 40' to line Sec 2
 at 1336 pass S 91 1/2 15 a in line of iron fence N.
 " 1332 " 52 1/2 " iron pin in fence road
 " 1771. iron pin fence 6 = S 7 W 1/2 school lot at T or stake
 set T in line
 (3) Start at 25 E of T. 1771 of (2) S 5 1/4 W from S of T to
 at 1004 set bolt 7 1/2 10" in east track to side fence = 1/2 W. 20
 " 1320 set T for dist. at 1326 1/2 set T middle line of W sec
 " 2653 corner post on fence S. W. 9 1/2
 " fall 33' E of corner post dep. 8 to east
 stake Spring top S 5 1/4 N. 1004. 2 post 2 tag with iron fence 1649
 (4) Start 25 E of iron pin 2653 of (3). S 84 1/2 W = S 84 1/4 W.
 at 1178 corner pin on line Harmon survey = 2
 " 1778 fall 20 1/2 S 2 1/2 = dip S = 4 1/2 = 2
 (5) Start at iron pin line 1320 of (3) thence on div line S to
 S 84 1/2 E on line stake at 500 set iron pin on line at 2087
 at 1540 set iron pin 5 1/2 10" in road fence. fence S R
 1778 fence E end Harmon at 1326 1/2 S of T - Meddleton G M

Section 2. Town 3. Range 14.
 Liberty & Union Townships Harmon Survey



- (12) April 29 - 6 dead at iron pin line side = 402 1/2 (16) Thence on line of
 fence R 1/2 S 40 1/2 W 192 set iron pin in 30 feet from line S of C to R. 300
- (13) Start at 192 of (12). S 84 1/2 W on N line 200 a Harmon. 300
 at 236 1/2 set stake on side from S of S 1/2 E of 80 a. At 329 set T N 7 1/2 W 1/2 300
- (14) Start at 329 of (13) S 5 1/2 W. at 60' set T S 7 1/2 E. 300
- (15) " Start at pin 182 of (13). S 40 1/2 W with fence at 60' set iron pin S E 1/2 300
- (16) Start at T at 60' of (15) S 5 1/4 E on S line. 390. at 20 1/2 iron pin in fence
 at 60 of (15) See page 48 notes
 " " 79 plat