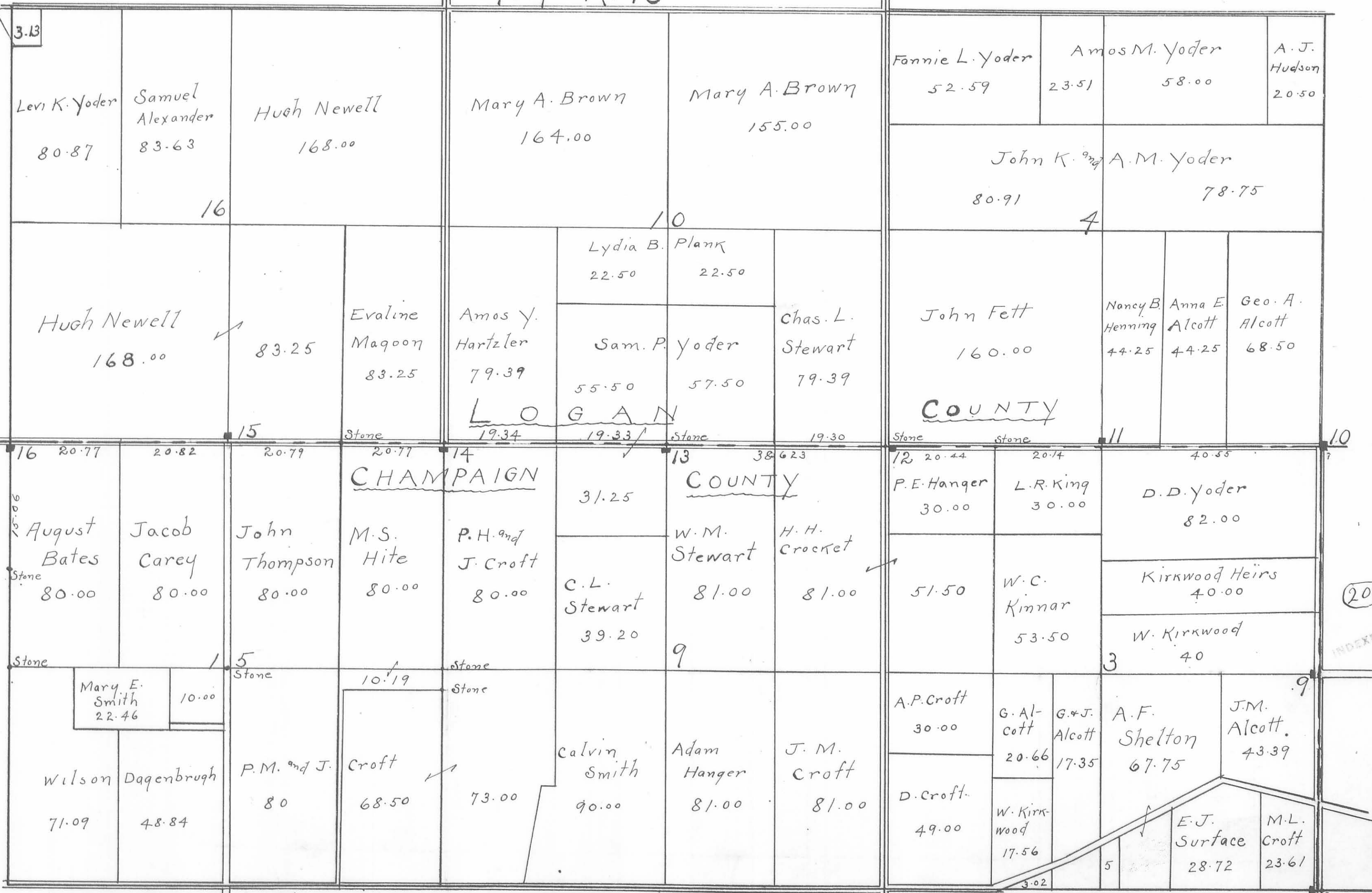


207

208

T. 4. R. 13



MONUMENTS:

- No. 8 — Stone — 17 feet West of Cor. Harrison and Salem Tps.
- No. 9 — Stone — 17 feet West of Qr. Sec. Cor.
- No. 10 — Stone — ~~On line and Sec. Cor. 4 feet North of Sec. Corner~~ Stone Broken 5 ft from top. See Book # 479 Page 9
- No. 11 — Stone — 20 feet north of Qr. Cor.
- No. 12 — Stone — 20 feet south and 20 feet East of Sec. Cor. Stone Broken at ground level, reset top at East side of Stone 10/2/67 D.L.D.
- No. 13 — Stone — 20 feet South and 2 feet E. of Qr. Sec. Corner
- No. 14 — Stone — 20 feet South of Section Corner.
- No. 15 — Stone — 20 feet North of Qr. Sec. Corner
- No. 16 — Stone — 20 feet South and 20 feet West of Sec. Corner