

Buroker survey

Union Twp. sec. 7 T. 3 R. 14

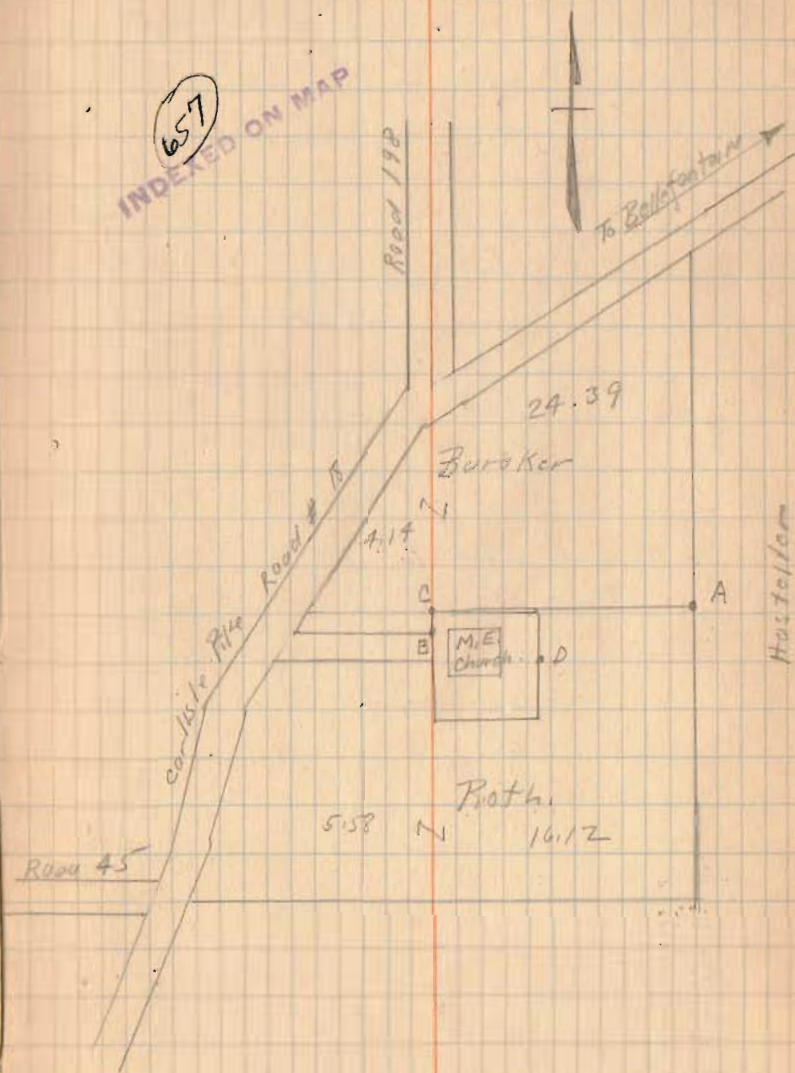
The Purpose of this survey was to establish a straight line from A to C.

- A. Stone found.
- B. " "
- C. Stake Placed.
- D. Noticed stone, did not use it.

T. O. Hill To D. R. Buroker Deed Vol. 128 Page 158
 C. Roth To J. Roth " " 129 " 421
 Hostetler " " 109 " 515

Found B. Measured 77.22' North and set
 C. This is distance in Buroker deed.

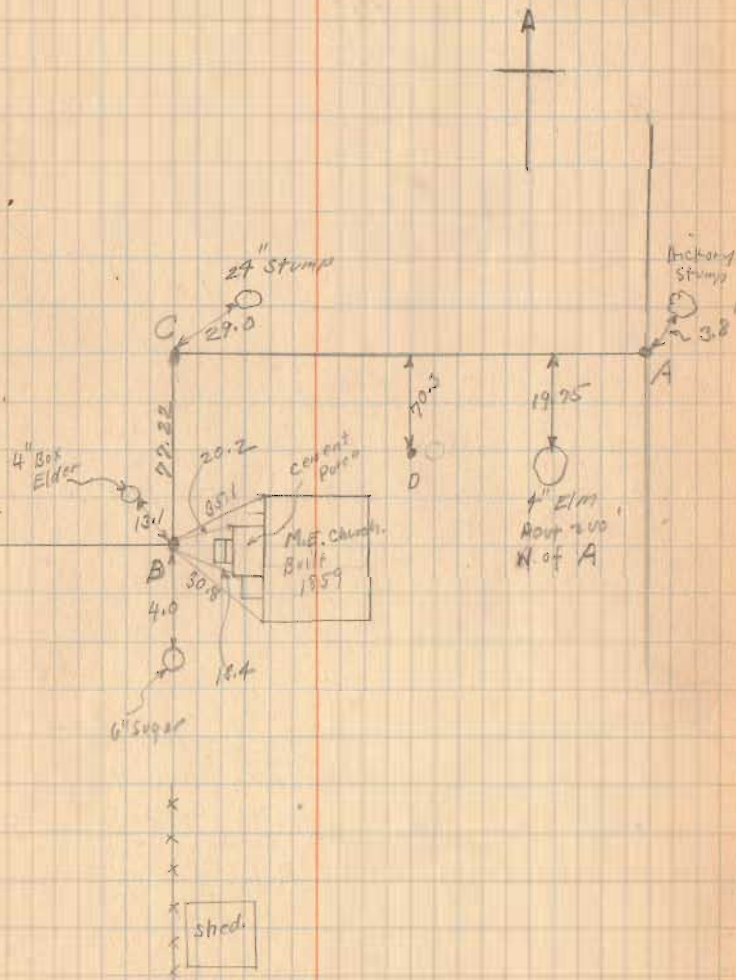
May 24 1928
 Wright
 Mr. Buroker



(Continued on Page 20)

Buroker Survey

See Page 19.



Heber McCracken
D.D. Williamson Lura
Dec. 19, 1911

Heber McCracken }
D.D. Williamson } ch. in
Samuel L. Spencott } at sta

Start stone in road at line
Williamson & Keenan just S. of
Doko Lake.

With Anchor Post in fence
line. West. In line with stone
44 1/2 lks.

Mean S. with O road

24.62 in line with wire fence
west & rail fence east.

D.D. Williamson (and Heber McCracken
with state that these fences have
been in present location for 30 or 40
yrs, & always recognized & accepted
as line.

24.62 set stone in O road being
8 1/2 S of Section

657

Set S. 4 feet
Westward along Sec. line
1993 - W. line D.D. W.
33.73 E. line of "Phonograph" Hoops
at this pt. new fence as built
by Roth is 22 lks S. of anchor
post. Only Heber McCracken (and
D.D. W. state that this anchor post
is in old fence line as stood for
30 or more years. New fence
built since 2 yrs ago in line given
by Frank Hoop.

38.50 O anchor post
38.52 O rail fence, south = NW ~~McCracken~~
38.58 telephone post
51.50 O Carlisle pits (on road west
Roth's fence. Heads toward O
of road. This road not straight

51.17 anchor post E side Carlisle
at L. Line follows a Roth

Set stakes for depth at 5, 10, 15, 20, 25,
30, 35 & 40 ch.

Random Set these stakes
in random, starting 4' S. at E end
N 84 3/4 W

at 33.73 Random cut 6 lks
N of anchor post.

Miss S, from stone at NW
 Ch. lot. for 7.03 anchor
 post = 32.73 previous page

Corrections.

Random line should run 4' S. of
 anchor post. 4' = 6 lks.

1. Random should run $6+6 = 12$ lks
 S. at 32.73

32.73 / 12, 000 (356 link per chain
 10 119

$$\begin{array}{r} 18810 \\ 16865 \\ \hline 19450 \end{array}$$

356	x 5 = (correction for 5 ch)	1.780 lks
356	x 10 = 10 ch =	3.56
356	x 15	5.34
356	x 20	7.12
356	x 25	8.90
356	x 30	10.68
356	x 32.73 (chks lks.)	12.02 lks
356	x 38.50	13.71

at 3850 corrected line = 20' 8" N. of
 N. side anchor post at NW McConahan

657

Set south at each stake as per
 corrections on opposite page,
 this gave random, 4' south
 of true line.

Then set stakes 4' north of each
 point, = true line.

Samuel B. Lippincott

Real Estate
 Mason - Ohio

Admr - McCracken Estate