

Survey for location
of NE corner
30-4-13

10-2-31
G.A. Inskip.
J.S. Crane
John M^c Kiroloq

Union Twp.

On Range Line

0 + 00

589 E (Present Magnetic)

Distances in feet and tenths

9 + 10.1

9 + 68

9 + 78.2

14 + 46.0

16 + 00

19 + 59

23 + 32.9

23 + 67

26 + 40.6

1321
INDEXED ON MAP

For evidence of proper location
of this Section Corner see

County Surveyors Record C, Page 54

Logan County Road Record 1 Page 316

Logan County Road Record 2 Page 530

October 1931

72

CA Inskip	2	3	5	6
J.S. Crane	1	1/2	1	1/2
J. M ^c Kiroloq	1	1/2	1	1/2

Found Stone in Road 45 1/2 to 30-4-13

Fence to South 5' West, Fence to N 3 1/2' W.

10" Walnut 5.6 1/2 W. 218.7'

+ on digger head 5'x6'x2' N. 79 E 28.0'

+ on digger head N. 3 1/4 W. 34.6'

Stone (flat, on edge) NE corner 5 1/2 Acre tract

10" walnut 5.12 1/2 W. 14.1'

15" walnut 5 2 E 35.7'

16" cherry 3.84 1/2 E 24.0'

15" x 14" Concrete Post 5 8 W 19.8'

10" x 10" New corner post - N. line Cemetery

Old Post hole

Stone set by F.F. Wright 2.1' N. of Range Line

Center of gravel on Road.

N. Rot W. fence

N. side 30' Elm and 9.4' S. of SW cor old frame

10.6' S of S.E. corner old frame house

Spike in bridge NE. cor 30-4-13

10-5-81

On Random line

- 0+00
- 9+10.1
- 9+68
- 9+78.2
- 10+31
- 10+79
- 10+94
- 11+26
- 12+49.5
- 14+46.0
- 23+32.9
- 23+67
- 26+40.6

of gravel
fence
of center
E of W
14+00
1928

1321
INDEXED ON MAP

Set Range line 10' 5"
of center E and W of old house
at 23+50 as called for in
survey of road AS Road Record
2 Page 530

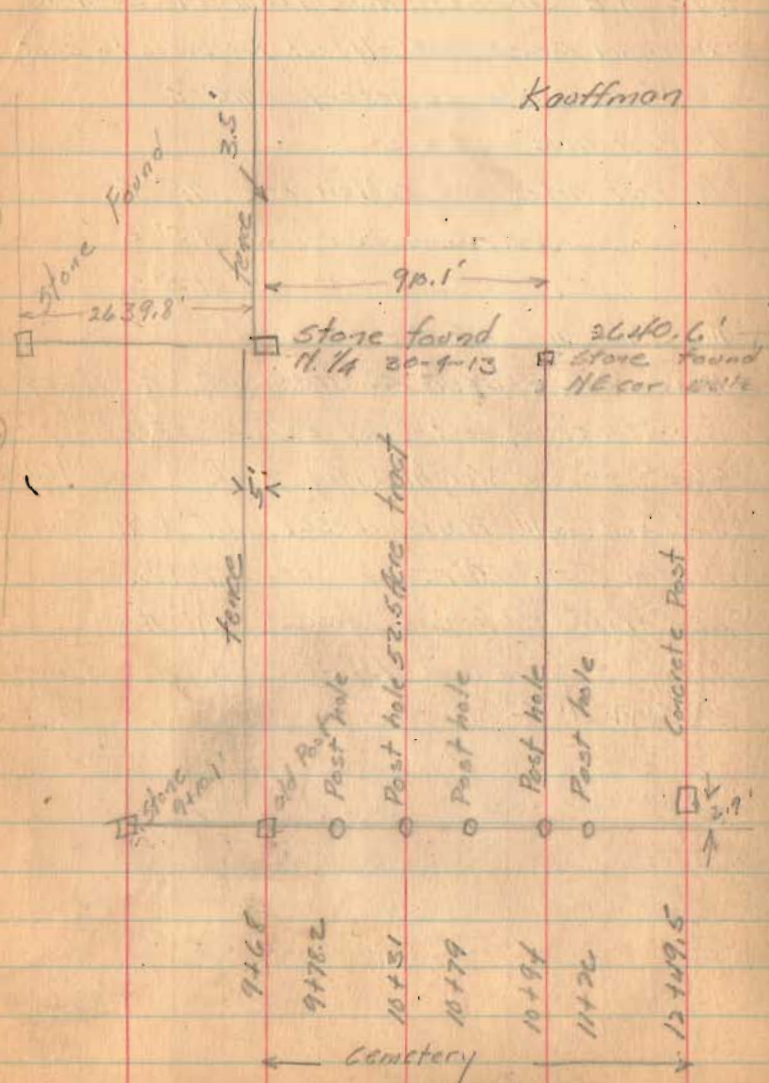
73

- Stone 1/4 30-4-13 10' 5" ^{N-S}
- Stone N.E. cor. 5 1/2 Acre tract in 30-4-13 ^{N-S}
- 10" x 10" horn corner post (old) cut for brace to east
and W. line old cemetery 9' 4" S
- old Post hole 9' 2" S
- old Post hole and rotten oak 9' 5" S
- " " " " " " 9' 5" S
- " " " " " " 9' 2" S
- " " " " " " 9' 0" S
- 24" concrete post E line of cemetery
and fence to east (May 20, 1913 extop)
- Stone set by Wright (1924 Book Page) 6' 6" S
- S.W. cor old frame house 1' 5" N
- N. side 30" Elm 6' 7" S
- S.E. corner old frame house 2' 7" N

section line

(37)

(36)



North ↑

Kauffman

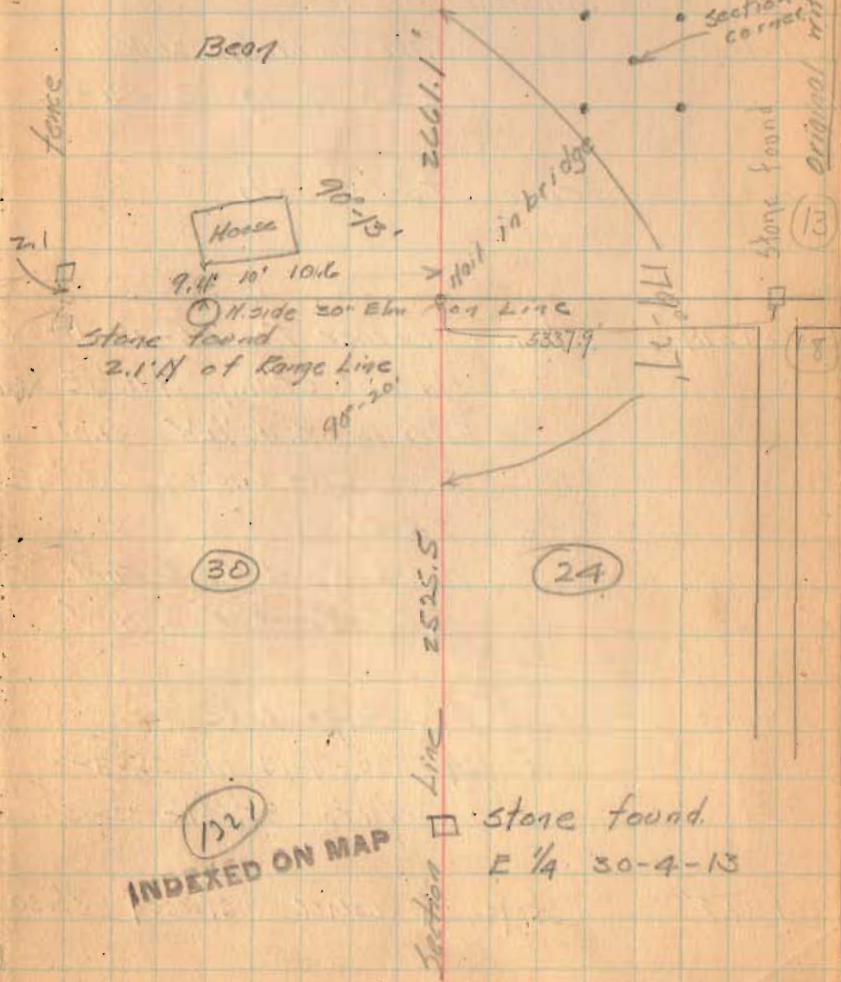
(Line - Easton Survey 2.05 Acres see Page 80 this Book)

(25)

(19)

Church Lot 2 1/4 A.

Stone found. E 1/4 25-3-14



Section Line

Beaer

(30)

(24)

INDEXED ON MAP

(121)

Section Line

Stone found. E 1/4 30-4-13

section corner witness

(13)

(18)

East on Range Line
between 24-4-13 and
19-3-14
on apparent $\frac{1}{4}$ Road

0+00

Spike in bridge 26+70
E at $\frac{1}{4}$ 30-4-13

26+70

fence to south

53+37.9

Stone corner to 13-19-18-24
old oak stump $N 16^{\circ} 42' E$ 23.4'
E. lm 12" S. $40^{\circ} 12' W$ 36.0'
Double wild cherry S. $30^{\circ} 14' E$
35.5'

On $\frac{1}{4}$ Road to S and
on $\frac{1}{4}$ Road E and W.

East on Range Line
between 30-4-13 and 25-8-4

0+00

Stone corner to 25-31-30-36

26+39.8'

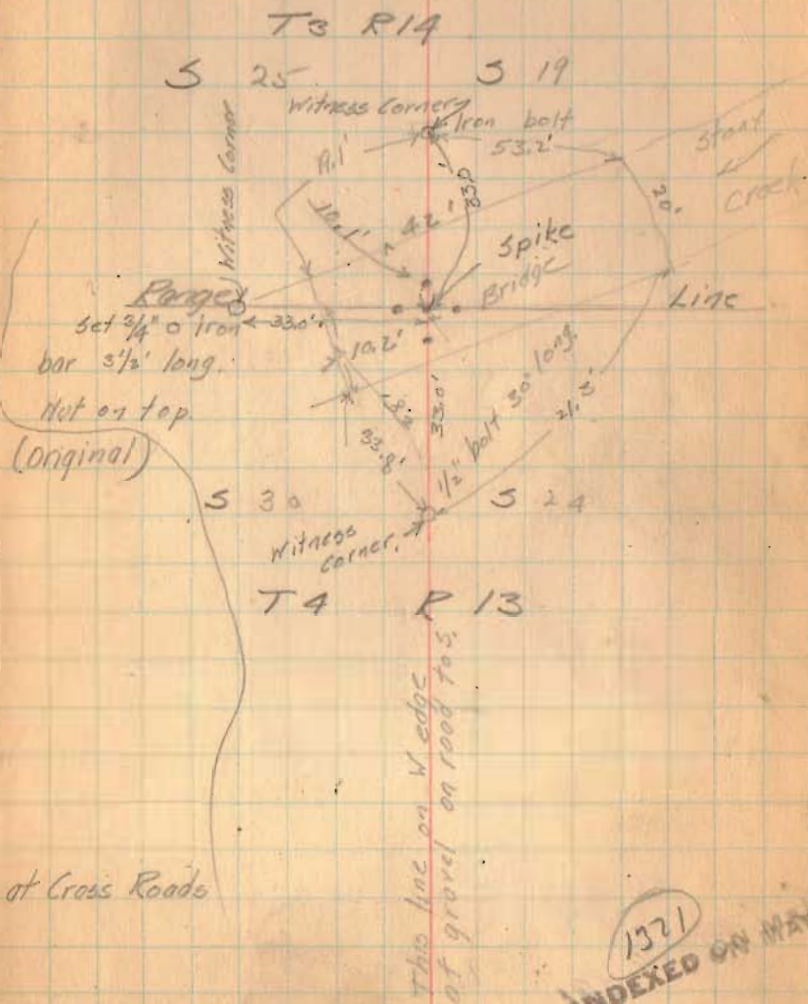
stone $\frac{1}{4}$ corner between 25 & 30

53379

45
70
46.20
52.9
11.7

4/13
2/18

75



1371
INDEXED ON MAP