



5/3/43

Found large pointed stone at
1/4 cor between Sec 5 and 11.
Brick was found around stone.
Mon. Set 4" below road surface
Stone Removed.

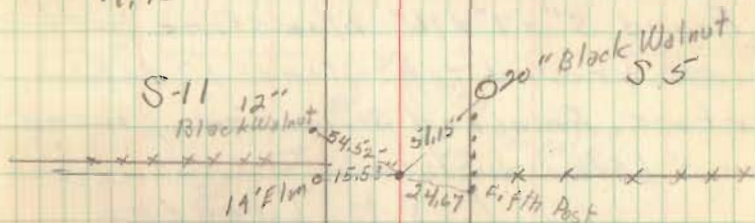
J. H. Inskip
Lanc MERS
Paul Fout

65

Rd
187

Rd 30

T. A
R. 13



Witness Thesis
OSU. 1943 P66
Extension
Application of
Horizontal Control
By Corey Harper
Mansueti

INDEXED ON MAP

2677

Union Twp.

Rd 187