

Roth to Inskeep Survey Description

September, 1971

Being situated in Union Township, Logan County, Ohio; and being a part of Section 13, Town 3, Range 14.

Beginning at a iron on the west side of a corner post in the east line of said Section 13 that bears North 1753.0 feet from the southeast corner of Section 13. Said beginning point is also the southwest corner of a 54.00 acre tract.

Thence S $89^{\circ} - 25'W$ 742.0 feet to a iron.

Thence North 958.0 feet to a iron.

Thence N $89^{\circ} - 25'E$ 742.0 feet to a concrete post in the east line of said Section 13.

Thence with the east line of Section 13 South 958.0 feet to the point of beginning.

Containing 16.32 acres more or less. Being surveyed from a 40.00 acre tract.

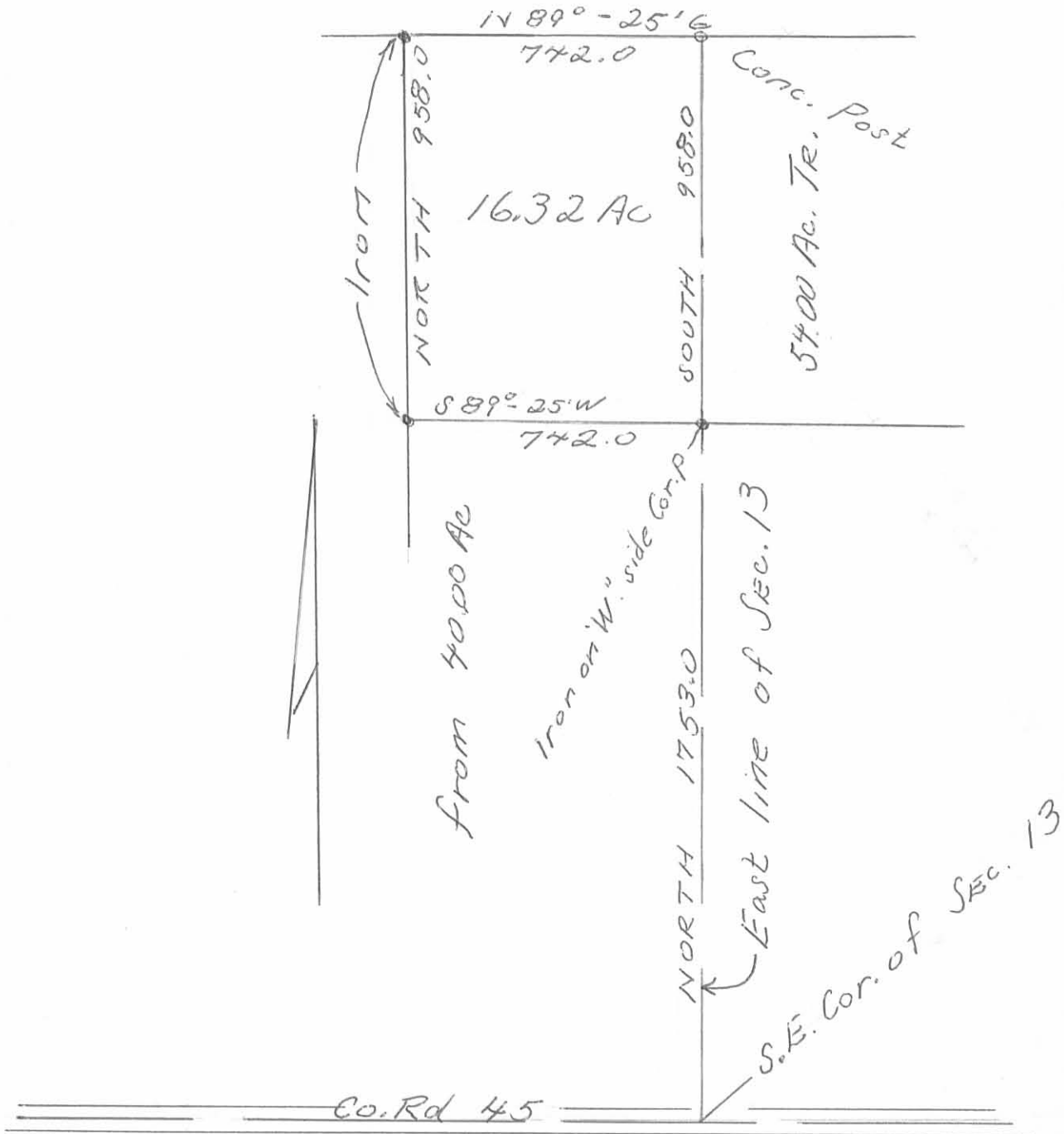
Owen K. Shirk

Surveyor 4271

INDEXED ON MAP

5047 1D

ROTH TO INSKEEP SURVEY
 UNION TWP., LOGAN CO., OHIO
 SECTION 13, TOWN 3, RANGE 14 - 1 = 400'



Owen K. Shirk
 Surveyor 4271
 Surveyed: 9:25:17

INDEXED ON MAP
 5047 1P