

186 at 100 poles came to the south bank of the 186
 lake upland to by A Snoddy in said depn, which lake
 is 30 poles wide; at 160 poles took the ^{rather east of the} deposition of John
 Moore et al and the depn of G. J. Dunn et al continued
 to 320 poles, to a stake in the edge of a prairie —
 Hence with the line between Secs. 1 & 2 in said T & R
 189^o C came to the side of deep pond at 60 poles, which
 is 42 poles wide, passed the original go. sec. corner
 at 164 poles, one of the bearing trees is yet standing and
 bears S 85 E 10 Links dist. the root & place of the other was
 found, continued 320 poles to the original corner of
 Secs 1 & 2 a white oak, originally marked when 26th Feb,
 bears N 21 W 30 L a hickory, 16th Feb. N 40 W 65 L — Hence
 with the line between T 3 & 4 (the 1st 320 poles to the
 original corner of said Township, a white oak 16th Feb.
 N 62 W 18 L yet standing — the other a white oak N 75 E
 12 L. is down, but the root is remaining — Hence with
 the line between R 13 & 14 or 89th 320 poles to the be-
 ginning — The red line shows the claim of the
 def^t

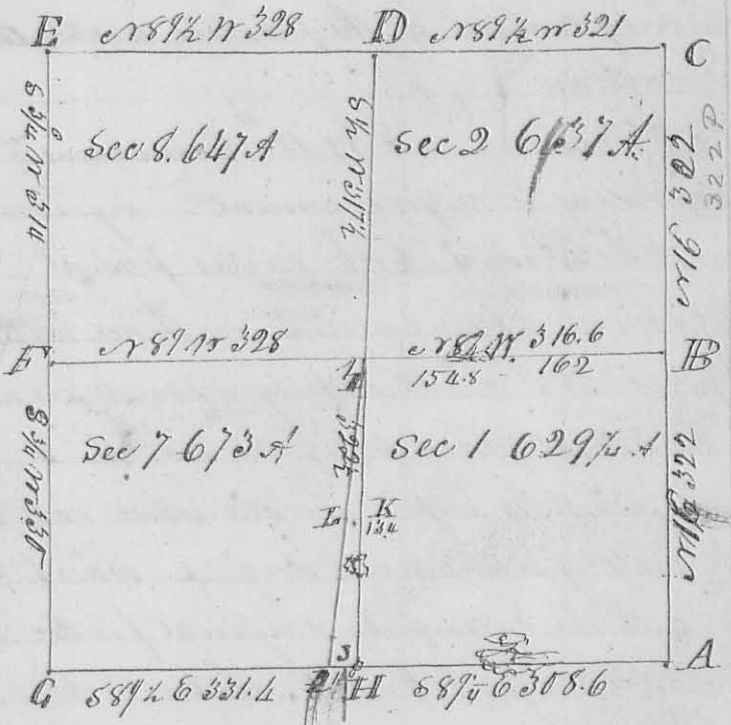
Robert McManmon }
 Abram Snoddy } 66. }
 J. McManmon } 65. }
 66. }
 65. }
 66. }

8704 8th mo. Aug 5th 1834 } Survey No 220
 Doc et dem. } Logan Corn. plat April term 1834
 Vincent Gray }
 & } In Ejectment
 Richd. Roe }

In obedience to an order of said Court
 made in the above case at said term, and in ac-
 cordance to a notice served on the Pltff in said
 cause, by the defendant in the same, which said
 notice said Pltff acknowledges service of on the
 29th of July A^d 1834, I proceeded on the 5th day of
 August to survey the premises in controversy, under
 the directions of said Defendant and Attorney —

Beginning at the corner of Townships $N^{\circ} 4 + 5$
 $R^{\circ} 13 + 14$ $T^{\circ} 3 R 14$ $N^{\circ} 14$, this being the south east corner
of Sec. 1 in $T^{\circ} 3 R 14$ $N^{\circ} 14$, the original bearing trees here
as called for by the notes which I have for each of these
Townships are a "white oak 14 in. diam $N 65^{\circ} E 12 L$, a white oak
16 in. diam $N 62^{\circ} W 18 L$ " the former of these is fallen, the root
is remaining. — Thence with the line between Towns $3 + 4$
 $R 14$ and Sec. 14 + 1 in said Town, $N 63^{\circ} 22' poles$ to the ori-
ginal corner between said Sec. 14 + 2 $T^{\circ} 3 R 14$ & Sec. 31 + 32
 $T 4 R 14$, represented on the plat by the letter B, original
bearing trees standing a "white oak 26 in. $S 21^{\circ} W 35 L$
a hickory 16 in. $N 44^{\circ} W 65 L$ " — Continued on the
same course between Sec. 2 + 32 of $T^{\circ} 3 R 322$ poles to
the original between Sec. 2 + 32 + 33 of said $T^{\circ} 3 R 14$
a "white oak 14 in. $S 62^{\circ} E 10 L$, a black oak 25 in
 $N 78^{\circ} W 28 L$ — Thence between Sec. 2 + 3 $T^{\circ} 3 R 14$ $N 89^{\circ} 1/2 W$

(Cropped a prairie
a small branch
twice at 40 poles)
321 poles poles
to the original
corner between
Sec. 2 + 3, 7 + 8
in said Town +
R a "white oak
12 in. $N 69^{\circ} E 8 L$
a hickory 10 in.
 $S 57^{\circ} 1/2 W 38 L$ "



the former trees at
this corner is down

the sign of the roots yet remaining — Continued same course
between Secs 8 + 9 same $T^{\circ} 3 R$ (cropped a small branch at
180 poles) 328 poles set a stake in a prairie 5.6 poles south
of the end of the line between Sec. 14 + 15 (the original
field notes call for a stake here) Thence with the old
line between Sec. 8 + 14 $N 76^{\circ} W 314$ poles to the original corner
between Sec. 7, 8 13 + 14 — the original bearing trees are down

yet there are some remains of their roots here. — Continued same course between secs 7+13 330 poles to the original corner of sec 7+13 T3 R14 and sec 12+18 T4 R13. — The original bearing trees a "white oak 18 S.D. 248 N 56 E. a white oak 22 S.D. 269 E 51 E" both yet standing. — Thence on the original line between said T4 R13 & T3 R14 589 1/2 Escaped a small branch at 43 poles 316 paced a stake at the end of the line between secs 6+12 T4 R13 328 poles, set a stake in a prairie. — Continued S 89 1/4 E on the old line (came to a deep pond at 186 poles, which is 60 poles wide 392 poles to the place of beginning including sections in the S.E. corner of said T3 R14. —

From the corner between sec 14+2 with the original line 289 1/2 N 162 poles, found the original gr sec corner between sec 14+2 as per field notes a "white oak 16 S.D. 326 N 8 a white oak 16 S.D. 355 E 10 E, the latter is standing, the place of the former was found, continued, came to a deep pond at 228 poles, 42 poles wide, set a stake at 320 poles at figure 1 near the letter I. then adjourned by consent of the parties until the 12 inst

Ja Broughton

Robert McNeal

} 6.6.

May 12th

recommenced to survey again according to adjournment — beginning at the corner of sec 2+8, at the letter D both parties present Daniel Robinson & Daniel Merut chain carriers. — Thence with the original line between sec 2+8 T2 R14 crossing a small branch 238 poles to the line 1 B 3.2 poles east of figure 1 at the I. — Continued same course, at 156 poles paced an old white oak stump, and the place where the roots of a tree were dug up, which correspond very nearly with the eases of the original field notes for the gr sec corner between sec 14+7, but whether either the stump remaining or the tree whose roots were dug up were ever marked it is now impossible for me to say, at 212 poles came to a deep pond which is 30 poles wide 320 poles set a stake at the letter II. — Then traveled to the end of the line II B and began at figure 1, and continued said line 289 1/2 N 324 poles to the corner between sec 7+13 found the 8+14 (pacing the original gr sec corner at 160 poles) The red line drawn from the point I through the point II to the figure 2 represents a line drawn from

from the intersection of the lines E B + D H and passing
 by the place which the Plff. claims to be the original gr. Sec.
 corner between Secs 14 & 7, and terminates on the range line
 12 poles west of the north end of the line between Secs 6 & 12
 in T4R13 which line is drawn with red ink and its inter-
 section with said R line is represented by the figure 3. —

The number of acres in each section as represented by the
 black drawing is represented by the figures thereon. —

Daniel Robinson }
 David Merritt } J. M. Mearns
 C. S. L. C.