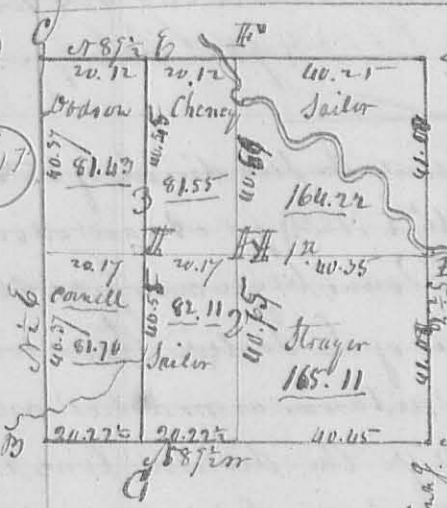


N^o 232

Surveyed July 20th 1834 for George Hony part of the S. E. quarter of 136 T. 4. R. 13 W. 2 S. as follows beginning at the S. E. corner of the Quarter Section of John Cheny N 3/4 E 18 ch 68 Links to White Oak 23 S 1/2 N 46 89 Links Bur Oak 24 S 1/2 N 14 W 1 ch 10 links dit. then West 39 ch 50 Links to White Oak 12 S 1/2 S 66 E 13 Links and White Oak 6 S 1/2 S 77 W 15 1/2 Links then S 3/4 E 18 ch. 68 Links to the corner of the section then East 39 ch 50 links to the beginning - containing 73⁵⁰ Acres, being the South half of said section -

2316

N^o 233



The annexed plat represents the survey and sub-division of T. 4. R. 13 W. 2 S. the distances are marked on the lines of the plat together with the course of the section lines - The division lines are parallel to the section lines, as follows - The first division line begins on the center of the west line of the section at a White Oak 15 S 1/2 N 43 E 54 Links, and

White Oak 18 S 1/2 N 65 W 68 links, then East 80 ch. 70 links to a stake in a prairie, center of the East line of the section at G on the plat. The second division line begins at the center of the South line of the section equi. distant from each section corner at White Oak 15 S 1/2 S 49 E 23 links and White Oak 8 S 1/2 N 80 W 15 links - then N 2 E 81 ch. 25 passing corner at H at 40 ch 75 links, a White Oak 22 S 1/2 N 43 E 48 Links, then S 1/2 W 12 S 1/2 S 63 W 56 links, crossing creek at 71 ch. passing a bend thereof at 75 ch to a Jack Oak 12 S 1/2 S 89 E 58 1/2 Links in center of North line of the section at F. The third division line begins on the center of the North line of the section equi. distant from each gr. corner, at Black Walnut 2 1/2 S 1/2 W 23 1/2 links and Black Walnut 4 S 1/2 N 23 1/2 E 32 links, then S 1/2 W 81 ch. passing corner I, at 40 ch 45 links, a White Oak 15 S 1/2 S 46 E 16 links, Sugar 18 S 1/2 N 14 W 29 links - 80.35 to corner at C, a White Oak 24 S 1/2 S 48 W 14 1/2 Links and White Oak 24 S 1/2 N 21 W 46 Links -

John Sailer }
John Cheny } ch. car.
July 13th 1834

D. Hopkins, Surveyor.