

March 1835

213

then S 78° 2' 118 1/2 poles to stem & White Oak then N 115° 1/2 200 poles to stake in the North line of the Survey, then N 78° 2' E 118 1/2 poles to the beginning (at an ash & Hickory) containing 150 acres - Also

Hay's

Surveyed for Hay's as follows, beginning at the stem & White Oak corner in the fore going lot, then S 78° 2' N 118 1/2 poles to a stake in a prairie, then N 115° 1/2 200 poles to a stake in a prairie, then N 78° 2' 118 1/2 poles to a stake NW corner to Kaskias lot, then N 115° 1/2 200 poles to the beginning containing 150 acres

San Hoptain S. Sawyer

N<sup>o</sup> 267

Surveyed March 7<sup>th</sup> 1835 for Isaac Morris the E quarter of Sec 24 T3 R 14 M. beginning at the S corner of the section, then North West chain ending creek at 2 & 5 chains to a White Oak 18 1/2 D N 30° E 23 links, and White Oak 18 1/2 D 138 1/2 West links, then North 40 ch 55 links to a White Oak 15 1/2 D West 26 links, and same 18 1/2 D S 47° 10' 30 links, then South 20 chains, 80 links to original pt. corner on the South line, then East 40 ch 50 links to the beginning, containing 166 <sup>24</sup> 1/2 acres also Surveyed off the North side of said quarter section

(8342)

Benjamin

6 acres

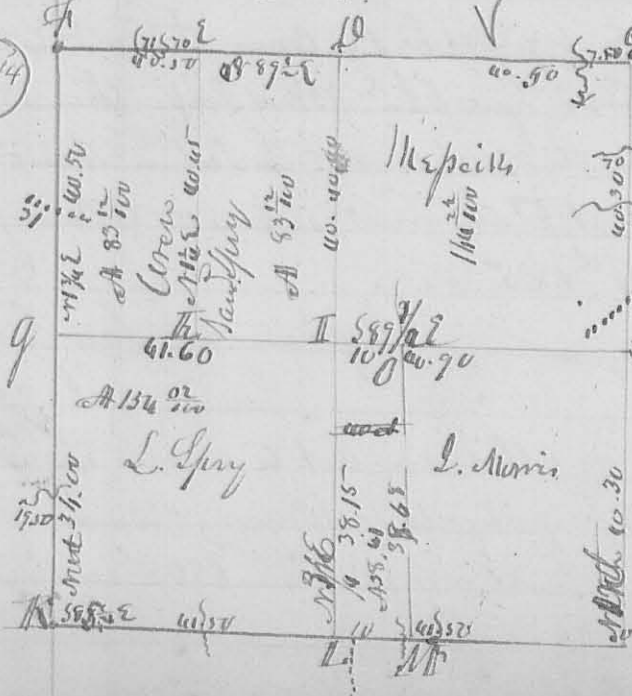
for Benjamin Benjamin beginning the North East corner then West 20 ch 55 links to the Northwest corner then South 20 ch 50 links to a White Oak 15 1/2 D N 60° E 30 links, same 26 1/2 D S 45° 27' links, then East 40 ch 55 links to a stake in a prairie, then North 9 ch 80 links to the beginning containing 40 acres

San Hoptain Surveyor S. C.

N<sup>o</sup> 268

S 18 5/4 R 12 M R

(8344)



the course & distance of the lines of this Survey are marked on the plat. Description of corner as follows. At Section Corner S White Oak 16 1/2 D N 26° 21' E. East corner. L White Oak 12 1/2 D N 30° E 20 links, same S 65° E 12, at E White Oak 12 1/2 D S 63° E 46 B. Oak 16 1/2 D S 67° E 39° N. At East corner White Oak 52 N by L. same N 10° E 34 links, at g. Red Oak N 70° E 130 links, original g. corner. To White Oak 12 1/2

March 1835

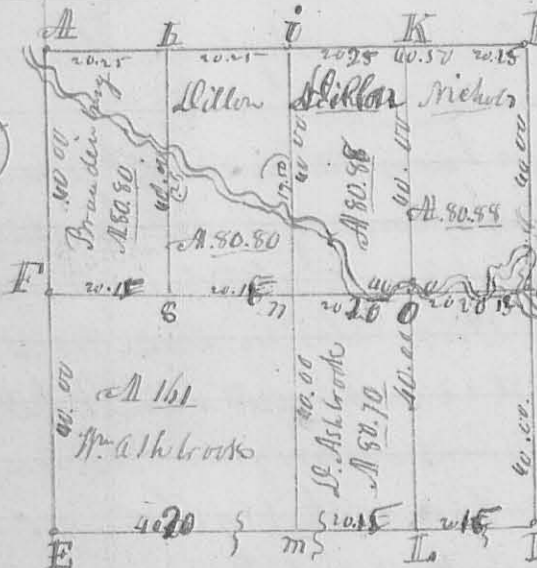
N7E 70 links. Hickory Grob 1 1/2 D 511 W 4 1/2 links. at II White Oak 15 1/2 D N39W 23 links. Sand 12 1/2 D S53E 44 links. L. White Oak 20 1/2 D. 160 W 35 Sand 18 1/2 D S85E 46 links. All States in a plain, O. White Oak 15 1/2 D S76E 31 1/2. Jack 15 1/2 D 160 W 31 1/2

John Spry  
Joseph Morris & others March 11<sup>th</sup> 1835

Land Captain L. C. Sawyer

N<sup>o</sup> 269

8335



This Plot is the record of the sub-division of Sec. 12 R 8 E. Origin and bearing of the lines N5°10' W. present variation from the original course is 7° W - the length of each line, and the contents of each lot - marked on the plot.

Description of the corners of A B C D, section corners. C Buck 30 1/2. Corner tree F. original corner of the West Line of the section. at G Red

Oak 12 1/2 D N56W 5 1/2 Links. Pin Oak 3 1/2 D S46E 9 Links. H Buck 18 1/2 D N77W 24 Links. and Birch 6 1/2 D S93W 27 Links. at I States no corner made, at N Red Oak 36 1/2 D N25W 13 Links. Buck Eye 12 1/2 D N85W 24 Links. Original G. L. Corner. L Buck 8 1/2 D N77W 35 Sand 18 1/2 D S45W 17 Links. at O Lyons 18 1/2 D S97W 17 Links. Buck Eye 10 1/2 D S45E 58 Links. Hickory 5 1/2 D S35W 33 Links. also Surveyed 5 ans from Brandenburg off the SW q. begin at his E. Corner, thence S 3 E 2 ch. 50 W to a Gray oak 8 1/2 D S87W 15 Links. Lyons 6 1/2 D N57W 4 Links. then S 85 1/2 W 20 ch. 15 Links. to a States in the west line of the section then W 24 W 2 ch. 47 Links. to the G. L. Corner at F. thence N 85 1/2 E 20 1/2 - to the beginning Surveyed March 16<sup>th</sup> 1835

L. Captain L. C. Sawyer

N<sup>o</sup> 270

In pursuance of an "Act" entitled "an Act to enable the holders of Land within this State to perpetuate testimony relative to their lands." Proceeded on the 18<sup>th</sup> day of March 1835, on the application of George Korman, Jonathan Korman and Joshua Redd to plant corner stones at the N.E. & N.W. corners of said George Korman