

282

thence West 58/100, crossing a branch at 25 poles to a Stake in Knopf's said Lin. thence with said Lin North 55.2/100 poles, crossing branch at 25 1/2 and on at 36 p. to the beginning. Containing 20 acs. Peter Knopf, J. F. Knemkopf et al. men.

Dan Hopkins Co. S. T. C. O.

N^o 406

8420

Surveyed March 14. 1838 a Lin between William McV^olts and David Shields, Heir. as follows.

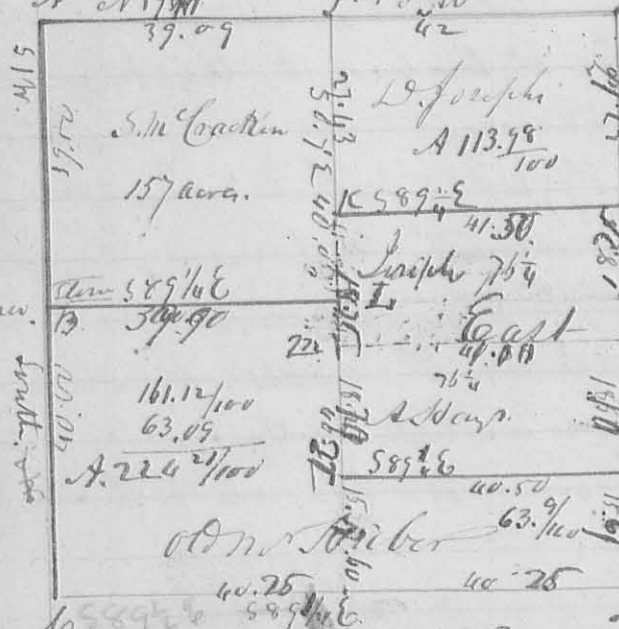
Beginning on the line dividing S. 34. T. 5. R. 13 N. W. 1/4 from north to south. and N. 69 ch 37 Links from a stem in the center of the South line of said section at a White Oak 24 1/2 ch 12 Links thence S 87 1/2 E 62 ch 65 Link to a stem in the East Lin of said section and N. 69 ch. 37 Links from J. P. Miller N. W. corner -

Dan Hopkins Co. S. T. C. O.

N^o 407

8425

Survey and Subdivision of S. 74. R. 13 N. W. 1/4 for Saml McFrank on Dan. Joseph, Alfred Hays and Horner made March 23rd 1838. Boundaries James Carter et al. men.



Description of Corners.

G. A. NW Corner of the section the original bearing true down planted stem and marked W. Oak 15 1/2 D. 55 7/8 61 Links - B. Oak 12 D. N. 32 1/2 18 links planted stem. C. SW Sect corner. planted stem in a Stake and D. Bur. 0 12 N 52 E 17 Links. E - Jack oak 8 1/2 D. 589 1/4 65 Links. F. Bur. Oak 6 1/2 D. N 37 W 8 Links ditto G. S. 6 1/2 D. 64 Links. G. Stem. H. Jack oak 10 1/2 D. N 10 E 11 Links. ditto I. 6 1/2 D. 523 E 9 Links. J. Stem. orig. tree standing a white oak 20 1/2 D. 542 E 29 Links. K. Stem. I. Mickay 6 1/2 D. N 50 W 15 Links Jack oak 3 1/2 D. 564 E 18 Links. M - Bl. Oak 15 1/2 D. N 30 E 29 Links. an oak 500 W 15 Links -

Dan Hopkins Co. S. T. C. O.