

Received 2-23-94
OK gen.



Lee Surveying and Mapping Co.



Farm Surveys • Lot Surveys • Topography • Subdivisions • Construction Layout

143 EAST COLUMBUS AVENUE
BELLEFONTAINE, OHIO 43311

(513) 593-7335

JEFFREY I. LEE, P.S.

WEATHERBY 1.705 ACRES

Lying in Section 29, Town 4, Range 13, Union Township, Logan County, Ohio.

Being out of the Max Weatherby 80.0 acre tract as deeded and described in Volume 334, Page 813 of the Logan County Records of Deeds and being more particularly described as follows:

Beginning at a 5/8 inch square iron rod found at the intersection of the center-line of County Highway 30 and the south line of said Section 29. Said point is, also, the center-line of State Route 508.

THENCE, with the south line of Section 29 and the center-line of State Route 508 (60 feet wide), N 84°-24'-05" W, a distance of 590.27 feet to a railroad spike set at the TRUE POINT OF BEGINNING.

THENCE, with the south line of Section 29 and the center-line of State Route 508, N 84°-24'-05" W, a distance of 233.75 feet to a railroad spike set.

THENCE, N 5°-35'-55" E, a distance of 328.22 feet to a 5/8 inch iron rod set.

THENCE, S 84°-24'-05" E, a distance of 218.93 feet to a 5/8 inch iron rod set.

THENCE, S 3°-00'-45" W, a distance of 328.55 feet to the point of beginning.

Containing 1.705 acres of which 0.161 acre is within the highway right-of-way.

The basis for bearings is based upon the south line of Section 29 being N 84°-24;-05" W, and all other bearings are from angles and distances measured in a field survey by Lee Surveying and Mapping Company on February 17, 1994.

Description prepared by:

Jeffrey I. Lee
Professional Surveyor 6359
February 21, 1994.

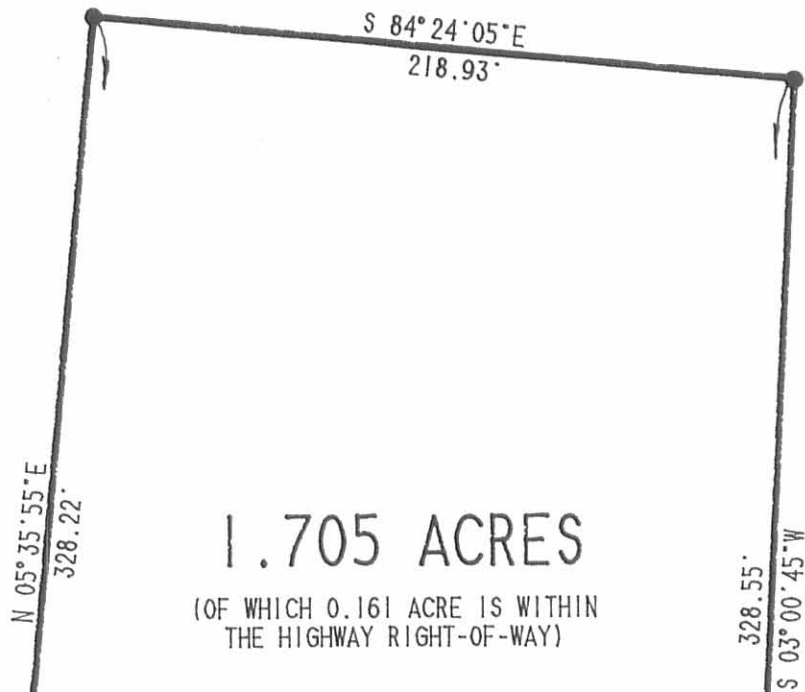


L 2160

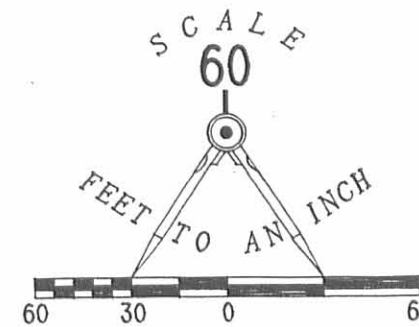
ORIGINAL STAMP IN GREEN

INDEXED ON MAP
8877 10

MAX WEATHERBY
80 ACRES
VOL. 334. PG. 813



MAX WEATHERBY
80 ACRES
VOL. 334. PG. 813



REFERENCE

LOGAN COUNTY ENGINEER'S FIELD BOOK 582. PAGES 19 AND 20.

LEGEND

- 5/8" SQUARE IRON ROD FOUND
- 5/8" IRON ROD SET
- ⊕ RAILROAD SPIKE SET

SECTION 29
SECTION 28

COUNTY HIGHWAY 30

508

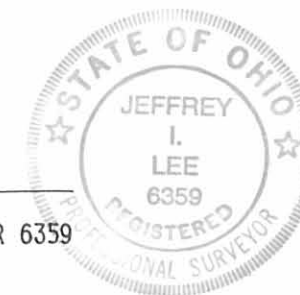
SURVEY OF 1.705 ACRES OUT OF THE
MAX WEATHERBY, 80 ACRES
VOLUME 334. PAGE 813
SECTION 29. TOWN 4. RANGE 13
UNION TOWNSHIP
LOGAN COUNTY
OHIO

INDEXED ON MAP
8877 R

2 WORKING DAYS
BEFORE YOU DIG
CALL TOLL FREE **800-362-2764**
OHIO UTILITIES PROTECTION SERVICE.

SURVEYED BY

JEFFREY T. LEE
PROFESSIONAL SURVEYOR 6359
FEBRUARY 17, 1994



ORIGINAL STAMP IN GREEN

LEE SURVEYING & MAPPING CO.
143 East Columbus Avenue
BELLEFONTAINE, OHIO 43311
(513) 593-7335

D233 MWTHRBY L 2160-3