

**LESLIE H. GEESLIN**

REGISTERED SURVEYOR 5248

P. O. BOX 274

RUSHSVLVANIA, OHIO 43347

TELEPHONE: (937) 468-2793

KNOCH SURVEY

December 17, 1997

The following described real estate situated in the State of Ohio, County of Logan, Township of Union, being part of the northwest quarter of Section 11, Town 4, Range 13, and more particularly described as follows:

Beginning at a monument box with stone found at the northwest corner of said Section 11, and the intersection of the centerlines of Township Road 30 and County Highway 18.

Thence with the north line of said Sec. 11 and the centerline of said T. R. 30 S. 88° 59' 55" E. 562.87 feet to a magnetic nail set at the northwest corner of Donald King, et al's 122.12 acre tract as described in O. R. Vol. 184 Page 119.

Thence with said King's west line S. 0° 01' 42" W. 2665.05 feet to an 8 inch wood post found at the northeast corner of Stephen Yoder's 51.082 acre tract as described in O. R. Vol. 336 Page 820, passing a 12 inch by 12 inch concrete post found at 20.00 feet, the right of way of said T. R. 30 at 30.00 feet, and 5/8 inch iron bars set at 1099.88 feet and 2074.17 feet.

Thence with said Yoder's north line N. 89° 36' 31" W. 231.47 feet to a 5/8 inch iron bar set at the southeast corner of Martin Cromes, et al's 4 acre tract as described in O. R. Vol. 90 Page 516.

Thence with said Cromes' east line NORTH 528.00 feet to a 5/8 inch iron bar set.

Thence with said Cromes' north line N. 89° 36' 31" W. 330.00 feet to a magnetic nail set in the west line of said Sec. 11 and the centerline of said C. H. 18, passing the right of way of said C. H. 18 at 300.00 feet and a 5/8 inch iron bar set at 305.00 feet.

Thence with the west line of said Sec. 11 and the centerline of said C. H. 29 NORTH 2143.05 feet to the place of beginning.

Containing 30.430 acres more or less of which 0.367 acre in the right of way of Township Road 30 and 1.476 acres are in the right of way of County Highway 18.

The above described 30.430 acre tract being a new survey of Fern Vanness' 30 acre tract (Tr. 1) as described in D. B. Vol. 250 Page 89

Bearings are based on an assumed bearing (NORTH) for the centerline of County Highway 18 in this field survey by Leslie H. Geeslin, Reg. Surveyor 5248 on December 17, 1997



*Leslie H. Geeslin*

INDEXED ON MAP  
9170 1D-1

**LESLIE H. GEESLIN**

REGISTERED SURVEYOR 5248

P. O. BOX 274

RUSHSVLVANIA, OHIO 43347

TELEPHONE: (937) 468-2793

KNOCH SURVEY

December 17, 1997

The following described real estate situated in the State of Ohio, County of Logan, Township of Union, being part of the northeast quarter of Section 17, Town 4, Range 13, and more particularly described as follows:

Commencing at a monument box with stone found at the northeast corner of said Section 17, and the intersection of the centerlines of Township Road 30 and County Highway 18.

Thence with the east line of said Sec. 17 and the centerline of said C. H. 18 SOUTH 551.47 feet to a magnetic nail set at the southeast corner of Charles G. Turner, et ux's 7.71 acre tract as described in D. B. Vol. 360 Page 138 for the point of beginning of this description.

Thence with the east line of said Sec. 17 and the centerline of said C. H. 18 SOUTH 1636.06 feet to a magnetic nail set at the northeast corner of Jon C. Swartz, et al's 2.50 acre tract as described in D. B. Vol. 378 Page 512.

Thence with said Swartz's north line and the north line of Donald King, et al's 41.52 acre tract as described in O. R. Vol. 81 Page 299 N. 89° 19' 58" W. 573.32 feet to a 5/8 inch iron bar set, passing a 5/8 inch iron bar set at 25.00 feet and the right of way of said C. H. 18 at 30.00 feet.

Thence with said King's east line, the east line of Patrick J. Adams, et al's 42 acre tract (Tr. 1) as described in D. B. Vol. 344 Page 311 and the east line of Richard W. Dye, et ux's 10 acre tract as described in O. R. Vol. 290 Page 886 N. 0° 49' 04" E. 1652.57 feet to a 12 inch concrete post found at said Turner's southwest corner, passing 5/8 inch iron bars set at 589.93 feet and 917.61 feet.

Thence with said Turner's south line S. 87° 36' 09" E. 550.17 feet to the place of beginning, passing the right of way of said C. H. 18 at 520.14 feet and a 5/8 inch iron bar set at 525.15 feet.

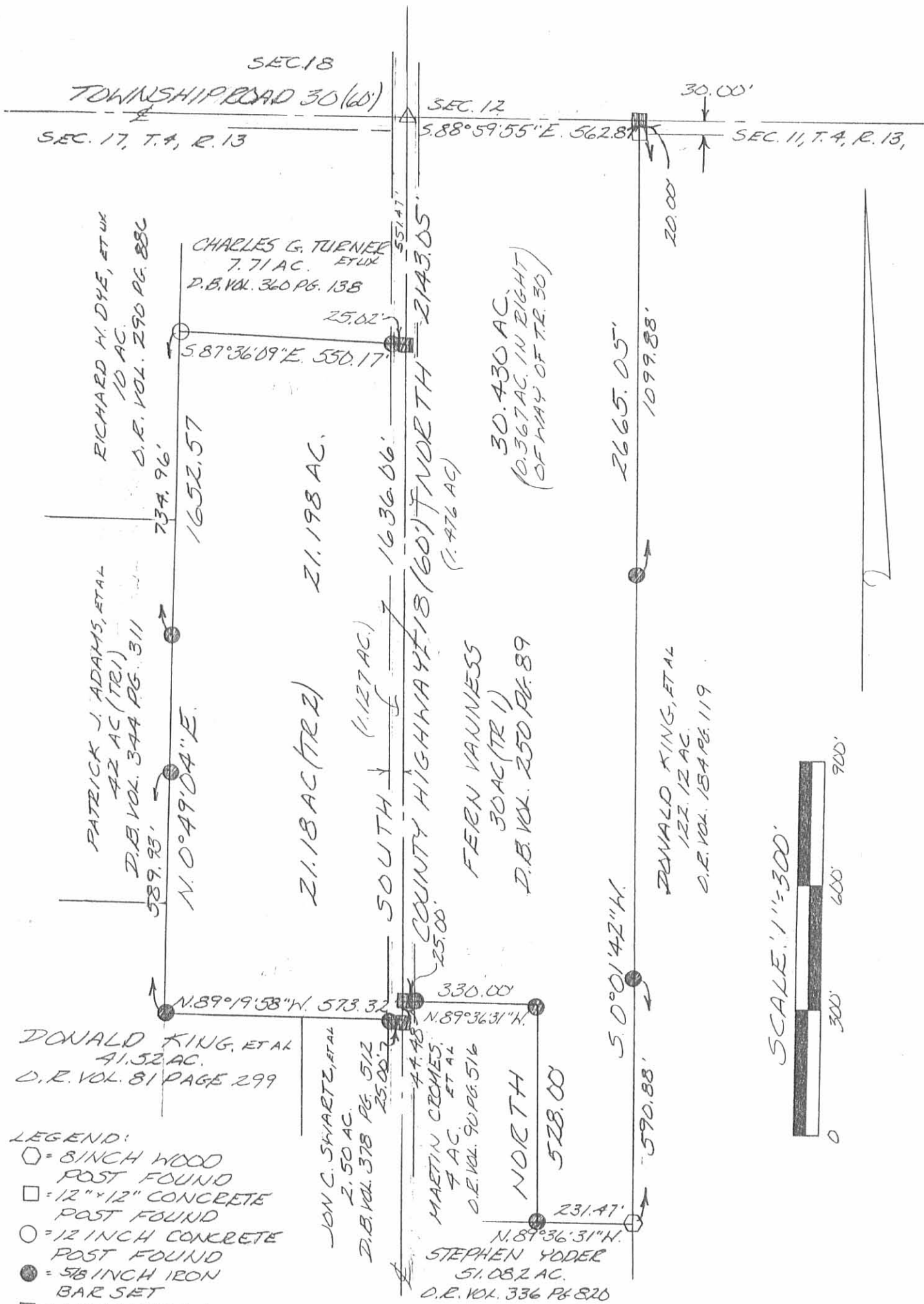
Containing 21.198 acres more or less of which 1.127 acres are in the right of way of County Highway 18.

The above described 21.198 acre tract being a new survey of Fern Vanness' 21.18 acre tract (Tr. 2) as described in D. B. Vol. 250 Page 89.

Bearings are based on an assumed bearing (SOUTH) for the centerline of County Highway 18 in this field survey by Leslie H. Geeslin, Reg. Surveyor 5248 on December 17, 1997



*Leslie H. Geeslin*



DONALD KING, ET AL  
41.52 AC.  
D.R. VOL. 81 PAGE 299

RICHARD H. DYE, ET AL  
10 AC.  
D.R. VOL. 290 PG. 88C

PATRICK J. ADAMS, ET AL  
42 AC (TR 1)  
D.B. VOL. 344 PG. 311

CHARLES G. TURNER  
7.71 AC.  
ET AL  
D.B. VOL. 360 PG. 138

30.430 AC.  
(0.367 AC. IN RIGHT  
OF WAY OF TR. 30)

21.18 AC (TR 2)

1.127 AC.

FREN VAUNESS  
30 AC (TR 1)  
D.B. VOL. 250 PG. 89

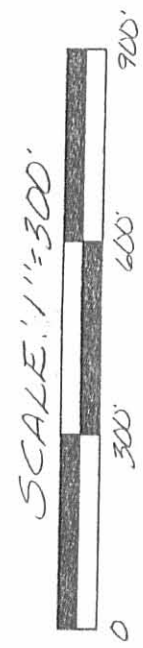
DONALD KING, ET AL  
122.12 AC.  
D.R. VOL. 184 PG. 119

JOHN C. SWARTZ, ET AL  
2.50 AC.  
D.B. VOL. 378 PG. 512

MARTIN CROMES,  
ET AL  
9 AC.  
D.E. VOL. 90 PG. 516

STEPHEN YODER  
51.082 AC.  
D.R. VOL. 336 PG. 820

- LEGEND:
- = 8 INCH WOOD POST FOUND
  - = 12" x 12" CONCRETE POST FOUND
  - = 12 INCH CONCRETE POST FOUND
  - = 5/8 INCH IRON BAR SET
  - = MAGNETIC NAIL SET
  - △ = MONUMENT BOX WITH STONE FOUND



SURVEY OF 30.430 ACRES IN SECTION 11, TOWN 4, RANGE 13 AND 21.198 ACRES IN SECTION 17, TOWN 4, RANGE 13, UNION TOWNSHIP, LOGAN COUNTY, OHIO FOR ALAN KNOCH ON DECEMBER 17, 1997



Leslie H. Geeslin  
LESLIE H. GEESLIN  
RUSHSVLVANIA, O  
(937) 468-2793

INDEXED ON MAP  
9170 IP

REC'D 10-26-10 SMY/OK

# Lee Surveying and Mapping Co., Inc.

Land Surveys • Topography • Subdivisions • Construction Layout

117 N. Madriver St.  
Bellefontaine OH 43311



Phone: (937) 593-7335  
Fax: (937) 593-7444  
surveys@lsminc.us

## EDWARDS 15.211 ACRES

Lying in Section 11, Town 4, Range 13, Union Township, Logan County, Ohio.

Being out of the Roland E. Edwards and Katherine S. Edwards 30.430 acre tract as deeded and described in Official Record 762, Page 925 of the Logan County Records of Deeds and being more particularly described as follows:

Commencing on a MAG nail found over a monument box on the northwest corner of Section 11 and on the intersection of the center-lines of Township Road 30 and County Highway 18.

THENCE, with the west line of Section 11 and the center-line of County Highway 18 (60 feet wide), S 00°-00'-00"W, a distance of 1340.27 feet to a MAG nail set at the TRUE POINT OF BEGINNING.

THENCE, S 90°-00'-00"E, a distance of 562.09 feet to a point under Braden Lake, passing 5/8 inch iron rods set at 30.00 feet and 167.16 feet.

THENCE, with the west line of the Donald E. King 122.12 acre tract (O.R. 184, Pg. 119), S 00°-01'-27"W, a distance of 1491.46 feet to a point, referenced by a 5/8 inch iron rod set bearing S 35°-34'-24"W, a distance of 0.98 feet, passing a 5/8 inch iron rod set at 930.58 feet.

THENCE, with the north line of the Stephen L. Yoder, Trustee 51.082 acre tract (O.R. 934, Pg. 796), N 89°-36'-31"W, a distance of 231.59 feet to a 5/8 inch iron rod found.

THENCE, with the lines of the Martin A. Cromes 4 acre tract (O.R. 90, Pg. 516), the following two courses:

N 00°-00'-54"E, a distance of 528.00 feet to a 5/8 inch iron rod found.

N 89°-36'-53"W, a distance of 330.01 feet to a MAG nail found on the west line of Section 11 and the center-line of County Highway 18, passing a 5/8 inch iron rod found at 304.88 feet.

THENCE, with the west line of Section 11 and the center-line of County Highway 18, N 00°-00'-00"E, a distance of 959.66 feet to the point of beginning.

Containing 15.211 acres, of which 0.661 acre is within the highway right-of-way.

Property is subject to any and all previous easements and rights-of-way of record.

The basis for bearings is the west line of Section 11, being S 00°-00'-00"W, and all other bearings are from angles and distances measured in a field survey by Lee Surveying and Mapping Co., Inc. on October 21, 2010.



Description prepared by:

William K. Bruce  
Professional Surveyor 7437  
October 22, 2010

50451010

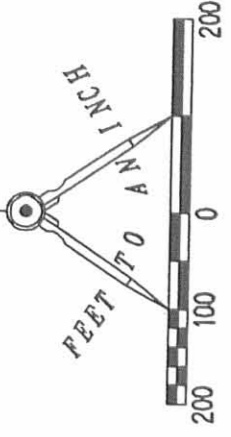


REC'D 10-26-10 8M DM

TOWNSHIP ROAD 30 (60')



SCALE 200 FEET TO AN INCH



LEGEND:

- ⊕ MAG NAIL FOUND OVER MONUMENT BOX
- ⊙ MAG NAIL FOUND
- MAG NAIL SET
- 5/8 INCH IRON ROD FOUND
- 5/8 INCH IRON ROD SET WITH PLASTIC I.D. CAP STAMPED "LSM 7437"

ROLAND E. EDWARDS AND  
KATHERINE S. EDWARDS  
30.430 ACRES  
O.R. 762, PG. 925

COUNTY HIGHWAY 18 (60')

(BASIS FOR BEARINGS)  
S 00°00'00" W  
1340.27'



30.00'

137.16'

394.93'

S 90°00'00" E 562.09'

N 00°00'00" E  
959.66'

S 00°01'27" W  
1491.46'

560.88'

930.58'

15.211 ACRES  
OF WHICH 0.661 ACRE IS WITHIN  
THE HIGHWAY RIGHT-OF-WAY

APPROXIMATE LOCATION  
OF BRADEN LAKE

DONALD E. KING  
122.12 ACRES  
O.R. 184, PG. 119

SURVEY OF 15.211 ACRES OUT OF THE  
ROLAND E. EDWARDS AND  
KATHERINE S. EDWARDS  
30.430 ACRE TRACT  
OFFICIAL RECORD 762, PAGE 925  
SECTION 11, TOWN 4, RANGE 13  
UNION TOWNSHIP  
LOGAN COUNTY, OHIO

N 89°36'53" W  
330.01'

25.13'

MARTIN A. CROMES  
4 ACRES  
O.R. 90, PG. 516

N 00°00'54" E  
528.00'

SEE  
DETAIL

N 89°36'31" W  
231.59'

STEPHEN L. YOOPER, TRUSTEE  
51.082 ACRES  
O.R. 934, PG. 796



DETAIL  
NOT TO SCALE

2 WORKING DAYS

BEFORE YOU DIG

CALL TOLL FREE 800-362-2764  
OHIO UTILITIES PROTECTION SERVICE.

SURVEYED BY:

*William K. Bruce*

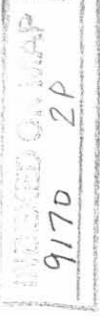
WILLIAM K. BRUCE  
PROFESSIONAL SURVEYOR 7437  
OCTOBER 21, 2010



ORIGINAL STAMP IN GREEN

COPYRIGHT 2010 BY:

LEE SURVEYING & MAPPING CO., INC.  
117 North Madriver Street  
BELLEFONTAINE, OHIO 43311  
(937) 593-7335



KSS D1010 50451010 L-5045-3