

Recd 11-3-00 of JLB

# Lee Surveying and Mapping Co., Inc.

Land Surveys • Topography • Subdivisions • Construction Layout

117 N. Madriver St.  
Bellefontaine OH 43311



Phone: (937) 593-7335  
Fax: (937) 593-7444

## BEATTY FARMS 2.184 ACRES

Lying in Section 26, Town 3, Range 14, Union Township, Logan County, Ohio.

Being out of the Beatty Farms, Incorporated original 154.978 acre tract as deeded and described in Official Record 424, Page 905, Tract I of the Logan County Records of Deeds and being more particularly described as follows:

Beginning at a concrete monument found at the northwest corner of Section 26 on the west line of Union Township on the center-line of Township Road 33.

THENCE, with the west line of Section 26, the west line of Union Township, and the center-line of Township Road 33 (40 feet wide), S 6°-00'-00" W, a distance of 855.00 feet to a railroad spike set at the TRUE POINT OF BEGINNING.

THENCE, S 84°-00'-00" E, a distance of 355.00 feet to a 5/8 inch iron rod set, passing a 5/8 inch iron rod set at 20.00 feet.

THENCE, S 6°-00'-00" W, a distance of 268.00 feet to a 5/8 inch iron rod set.

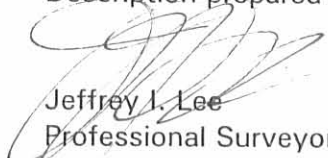
THENCE, N 84°-00'-00" W, a distance of 355.00 feet to a railroad spike set, passing a 5/8 inch iron rod set at 335.00 feet.

THENCE, with the west line of Section 26, the west line of Union Township, and the center-line of Township Road 33, N 6°-00'-00" E, a distance of 268.00 feet to the place of beginning.

Containing 2.184 acre of which 0.123 acre is within the highway right-of-way.

The basis for bearings is the west line of Section 26 being S 6°-00'-00" W, and all other bearings are from angles and distances measured in a field survey by Lee Surveying and Mapping Co., Inc. on October 17, 2000.

Description prepared by:

  
Jeffrey I. Lee  
Professional Surveyor 6359  
October 24, 2000

INDEXED ON M/P  
9258 ID



L-3043

ORIGINAL STAMP IN GREEN

RD 11-3-00 OK JLB

PALMER B. STENDEL AND  
BETTY A. STENDEL  
125.00 ACRES  
VOL. 305, PG. 179

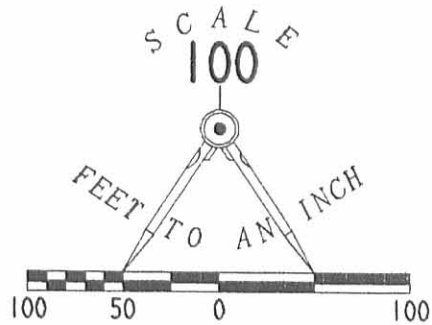


HARRISON TOWNSHIP  
UNION TOWNSHIP

PLEASANT TOWNSHIP

UNION TOWNSHIP

2.062 ACRES



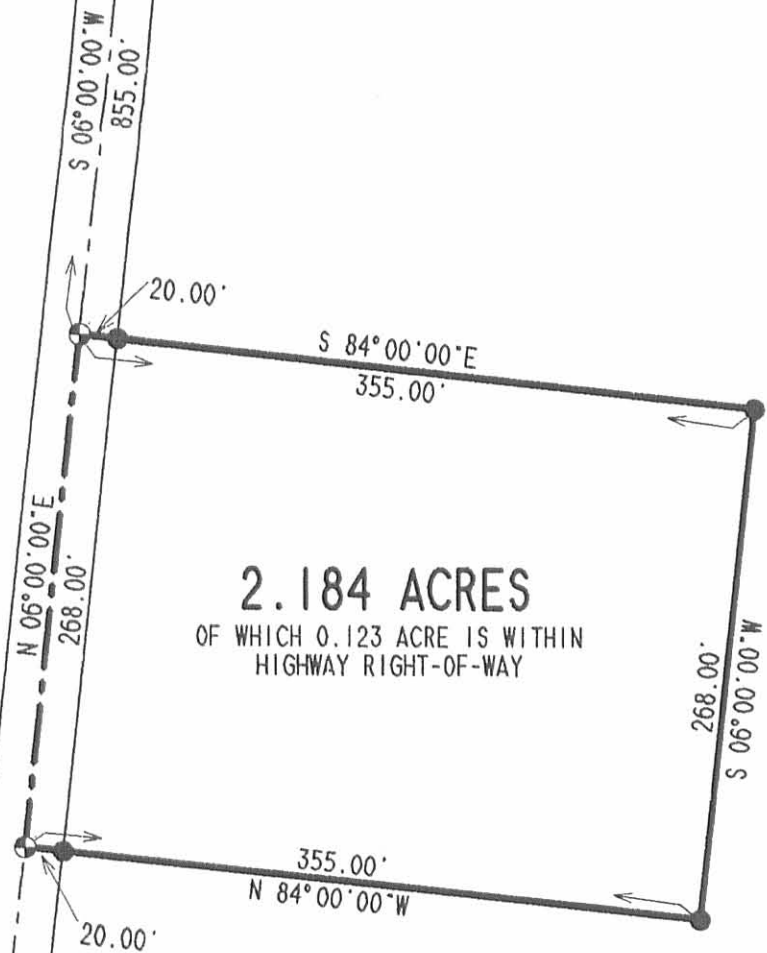
LEGEND

- CONCRETE MONUMENT FOUND
- ⊕ RAILROAD SPIKE SET
- 5/8" IRON ROD SET

REFERENCES:  
LOGAN COUNTY ENGINEER'S FILES:  
FIELD BOOK 660, PAGE 47  
FIELD BOOK 575, PAGE 40

BEATTY FARMS, INC.  
ORIGINAL 154.978 ACRE TRACT  
OFFICIAL RECORD 424, PAGE 905, TRACT 1

TOWNSHIP ROAD 33  
(40' WIDE)  
(BASIS FOR BEARINGS)



SURVEY OF 2.184 ACRES  
OUT OF THE BEATTY FARMS, INCORPORATED  
ORIGINAL 154.978 ACRE TRACT  
OFFICIAL RECORD 424, PAGE 905, TRACT 1  
SECTION 26, TOWN 3, RANGE 14  
UNION TOWNSHIP  
LOGAN COUNTY, OHIO

SURVEYED BY:

JEFFREY I. LEE  
PROFESSIONAL SURVEYOR 6359  
OCTOBER 17, 2000



ORIGINAL STAMP IN GREEN

COPYRIGHT 2000 BY:  
LEE SURVEYING & MAPPING CO., INC.  
117 North Madriver Street  
BELLEFONTAINE, OHIO 43311  
(937) 593-7335

INDEXED ON MAP  
92581P

2 WORKING DAYS  
BEFORE YOU DIG  
CALL TOLL FREE 800-362-2764  
OHIO UTILITIES PROTECTION SERVICE.

D348 GAMBEAT L-3043-3  
GAMBLE.DAT

Rec'd 6-30-99 fuf OK gch



# Lee Surveying and Mapping Co., Inc.



Land Surveys • Topography • Subdivisions • Construction Layout

117 N. Madriver Street  
Bellefontaine OH 43311

Phone: (937) 593-7335  
Fax: (937) 593-7444

## GAMBLE 2.062 ACRE

Lying in Section 26, Town 3, Range 14, Union Township, Logan County, Ohio.

Being out of the Bradford Gamble original 157.04 acre tract as deeded and described in Volume 325, Page 236, Tract I of the Logan County Records of Deeds and being more particularly described as follows:

Beginning at a concrete monument found at the northwest corner of Section 26 and on the center-line of Township Road 33 (40 feet wide).

THENCE, with the north line of Section 26, and the south line of the Palmer B. Stengal 125.00 acre tract (Volume 305, Page 179), S 83°-45'-00" E, a distance of 300.00 feet to a 5/8 inch iron rod set, passing a 5/8 inch iron rod set at 20.00 feet.

THENCE, S 6°-00'-00" W, a distance of 298.69 feet to a 5/8 inch iron rod set.

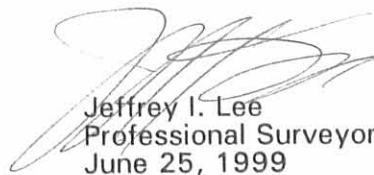
THENCE, N 84°-00'-00" W, a distance of 300.00 feet to a railroad spike set on the center-line of Township Road 33, passing a 5/8 inch iron rod set at 280.00 feet.

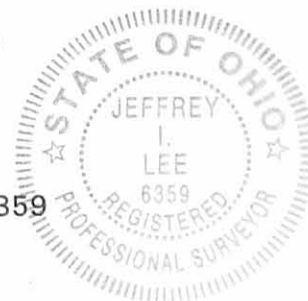
THENCE, with the west line of Section 26 and the center-line of Township Road 33, N 6°-00'-00" E, a distance of 300.00 feet to the point of beginning.

Containing 2.062 acres of which 0.138 acre is in the highway right-of-way.

The basis for bearings is the west line of Section 26, being N 6°-00'-00" E, and all other bearings are from angles and distances measured in a field survey by Lee Surveying and Mapping Co., Inc. on June 8, 1999.

Description prepared by:

  
Jeffrey I. Lee  
Professional Surveyor 6359  
June 25, 1999



L-2757

ORIGINAL STAMP IN GREEN



Rec'd 6-30-99 Jay OKGCH



# Lee Surveying and Mapping Co., Inc.



Land Surveys • Topography • Subdivisions • Construction Layout

117 N. Madriver Street  
Bellefontaine OH 43311

Phone: (937) 593-7335  
Fax: (937) 593-7444

## GAMBLE 6.006 ACRE

Lying in Section 26, Town 3, Range 14, Union Township, Logan County, Ohio.

Being out of the Bradford Gamble original 157.04 acre tract as deeded and described in Volume 325, Page 236, Tract I of the Logan County Records of Deeds and being more particularly described as follows:

Beginning at a concrete monument found at the northwest corner of Section 26 and on the center-line of Township Road 33 (40 feet wide).

THENCE, with the center-line of Township Road 33, S 6°-00'-00" W, a distance of 300.00 feet to a railroad spike set at the TRUE POINT OF BEGINNING.

THENCE, S 84°-00'-00" E, a distance of 300.00 feet to a 5/8 inch iron rod set, passing a 5/8 inch iron rod set at 20.00 feet.

THENCE, S 6°-00'-00" W, a distance of 555.00 feet to a 5/8 inch iron rod set.

THENCE, S 84°-00'-00" E, a distance of 55.00 feet to a 5/8 inch iron rod set.

THENCE, S 6°-00'-00" W, a distance of 268.00 feet to a 5/8 inch iron rod set.

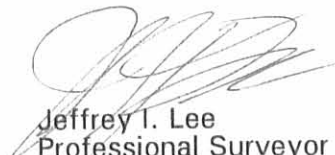
THENCE, N 84°-00'-00" W, a distance of 355.00 feet to a railroad spike set, passing a 5/8 inch iron rod set at 335.00 feet.

THENCE, with the west line of Section 26 and the center-line of Township Road 33, N 6°-00'-00" E, a distance of 823.00 feet to the point of beginning.

Containing 6.006 acres of which 0.378 acre is in the highway right-of-way.

The basis for bearings is the west line of Section 26, being N 6°-00'-00" E, and all other bearings are from angles and distances measured in a field survey by Lee Surveying and Mapping Co., Inc. on June 8, 1999.

Description prepared by:

  
Jeffrey I. Lee  
Professional Surveyor 6359  
June 25, 1999

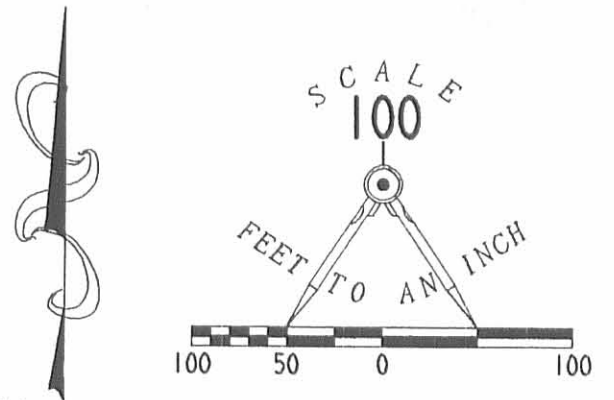


ORIGINAL STAMP IN GREEN

INDEXED ON MAP  
9258 2D-2

Rec 6-30-99 lay

PALMER B. STENGAL AND  
BETTY A. STENGAL  
125.00 ACRES  
VOL. 305. PG. 179



PLEASANT TOWNSHIP

HARRISON TOWNSHIP  
UNION TOWNSHIP

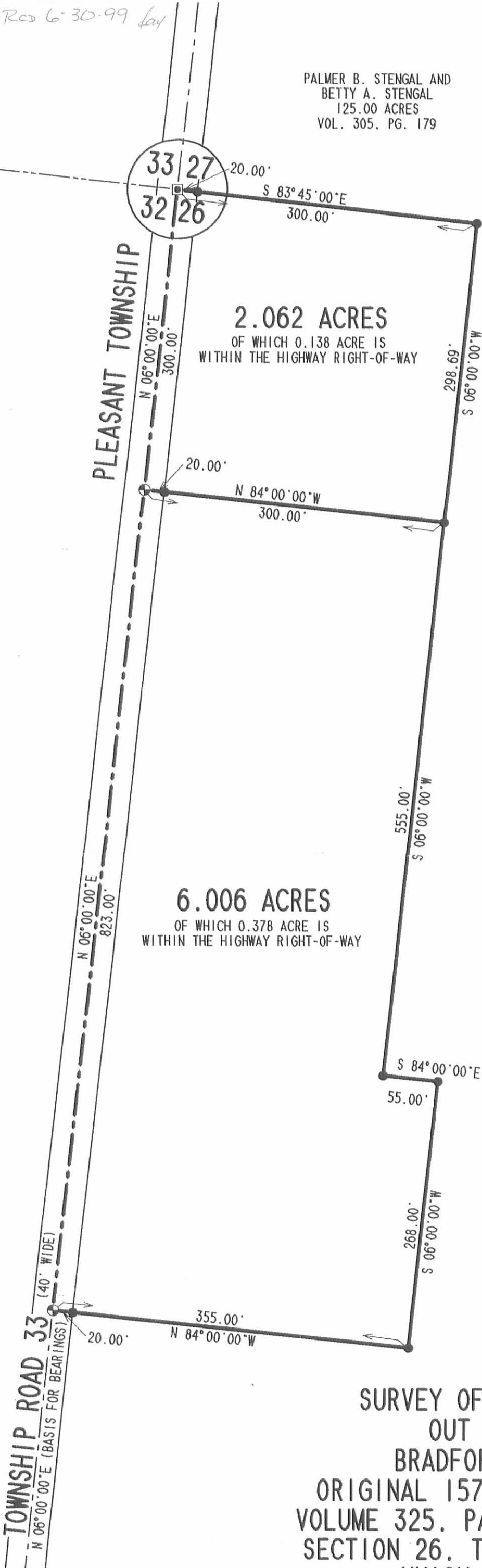
2.062 ACRES  
OF WHICH 0.138 ACRE IS  
WITHIN THE HIGHWAY RIGHT-OF-WAY

6.006 ACRES  
OF WHICH 0.378 ACRE IS  
WITHIN THE HIGHWAY RIGHT-OF-WAY

- LEGEND
- CONCRETE MONUMENT FOUND
  - ⊙ RAILROAD SPIKE SET
  - 5/8" IRON ROD SET

REFERENCES:  
LOGAN COUNTY ENGINEER'S FILES:  
FIELD BOOK 660, PAGE 47  
FIELD BOOK 575, PAGE 40

BRADFORD GAMBLE  
ORIGINAL 157.04 ACRE TRACT  
VOLUME 325, PAGE 236, TRACT 1



SURVEY OF TWO TRACTS  
OUT OF THE  
BRADFORD GAMBLE  
ORIGINAL 157.04 ACRE TRACT  
VOLUME 325, PAGE 236, TRACT 1  
SECTION 26, TOWN 3, RANGE 14  
UNION TOWNSHIP  
LOGAN COUNTY, OHIO



ORIGINAL STAMP IN GREEN

SURVEYED BY:

*Jeffrey I. Lee*  
JEFFREY I. LEE  
PROFESSIONAL SURVEYOR 6359  
JUNE 8, 1999

COPYRIGHT 1999 BY:

LEE SURVEYING & MAPPING CO., INC.  
117 North Madriver Street  
BELLEFONTAINE, OHIO 43311  
(937) 593-7335

D-348 GAMBLE L-2757-3

2 WORKING DAYS  
**BEFORE YOU DIG**  
CALL TOLL FREE **800-362-2764**  
OHIO UTILITIES PROTECTION SERVICE.

INDEXED ON MAP  
9258 2P