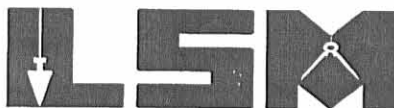


Lee Surveying and Mapping Co., Inc.

Land Surveys • Topography • Subdivisions • Construction Layout

117 N. Madriver St.
Bellefontaine OH 43311



Phone: (937) 593-7335
Fax: (937) 593-7444

HUBER 105.219 ACRES

Lying in Section 11, Town 4, Range 13, Union Township, Logan County, Ohio.

Being out of the Lois Ann Huber original 99.52 acre tract and 148 square rods tract as deeded and described in Official Record 356, Page 537, Tract One and Tract Two of the Logan County Records of deeds and being more particularly described as follows:

Beginning at a P.K. nail found on the southeast corner of Section 11 at the intersection of the center-lines of Ohio Route 508 and Township Road 187.

THENCE, with the south line of Section 11 and the center-line of Ohio Route 508 (60 feet wide), N 85°-38'-00" W, a distance of 1700.40 feet to a railroad spike found.

THENCE, with the east lines of the Stacey J. Bohannon 1.680 acre tract (O.R. 394, Pg. 396), the Linda Kilgore 13.041 acre tract (O.R. 328, Pg. 650), the Christopher R. Starbuck 7.10 acre tract and 9.25 acre tract (O.R. 475, Pg. 782, Tract V and Tract II), N 4°-22'-00" E, a distance of 2570.70 feet to a 5/8 inch iron rod set, passing a 5/8 inch iron rod found at 30.00 feet.

THENCE, N 51°-44'-37" E, a distance of 186.81 feet to a 5/8 inch iron rod set.

THENCE, with the south line of the Christopher R. Starbuck 147.09 acre tract (O.R. 475, Pg. 782, Tract I), S 85°-31'-53" E, a distance of 1568.80 feet to a railroad spike found, passing a 5/8 inch iron rod set at 1553.80 feet.

THENCE, with the east line of Section 11 and the center-line of Township Road 187 (30 feet wide), S 4°-29'-28" W, a distance of 2694.42 feet to the point of beginning.

Containing 105.219 acres, of which 2.089 acres are within the highway rights-of-way.

The basis for bearings is the south line of Section 11, being N 85°-38'-00" W, and all other bearings are from angles and distances measured in a field survey by Lee Surveying and Mapping Co., Inc. on October 4, 2002.

Description prepared by:

Jeffrey I. Lee
Professional Surveyor 6359
October 12, 2002



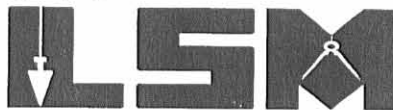
ORIGINAL STAMP IN GREEN

INDEXED ON MAP
9419 1D-1

Lee Surveying and Mapping Co., Inc.

Land Surveys • Topography • Subdivisions • Construction Layout

117 N. Madriver St.
Bellefontaine OH 43311



Phone: (937) 593-7335
Fax: (937) 593-7444

HUBER 0.200 ACRE

Lying in Section 11, Town 4, Range 13, Union Township, Logan County, Ohio.

Being out of the Lois Ann Huber original 99.52 acre tract and 148 square rods tract as deeded and described in Official Record 356, Page 537, Tract One and Tract Two of the Logan County Records of deeds and being more particularly described as follows:

Beginning at a P.K. nail found on the southeast corner of Section 11 at the intersection of the center-lines of Ohio Route 508 and Township Road 187.

THENCE, with the south line of Section 11 and the center-line of Ohio Route 508 (60 feet wide), N 85°-38'-40" W, a distance of 1700.40 feet to a railroad spike found.

THENCE, with the east lines of the Stacey J. Bohannon 1.680 acre tract (O.R. 394, Pg. 396), the Linda Kilgore 13.041 acre tract (O.R. 328, Pg. 650), the Christopher R. Starbuck 7.10 acre tract and 9.25 acre tract (O.R. 475, Pg. 782, Tract V and Tract II), N 4°-22'-00" E, a distance of 2570.70 feet to a 5/8 inch iron rod set at the TRUE POINT OF BEGINNING, passing a 5/8 inch iron rod found at 30.00 feet.

THENCE, with the east line of the said 9.25 acre tract and an east line of the Christopher R. Starbuck 147.09 acre tract (O.R. 475, Pg. 782, Tract I), N 4°-22'-00" E, a distance of 126.74 feet to a 5/8 inch iron rod set.


THENCE, with the south line of the said 147.09 acre tract, S 85°-31'-53" E, a distance of 137.46 feet to a 5/8 inch iron rod set.

THENCE, S 51°-44'-37" W, a distance of 186.81 feet to the point of beginning.

Containing 0.200 acre.

The basis for bearings is the south line of Section 11, being N 85°-38'-00" W, and all other bearings are from angles and distances measured in a field survey by Lee Surveying and Mapping Co., Inc. on October 4, 2002.

Description prepared by:

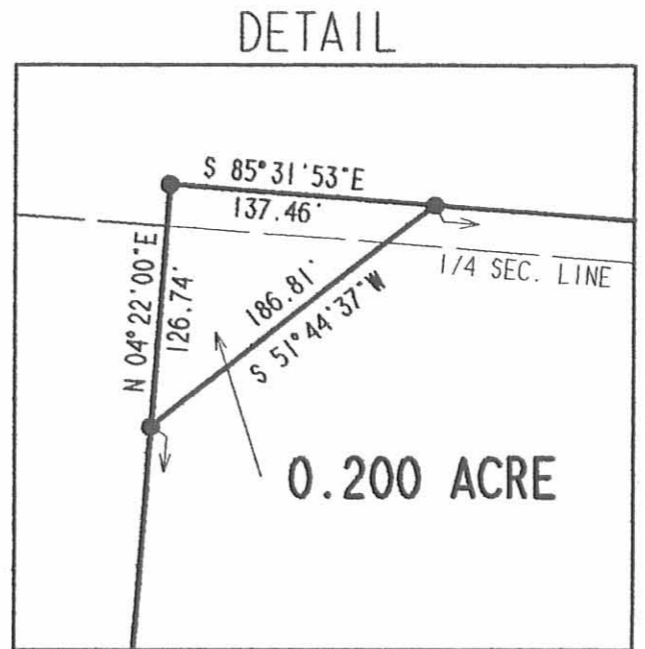
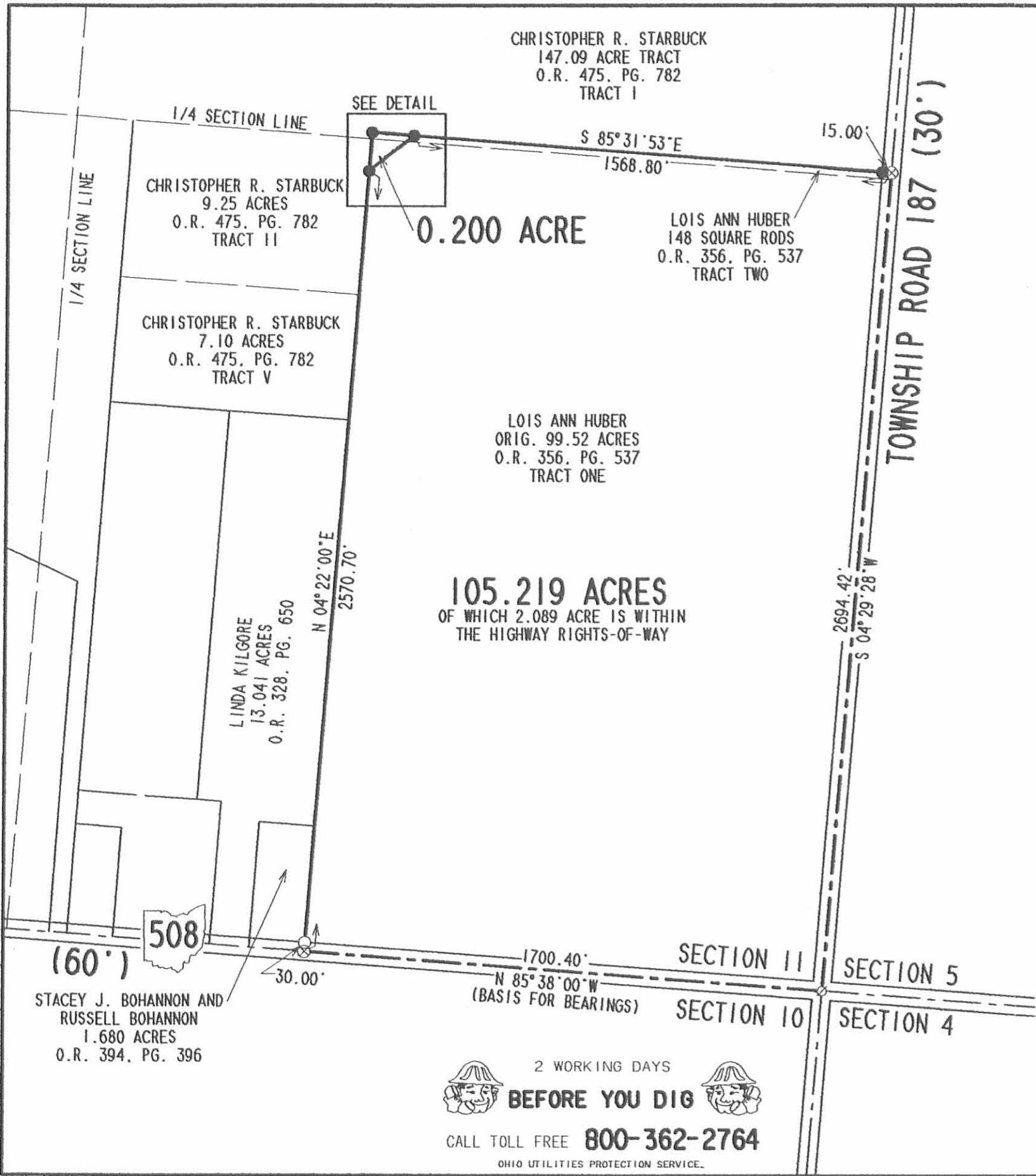

Jeffrey I. Lee
Professional Surveyor 6359
October 12, 2002



L-3449

ORIGINAL STAMP IN GREEN

INDEXED ON MAP
9419 1D2



SCALE
400

FEET TO AN INCH

LEGEND

- 5/8 INCH IRON ROD SET
- 5/8 INCH IRON ROD FOUND
- ⊗ P.K. NAIL FOUND
- ⊗ RAILROAD SPIKE FOUND

SURVEY OF TWO TRACTS OUT OF THE
LOIS ANN HUBER ORIGINAL 99.52 ACRE TRACT
AND 148 SQUARE RODS TRACT
OFFICIAL RECORD 356, PAGE 537
TRACT ONE AND TRACT TWO
SECTION 11, TOWN 4, RANGE 13
UNION TOWNSHIP
LOGAN COUNTY, OHIO



SURVEYED BY:

Jeffrey I. Lee

JEFFREY I. LEE
PROFESSIONAL SURVEYOR 6359
OCTOBER 4, 2002

COPYRIGHT 2002 BY:
LEE SURVEYING & MAPPING CO., INC.
117 North Madriver Street
BELLEFONTAINE, OHIO 43311
(937) 593-7335

2 WORKING DAYS
BEFORE YOU DIG
CALL TOLL FREE **800-362-2764**
OHIO UTILITIES PROTECTION SERVICE.

INDEXED ON MAP
9419 1P

D 292 HUBER L-3449-3

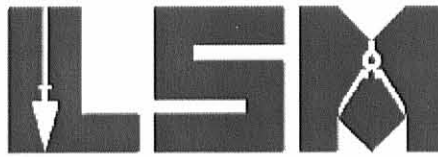
11/12 11/12 11/12 11/12

Lee Surveying and Mapping Co., Inc.



and Surveys • Topography • Subdivisions • Construction Layout

11/1/12
117 N. Madriver St.
Bellefontaine OH 43311



Phone: (937) 593-7335
Fax: (937) 593-7444
surveys@lsminc.us

LOIS H. HUBER LIVING TRUST 23.571 ACRES

Lying in Section 11, Town 4, Range 13, Union Township, Logan County, Ohio.

Being all of the Lois H. Huber Living Trust 0.200 acre tract and part of the 105.219 acre tract as deeded and described in Official Record 809, page 198 (Tracts One and Two) of the Logan County Records of Deeds and being more particularly described as follows:

Commencing at a P.K. nail found at the intersection of center-lines of Township Road 187 (30 feet wide) and Ohio Route 508 (60 feet wide) at the southeast corner of Section 11.

THENCE, with the center-line of Township Road 187, N 04°-29'-28"E, a distance of 1977.90 feet to a MAG nail set at the TRUE POINT OF BEGINNING.

THENCE, N 85°-52'-54"W, a distance of 898.00 feet to a 5/8 inch iron rod set, passing a 5/8 inch iron rod set at 15.00 feet.

THENCE, N 04°-10'-27"E, a distance of 165.95 feet to a 5/8 inch iron rod set.

THENCE, N 81°-59'-44"W, a distance of 303.97 feet to a 5/8 inch iron rod set.

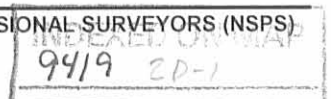
THENCE, N 66°-15'-41"W, a distance of 167.68 feet to a 5/8 inch iron rod set.

THENCE, N 63°-51'-02"W, a distance of 107.21 feet to a 5/8 inch iron rod set.

THENCE, N 50°-41'-41"W, a distance of 298.92 feet to a 5/8 inch iron rod set.

THENCE, with the east line of the Christopher R. Starbuck 9.25 acre tract (O.R. 1001, Pg. 654, Tract II), N 04°-21'-55"E, a distance of 271.62 feet to a 5/8 inch iron rod found, passing a 5/8 inch iron rod found at 144.88 feet.

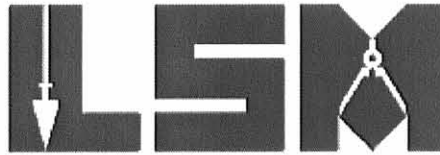
THENCE, with the south line of the Christopher R. Starbuck 147.09 acre tract (O.R. 1001, Pg. 654, Tract I) S 85°-31'-53"E, a distance of 1706.26 feet to a railroad spike found, passing a 5/8 inch iron rod found at 137.46 feet and a 5/8 inch iron rod set at 1691.26 feet.



Lee Surveying and Mapping Co., Inc.

Land Surveys • Topography • Subdivisions • Construction Layout

117 N. Madriver St.
Bellefontaine OH 43311



Phone: (937) 593-7335
Fax: (937) 593-7444
surveys@lsminc.us

THENCE, with the center-line of Township Road 187, S 04°-29'-28"W, a distance of 716.52 feet to the point of beginning.

Containing 23.571 acres of which 0.247 acre is within the highway right-of-way.

Property is subject to any and all previous easements and rights-of-way of record.

The basis for bearings is the center-line of Township Road 187, being S 04°-29'-27"W, and all other bearings are from angles and distances measured in a field survey by Lee Surveying and Mapping Co., Inc. on October 26, 2012.



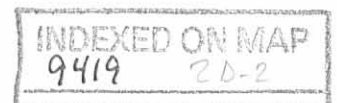
ORIGINAL STAMP IN GREEN

Description prepared by:

A handwritten signature in black ink that reads 'William K. Bruce'.

William K. Bruce
Professional Surveyor 7437
October 26, 2012

L-3449



CHRISTOPHER R. STARBUCK
147.09 ACRE TRACT
O.R. 1001, PG. 654
TRACT I

CHRISTOPHER R. STARBUCK
9.25 ACRE TRACT
O.R. 1001, PG. 654
TRACT II

LOIS H. HUBER LIVING TRUST
0.200 ACRE TRACT
O.R. 809, PG. 198
TRACT ONE

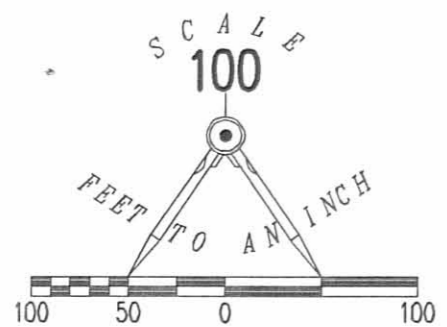
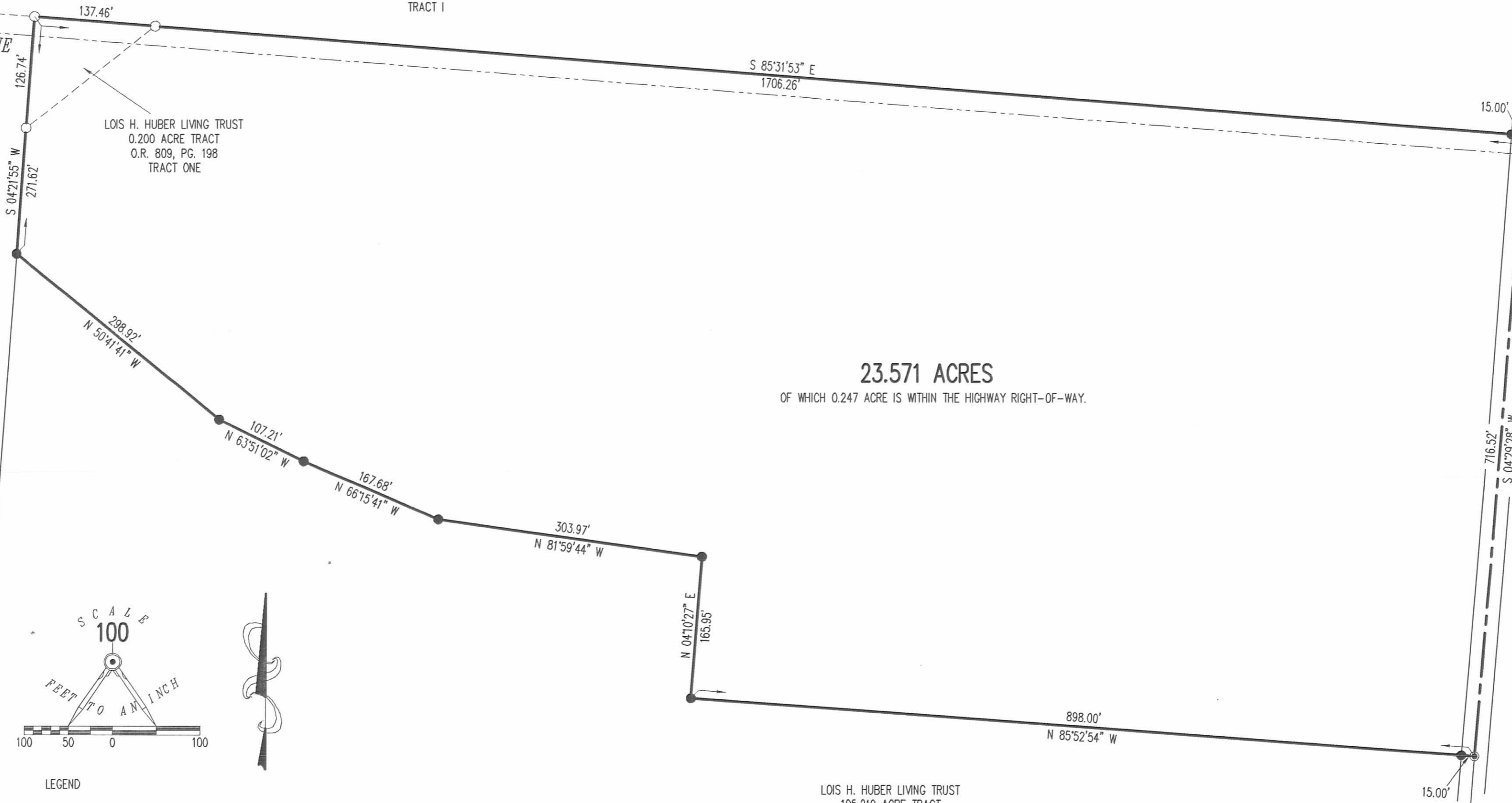
23.571 ACRES

OF WHICH 0.247 ACRE IS WITHIN THE HIGHWAY RIGHT-OF-WAY.

LOIS H. HUBER LIVING TRUST
105.219 ACRE TRACT
O.R. 809, PG. 198
TRACT TWO

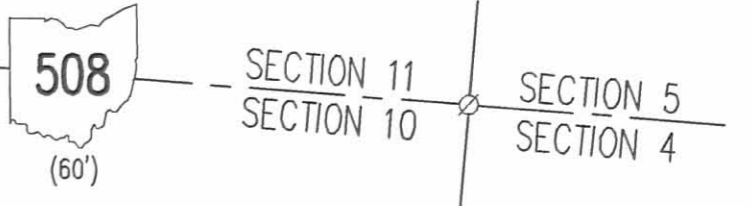
TOWNSHIP ROAD 187 (30')

1/4 SECTION LINE



- LEGEND
- 5/8 INCH IRON ROD SET WITH A PLASTIC I.D. CAP STAMPED "LSM7437"
 - 5/8 INCH IRON ROD FOUND
 - ⊙ MAG NAIL SET
 - ⊗ RAILROAD SPIKE FOUND
 - ⊘ P.K. NAIL FOUND

A SURVEY OF A 23.571 ACRE TRACT OUT OF THE
LOIS H. HUBER LIVING TRUST
ALL OF A 0.200 ACRE TRACT AND
PART OF A 105.219 ACRE TRACT
OFFICIAL RECORD 809, PAGE 198
TRACT ONE AND TWO
SECTION 11, TOWN 4, RANGE 13
UNION TOWNSHIP
LOGAN COUNTY, OHIO



SURVEYED BY:
William K. Bruce
WILLIAM K. BRUCE
PROFESSIONAL SURVEYOR 7437
OCTOBER 26, 2012



COPYRIGHT 2012 BY:
LEE SURVEYING & MAPPING CO., INC.
117 North Madriver Street
BELLEFONTAINE, OHIO 43111
(937) 593-7335
WWW.LSMINC.US
surveys@lsminc.us
ADW D1012 34491012 L-3449-2

2 WORKING DAYS
BEFORE YOU DIG
CALL TOLL FREE 800-362-2764
OHIO UTILITIES PROTECTION SERVICE

INDEXED ON MAP
9419 2P