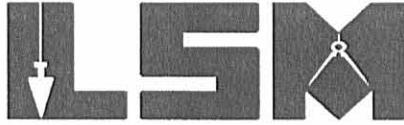


REC'D 8-10-05 SMMAL

# Lee Surveying and Mapping Co., Inc.

Land Surveys • Topography • Subdivisions • Construction Layout

117 N. Madriver St.  
Bellefontaine OH 43311



Phone: (937) 593-7335  
Fax: (937) 593-7444

**1975 - 2005 - 30 YEARS OF EXCELLENCE**

## HUNT INGRESS/ EGRESS EASEMENT

Lying in Section 1, Town 3, Range 14, Union Township, Logan County, Ohio.

Being out of the Kay V. Hunt and Phyllis E. Hunt original 31.6 acre tract as deeded and described in Official Record 741, Page 444 and being more particularly described as follows:

Beginning at a stone found inside a monument box at the intersection of center-lines of Township Road 186 (30 feet wide) and County Highway 32 (60 feet wide).

THENCE, with the center-line of County Highway 32, N 4°-27'-43"E, a distance of 1002.16 feet to a MAG nail set at the TRUE POINT OF BEGINNING.

THENCE, N 85°-39'-05"W, a distance of 56.35 feet to a point, passing a 5/8 inch iron rod set at 30.00 feet.

THENCE, N 35°-27'-51"E, a distance of 109.41 feet to a point in the center-line of County Highway 32.

THENCE, with the center-line of County Highway 32, S 4°-27'-43"W, a distance of 93.67 feet to the point of beginning.

The basis for bearings is the center-line of Township Road 186, being N 86°-00'-00"W, and all other bearings are from angles and distances measured in a field survey by Lee Surveying and Mapping Co., Inc. on August 2, 2005.



ORIGINAL STAMP IN GREEN

Description prepared by:

*[Signature]*  
Jeffrey I. Lee  
Professional Surveyor 6359  
August 2, 2005

L-4037065A

INDEXED ON MAP  
9515 101

REC'D 8-10-05 8M OK  
**Lee Surveying and Mapping Co., Inc.**

Land Surveys • Topography • Subdivisions • Construction Layout

117 N. Madriver St.  
Bellefontaine OH 43311



Phone: (937) 593-7335  
Fax: (937) 593-7444

**1975 - 2005 - 30 YEARS OF EXCELLENCE**

**HUNT  
TRACT A  
1.200 ACRES**

Lying in Section 1, Town 3, Range 14, Union Township, Logan County, Ohio.

Being out of the Kay V. Hunt and Phyllis E. Hunt original 31.6 acre tract as deeded and described in Official Record 741, Page 444 and being more particularly described as follows:

Beginning at a stone found inside a monument box at the intersection of center-lines of Township Road 186 (30 feet wide) and County Highway 32 (60 feet wide).

THENCE, with the center-line of Township Road 186, N 86°-00'-00"W, a distance of 180.00 feet to a MAG nail set.

THENCE, N 4°-27'-43"E, a distance of 290.40 feet to a 5/8 inch iron rod set, passing a 5/8 inch iron rod set at 20.00 feet.

THENCE, S 86°-00'-00"E, a distance of 180.00 feet to a MAG nail set, passing a 5/8 inch iron rod set at 150.00 feet.

THENCE, with the center-line of County Highway 32, S 4°-27'-43"W, a distance of 290.40 feet to the point of beginning.

Containing 1.200 acres of which 0.252 acre is within the highway right-of-way.

The basis for bearings is the center-line of Township Road 186, being N 86°-00'-00"W, and all other bearings are from angles and distances measured in a field survey by Lee Surveying and Mapping Co., Inc. on August 2, 2005.



ORIGINAL STAMP IN GREEN

Description prepared by:

A handwritten signature in black ink, appearing to read 'Jeffrey I. Lee'.

Jeffrey I. Lee  
Professional Surveyor 6359  
August 2, 2005

L-4037065

INDEXED ON MAP  
9515 102

REC'D 8-10-05 SML/OK  
**Lee Surveying and Mapping Co., Inc.**

Land Surveys • Topography • Subdivisions • Construction Layout

117 N. Madriver St.  
Bellefontaine OH 43311



Phone: (937) 593-7335  
Fax: (937) 593-7444

**1975 - 2005 - 30 YEARS OF EXCELLENCE**

**HUNT  
TRACT B  
1.000 ACRE**

Lying in Section 1, Town 3, Range 14, Union Township, Logan County, Ohio.

Being out of the Kay V. Hunt and Phyllis E. Hunt original 31.6 acre tract as deeded and described in Official Record 741, Page 444 and being more particularly described as follows:

Beginning at a stone found inside a monument box at the intersection of center-lines of Township Road 186 (30 feet wide) and County Highway 32 (60 feet wide).

THENCE, with the center-line of Township Road 186, N 86°-00'-00"W, a distance 180.00 feet to a MAG nail set at THE TRUE POINT OF BEGINNING.

THENCE, with the center-line of Township Road 186, N 86°-00'-00"W, a distance of 150.00 feet to a MAG nail set.

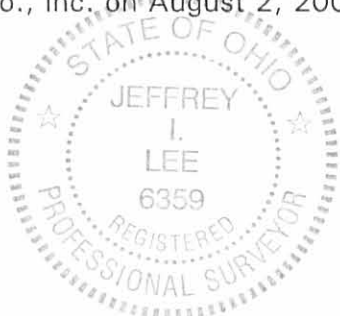
THENCE, N 4°-27'-43"E, a distance of 290.40 feet to a 5/8 inch iron rod set, passing a 5/8 inch iron rod set at 20.00 feet.

THENCE, S 86°-00'-00"E, a distance of 150.00 feet to a 5/8 inch iron rod set.

THENCE, S 4°-27'-43"W, a distance of 290.40 feet to the point of beginning, passing a 5/8 inch iron rod set at 270.40 feet.

Containing 1.000 acre of which 0.052 acre is within the highway right-of-way.

The basis for bearings is the center-line of Township Road 186, being N 86°-00'-00"W, and all other bearings are from angles and distances measured in a field survey by Lee Surveying and Mapping Co., Inc. on August 2, 2005.



ORIGINAL STAMP IN GREEN

Description prepared by:

A handwritten signature in black ink, appearing to read 'J. Lee'.  
Jeffrey I. Lee  
Professional Surveyor 6359  
August 2, 2005

L-4037065

INDEXED ON MAP  
95151D3

REC'D 8-10-05 SMM ok  
**Lee Surveying and Mapping Co., Inc.**

Land Surveys • Topography • Subdivisions • Construction Layout

117 N. Madriver St.  
Bellefontaine OH 43311



Phone: (937) 593-7335  
Fax: (937) 593-7444

**1975 - 2005 - 30 YEARS OF EXCELLENCE**

**HUNT  
TRACT C  
1.000 ACRE**

Lying in Section 1, Town 3, Range 14, Union Township, Logan County, Ohio.

Being out of the Kay V. Hunt and Phyllis E. Hunt original 31.6 acre tract as deeded and described in Official Record 741, Page 444 and being more particularly described as follows:

Beginning at a stone found inside a monument box at the intersection of center-lines of Township Road 186 (30 feet wide) and County Highway 32 (60 feet wide).

THENCE, with the center-line of Township Road 186, N 86°-00'-00"W, a distance 330.00 feet to a MAG nail set at THE TRUE POINT OF BEGINNING.

THENCE, with the center-line of Township Road 186, N 86°-00'-00"W, a distance of 150.00 feet to a MAG nail set.

THENCE, N 4°-27'-43"E, a distance of 290.40 feet to a 5/8 inch iron rod set, passing a 5/8 inch iron rod set at 20.00 feet.

THENCE, S 86°-00'-00"E, a distance of 150.00 feet to a 5/8 inch iron rod set.

THENCE, S 4°-27'-43"W, a distance of 290.40 feet to the point of beginning, passing a 5/8 inch iron rod set at 270.40 feet.

Containing 1.000 acre of which 0.052 acre is within the highway right-of-way.

The basis for bearings is the center-line of Township Road 186, being N 86°-00'-00"W, and all other bearings are from angles and distances measured in a field survey by Lee Surveying and Mapping Co., Inc. on August 2, 2005.



ORIGINAL STAMP IN GREEN

Description prepared by:

A handwritten signature in black ink, appearing to read 'Jeffrey I. Lee'.  
Jeffrey I. Lee  
Professional Surveyor 6359  
August 2, 2005

L-4037065

INDEXED ON MAP  
95151D-4

REV'D 8-10-05 SJM OK  
**Lee Surveying and Mapping Co., Inc.**

Land Surveys • Topography • Subdivisions • Construction Layout

117 N. Madriver St.  
Bellefontaine OH 43311



Phone: (937) 593-7335  
Fax: (937) 593-7444

**1975 - 2005 - 30 YEARS OF EXCELLENCE**  
**HUNT**  
**TRACT D**  
**6.088 ACRES**

Lying in Section 1, Town 3, Range 14, Union Township, Logan County, Ohio.

Being out of the Kay V. Hunt and Phyllis E. Hunt original 31.6 acre tract as deeded and described in Official Record 741, Page 444 and being more particularly described as follows:

Beginning at a stone found inside a monument box at the intersection of center-lines of Township Road 186 (30 feet wide) and County Highway 32 (60 feet wide).

THENCE, with the center-line of Township Road 186, N 86°-00'-00"W, a distance 480.00 feet to a MAG nail set at THE TRUE POINT OF BEGINNING.

THENCE, with the center-line of Township Road 186, N 86°-00'-00"W, a distance of 267.38 feet to a MAG nail set.

THENCE, N 3°-53'-18"E, a distance of 320.40 feet to a 5/8 inch iron rod set, passing a 5/8 inch iron rod set at 20.00 feet.

THENCE, N 86°-00'-00"W, a distance of 267.38 feet to a 5/8 inch iron rod set.

THENCE, with the east line of the Herbert P. Inskip, Trustee under his declaration of trust dated Sept. 12, 1995, 47.918 acre tract (O.R. 275, Pg. 92 Tract I), N 3°-53'-18"E, a distance of 331.73 feet to a 5/8 inch iron rod set.

THENCE, S 86°-00'-00"E, a distance of 541.28 feet to a 5/8 inch iron rod set.

THENCE, S 4°-27'-43"W, a distance of 652.16 feet to the point of beginning, passing a 5/8 inch iron rods set at 180.88 feet, 361.76 feet and 632.16 feet.

Containing 6.088 acres of which 0.092 acre is within the highway right-of-way.

The basis for bearings is the center-line of Township Road 186, being N 86°-00'-00"W, and all other bearings are from angles and distances measured in a field survey by Lee Surveying and Mapping Co., Inc. on August 2, 2005



Description prepared by:

*Jeffrey I. Lee*  
Jeffrey I. Lee  
Professional Surveyor 6359  
August 2, 2005

L-403706

INDEXED ON MAP  
95151D-5

REV'D 8-10-05 SML/ALC

# Lee Surveying and Mapping Co., Inc.

Land Surveys • Topography • Subdivisions • Construction Layout

117 N. Madriver St.  
Bellefontaine OH 43311



Phone: (937) 593-7335  
Fax: (937) 593-7444

**1975 - 2005 - 30 YEARS OF EXCELLENCE**

## HUNT TRACT E 1.967 ACRE

Lying in Section 1, Town 3, Range 14, Union Township, Logan County, Ohio.

Being out of the Kay V. Hunt and Phyllis E. Hunt original 31.6 acre tract as deeded and described in Official Record 741, Page 444 and being more particularly described as follows:

Beginning at a stone found inside a monument box at the intersection of center-lines of Township Road 186 (30 feet wide) and County Highway 32 (60 feet wide).

THENCE, with the center-line of Township Road 186, N 86°-00'-00"W, a distance 747.38 feet to a MAG nail set at THE TRUE POINT OF BEGINNING.

THENCE, with the center-line of Township Road 186, N 86°-00'-00"W, a distance of 267.37 feet to a MAG nail set.

THENCE, with the east line of the Herbert P. Inskeep, Trustee under his declaration of trust dated Sept. 12, 1995, 47.918 acre tract (O.R. 275, Pg. 92 Tract I), N 3°-53'-18"E, a distance of 320.40 feet to a 5/8 inch iron rod set, passing a 5/8 inch iron rod set at 20.00 feet.

THENCE, S 86°-00'-00"E, a distance of 267.38 feet to a 5/8 inch iron rod set.

THENCE, S 3°-53'-18"W, a distance of 320.40 feet to the point of beginning, passing a 5/8 inch iron rod set at 300.40 feet.

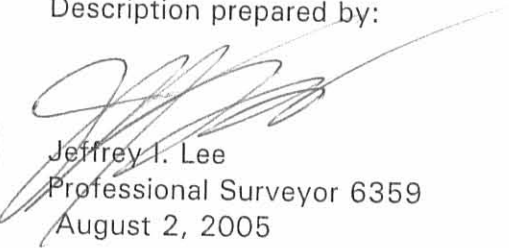
Containing 1.967 acres of which 0.092 acre is within the highway right-of-way.

The basis for bearings is the center-line of Township Road 186, being N 86°-00'-00"W, and all other bearings are from angles and distances measured in a field survey by Lee Surveying and Mapping Co., Inc. on August 2, 2005



ORIGINAL STAMP IN GREEN

Description prepared by:

  
Jeffrey I. Lee  
Professional Surveyor 6359  
August 2, 2005

L-403706

INDEXED ON MAP  
9515 1D-U



REC'D 8-10-05 SWM OK

# Lee Surveying and Mapping Co., Inc.

Land Surveys • Topography • Subdivisions • Construction Layout

117 N. Madriver St.  
Bellefontaine OH 43311



Phone: (937) 593-7335  
Fax: (937) 593-7444

**1975 - 2005 - 30 YEARS OF EXCELLENCE**  
**HUNT**  
**TRACT F**  
**1.993 ACRE**

Lying in Section 1, Town 3, Range 14, Union Township, Logan County, Ohio.

Being out of the Kay V. Hunt and Phyllis E. Hunt original 31.6 acre tract as deeded and described in Official Record 741, Page 444 and being more particularly described as follows:

Beginning at a stone found inside a monument box at the intersection of center-lines of Township Road 186 (30 feet wide) and County Highway 32 (60 feet wide).

THENCE, with the center-line of County Highway 32, N 4°-27'-43"E, a distance of 290.40 feet to a MAG nail set at THE TRUE POINT OF BEGINNING.

THENCE, N 86°-00'-00"W, a distance of 480.00 feet to a 5/8 inch iron rod set, passing 5/8 inch iron rods set at 30.00 feet, 180.00 feet and 330.00 feet.

THENCE, N 4°-27'-43"E, a distance of 180.88 feet to a 5/8 inch iron rod set.

THENCE, S 86°-00'-00"E, a distance of 480.00 feet to a MAG nail set, passing a 5/8 inch iron rod set at 450.00 feet.

THENCE, with the center-line of County Highway 32, S 4°-27'-43"W, a distance of 180.88 feet to the point of beginning.

Containing 1.993 acres of which 0.125 acre is within the highway right-of-way.

The basis for bearings is the center-line of Township Road 186, being N 86°-00'-00"W, and all other bearings are from angles and distances measured in a field survey by Lee Surveying and Mapping Co., Inc. on August 2, 2005

Description prepared by:



*Jeffrey I. Lee*  
Jeffrey I. Lee  
Professional Surveyor 6359  
August 2, 2005

L-403706

INDEXED ON MAP  
95151D7

REV'D 8-10-05 JML/AL

# Lee Surveying and Mapping Co., Inc.

Land Surveys • Topography • Subdivisions • Construction Layout

117 N. Madriver St.  
Bellefontaine OH 43311



Phone: (937) 593-7335  
Fax: (937) 593-7444

**1975 - 2005 - 30 YEARS OF EXCELLENCE**

**HUNT  
TRACT G  
1.993 ACRE**

Lying in Section 1, Town 3, Range 14, Union Township, Logan County, Ohio.

Being out of the Kay V. Hunt and Phyllis E. Hunt original 31.6 acre tract as deeded and described in Official Record 741, Page 444 and being more particularly described as follows:

Beginning at a stone found inside a monument box at the intersection of center-lines of Township Road 186 (30 feet wide) and County Highway 32 (60 feet wide).

THENCE, with the center-line of County Highway 32, N 4°-27'-43"E, a distance of 471.28 feet to a MAG nail set at THE TRUE POINT OF BEGINNING.

THENCE, N 86°-00'-00"W, a distance of 480.00 feet to a 5/8 inch iron rod set, passing 5/8 an inch iron rod set at 30.00 feet.

THENCE, N 4°-27'-43"E, a distance of 180.88 feet to a 5/8 inch iron rod set.

THENCE, S 86°-00'-00"E, a distance of 480.00 feet to a MAG nail set, passing a 5/8 inch iron rod set at 450.00 feet.

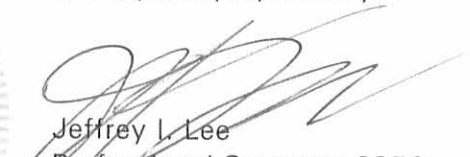
THENCE, with the center-line of County Highway 32, S 4°-27'-43"W, a distance of 180.88 feet to the point of beginning.

Containing 1.993 acres of which 0.125 acre is within the highway right-of-way.

The basis for bearings is the center-line of Township Road 186, being N 86°-00'-00"W, and all other bearings are from angles and distances measured in a field survey by Lee Surveying and Mapping Co., Inc. on August 2, 2005

Description prepared by:



  
Jeffrey I. Lee  
Professional Surveyor 6359  
August 2, 2005

L-403706

INDEXED ON MAP  
9515 1D-8



REC'D 8-10-05 SMY/ok  
**Lee Surveying and Mapping Co., Inc.**

Land Surveys • Topography • Subdivisions • Construction Layout

117 N. Madriver St.  
Bellefontaine OH 43311



Phone: (937) 593-7335  
Fax: (937) 593-7444

**1975 - 2005 - 30 YEARS OF EXCELLENCE**

**HUNT  
TRACT H  
7.293 ACRE**

Lying in Section 1, Town 3, Range 14, Union Township, Logan County, Ohio.

Being out of the Kay V. Hunt and Phyllis E. Hunt original 31.6 acre tract as deeded and described in Official Record 741, Page 444 and being more particularly described as follows:

Beginning at a stone found inside a monument box at the intersection of center-lines of Township Road 186 (30 feet wide) and County Highway 32 (60 feet wide).

THENCE, with the center-line of County Highway 32, N 4°-27'-43"E, a distance of 652.16 feet to a MAG nail set at THE TRUE POINT OF BEGINNING.

THENCE, N 86°-00'-00"W, a distance of 1021.28 feet to a 5/8 inch iron rod set, passing 5/8 inch iron rods set at 30.00 feet and 480.00 feet.

THENCE, with the east line of the Herbert P. Inskip, Trustee under his declaration of trust dated Sept. 12, 1995, 47.918 acre tract (O.R. 275, Pg. 92, Tract I), N 3°-53'-18"E, a distance of 356.22 feet to a 5/8 inch iron rod set.

THENCE, S 85°-39'-05"E, a distance of 734.42 feet to a 5/8 inch iron rod set.

THENCE, S 4°-27'-43"W, a distance of 150.00 feet to a 5/8 inch iron rod set.

THENCE, S 85°-39'-05"E, a distance of 290.40 feet to a MAG nail set, passing a 5/8 inch iron rod set at 260.40 feet.

THENCE, with the center-line of County Highway 32, S 4°-27'-43"W, a distance of 200.00 feet to the point of beginning.

Containing 7.293 acres of which 0.138 acre is within the highway right-of-way.

The basis for bearings is the center-line of Township Road 186, being N 86°-00'-00"W, and all other bearings are from angles and distances measured in a field survey by Lee Surveying and Mapping Co., Inc. on August 2, 2005.



ORIGINAL STAMP IN GREEN

Description prepared by:

Jeffrey I. Lee  
Professional Surveyor 6359  
August 2, 2005

L-403706

INDEXED ON MAP  
9515 1D-9

REC'D 8-10-05 SVM OK  
**Lee Surveying and Mapping Co., Inc.**

Land Surveys • Topography • Subdivisions • Construction Layout

117 N. Madriver St.  
Bellefontaine OH 43311



Phone: (937) 593-7335  
Fax: (937) 593-7444

**1975 - 2005 - 30 YEARS OF EXCELLENCE**

**HUNT  
TRACT J  
1.000 ACRE**

Lying in Section 1, Town 3, Range 14, Union Township, Logan County, Ohio.

Being out of the Kay V. Hunt and Phyllis E. Hunt original 31.6 acre tract as deeded and described in Official Record 741, Page 444 and being more particularly described as follows:

Beginning at a stone found inside a monument box at the intersection of center-lines of Township Road 186 (30 feet wide) and County Highway 32 (60 feet wide).

THENCE, with the center-line of County Highway 32, N 4°-27'-43"E, a distance of 852.16 feet to a MAG nail set at THE TRUE POINT OF BEGINNING.

THENCE, N 85°-39'-05"W, a distance of 290.40 feet to a 5/8 inch iron rod set, passing a 5/8 inch iron rod set at 30.00 feet.

THENCE, N 4°-27'-43"E, a distance of 150.00 feet to a 5/8 inch iron rod set.

THENCE, S 85°-39'-05"E, a distance of 290.40 feet to a MAG nail set, passing a 5/8 inch iron rod set at 260.40 feet.

THENCE, with the center-line of County Highway 32, S 4°-27'-43"W, a distance of 150.00 feet to the point of beginning.

Containing 1.000 acre of which 0.103 acre is within the highway right-of-way.

The basis for bearings is the center-line of Township Road 186, being N 86°-00'-00"W, and all other bearings are from angles and distances measured in a field survey by Lee Surveying and Mapping Co., Inc. on August 2, 2005.

Description prepared by:



*Jeffrey I. Lee*  
Jeffrey I. Lee  
Professional Surveyor 6359  
August 2, 2005

L-4037065

INDEXED ON MAP  
9515 10-10

REC'D 8-11-05 SUMAK

# Lee Surveying and Mapping Co., Inc.

Land Surveys • Topography • Subdivisions • Construction Layout

117 N. Madriver St.  
Bellefontaine OH 43311



Phone: (937) 593-7335  
Fax: (937) 593-7444

**1975 - 2005 - 30 YEARS OF EXCELLENCE**

**HUNT  
TRACT K  
8.083 ACRE**

Lying in Section 1, Town 3, Range 14, Union Township, Logan County, Ohio.

Being out of the Kay V. Hunt and Phyllis E. Hunt original 31.6 acre tract as deeded and described in Official Record 741, Page 444 and being more particularly described as follows:

Beginning at a stone found inside a monument box at the intersection of center-lines of Township Road 186 (30 feet wide) and County Highway 32 (60 feet wide).

THENCE, with the center-line of County Highway 32, N 4°-27'-43"E, a distance of 1002.16 feet to a MAG nail set at THE TRUE POINT OF BEGINNING.

THENCE, N 85°-39'-05"W, a distance of 1024.82 feet to a 5/8 inch iron rod set, passing a 5/8 inch iron rods set at 30.00 feet and 290.40 feet.

THENCE, with the east line of Herbert P. Inskeep, Trustee under his declaration of trust dated Sept. 12, 1995, 47.918 acre tract (O.R. 275, Pg. 92 Tract I), N 3°-53'-18"E, a distance of 343.01 feet to a 5/8 inch iron rod set.

THENCE, with the south line of the Judith E. Heading, Kenneth D. Heading and Kathryn G. H. Fulk 42.799 acre tract (O.R. 766, Pg. 797) and with the south line of the Arthur F. Mast 1.000 acre tract (O.R. 73, Pg. 163 Tract IV), S 85°-39'-05"E, a distance of 1028.25 feet to a MAG nail set, passing a 1 inch iron bar found at 998.25 feet.

THENCE, with the center-line of County Highway 32, S 4°-27'-43"W, a distance of 343.00 feet to the point of beginning.

Containing 8.083 acres of which 0.236 acre is within the highway right-of-way.

The basis for bearings is the center-line of Township Road 186, being N 86°-00'-00"W, and all other bearings are from angles and distances measured in a field survey by Lee Surveying and Mapping Co., Inc. on August 2, 2005

Description prepared by:



ORIGINAL STAMP IN GREEN

*Jeffrey I. Lee*  
Jeffrey I. Lee  
Professional Surveyor 6359  
August 2, 2005

L-4037065

INDEXED ON MAP  
9.5.15 D-11

JUDITH E. HEADING, KENNETH D. HEADING AND KATHRYN G. H. FULK  
42.799 ACRE TRACT  
O.R. 766, PG. 797

ARTHUR F. MAST  
1.00 ACRE TRACT  
O.R. 73, PG. 163  
TRACT IV

HERBERT P. INSKIP, TRUSTEE UNDER HIS  
DECLARATION OF TRUST DATED SEPT. 12, 1995  
47.918 ACRE TRACT  
O.R. 275, PG. 92  
TRACT I

TRACT K  
8.083 ACRES  
OF WHICH 0.236 ACRE IS WITHIN  
THE HIGHWAY RIGHT-OF-WAY

TRACT H  
7.293 ACRES  
OF WHICH 0.138 ACRE IS WITHIN  
THE HIGHWAY RIGHT-OF-WAY

KAY V. HUNT AND PHYLLIS E. HUNT  
ORIGINAL 31.6 ACRE TRACT  
O.R. 741, PG. 444

TRACT D  
6.088 ACRES  
OF WHICH 0.092 ACRE IS WITHIN  
THE HIGHWAY RIGHT-OF-WAY

TRACT E  
1.967 ACRES  
OF WHICH 0.092 ACRE IS WITHIN  
THE HIGHWAY RIGHT-OF-WAY

TRACT C  
1.000 ACRE  
OF WHICH 0.052 ACRE IS WITHIN  
THE HIGHWAY RIGHT-OF-WAY

TRACT F  
1.993 ACRES  
OF WHICH 0.125 ACRE IS WITHIN  
THE HIGHWAY RIGHT-OF-WAY

TRACT B  
1.000 ACRE  
OF WHICH 0.052 ACRE IS WITHIN  
THE HIGHWAY RIGHT-OF-WAY

TRACT A  
1.200 ACRE  
OF WHICH 0.252 ACRE IS WITHIN  
THE HIGHWAY RIGHT-OF-WAY

TRACT G  
1.993 ACRES  
OF WHICH 0.125 ACRE IS WITHIN  
THE HIGHWAY RIGHT-OF-WAY

TRACT J  
1.000 ACRE  
OF WHICH 0.103 ACRE IS WITHIN  
THE HIGHWAY RIGHT-OF-WAY

SCALE  
100



LEGEND

- 5/8 INCH IRON ROD SET
- ⊙ MAG NAIL SET
- 1 INCH IRON BAR FOUND
- ☒ STONE FOUND INSIDE MONUMENT BOX

INGRESS/EGRESS EASEMENT

COUNTY HIGHWAY 32 (60 FEET WIDE)

TOWNSHIP ROAD 186 (30 FEET WIDE)

A SURVEY OF AN INGRESS/EGRESS EASEMENT  
AND 10 TRACTS OUT OF THE  
KAY V. HUNT AND PHYLLIS E. HUNT  
ORIGINAL 31.6 ACRE TRACT  
OFFICIAL RECORD 741, PAGE 444  
SECTION 1, TOWN 3, RANGE 14  
UNION TOWNSHIP  
LOGAN COUNTY, OHIO

SURVEYED BY:



JEFFREY I. LEE  
PROFESSIONAL SURVEYOR 6359  
AUGUST 2, 2005

COPYRIGHT 2005 BY:  
LEE SURVEYING & MAPPING CO., INC.  
117 North Madriver Street  
BELLEFONTAINE, OHIO 43311  
(937) 593-7335

2 WORKING DAYS  
BEFORE YOU DIG  
CALL TOLL FREE 800-362-2764  
OHIO UTILITIES PROTECTION SERVICE.

INDEXED ON MAP  
9515 IP

ORIGINAL STAMP IN GREEN

ADW D0805 4037065 L-4037065-2



REC'D 8-31-05 SMM/OK

# Lee Surveying and Mapping Co., Inc.

Land Surveys • Topography • Subdivisions • Construction Layout

117 N. Madriver St.  
Bellefontaine OH 43311



Phone: (937) 593-7335  
Fax: (937) 593-7444

**1975 - 2005 - 30 YEARS OF EXCELLENCE**

**HUNT  
TRACT E  
2.074 ACRE**

Lying in Section 1, Town 3, Range 14, Union Township, Logan County, Ohio.

Being out of the Kay V. Hunt and Phyllis E. Hunt original 31.6 acre tract as deeded and described in Official Record 741, Page 444 and being more particularly described as follows:

Beginning at a stone found inside a monument box at the intersection of center-lines of Township Road 186 (30 feet wide) and County Highway 32 (60 feet wide).

THENCE, with the center-line of Township Road 186, N 86°-00'-00"W, a distance 732.75 feet to a MAG nail set at THE TRUE POINT OF BEGINNING.

THENCE, with the center-line of Township Road 186, N 86°-00'-00"W, a distance of 282.00 feet to a MAG nail set.

THENCE, with the east line of the Herbert P. Inskeep, Trustee under his declaration of trust dated Sept. 12, 1995, 47.918 acre tract (O.R. 275, Pg. 92 Tract I), N 3°-53'-18"E, a distance of 320.40 feet to a 5/8 inch iron rod set, passing a 5/8 inch iron rod set at 20.00 feet.

THENCE, S 86°-00'-00"E, a distance of 282.00 feet to a 5/8 inch iron rod set.

THENCE, S 3°-53'-18"W, a distance of 320.40 feet to the point of beginning, passing a 5/8 inch iron rod set at 300.40 feet.

Containing 2.074 acres of which 0.097 acre is within the highway right-of-way.

The basis for bearings is the center-line of Township Road 186, being N 86°-00'-00"W, and all other bearings are from angles and distances measured in a field survey by Lee Surveying and Mapping Co., Inc. on August 2, 2005



ORIGINAL STAMP IN GREEN

Description prepared by:

*Jeffrey I. Lee*  
Jeffrey I. Lee  
Professional Surveyor 6359  
August 2, 2005  
Revised August 25, 2005

L-4037065

INDEXED ON MAP  
9515 2D-1

REC'D 8-26-05 SJM OK

# Lee Surveying and Mapping Co., Inc.

Land Surveys • Topography • Subdivisions • Construction Layout

117 N. Madriver St.  
Bellefontaine OH 43311



Phone: (937) 593-7335  
Fax: (937) 593-7444

**1975 - 2005 - 30 YEARS OF EXCELLENCE**

**HUNT  
TRACT D  
5.981 ACRES**

Lying in Section 1, Town 3, Range 14, Union Township, Logan County, Ohio.

Being out of the Kay V. Hunt and Phyllis E. Hunt original 31.6 acre tract as deeded and described in Official Record 741, Page 444 and being more particularly described as follows:

Beginning at a stone found inside a monument box at the intersection of center-lines of Township Road 186 (30 feet wide) and County Highway 32 (60 feet wide).

THENCE, with the center-line of Township Road 186, N 86°-00'-00"W, a distance 480.00 feet to a MAG nail set at THE TRUE POINT OF BEGINNING.

THENCE, with the center-line of Township Road 186, N 86°-00'-00"W, a distance of 252.75 feet to a MAG nail set.

THENCE, N 3°-53'-18"E, a distance of 320.40 feet to a 5/8 inch iron rod set, passing a 5/8 inch iron rod set at 20.00 feet.

THENCE, N 86°-00'-00"W, a distance of 282.00 feet to a 5/8 inch iron rod set.

THENCE, with the east line of the Herbert P. Inskeep, Trustee under his declaration of trust dated Sept. 12, 1995, 47.918 acre tract (O.R. 275, Pg. 92 Tract I), N 3°-53'-18"E, a distance of 331.73 feet to a 5/8 inch iron rod set.

THENCE, S 86°-00'-00"E, a distance of 541.28 feet to a 5/8 inch iron rod set.

THENCE, S 4°-27'-43"W, a distance of 652.16 feet to the point of beginning, passing a 5/8 inch iron rods set at 180.88 feet, 361.76 feet and 632.16 feet.

Containing 5.981 acres of which 0.087 acre is within the highway right-of-way.

The basis for bearings is the center-line of Township Road 186, being N 86°-00'-00"W, and all other bearings are from angles and distances measured in a field survey by Lee Surveying and Mapping Co., Inc. on August 2, 2005

Description prepared by:



ORIGINAL STAMP IN GREEN

*Jeffrey I. Lee*  
Jeffrey I. Lee  
Professional Surveyor 6359  
August 2, 2005  
Revised August 25, 2005

L-403706

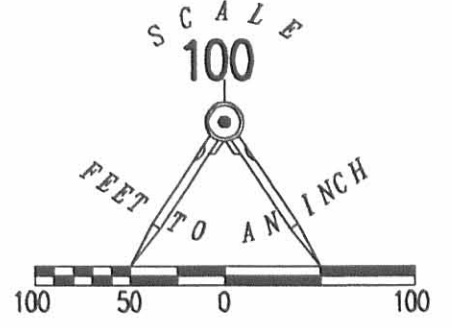
INDEXED ON MAP  
9515 2D-2



JUDITH E. HEADING, KENNETH D. HEADING AND KATHRYN G. H. FULK  
42.799 ACRE TRACT  
O.R. 766, PG. 797

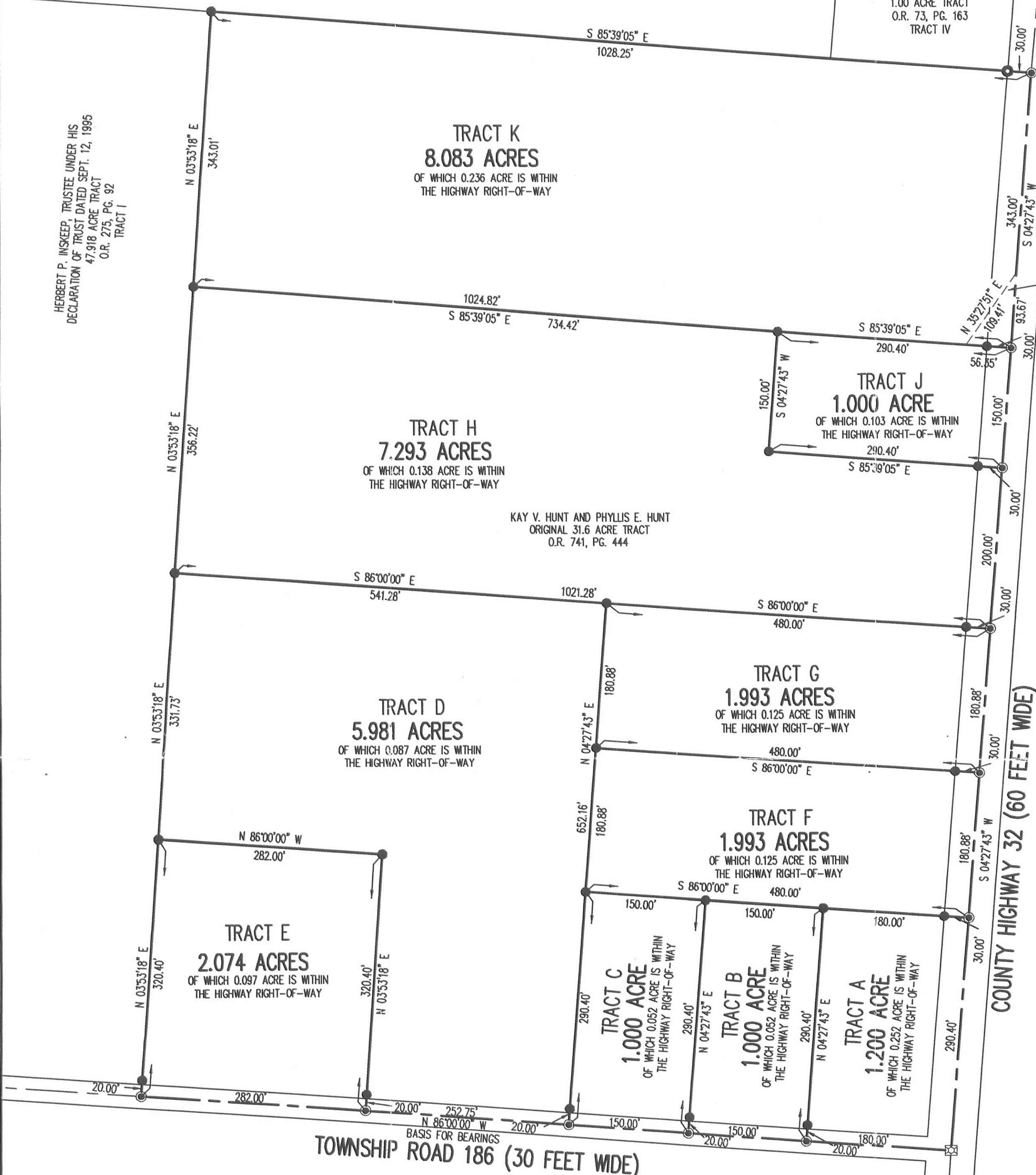
ARTHUR F. MAST  
1.00 ACRE TRACT  
O.R. 73, PG. 163  
TRACT IV

HERBERT P. INSKIP, TRUSTEE UNDER HIS  
DECLARATION OF TRUST DATED SEPT. 12, 1995  
47.918 ACRE TRACT  
O.R. 275, PG. 92  
TRACT I



- LEGEND
- 5/8 INCH IRON ROD SET
  - ⊙ MAG NAIL SET
  - ⊙ 1 INCH IRON BAR FOUND
  - ⊠ STONE FOUND INSIDE MONUMENT BOX

INGRESS/ EGRESS EASEMENT



COUNTY HIGHWAY 32 (60 FEET WIDE)

TOWNSHIP ROAD 186 (30 FEET WIDE)

A SURVEY OF AN INGRESS/EGRESS EASEMENT  
AND 10 TRACTS OUT OF THE  
KAY V. HUNT AND PHYLLIS E. HUNT  
ORIGINAL 31.6 ACRE TRACT  
OFFICIAL RECORD 741, PAGE 444  
SECTION 1, TOWN 3, RANGE 14  
UNION TOWNSHIP  
LOGAN COUNTY, OHIO

SURVEYED BY:



JEFFREY L. LEE  
PROFESSIONAL SURVEYOR 6359  
AUGUST 2, 2005  
REVISED AUGUST 25, 2005

COPYRIGHT 2005 BY:  
LEE SURVEYING & MAPPING CO., INC.  
117 North Madriver Street  
BELLEFONTAINE, OHIO 43311  
(937) 593-7335

2 WORKING DAYS  
**BEFORE YOU DIG**  
CALL TOLL FREE **800-362-2764**  
OHIO UTILITIES PROTECTION SERVICE

INDEXED ON MAP  
951528

REC'D 8-30-05 8M/A/C (legal same as TRACT E)

# Lee Surveying and Mapping Co., Inc.

Land Surveys • Topography • Subdivisions • Construction Layout

117 N. Madriver St.  
Bellefontaine OH 43311



Phone: (937) 593-7335  
Fax: (937) 593-7444

## 1975 - 2005 - 30 YEARS OF EXCELLENCE HUNT 2.074 ACRE

Lying in Section 1, Town 3, Range 14, Union Township, Logan County, Ohio.

Being out of the Kay V. Hunt and Phyllis E. Hunt original 31.6 acre tract as deeded and described in Official Record 741, Page 444 and being more particularly described as follows:

Beginning at a stone found inside a monument box at the intersection of center-lines of Township Road 186 (30 feet wide) and County Highway 32 (60 feet wide).

THENCE, with the center-line of Township Road 186, N 86°-00'-00"W, a distance 732.75 feet to a MAG nail set at THE TRUE POINT OF BEGINNING.

THENCE, with the center-line of Township Road 186, N 86°-00'-00"W, a distance of 282.00 feet to a MAG nail set.

THENCE, with the east line of the Herbert P. Inskeep, Trustee under his declaration of trust dated Sept. 12, 1995, 47.918 acre tract (O.R. 275, Pg. 92 Tract I), N 3°-53'-18"E, a distance of 320.40 feet to a 5/8 inch iron rod set, passing a 5/8 inch iron rod set at 20.00 feet.

THENCE, S 86°-00'-00"E, a distance of 282.00 feet to a 5/8 inch iron rod set.

THENCE, S 3°-53'-18"W, a distance of 320.40 feet to the point of beginning, passing a 5/8 inch iron rod set at 300.40 feet.


Containing 2.074 acres of which 0.097 acre is within the highway right-of-way.

The basis for bearings is the center-line of Township Road 186, being N 86°-00'-00"W, and all other bearings are from angles and distances measured in a field survey by Lee Surveying and Mapping Co., Inc. on August 2, 2005



ORIGINAL STAMP IN GREEN

Description prepared by:

  
Jeffrey I. Lee  
Professional Surveyor 6359  
August 2, 2005  
Revised August 25, 2005

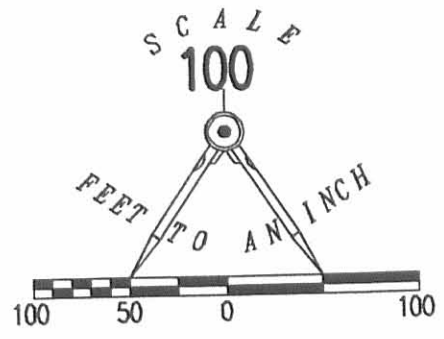
L-4037065A

INDEXED ON MAP  
9515 3D

REC'D 8-20-05 8M OK

JUDITH E. HEADING, KENNETH D. HEADING AND KATHRYN G. H. FULK  
42.799 ACRE TRACT  
O.R. 766, PG. 797

ARTHUR F. MAST  
1.00 ACRE TRACT  
O.R. 73, PG. 163  
TRACT IV



- LEGEND
- 5/8 INCH IRON ROD SET
  - ⊙ MAG NAIL SET
  - 1 INCH IRON BAR FOUND
  - ☒ STONE FOUND INSIDE MONUMENT BOX

HERBERT P. INSKIP, TRUSTEE UNDER HIS  
DECLARATION OF TRUST DATED SEPT. 12, 1995  
47.918 ACRE TRACT  
O.R. 275, PG. 92  
TRACT I

16.376 ACRES  
OF WHICH 0.477 ACRE IS WITHIN  
THE HIGHWAY RIGHT-OF-WAY

KAY V. HUNT AND PHYLLIS E. HUNT  
ORIGINAL 31.6 ACRE TRACT  
O.R. 741, PG. 444

5.981 ACRES  
OF WHICH 0.087 ACRE IS WITHIN  
THE HIGHWAY RIGHT-OF-WAY

7.186 ACRES  
OF WHICH 0.606 ACRE IS WITHIN  
THE HIGHWAY RIGHT-OF-WAY

2.074 ACRES  
OF WHICH 0.097 ACRE IS WITHIN  
THE HIGHWAY RIGHT-OF-WAY

COUNTY HIGHWAY 32 (60 FEET WIDE)

TOWNSHIP ROAD 186 (30 FEET WIDE)

A SURVEY OF  
4 TRACTS OUT OF THE  
KAY V. HUNT AND PHYLLIS E. HUNT  
ORIGINAL 31.6 ACRE TRACT  
OFFICIAL RECORD 741, PAGE 444  
SECTION 1, TOWN 3, RANGE 14  
UNION TOWNSHIP  
LOGAN COUNTY, OHIO  
SURVEYED BY:



JEFFREY L. LEE  
PROFESSIONAL SURVEYOR 6359  
AUGUST 2, 2005  
REVISED AUGUST 25, 2005

COPYRIGHT 2005 BY:  
LEE SURVEYING & MAPPING CO., INC.  
117 North Madriver Street  
BELLEFONTAINE, OHIO 43311  
(937) 593-7335

2 WORKING DAYS  
BEFORE YOU DIG  
CALL TOLL FREE 800-362-2764  
OHIO UTILITIES PROTECTION SERVICE

INDEXED ON MAP  
9515 3P

ADW D0805 4037065A L-4037065-2

REC'D 8-10-05 8M/OK  
**Lee Surveying and Mapping Co., Inc.**

Land Surveys • Topography • Subdivisions • Construction Layout

117 N. Madriver St.  
Bellefontaine OH 43311



Phone: (937) 593-7335  
Fax: (937) 593-7444

**1975 - 2005 - 30 YEARS OF EXCELLENCE**

**HUNT  
16.376 ACRE**

Lying in Section 1, Town 3, Range 14, Union Township, Logan County, Ohio.

Being out of the Kay V. Hunt and Phyllis E. Hunt original 31.6 acre tract as deeded and described in Official Record 741, Page 444 and being more particularly described as follows:

Beginning at a stone found inside a monument box at the intersection of center-lines of Township Road 186 (30 feet wide) and County Highway 32 (60 feet wide).

THENCE, with the center-line of County Highway 32, N 4°-27'-43"E, a distance of 652.16 feet to a MAG nail set at THE TRUE POINT OF BEGINNING.

THENCE, N 86°-00'-00"W, a distance of 1021.28 feet to a 5/8 inch iron rod set, passing a 5/8 inch iron rods set at 30.00 feet and 480.00 feet.

THENCE, with the east line of Herbert P. Inskeep, Trustee under his declaration of trust dated Sept. 12, 1995, 47.918 acre tract (O.R. 275, Pg. 92 Tract I), N 3°-53'-18"E, a distance of 699.23 feet to a 5/8 inch iron rod set.

THENCE, with the south line of the Judith E. Heading, Kenneth D. Heading and Kathryn G. H. Fulk 42.799 acre tract (O.R. 766, Pg. 797) and with the south line of the Arthur F. Mast 1.000 acre tract (O.R. 73, Pg. 163 Tract IV), S 85°-39'-05"E, a distance of 1028.25 feet to a MAG nail set, passing a 1 inch iron bar found at 998.25 feet.

THENCE, with the center-line of County Highway 32, S 4°-27'-43"W, a distance of 693.00 feet to the point of beginning.

Containing 16.376 acres of which 0.477 acre is within the highway right-of-way.

The basis for bearings is the center-line of Township Road 186, being N 86°-00'-00"W, and all other bearings are from angles and distances measured in a field survey by Lee Surveying and Mapping Co., Inc. on August 2, 2005



ORIGINAL STAMP IN GREEN

Description prepared by:

A handwritten signature in black ink, appearing to read 'Jeffrey I. Lee'.  
Jeffrey I. Lee  
Professional Surveyor 6359  
August 2, 2005

L-4037065A

INDEXED ON MAP  
9515 4D-1



REC'D 8-10-05 SML AK  
**Lee Surveying and Mapping Co., Inc.**

Land Surveys • Topography • Subdivisions • Construction Layout

117 N. Madriver St.  
Bellefontaine OH 43311



Phone: (937) 593-7335  
Fax: (937) 593-7444

**1975 - 2005 - 30 YEARS OF EXCELLENCE**

**HUNT  
7.186 ACRE**

Lying in Section 1, Town 3, Range 14, Union Township, Logan County, Ohio.

Being out of the Kay V. Hunt and Phyllis E. Hunt original 31.6 acre tract as deeded and described in Official Record 741, Page 444 and being more particularly described as follows:

Beginning at a stone found inside a monument box at the intersection of center-lines of Township Road 186 (30 feet wide) and County Highway 32 (60 feet wide).

THENCE, with the center-line of Township Road 186, N 86°-00'-00"W, a distance of 480.00 feet to a MAG nail set.

THENCE, N 4°-27'-43"E, a distance of 652.16 feet to a 5/8 inch iron rod set, passing a 5/8 inch iron rod set at 20.00 feet.


THENCE, S 86°-00'-00"E, a distance of 480.00 feet to a MAG nail set, passing a 5/8 inch iron rod set at 450.00 feet.

THENCE, with the center-line of County Highway 32, S 4°-27'-43"W, a distance of 652.16 feet to the point of beginning.

Containing 7.186 acres of which 0.606 acre is within the highway right-of-way.

The basis for bearings is the center-line of Township Road 186, being N 86°-00'-00"W, and all other bearings are from angles and distances measured in a field survey by Lee Surveying and Mapping Co., Inc. on August 2, 2005

Description prepared by:

  
Jeffrey I. Lee  
Professional Surveyor 6359  
August 2, 2005



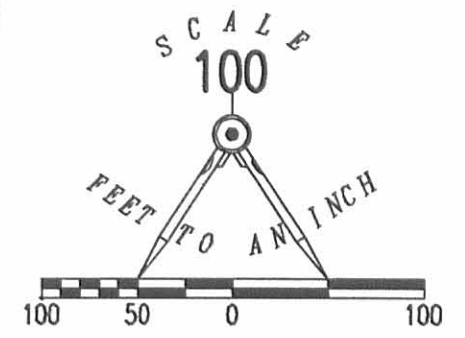
ORIGINAL STAMP IN GREEN

INDEXED ON MAP  
9515 4D2

REC'D 8-10-05 SJM/OK

JUDITH E. HEADING, KENNETH D. HEADING AND KATHRYN G. H. FULK  
42.799 ACRE TRACT  
O.R. 766, PG. 797

ARTHUR F. MAST  
1.00 ACRE TRACT  
O.R. 73, PG. 163  
TRACT IV



- LEGEND
- 5/8 INCH IRON ROD SET
  - ⊙ MAG NAIL SET
  - ⊙ 1 INCH IRON BAR FOUND
  - ⊠ STONE FOUND INSIDE MONUMENT BOX

HERBERT P. INSKIP, TRUSTEE UNDER HIS  
DECLARATION OF TRUST DATED SEPT. 12, 1995  
47.918 ACRE TRACT  
O.R. 275, PG. 92  
TRACT I

N 03°53'18" E  
699.23'

S 85°39'05" E  
1028.25'

16.376 ACRES  
OF WHICH 0.477 ACRE IS WITHIN  
THE HIGHWAY RIGHT-OF-WAY

KAY V. HUNT AND PHYLLIS E. HUNT  
ORIGINAL 31.6 ACRE TRACT  
O.R. 741, PG. 444

N 85°39'05" W  
693.00'  
S 04°27'43" W  
93.67'

INGRESS/EGRESS EASEMENT

S 86°00'00" E  
541.28'

1021.28'

S 86°00'00" E  
480.00'

6.088 ACRES  
OF WHICH 0.092 ACRE IS WITHIN  
THE HIGHWAY RIGHT-OF-WAY

N 03°53'18" E  
331.73'

N 03°53'18" E  
320.40'

1.967 ACRES  
OF WHICH 0.092 ACRE IS WITHIN  
THE HIGHWAY RIGHT-OF-WAY

267.38'  
N 86°00'00" W

N 03°53'18" E  
320.40'

N 04°27'43" E  
652.16'

7.186 ACRES  
OF WHICH 0.606 ACRE IS WITHIN  
THE HIGHWAY RIGHT-OF-WAY

COUNTY HIGHWAY 32 (60 FEET WIDE)

20.00'

267.38'

20.00'

267.38'

20.00'

480.00'

TOWNSHIP ROAD 186 (30 FEET WIDE)

BASIS FOR BEARINGS

A SURVEY OF  
4 TRACTS OUT OF THE  
KAY V. HUNT AND PHYLLIS E. HUNT  
ORIGINAL 31.6 ACRE TRACT  
OFFICIAL RECORD 741, PAGE 444  
SECTION 1, TOWN 3, RANGE 14  
UNION TOWNSHIP  
LOGAN COUNTY, OHIO

SURVEYED BY:

JEFFREY I. LEE  
PROFESSIONAL SURVEYOR 6359  
AUGUST 2, 2005



COPYRIGHT 2005 BY:  
LEE SURVEYING & MAPPING CO., INC.  
117 North Madriver Street  
BELLEFONTAINE, OHIO 43311  
(937) 593-7335

2 WORKING DAYS  
BEFORE YOU DIG  
CALL TOLL FREE 800-362-2764  
OHIO UTILITIES PROTECTION SERVICE.

INDEXED ON MAP  
9575 4P

ADW D0805 4037065A L-4037065-2



JON C. ANDERSON AND  
 ELIZABETH A. ANDERSON  
 7.293 ACRES  
 O.R. 1250, PG. 425

**DEED & SURVEY REFERENCES:**

O.R. 811, PG. 629  
 O.R. 811, PG. 640  
 O.R. 816, PG. 270  
 O.R. 1250, PG. 425

LOGAN COUNTY ENGINEER'S TAX  
 MAP FILES: 1933 AND 9515

KAY V. HUNT AND  
 PHYLLIS E. HUNT, TRUSTEES  
 5.981 ACRES  
 O.R. 811, PG. 640

**BASIS FOR BEARINGS:**

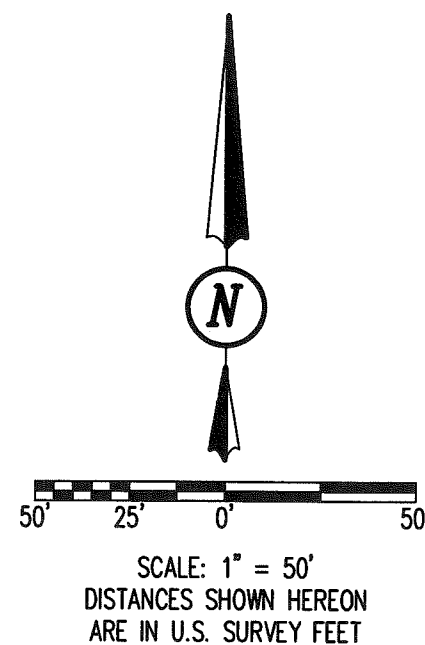
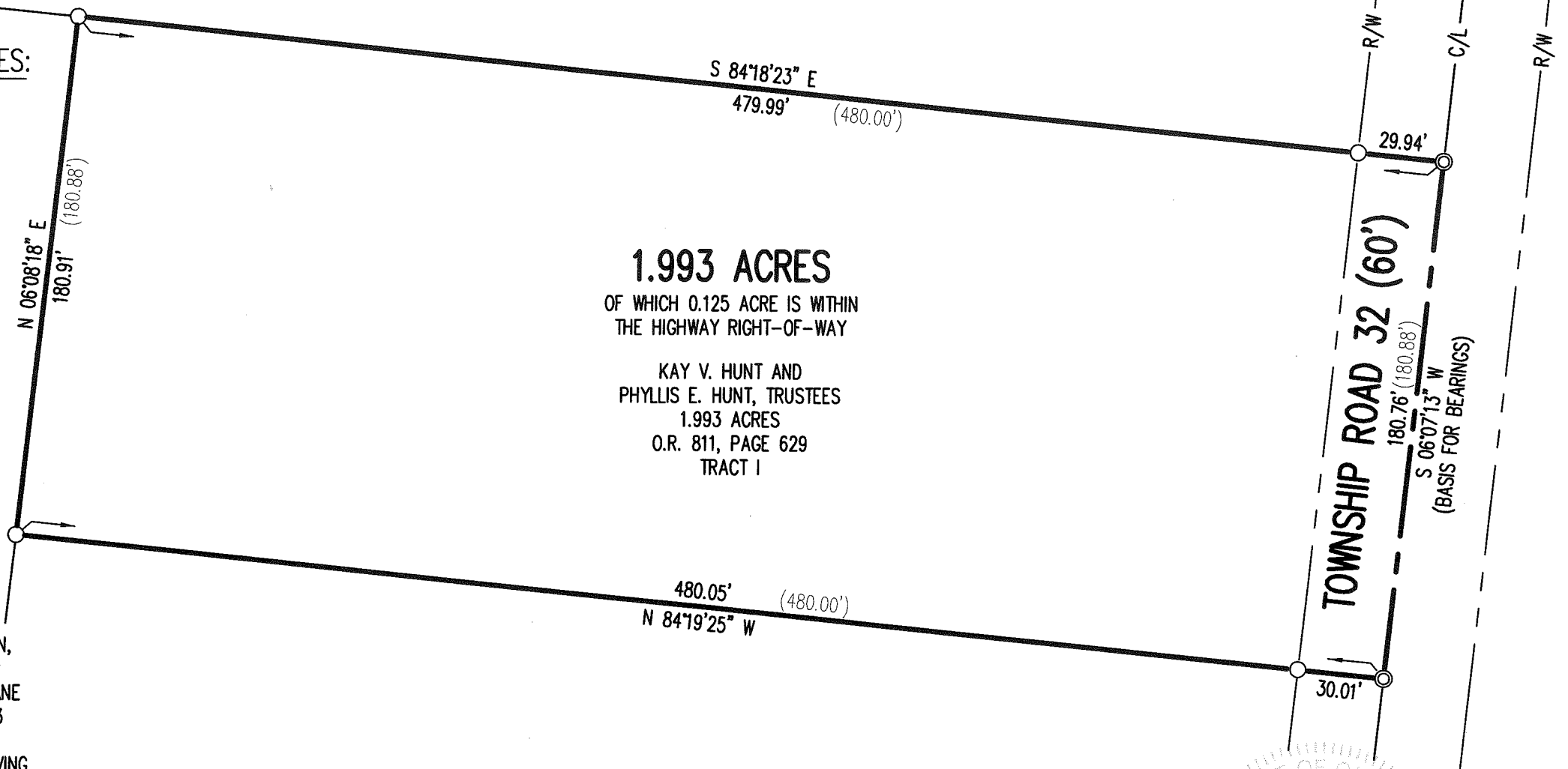
BEARINGS AND DISTANCES, SHOWN HEREON,  
 ARE DERIVED FROM GPS OBSERVATIONS  
 BASED ON GRID NORTH, OHIO STATE PLANE  
 COORDINATE SYSTEM, NORTH ZONE, NAD83  
 (2011, EPOCH 2010), WITH THE  
 CENTER-LINE OF TOWNSHIP ROAD 32, HAVING  
 A BEARING OF S 06°07'13" W.

THIS SURVEY WAS PREPARED IN THE  
 ABSENCE OF A COMPLETE AND ACCURATE  
 TITLE SEARCH AND DOES NOT GUARANTEE  
 TITLE.

**1.993 ACRES**  
 OF WHICH 0.125 ACRE IS WITHIN  
 THE HIGHWAY RIGHT-OF-WAY

KAY V. HUNT AND  
 PHYLLIS E. HUNT, TRUSTEES  
 1.993 ACRES  
 O.R. 811, PAGE 629  
 TRACT I

TIMOTHY J. KERNS AND  
 ELIZABETH A. KERNS  
 1.993 ACRES (TRACT F)  
 O.R. 816, PG. 270



*D. Neer*  
 DANIEL A. NEER  
 PROFESSIONAL SURVEYOR NO. 8533  
 JULY 12, 2019

COPYRIGHT 2019 BY:  
**DLZ**  
 117 N. Madriver Street • Bellefontaine, OH 43311  
 (937) 593-7335 • www.dlz.com  
 Project #1921-2042.00

LEGEND	
◎ MAG NAIL FOUND	(RECORD DISTANCE)
○ 5/8 INCH IRON ROD FOUND	
R/W = RIGHT-OF-WAY	
C/L = CENTER-LINE	

**RETRACEMENT SURVEY**  
 SECTION 1, TOWN 3, RANGE 14  
 BETWEEN THE MIAMI RIVERS SURVEY  
 UNION TOWNSHIP  
 LOGAN COUNTY, OHIO

DRAWN BY:	DESCRIPTION	REV. NO.	DATE
KSS			7/18/2019

INDEXED ON MAP  
 9515