

Lee Surveying and Mapping Co., Inc.

Land Surveys • Topography • Subdivisions • Construction Layout

117 N. Madriver St.
Bellefontaine OH 43311



Phone: (937) 593-7335
Fax: (937) 593-7444

1975 - 2005 - 30 YEARS OF EXCELLENCE

DEER HAVEN FARMS, INC.

4.000 ACRES

Lying in Section 25, Town 3, Range 14, Union Township, Logan County Ohio.

Being part of the Deer Haven Farms, Inc. 30 acre tract as deeded and described in Volume 407, Page 921, Tract II of the Logan County Records of Deeds and being more particularly described as follows:

Beginning at a Logan County resurvey monument found inside a monument box the northwest corner of Section 25, at the intersection of center-lines of County Highway 43 (60 feet wide) and Township Road 33 (60 feet wide).

THENCE, with the west line of Section 25, west line of Union Township and the center-line of Township Road 33, S 5°-00'-00"W, a distance of 501.90 feet to a MAG nail set at THE TRUE POINT OF BEGINNING.

THENCE, with the center-line of a 30 feet wide ditch N 87°-09'-32"E, a distance of 336.34 feet to a point, passing a point on the east right-of-way of Township Road 33 at 30.28 feet. Said Point on right-of-way referenced by a 5/8 inch iron rod set S 5°-00'-00"W, a distance of 15.00 feet.

THENCE, S 5°-00'-00"W, a distance of 545.89 feet to a 5/8 inch iron rod set, passing a 5/8 inch iron rod set at 15.00 feet.

THENCE, N 85°-00'-00"W, a distance of 333.19 feet to a MAG nail set, passing a 5/8 inch iron rod set at 303.19 feet.

THENCE, with the west line of Section 25, west line of Union Township and the center-line of Township Road 33, N 5°-00'-00"E, a distance of 500.00 feet to the point of beginning.

Containing 4.000 acres of which 0.346 acre is within the highway right-of-way.

The basis for bearings is the west line of Section 25 being S 5°-00'-00"W, and all other bearings are from angles and distances measured in a field survey by Lee Surveying and Mapping Co., Inc. on February 27, 2006



ORIGINAL STAMP IN GREEN

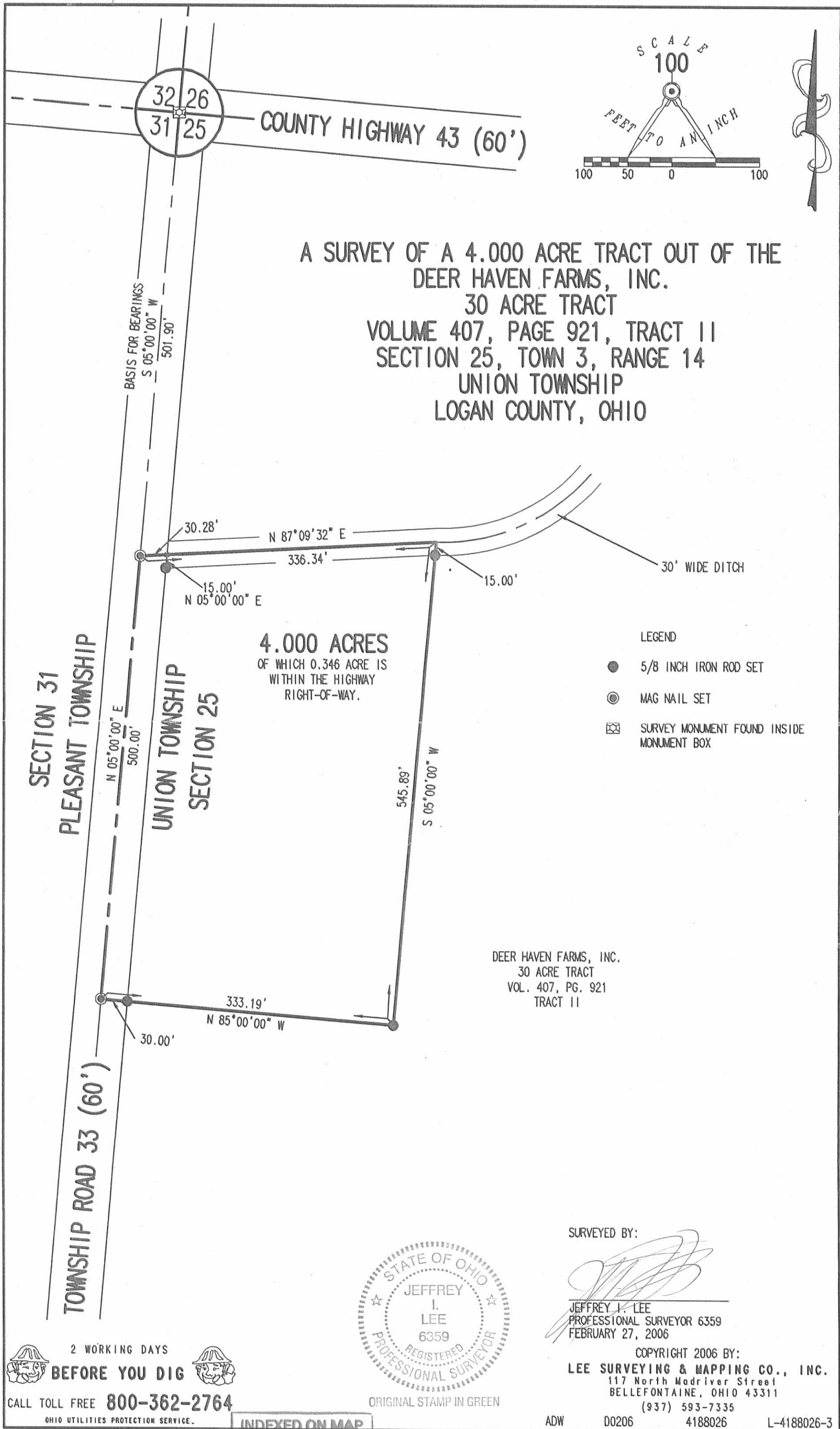
Description prepared by:

[Signature]
Jeffrey I. Lee
Professional Surveyor 6359
March 1, 2006

L-4188026



REC'D 3-7-06 8M/CL



2 WORKING DAYS
BEFORE YOU DIG
CALL TOLL FREE **800-362-2764**
OHIO UTILITIES PROTECTION SERVICE.



ORIGINAL STAMP IN GREEN

SURVEYED BY:
[Signature]
JEFFREY I. LEE
PROFESSIONAL SURVEYOR 6359
FEBRUARY 27, 2006

COPYRIGHT 2006 BY:
LEE SURVEYING & MAPPING CO., INC.
117 North Madriver Street
BELLEFONTAINE, OHIO 43311
(937) 593-7335

INDEXED ON MAP
9535 1P

ADW D0206 4188026 L-4188026-3