

PO 2-26-07 SMJ OK

**LESLIE H. GEESLIN**

REGISTERED SURVEYOR 5248

P. O. BOX 274

RUSHSVLVANIA, OHIO 43347

TELEPHONE: (513) 468-7265

**ROBY SURVEY**

February 23, 2007

The following described real estate situated in the State of Ohio, County of Logan, Township of Union, being part of the east half of the northwest quarter of Section 19, Town 3, Range 14, M. R. S. and more particularly described as follows:

Beginning at a magnetic nail set in the centerline of County Highway 43 at the northeast corner of David W. Campbell etux's 65.50 acre tract as described in D. B. Vol. 408 Page 293.

Thence with the centerline of C. H. 43 S. 89° 25' 09" E. 315.92 feet to a magnetic nail set.

Thence S. 1° 24' 38" W. 552.60 feet to a 5/8 inch iron bar set, passing a 5/8 inch iron bar set at 30.00 feet.

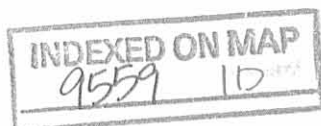
Thence N. 89° 25' 18" W. 315.92 feet to a 5/8 inch iron bar set in the east line of said Campbell's 65.50 acre tract.

Thence with said Campbell's east line N. 1° 24' 39" E. 552.60 feet to the place of beginning, passing a 5/8 inch iron bar set at 522.60 feet.

Containing 4.007 acres more or less, of which 0.218 acre is in the right of way of C. H. 43.

The above described 4.007 acre tract being in the northwest corner of Dennis E. Roby Trustee's 80.7 acre tract as described in O. R. Vol. 824 Page 301.

Bearings are based on an assumed bearing ( S. 89° 25' 09" E. ) for the centerline of C. H. 43 in this field survey by Leslie H. Geeslin, Reg. Surveyor No. 5248 on Feb. 23, 2007.



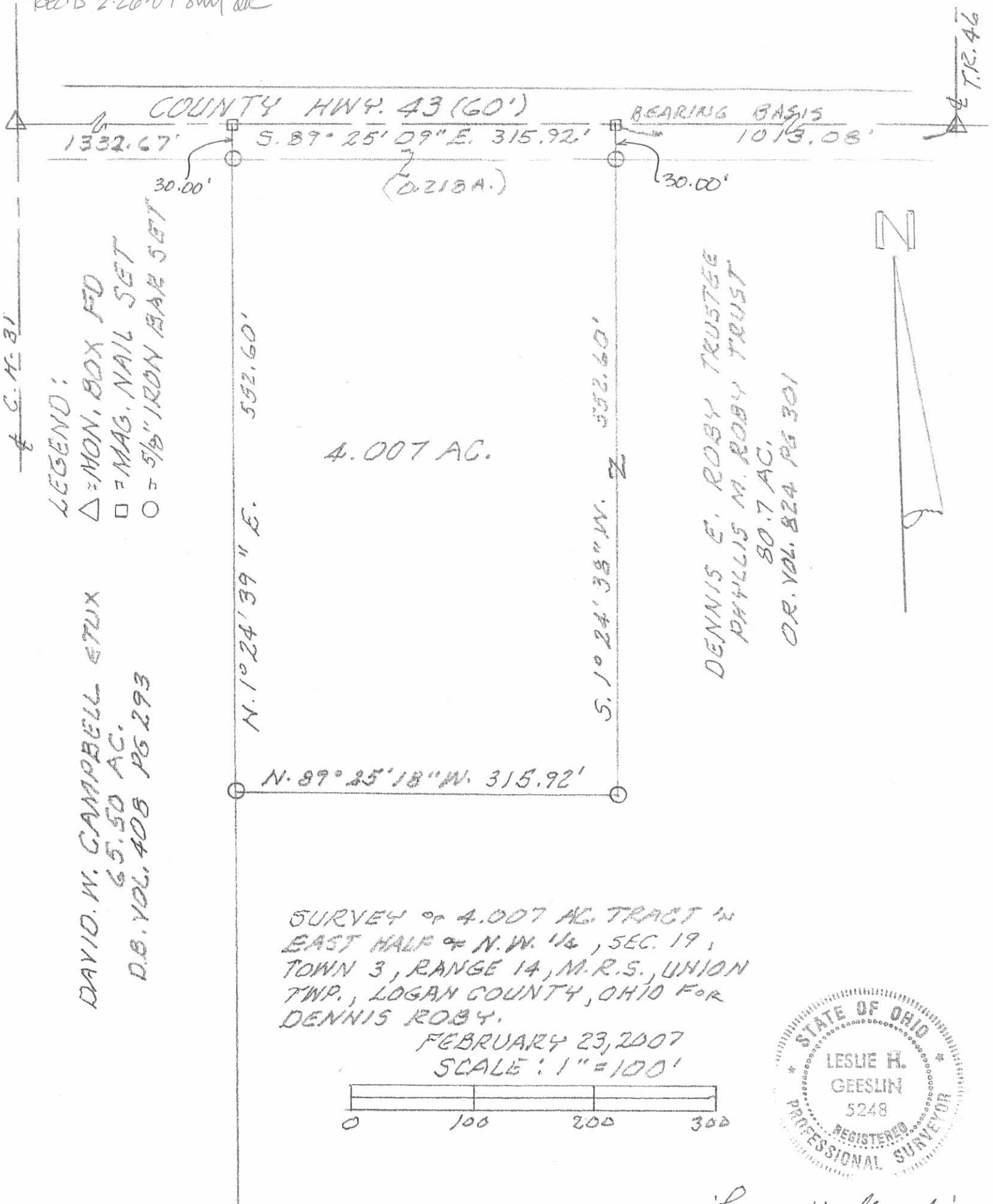
*Leslie H. Geeslin*

C. H. 31

LEGEND:

- △ = MON. BOX FD
- = MAG. NAIL SET
- = 5/8" IRON BAR SET

DAVID W. CAMPBELL ETUX  
 65.50 AC.  
 D.B. VOL. 408 PG 293



4.007 AC.

DENNIS E. ROBY TRUSTEE  
 PHYLLIS M. ROBY TRUST  
 80.7 AC.  
 O.R. VOL. 824 PG 301



SURVEY OF 4.007 AC. TRACT IN  
 EAST HALF OF N.W. 1/4, SEC. 19,  
 TOWN 3, RANGE 14, M.R.S., UNION  
 TWP., LOGAN COUNTY, OHIO FOR  
 DENNIS ROBY.

FEBRUARY 23, 2007  
 SCALE: 1" = 100'



*Leslie H. Geeslin*  
 LESLIE H. GEESLIN  
 RUSHSVLVANIA, OH  
 PH 937-468-7225

INDEXED ON MAP  
 9589 1P