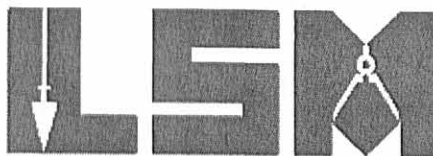


# Lee Surveying and Mapping Co., Inc.

Land Surveys • Topography • Subdivisions • Construction Layout

117 N. Madriver St.  
Bellefontaine OH 43311



Phone: (937) 593-7335  
Fax: (937) 593-7444

## SHULTZ 27.701 ACRES

Lying in Section 20, Town 3, Range 14, Union Township, Logan County, Ohio.

Being out of the Rick D. Shultz and Connie J. Shultz 80 acre tract as deeded and described in Official Record 503, Page 343 of the Logan County Records of Deeds and being more particularly described as follows:

Commencing on a 3/4 inch iron rod found on the northeast corner of the northwest quarter of Section 20 at the intersection of the center-line of Township Road 46 on the north line of Union Township and the south line of Harrison Township.

THENCE, with the east line of the northwest quarter of Section 20 and the center-line of Township Road 46 (30 feet wide), S 06°-08'-19"W, a distance of 1764.15 feet to a MAG nail set at the TRUE POINT OF BEGINNING, passing a MAG nail set at 601.50 feet.

THENCE, with the east line of the northwest quarter of Section 20 and the center-line of Township Road 46, S 06°-08'-19"W, a distance of 904.00 feet to a MAG nail set over the top of a badly bent 3/4 inch iron rod found.

THENCE, with the south line of the northwest quarter of Section 20 and the north line of the John Kerr 20 acre tract (Vol. 320, Pg. 190, Tract 1), N 84°-20'-57"W, a distance of 1334.30 feet to a 5/8 inch iron rod found, passing a 5/8 inch iron rod set at 25.00 feet.

THENCE, with the east lines of the Ronnie L. Ansback 17.637 acre tract (O.R. 629, Pg. 887, Tract I) and the Russell, Motz & Russell Investments, PLL, 62.363 acre tract (O.R. 760, Pg. 289, Tract IV), N 06°-04'-09"E, a distance of 903.99 feet to a 5/8 inch iron rod set.

THENCE, S 84°-20'-57"E, a distance of 1335.40 feet to the point of beginning, passing a 5/8 inch iron rod set at 1310.40 feet.

Containing 27.701 acres, of which 0.311 acre is within the highway right-of-way.

The basis for bearings is the center-line of Township Road 46, being S 06°-08'-19"W, and all other bearings are from angles and distances measured in a field survey by Lee Surveying and Mapping Co., Inc. on March 17, 2009.

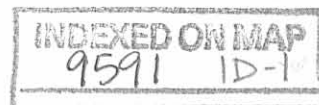


ORIGINAL STAMP IN GREEN

Description prepared by:

William K. Bruce  
Professional Surveyor 7437  
March 18, 2009

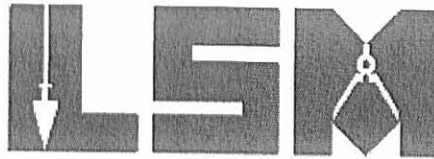
4763039



# Lee Surveying and Mapping Co., Inc.

Land Surveys • Topography • Subdivisions • Construction Layout

117 N. Madriver St.  
Bellefontaine OH 43311



Phone: (937) 593-7335  
Fax: (937) 593-7444

## SHULTZ 18.464 ACRES

Lying in Section 20, Town 3, Range 14, Union Township, Logan County, Ohio.

Being out of the Rick D. Shultz and Connie J. Shultz 80 acre tract as deeded and described in Official Record 503, Page 343 of the Logan County Records of Deeds and being more particularly described as follows:

Beginning on a 3/4 inch iron rod found on the northeast corner of the northwest quarter of Section 20 at the intersection of the center-line of Township Road 46 on the north line of Union Township and the south line of Harrison Township.

THENCE, with the east line of the northwest quarter of Section 20 and the center-line of Township Road 46 (30 feet wide), S 06°-08'-19"W, a distance of 601.50 feet to a MAG nail set.

THENCE, N 84°-16'-39"W, a distance of 1336.79 feet to a 5/8 inch iron rod set, passing a 5/8 inch iron rod set at 25.00 feet.

THENCE, with the east line of the Russell, Motz & Russell Investments, PLL, 62.363 acre tract (O.R. 760, Pg. 289, Tract IV), N 06°-04'-09"E, a distance of 601.49 feet to a 5/8 inch iron rod set on the north line of Section 20.

THENCE, with the north line of Section 20, the north line of Union Township, the south line of Harrison Township and the south lines of the David L. Jackson and Shirley Jean Jackson, Co-Trustees, 20 acre tract (O.R. 858, Pg. 81) and 46.883 acre tract (O.R. 858, Pg. 74), S 84°-16'-39"E, a distance of 1337.52 feet to the point of beginning, passing a concrete right-of-way monument found at 1312.52 feet and a 5/8 inch iron rod set at 1322.52 feet.

Containing 18.464 acres, of which 0.207 acre is within the highway right-of-way.

The basis for bearings is the center-line of Township Road 46, being S 06°-08'-19"W, and all other bearings are from angles and distances measured in a field survey by Lee Surveying and Mapping Co., Inc. on March 17, 2009.

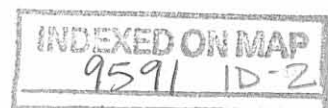


ORIGINAL STAMP IN GREEN

Description prepared by:

William K. Bruce  
Professional Surveyor 7437  
March 18, 2009

4763039



REC'D 3-20-09 smj/ok

CHARLOTTE M. JACKSON  
30 ACRES  
VOL. 362, PG. 132

DAVID L. JACKSON AND  
SHIRLEY JEAN JACKSON,  
CO-TRUSTEES  
20.00 ACRES  
O.R. 858, PG. 81

DAVID L. JACKSON AND  
SHIRLEY JEAN JACKSON,  
CO-TRUSTEES  
46.883 ACRES  
O.R. 858, PG. 74

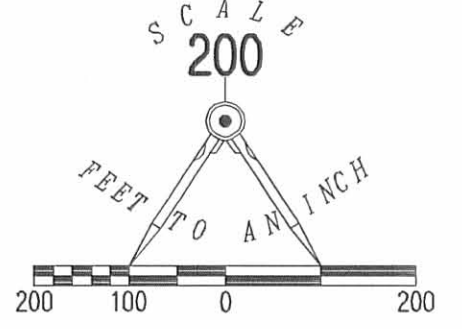
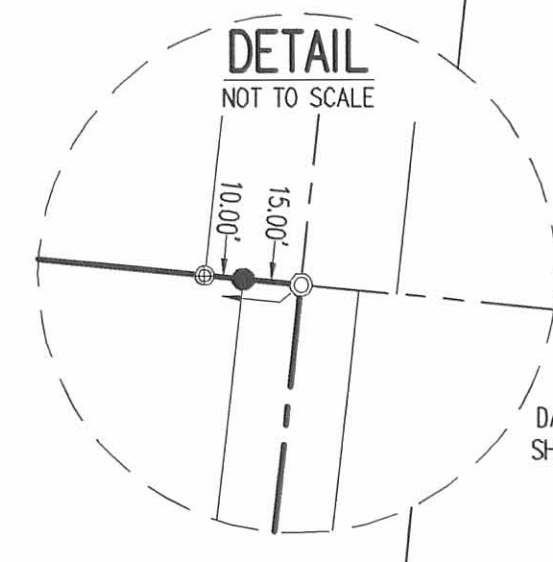
RUSSELL, MOTZ &  
RUSSELL INVESTMENTS, PLL  
62.363 ACRES  
O.R. 760, PG. 289  
TRACT IV

RICK D. SHULTZ AND  
CONNIE J. SHULTZ  
80 ACRES  
O.R. 503, PG. 343

RONNIE L. ANSBACK  
17.637 ACRES  
O.R. 629, PG. 887  
TRACT I

RONNIE L. ANSBACK  
40 ACRES  
O.R. 629, PG. 887  
TRACT II

JOHN KERR  
20 ACRES  
VOL. 320, PG. 190  
TRACT 1



27 21  
26 20

SECTION 21, TOWN 3, RANGE 14  
SECTION 20, TOWN 3, RANGE 14

HARRISON TOWNSHIP  
UNION TOWNSHIP

COUNTY HIGHWAY 31

18.464 ACRES  
OF WHICH 0.207 ACRE IS WITHIN  
THE HIGHWAY RIGHT-OF-WAY

27.701 ACRES  
OF WHICH 0.311 ACRE IS WITHIN  
THE HIGHWAY RIGHT-OF-WAY

TOWNSHIP ROAD 46 (30')

- LEGEND:
- ☒ STONE FOUND IN MONUMENT BOX
  - ⊙ 3/4 INCH IRON ROD FOUND
  - 5/8 INCH IRON ROD FOUND
  - 5/8 INCH IRON ROD SET
  - ⊙ MAG NAIL SET
  - ⊕ CONCRETE RIGHT-OF-WAY MONUMENT FOUND
  - MAG NAIL SET OVER TOP OF BADLY BENT 3/4 INCH IRON PIPE FOUND

SURVEY OF TWO TRACTS OUT OF THE  
RICK D. SHULTZ AND  
CONNIE J. SHULTZ  
80 ACRE TRACT  
OFFICIAL RECORD 503, PAGE 343  
SECTION 20, TOWN 3, RANGE 14  
UNION TOWNSHIP  
LOGAN COUNTY, OHIO

SURVEYED BY:  
*William K. Bruce*  
WILLIAM K. BRUCE  
PROFESSIONAL SURVEYOR 7437  
MARCH 17, 2009



COPYRIGHT 2009 BY:  
LEE SURVEYING & MAPPING CO., INC.  
117 North Madriver Street  
BELLEFONTAINE, OHIO 43311  
(937) 593-7335  
surveys@lsmcinc.us

2 WORKING DAYS  
BEFORE YOU DIG  
CALL TOLL FREE 800-362-2764  
OHIO UTILITIES PROTECTION SERVICE

INDEXED ON MAP  
9591 1P

KSS D0309 4763039 L-4763-2

6-18-14

# Lee Surveying and Mapping Co., Inc.



**APPROVED**

Land Surveys • Topography • Subdivisions • Construction Layout

117 N. Madriver St.  
Bellefontaine OH 43311



Phone: (937) 593-7335  
Fax: (937) 593-7444  
surveys@lsminc.us

## SHULTZ 13.247 ACRES

Lying in Section 20, Town 3, Range 14, Union Township, Logan County, Ohio.

Being out of the Rick D. Shultz and Connie J. Shultz original 80 acre tract as deeded and described in Official Record 503, Page 343 of the Logan County Records of Deeds and being more particularly described as follows:

Commencing at a 3/4 inch iron rod found at the intersection of the center-line of Township Road 46 (30 feet wide) and the north line of Union Township and the north line of Section 20.

THENCE, with the center-line of Township Road 46, S 06°-08'-19"W, a distance of 823.19 feet to a MAG nail set at the TRUE POINT OF BEGINNING.

THENCE, with the center-line of Township Road 46, S 06°-08'-19"W, a distance of 264.56 feet to a MAG nail set.

THENCE, N 85°-04'-47"W, a distance of 729.88 feet to a 5/8 inch iron rod set, passing a 5/8 inch iron rod set at 15.00 feet.

THENCE, S 06°-19'-04"W, a distance of 489.43 feet to a 5/8 inch iron rod set.

THENCE, N 86°-23'-22"W, a distance of 534.54 feet to a 5/8 inch iron rod set.

THENCE, N 06°-15'-53"E, a distance of 844.26 feet to a 5/8 inch iron rod set.

THENCE, S 84°-59'-47"E, a distance of 534.06 feet to a 5/8 inch iron rod set.

THENCE, S 06°-16'-53"W, a distance of 205.36 feet to a 5/8 inch iron rod set.

THENCE, S 83°-49'-32"E, a distance of 481.04 feet to a 5/8 inch iron rod set.

THENCE, N 06°-33'-01"E, a distance of 144.32 feet to a 5/8 inch iron rod set.

9591 2D-1

# Lee Surveying and Mapping Co., Inc.

Land Surveys • Topography • Subdivisions • Construction Layout

117 N. Madriver St.  
Bellefontaine OH 43311



Phone: (937) 593-7335  
Fax: (937) 593-7444  
surveys@lsminc.us

THENCE, S 83°-46'-03"E, a distance of 247.89 feet to the point of beginning, passing a 5/8 inch iron rod set at 232.89 feet.

Containing 13.247 acres of which 0.091 acre is within the highway right-of-way.

Property is subject to any and all previous easements and rights-of-way of record.

The basis for bearings is the center-line of Township Road 46, being S 06°-08'-19"W, and all other bearings are from angles and distances measured in a field survey by Lee Surveying and Mapping Co., Inc. on June 10, 2014.

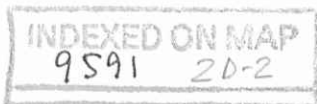
Description prepared by:

A handwritten signature in black ink that reads "William K. Bruce". The signature is written in a cursive, flowing style.

William K. Bruce  
Professional Surveyor 7437  
June 10, 2014



L-57510514





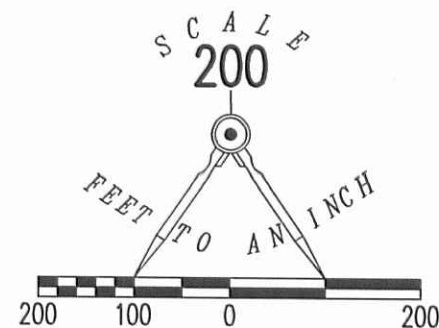
6-18-14

**APPROVED**

2 WORKING DAYS  
**BEFORE YOU DIG**  
CALL TOLL FREE **800-362-2764**  
OHIO UTILITIES PROTECTION SERVICE

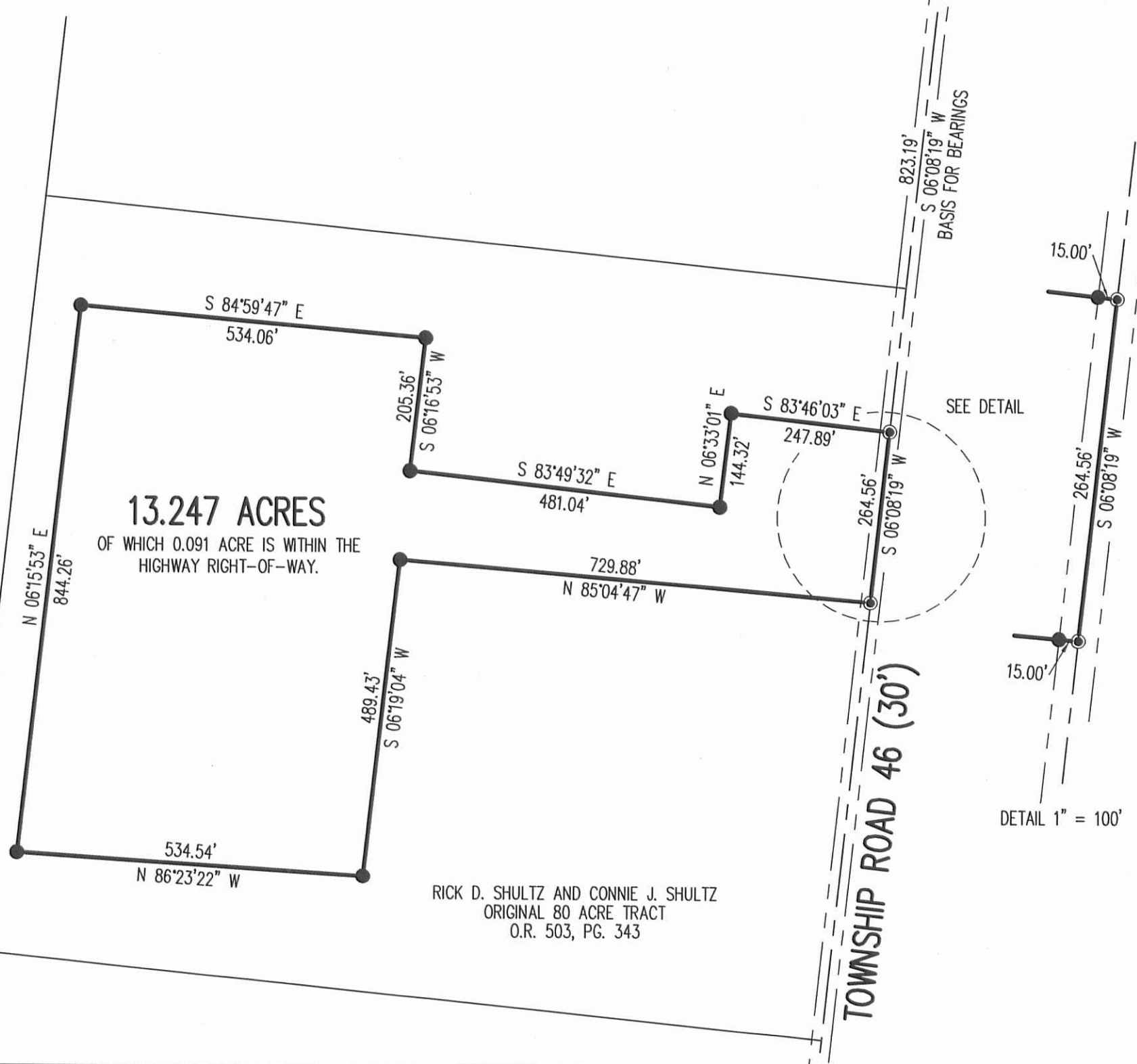
HARRISON TOWNSHIP  
UNION TOWNSHIP

SECTION 21, TOWN 3, RANGE 14  
SECTION 20, TOWN 3, RANGE 14



LEGEND

- 5/8 INCH IRON ROD SET WITH PLASTIC I.D. CAP STAMPED "LSM 7437"
- ⊙ 3/4 IRON ROD FOUND
- ⊙ MAG NAIL SET



A SURVEY OF 13.247 ACRES OUT OF THE  
RICK D. SHULTZ AND CONNIE J. SHULTZ  
ORIGINAL 80 ACRE TRACT  
OFFICIAL RECORD 503, PAGE 343  
SECTION 20, TOWN 3, RANGE 14  
UNION TOWNSHIP  
LOGAN COUNTY, OHIO

SURVEYED BY:

*William K. Bruce*

WILLIAM K. BRUCE  
PROFESSIONAL SURVEYOR 7437  
JUNE 10, 2014



COPYRIGHT 2014 BY:  
**LEE SURVEYING & MAPPING CO., INC.**  
117 North Madriver Street  
BELLEFONTAINE, OHIO 43311  
(937) 593-7335  
WWW.LSMINC.US  
surveys@lsminc.us

ADW D0514 57510514 L-5751-3

INDEXED ON MAP  
9591 2P