

REC'D 11-16-11 svy an

Lee Surveying and Mapping Co., Inc.

Land Surveys • Topography • Subdivisions • Construction Layout

117 N. Madriver St.
Bellefontaine OH 43311



Phone: (937) 593-7335
Fax: (937) 593-7444

PLANK, TRUSTEE 5.000 ACRES

Lying in Section 16, Town 4, Range 13, Union Township, Logan County, Ohio.

Being out of the J. Lee Plank, Trustee, 83.25 acre tract as deeded and described in Official Record 952, Page 524, Parcel II of the Logan County Records of Deeds and being more particularly described as follows:

Commencing on a boat spike found on the southeast corner of Section 16 on the Union Township, Logan County - Harrison Township, Champaign County Line at the intersection of the center-lines of Township Road 18 and Township Road 7.

THENCE, with the east line of Section 16 and the center-line of Township Road 18 (40 feet wide), N 00°-00'-00"E, a distance of 2159.19 feet to a railroad spike set at the TRUE POINT OF BEGINNING.

THENCE, S 89°-51'-26"W, a distance of 430.95 feet to a 5/8 inch iron rod set, passing a 5/8 inch iron rod set at 20.00 feet.

THENCE, N 02°-37'-31"E, a distance of 520.38 feet to a 5/8 inch iron rod set on the north line of the southeast quarter of Section 16.

THENCE, with the north line of the southeast quarter of Section 16 and the south line of the Richard Yoder original 168 acre tract (O.R. 382, Pg. 866, Tract I), N 89°-51'-26"E, a distance of 407.11 feet to a railroad spike found on the east line of Section 16, at the intersection of the center-lines of Township Road 18 and Township Road 197, passing a 5/8 inch iron rod set at 387.11 feet.

THENCE, with the east line of Section 16 and the center-line of Township Road 18, S 00°-00'-00"W, a distance of 519.77 feet to the point of beginning.

Containing 5.000 acres, of which 0.239 acre is within the highway right-of-way.

The basis for bearings is the east line of Section 16, being N 00°-00'-00"E, and all other bearings are from angles and distances measured in a field survey by Lee Surveying and Mapping Co., Inc. on March 11, 2009 and November 14, 2011.

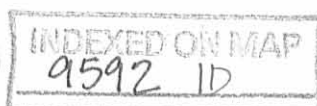
Description prepared by:



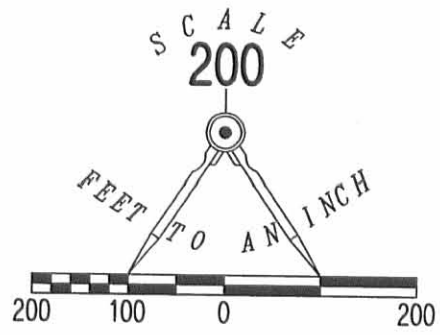
William K. Bruce

William K. Bruce
Professional Surveyor 7437
November 14, 2011

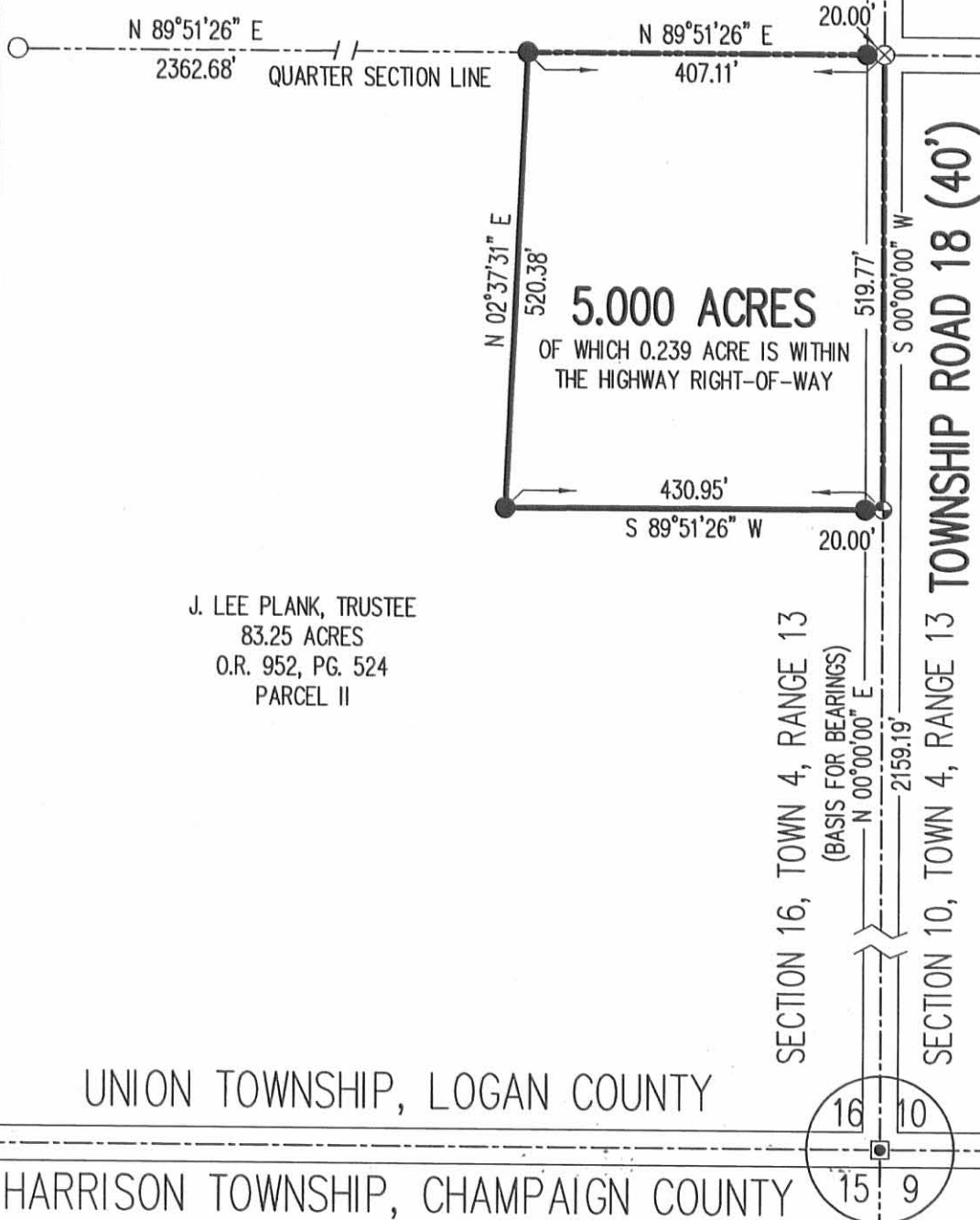
47611111



REC'D 11-14-11 SMY/OK



RICHARD YODER
ORIGINAL 168 ACRES
O.R. 382, PG. 866
TRACT I



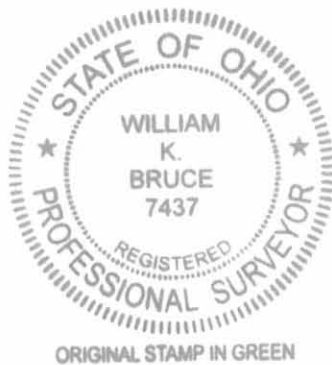
LEGEND:

- BOAT SPIKE FOUND
- ⊗ RAILROAD SPIKE FOUND
- ⊕ RAILROAD SPIKE SET
- 5/8 INCH IRON ROD FOUND
- 5/8 INCH IRON ROD SET

J. LEE PLANK, TRUSTEE
83.25 ACRES
O.R. 952, PG. 524
PARCEL II

**SURVEY OF 5.000 ACRES OUT OF THE
J. LEE PLANK, TRUSTEE
83.25 ACRE TRACT
OFFICIAL RECORD 952, PAGE 524
PARCEL II
SECTION 16, TOWN 4, RANGE 13
UNION TOWNSHIP
LOGAN COUNTY, OHIO**

SURVEYED BY:



William K. Bruce
WILLIAM K. BRUCE
PROFESSIONAL SURVEYOR 7437
MARCH 11, 2009
REVISED NOVEMBER 14, 2011

COPYRIGHT 2011 BY:
LEE SURVEYING & MAPPING CO., INC.
117 North Madriver Street
BELLEFONTAINE, OHIO 43311
(937) 593-7335
surveys@lsminc.us
KSS D1111 47611111 L-4761-3

INDEXED ON MAP
9592 IP



CALL TOLL FREE **800-362-2764**
OHIO UTILITIES PROTECTION SERVICE.