

12-29-17



APPROVED

Lee Surveying and Mapping Co., Inc.

Land Surveys • Topography • Subdivisions • Construction Layout

117 N. Madriver St.
Bellefontaine OH 43311



Phone: (937) 593-7335
Fax: (937) 593-7444
surveys@lsminc.us

ADAMS 4.219 ACRES

Lying in Sections 17 & 18, Town 4, Range 13, Union Township, Logan County, Ohio.

Being out of the Jeanie E. Adams 70 acre tract and 0.81 acre tract as deeded and described in Volume 384, Page 894 (First and Third description) of the Logan County Records of Deeds and being more particularly described as follows:

Commencing on a 1 inch iron rod found in a monument box on an angle point on the center-line of Township Road 30 at Station 232 + 72 (Logan County Engineer's Field Book 575, Page 51).

THENCE, with the center-line of Township Road 30 (40 feet wide), S 79°-47'-48"E, a distance of 33.07 feet to a MAG nail set at the TRUE POINT OF BEGINNING.

THENCE, with the center-line of Township Road 30, S 79°-47'-48"E, a distance of 346.74 feet to a MAG nail set.

THENCE, S 11°-03'-28"W, a distance of 574.60 feet to a 5/8 inch iron rod set, passing a 5/8 inch iron rod set at 20.00 feet.

THENCE, N 43°-50'-26"W, a distance of 54.67 feet to a 5/8 inch iron rod set.

THENCE, N 65°-22'-44"W, a distance of 28.68 feet to a 5/8 inch iron rod set.

THENCE, N 83°-06'-07"W, a distance of 256.13 feet to a 5/8 inch iron rod set.

THENCE, N 09°-07'-02"E, a distance of 550.16 feet to the point of beginning, passing a 5/8 inch iron rod set at 533.56 feet.

Containing 4.219 acres, of which 0.159 acre is within the highway right-of-way. There are 3.884 acres within Section 17 and 0.335 acre within Section 18.

Property is subject to any and all previous easements and rights-of-way of record.

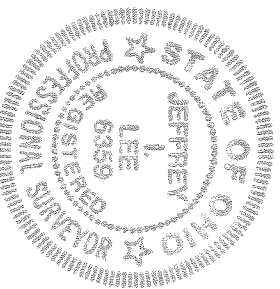
The basis for bearings is the center-line of Township Road 30 between Station 232 + 72 and Station 236 + 71, being S 79°-47'-48"E, and all other bearings are from angles and distances measured in a field survey by Lee Surveying and Mapping Co., Inc. on December 5, 2017.

Description prepared by:


Jeffrey I. Lee

Professional Surveyor 6359
December 6, 2017

54991117



ORIGINAL STAMP IN GREEN

INDEXED ON MAP
9779

MEMBER: NATIONAL SOCIETY OF PROFESSIONAL SURVEYORS (NSPS)
PROFESSIONAL LAND SURVEYORS OF OHIO (PLSO)

APPROVED

STATION 232+72
(LOGAN COUNTY ENGINEER'S
FIELD BOOK 575, PAGE 51)

TOWNSHIP ROAD 30 (40')

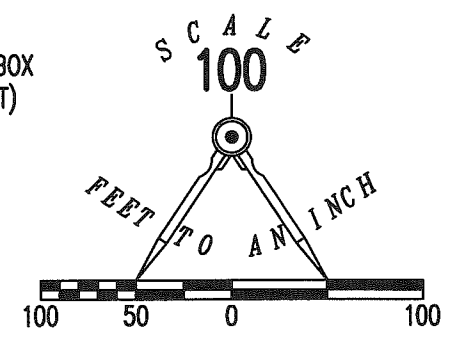
SECTION 18
SECTION 17

(BASIS FOR BEARINGS)
S 79°47'48" E

STATION 236+71
(LOGAN COUNTY ENGINEER'S
FIELD BOOK 575, PAGE 51)

LEGEND:

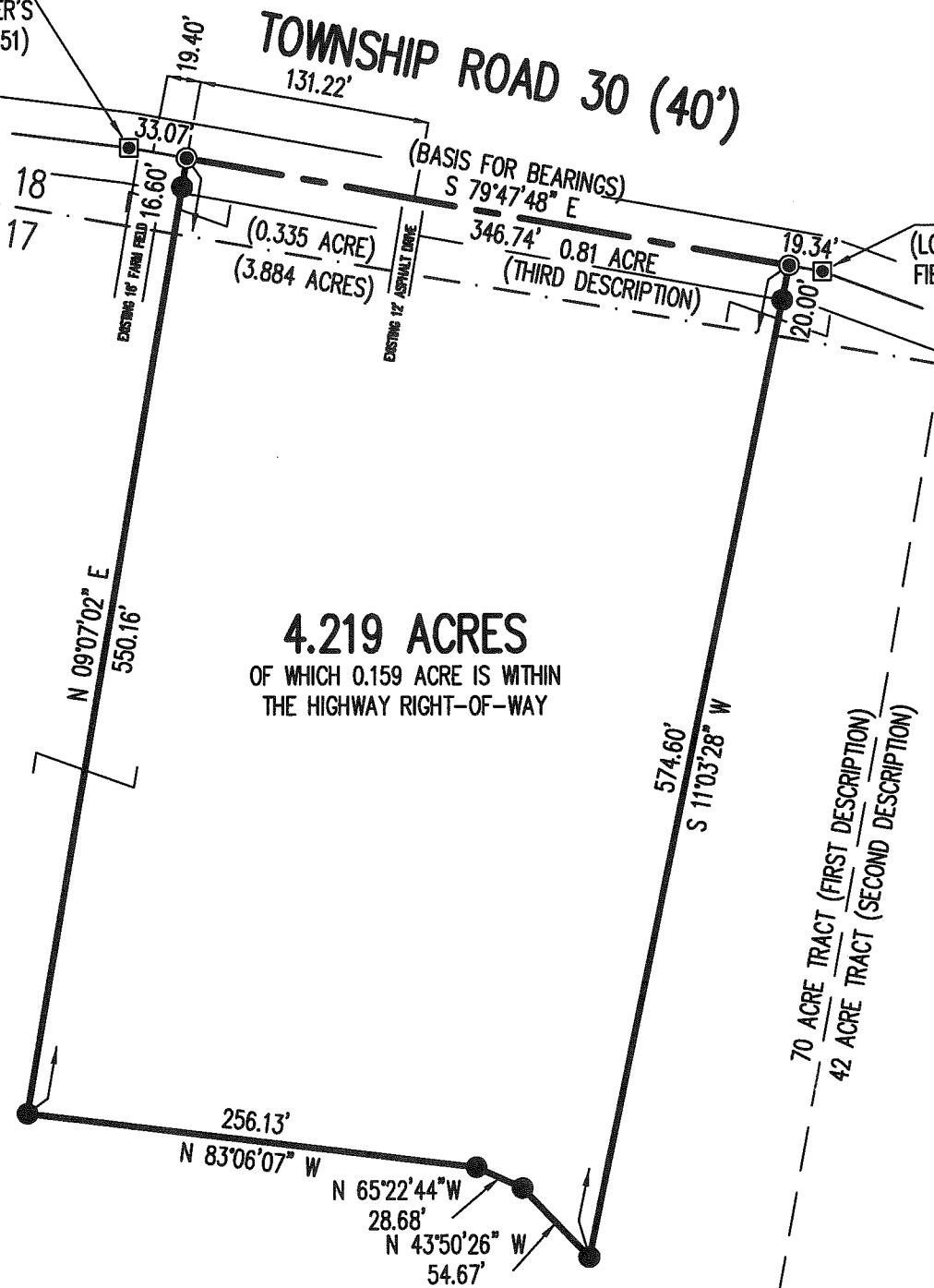
- 1 INCH IRON ROD FOUND IN MONUMENT BOX (MAG NAIL SET ON SURFACE OF ASPHALT)
- MAG NAIL SET
- 5/8 INCH IRON ROD SET WITH PLASTIC I.D. CAP STAMPED "LEE SURVEYING INC"



JEANIE E. ADAMS
70 ACRES
VOL. 384, PG. 894
(FIRST DESCRIPTION)

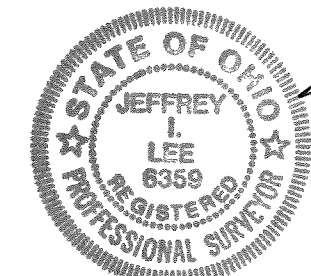
4.219 ACRES
OF WHICH 0.159 ACRE IS WITHIN
THE HIGHWAY RIGHT-OF-WAY

SURVEY OF 4.219 ACRES OUT OF THE
JEANIE E. ADAMS
70 ACRE TRACT AND
0.81 ACRE TRACT
VOLUME 384, PAGE 894
FIRST AND THIRD DESCRIPTION
SECTIONS 17 & 18, TOWN 4, RANGE 13
UNION TOWNSHIP
LOGAN COUNTY, OHIO



SURVEYED BY:

Jeffrey I. Lee
 JEFFREY I. LEE
 PROFESSIONAL SURVEYOR 6359
 DECEMBER 5, 2017

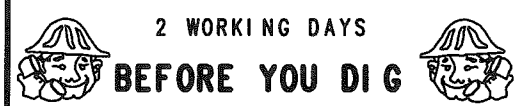


ORIGINAL STAMP IN GREEN

COPYRIGHT 2017 BY:
 LEE SURVEYING & MAPPING CO., INC.
 117 North Madriver Street
 BELLEFONTAINE, OHIO 43311
 (937) 593-7335
 WWW.LSMINC.US
 surveys@lsminc.us

KSS D1217 54991117 L-5499-3

THIS SURVEY WAS PREPARED IN THE ABSENCE OF
A COMPLETE AND ACCURATE TITLE SEARCH AND
DOES NOT GUARANTEE TITLE.



CALL TOLL FREE 800-362-2764
OHIO UTILITIES PROTECTION SERVICE.

INDEXED ON MAP
9719