

REC'D 4-29-97 SWY OK ✓



Lee Surveying and Mapping Co., Inc.



Farm Surveys • Lot Surveys • Topography • Subdivisions • Construction Layout

117 NORTH MADRIVER STREET
BELLEFONTAINE, OHIO 43311

(937) 593-7335
FAX (937) 593-7444

VAN GORDER FARMS COMBINED TRACTS FOR EXCEPTION TO THE 81.28 ACRE TRACT

Lying in Section 24, Town 7, Range 8, Washington Township, Logan County, Ohio.

Being out of the Van Gorder Farms original 81.28 acre tract as deeded and described in Volume 233, Page 297 and Official Record 273, Page 835 of the Logan County Records of Deeds and being more particularly described as follows:

Beginning at a 1 inch metal pipe found on the center-line of Township Road 213 at the southeast corner of the southwest quarter of Section 24.

THENCE, with the south line of Section 24 and the north line of the Timothy E. Knief 95.23 acre tract (Vol. 404, Pg. 956), S 88°-34'-29" W, a distance of 493.43 feet to a 5/8 inch iron rod set, passing a 5/8 inch iron rod set at 30.00 feet.

THENCE, N 1°-03'-17" W, a distance of 1325.05 feet to a 5/8 inch iron rod set.

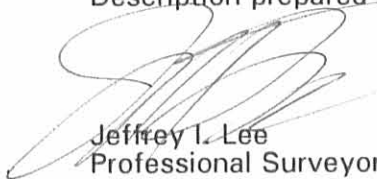
THENCE, with the south lines of the Bert Renick, Jr. original 50.0 acre tract (Vol. 373, Pg. 623) and the Robert P. Berg 10.000 acre tract (O.R. 125, Pg. 93, Tr. II) N 88°-45'-52" E, a distance of 493.42 feet to a MAG nail set, passing a 5/8 inch iron rod set at 463.42 feet.

THENCE, with the east line of the southwest quarter of Section 24 and the center-line of Township Road 213, S 1°-03'-17" E, a distance of 1323.41 feet to the point of beginning.

Containing 15.000 acres of which 0.912 acre is within the highway right-of-way.

The basis for bearings is the east line of the southwest quarter of Section 24 being S 1°-03'-17" E, and all other bearings are from angles and distances measured in a field survey by Lee Surveying and Mapping Co., Inc. on April 14, 1997.

Description prepared by:


Jeffrey I. Lee
Professional Surveyor 6359
April 21, 1997



L 2308

ORIGINAL STAMP IN GREEN

INDEXED ON MAP
1050 SD

COUNTY HIGHWAY 54 (60')

1/4 SECTION LINE

BERT RENICK JR.
ORIGINAL 50 ACRES
VOL. 373, PG. 623

ROBERT P. BERG
AND
KATHY J. BRAUTIGAM
10.00 AC.
O. R. 125, PG. 93
TRACT II

2 WORKING DAYS
BEFORE YOU DIG
CALL TOLL FREE **800-362-2764**
OHIO UTILITIES PROTECTION SERVICE.

LEGEND

- 5/8 IRON ROD SET
- ⊙ MAG NAIL SET
- ⊗ RAILROAD SPIKE FOUND
- 1" METAL PIPE FOUND



N 88° 45' 52" E
493.42'

TRACT E
3.333 ACRES
OF WHICH 0.203 IS IN
HIGHWAY RIGHT-OF-WAY

N 88° 45' 52" E
493.42'

TRACT D
5.000 ACRES
OF WHICH 0.304 IS IN
HIGHWAY RIGHT-OF-WAY

N 88° 45' 52" E
493.42'

TRACT C
3.333 ACRES
OF WHICH 0.203 IS IN
HIGHWAY RIGHT-OF-WAY

N 88° 45' 52" E
493.42'

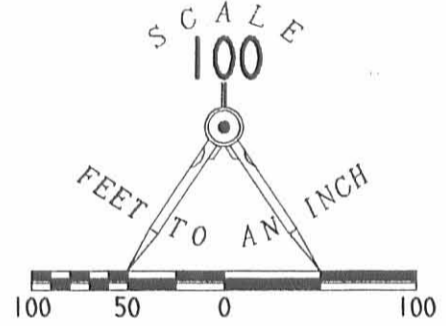
TRACT B
3.333 ACRES
OF WHICH 0.202 IS IN
HIGHWAY RIGHT-OF-WAY

S 88° 34' 29" W
493.43'

TIMOTHY E. KNIEF
95.23 AC.
VOL. 404, PG. 956

INDEXED ON MAP
1050 SP

**SURVEY OF FOUR TRACTS
OUT OF THE
VAN GORDER FARMS
ORIGINAL 81.28 ACRE TRACT
VOLUME 233, PAGE 297
AND
OFFICIAL RECORD 273, PAGE 835
SECTION 24, TOWN 7, RANGE 8
WASHINGTON TOWNSHIP
LOGAN COUNTY, OHIO**



SURVEYED BY:

Jeffrey I. Lee
JEFFREY I. LEE
PROFESSIONAL SURVEYOR 6359
APRIL 14, 1997
REV. APRIL 29, 1997

ORIGINAL STAMP IN GREEN

COPYRIGHT 1997 BY:
LEE SURVEYING & MAPPING CO., INC.
117 North Madriver Street
BELLEFONTAINE, OHIO 43311
(937) 593-7335

SECTION 24, TOWN 7, RANGE 8
SECTION 25, TOWN 7, RANGE 8



REC'D 6-19-97 JMY BK ✓

Lee Surveying and Mapping Co., Inc.



Farm Surveys • Lot Surveys • Topography • Subdivisions • Construction Layout

117 NORTH MADRIVER STREET
BELLEFONTAINE, OHIO 43311

(937) 593-7335
FAX (937) 593-7444

VAN GORDER FARMS 3.356 ACRES

Lying in Section 23, Town 7, Range 8, Washington Township, Logan County, Ohio.

Being out of the Van Gorder Farms original 102.52 acre tract as deeded and described in Volume 233, Page 297, and Official Record 221, Page 396 of the Logan County Records of Deeds and being more particularly described as follows:

Beginning at a stone found at the intersection of the east line of Section 23 and the center-line of County Highway 54.

THENCE, with the center-line of County Highway 54 (60 feet wide), N 89°-57'-00" W, a distance of 938.21 feet to a 5/8 inch iron rod set at the TRUE POINT OF BEGINNING.

THENCE, with the lines of the William T. Keegan 40.0 acre tract (O.R. 55, Pg. 622) the following two courses:

N 89°-57'-00" W, a distance of 393.55 feet to a stone found.

S 00°-36'-15" E, a distance of 498.00 feet to a 5/8 inch iron rod set.

THENCE, N 89°-23'-45" W, a distance of 284.41 feet to a 5/8 inch iron rod set.

THENCE, N 0°-36'-15" E, a distance of 183.21 feet to a 5/8 inch iron rod set.

THENCE, N 31°-51'-14" E, a distance of 421.65 feet to a 5/8 inch iron rod set.

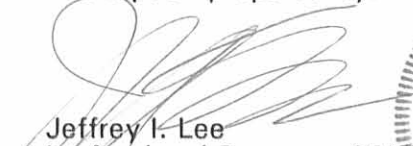
THENCE, N 42°-41'-22" E, a distance of 126.78 feet to a 5/8 inch iron rod set.

THENCE, with the former center-line of County Highway 54 (vacated) and a northerly line of the aforementioned 102.52 acre tract and a southerly line of the Sue Ann Keegan 80.0 acre tract (O.R. 84, Pg. 931, Par. IV), S 69°-25'-44" E, a distance of 398.16 feet to the point of beginning.

Containing 3.356 acres of which 0.075 acre is within the highway right-of-way.

The basis for bearings is based upon the north line of the Keegan 40.0 acre tract being N 89°-57'-00" W, and all other bearings are from angles and distances measured in a field survey by Lee Surveying and Mapping Company on June 22, 1995.

Description prepared by:


Jeffrey I. Lee
Professional Surveyor 6359
June 26, 1995
Revised April 25, 1997

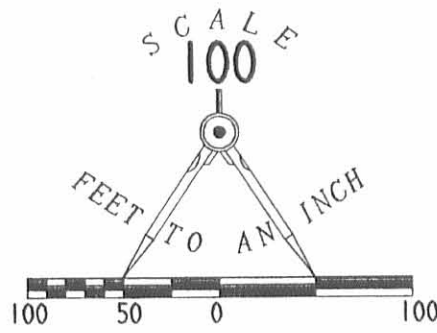


L 2308

ORIGINAL STAMP IN GREEN

INDEXED ON MAP
1050 6D

SUE ANN KEEGAN
 80.0 AC. 57.56
 O.R. 84. PG. 931. PAR. VII



REFERENCES

LOGAN COUNTY ENGINEER'S FILES:
 "X" 54A
 FIELD BOOK 692. PAGES 15.16.61
 FIELD BOOK 571. PAGE 43

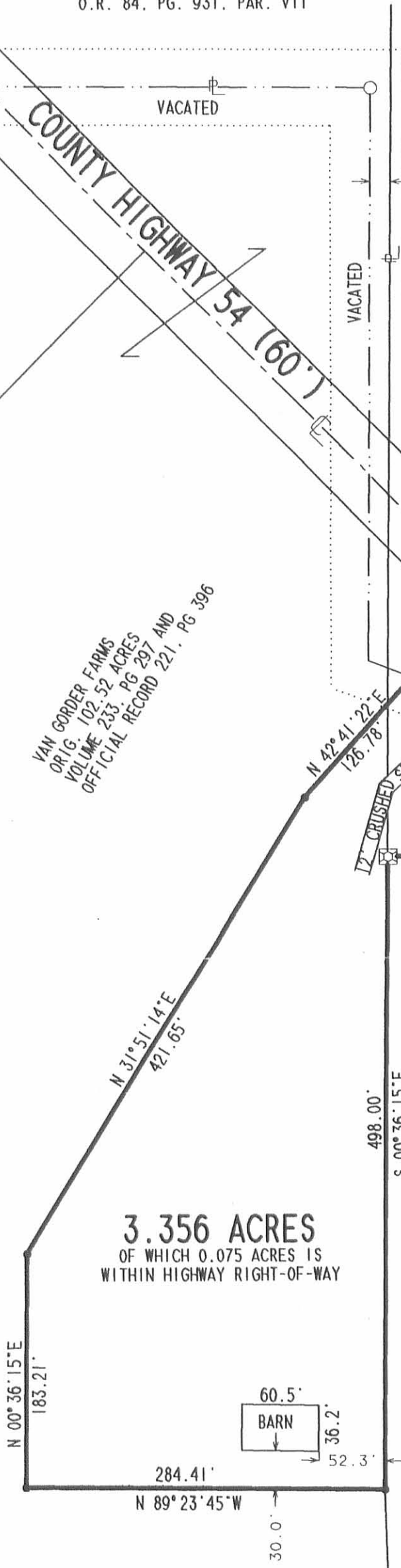
LEGEND

- 3/4" IRON PIPE FOUND
- ⊠ STONE FOUND
- 5/8" IRON ROD SET

SUE ANN KEEGAN
 80.0 AC.
 O.R. 84. PG. 931. PAR. IV

VAN GORDER FARMS
 ORIG. 102.52 ACRES
 VOLUME 233. PG 297 AND
 OFFICIAL RECORD 221. PG 396

SECTION 23. T-7S. R-8E
 SECTION 24. T-7S. R-8E



CURVE	DELTA ANGLE	RADIUS	ARC	TANGENT	CHORD	CHORD BEARING
C 1	45° 12' 52"	574.18'	453.11'	239.09'	441.44'	N 67° 20' 36" W

3.356 ACRES
 OF WHICH 0.075 ACRES IS
 WITHIN HIGHWAY RIGHT-OF-WAY

WILLIAM T. KEEGAN
 40 ACRES
 OFFICIAL RECORD 55. PG 622

**SURVEY OF 3.356 ACRES OUT OF
 THE VAN GORDER FARMS
 ORIGINAL 102.52 ACRE TRACT
 VOLUME 233. PAGE 297 AND
 OFFICIAL RECORD 221. PAGE 396
 SECTION 23. TOWN 7 SOUTH. RANGE 8 EAST
 WASHINGTON TOWNSHIP
 LOGAN COUNTY, OHIO**

SURVEYED BY:

Jeffrey I. Lee
 JEFFREY I. LEE
 PROFESSIONAL SURVEYOR 6359
 JUNE 22, 1995
 REVISED APRIL 25, 1997



ORIGINAL STAMP IN GREEN

COPYRIGHT 1995 BY:
LEE SURVEYING & MAPPING CO.
 143 East Columbus Avenue
 BELLEFONTAINE, OHIO 43311
 (513) 593-7335

INDEXED ON MAP
 1050 6P

2 WORKING DAYS
BEFORE YOU DIG
 CALL TOLL FREE **800-362-2764**
 OHIO UTILITIES PROTECTION SERVICE.

D 262 HVGORDER

L-2308-3 ✓

REC'D 10-10-97 smy

SUE ANN KEEGAN
ORIG. 124.23 AC
O.R. 84. PG. 931. PAR. VII

SCALE
100

F E E T
T O
A N
I N C H

100 50 0 100

COUNTY HIGHWAY 54 (60')

779.61'

1338.25'

N 85° 38' 51" W

187.94'

VACATED
370.69'

16.5'

VACATED

276.40'

N 00° 25' 47" E

485.30'

84.6'

124.29'

N 44° 44' 08" W

S 69° 25' 44" E
398.16'

LARRY A. SNIPES
3.356 ACRES
O.R. 330. PG. 256

SUE ANN KEEGAN
80.0 AC.
O.R. 84. PG. 931. PAR. IV

REFERENCES

LOGAN COUNTY ENGINEER'S FILES:
"X" 54A
FIELD BOOK 692, PAGES 15, 16, 61
FIELD BOOK 571, PAGE 43

LEGEND

- 3/4" IRON PIPE FOUND
- ⊠ STONE FOUND
- 5/8" IRON ROD SET
- ⊙ 3/4" IRON ROD FOUND
- ⊘ MAG NAIL SET
- ⊠ 1/2" THREADED STUD WITH 1" NUT FOUND

REICHERT LTD
ORIG 78.733 ACRES
O.R. 330. PG. 77

PARTIAL RETRACEMENT SURVEY
OF THE REICHERT LTD
ORIGINAL 78.733 ACRE TRACT
OFFICIAL RECORD 330, PAGE 77
SECTION 23, TOWN 7, RANGE 8
WASHINGTON TOWNSHIP
LOGAN COUNTY, OHIO



SURVEYED BY:
Jeffrey I. Lee

JEFFREY I. LEE
PROFESSIONAL SURVEYOR 6359
OCTOBER 3, 1997
COPYRIGHT 1997 BY:

LEE SURVEYING & MAPPING CO., INC.
117 North Madriver Street
BELLEFONTAINE, OHIO 43311
(937) 593-7335

ORIGINAL STAMP IN GREEN

INDEXED ON MAP
1050 7P

2 WORKING DAYS
BEFORE YOU DIG
CALL TOLL FREE 800-362-2764
OHIO UTILITIES PROTECTION SERVICE.

REC'D 1-9-98 SML/OKV



Lee Surveying and Mapping Co., Inc.



Farm Surveys • Lot Surveys • Topography • Subdivisions • Construction Layout

117 NORTH MADRIVER STREET
BELLEFONTAINE, OHIO 43311

(937) 593-7335
FAX (937) 593-7444

REICHERT LTD 1.380 ACRES

Lying in Section 23, Town 7, Range 8, Washington Township, Logan County, Ohio.

Being out of the Reichert LTD original 78.733 acre tract as deeded and described in Official Record 330, Page 77 of the Logan County Records of Deeds and being more particularly described as follows:

Beginning at a stone found on the center-line of County Highway 54 at the intersection with the center-line of Township Road 215.

THENCE, with the center-line of County Highway 54 (60 feet wide), the following three (3) courses:

N 89°-57'-00" W, a distance of 808.31 feet to a MAG nail set.

With a curve to the right having a central angle of 45°-12'-52", a radius of 574.18 feet, an arc length of 453.11 feet, and a chord bearing N 67°-20'-36" W, a distance of 441.44 feet to a MAG nail set.

N 44°-44'-08" W, a distance of 161.88 feet to a MAG nail set at the TRUE POINT OF BEGINNING.

THENCE, with the center-line of County Highway 54, N 44°-44'-08" W, a distance of 271.82 feet to a MAG nail set.

THENCE, with a curve to the left having a central angle of 40°-54'-43", a radius of 572.67 feet, an arc length of 408.92 feet, and a chord bearing N 65°-10'-58" W, a distance of 400.28 feet to a 3/4 inch iron rod found.

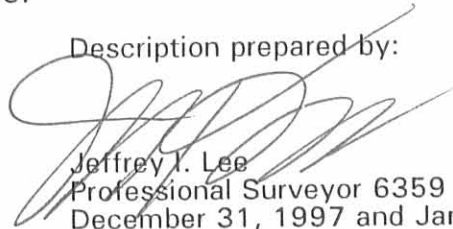
THENCE, with the south line of the Sue Ann Keegan original 157.340 acre tract (O.R. 84, Pg. 931, Parcel VII), S 85°-38'-51" E, a distance of 558.63 feet to a 5/8 inch iron rod set, passing a 5/8 inch iron rod set at 187.94 feet.

THENCE, with a west line of the Sue Ann Keegan 80.0 acre tract (O.R. 84, Pg. 931, Parcel IV), S 0°-25'-46" W, a distance of 318.71 feet to the point of beginning, passing a 5/8 inch iron rod set at 276.40 feet.

Containing 1.380 acres, of which 0.380 acre is within the right-of-way of County Highway 54.

The basis for bearings is the center-line of County Highway 54 at the intersection with the center-line of County Highway 215, being N 89°-57'-00" W, and all other bearings are from angles and distances measured in a field survey by Lee Surveying and Mapping Co., Inc. on October 3, 1997 and January 2, 1998.

Description prepared by:

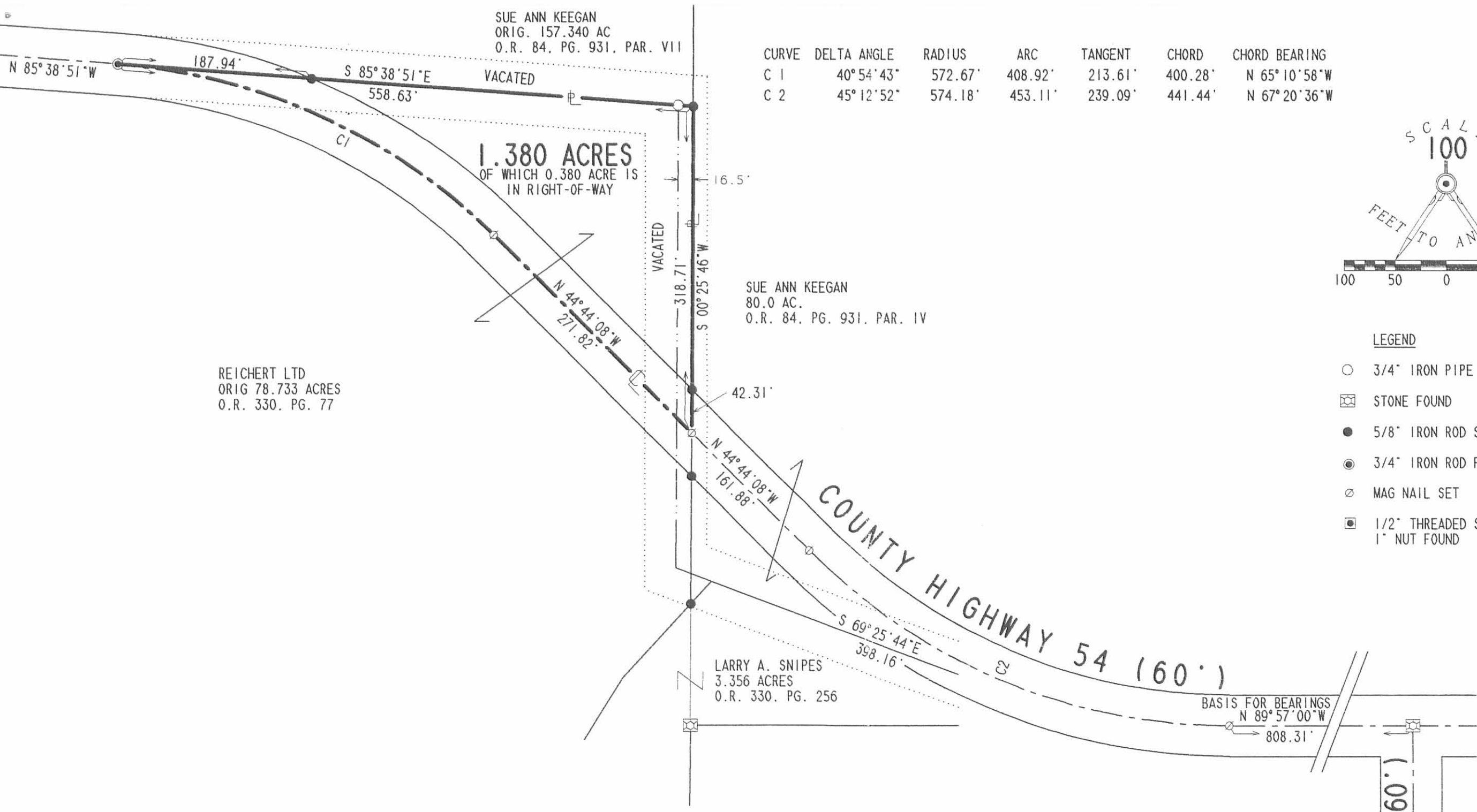

Jeffrey I. Lee
Professional Surveyor 6359
December 31, 1997 and January 2, 1998



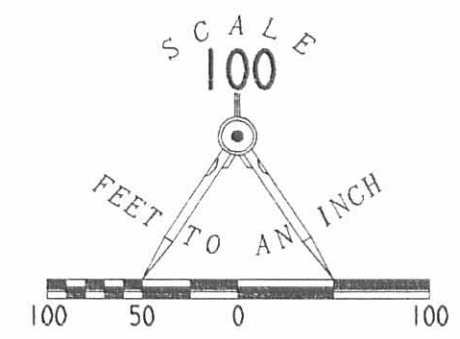
L-2308

INDEXED ON MAP
1050 8D

ORIGINAL STAMP IN GREEN



CURVE	DELTA ANGLE	RADIUS	ARC	TANGENT	CHORD	CHORD BEARING
C 1	40°54'43"	572.67'	408.92'	213.61'	400.28'	N 65°10'58"W
C 2	45°12'52"	574.18'	453.11'	239.09'	441.44'	N 67°20'36"W



- LEGEND**
- 3/4" IRON PIPE FOUND
 - ⊠ STONE FOUND
 - 5/8" IRON ROD SET
 - ⊙ 3/4" IRON ROD FOUND
 - ⊗ MAG NAIL SET
 - ⊠ 1/2" THREADED STUD WITH 1" NUT FOUND

**SURVEY OF 1.380 ACRE OUT
 OF THE REICHERT LTD
 ORIGINAL 78.733 ACRE TRACT
 OFFICIAL RECORD 330, PAGE 77
 SECTION 23, TOWN 7, RANGE 8
 WASHINGTON TOWNSHIP
 LOGAN COUNTY, OHIO**



ORIGINAL STAMP IN GREEN

INDEXED ON MAP
1050 8P

REFERENCES
 LOGAN COUNTY ENGINEER'S FILES:
 "X" 54A
 FIELD BOOK 692, PAGES 15, 16, 61
 FIELD BOOK 571, PAGE 43

2 WORKING DAYS
BEFORE YOU DIG

CALL TOLL FREE **800-362-2764**
 OHIO UTILITIES PROTECTION SERVICE

SURVEYED BY:

 JEFFREY L. LEE
 PROFESSIONAL SURVEYOR 6359
 OCTOBER 3, 1997 & JANUARY 2, 1998
 COPYRIGHT 1997 BY:

LEE SURVEYING & MAPPING CO., INC.
 117 North Madriver Street
 BELLEFONTAINE, OHIO 43311
 (937) 593-7335
 D 318 MREICH2 (MREICH.DAT) L-2308-3