

Road No. 91

Stakes Placed 30' from E for a 60' Road.

All measurements direct to
P.I. No. Curves staked.

April - 24 - 1931 Stakes. Moved 25' from E
for a 50' Road. Pike Record $\left. \begin{matrix} 50' \\ 40' \end{matrix} \right\}$

See Report in Drawer Road # 91

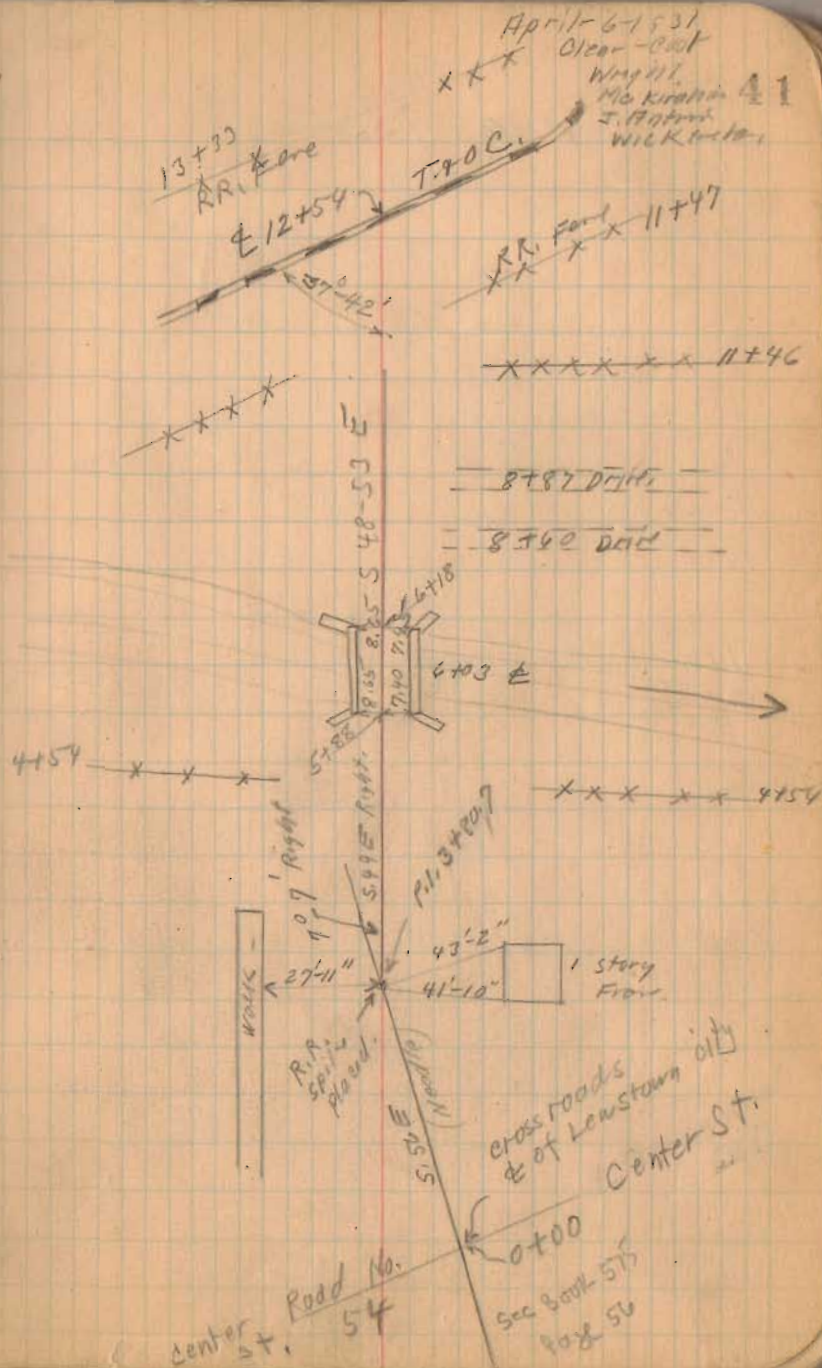
Comm. Journal 2 Page 74

Comm. Journal 9 Page 236

See Pike Record, Book 4 Page 245

50' except 3400' on E. end.

1295
INDEXED ON MAP



Road No. 91

17+12

Resurced for R/W Posts

Oct. 1-1937

Clear - Warm

F. Wright

G. Wilgus

W.R. Wright

16+49.7

14+00

11+75

Right Only

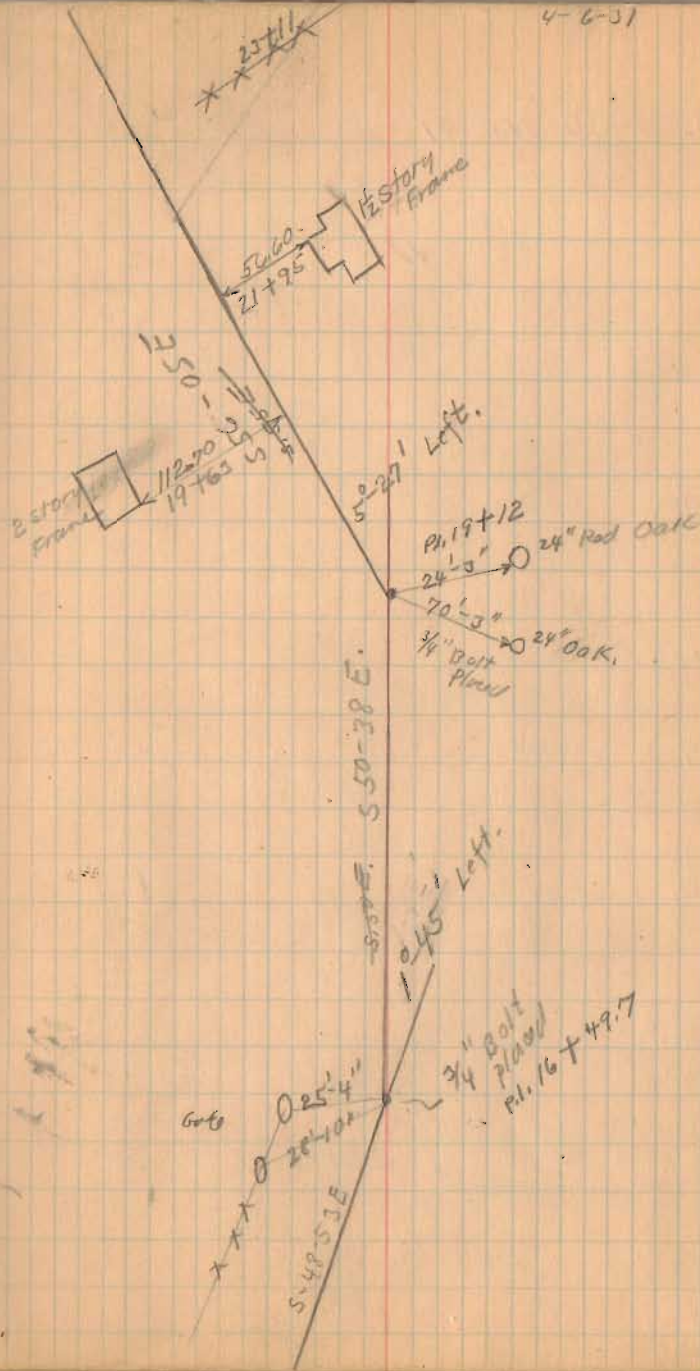
9+00

5+00

for R/W Posts

1295
INDEXED ON MAP

4-6-31



Road No. 91

37+00

34+00

31+17

25.64 on skew

26+97

25.82 on skew

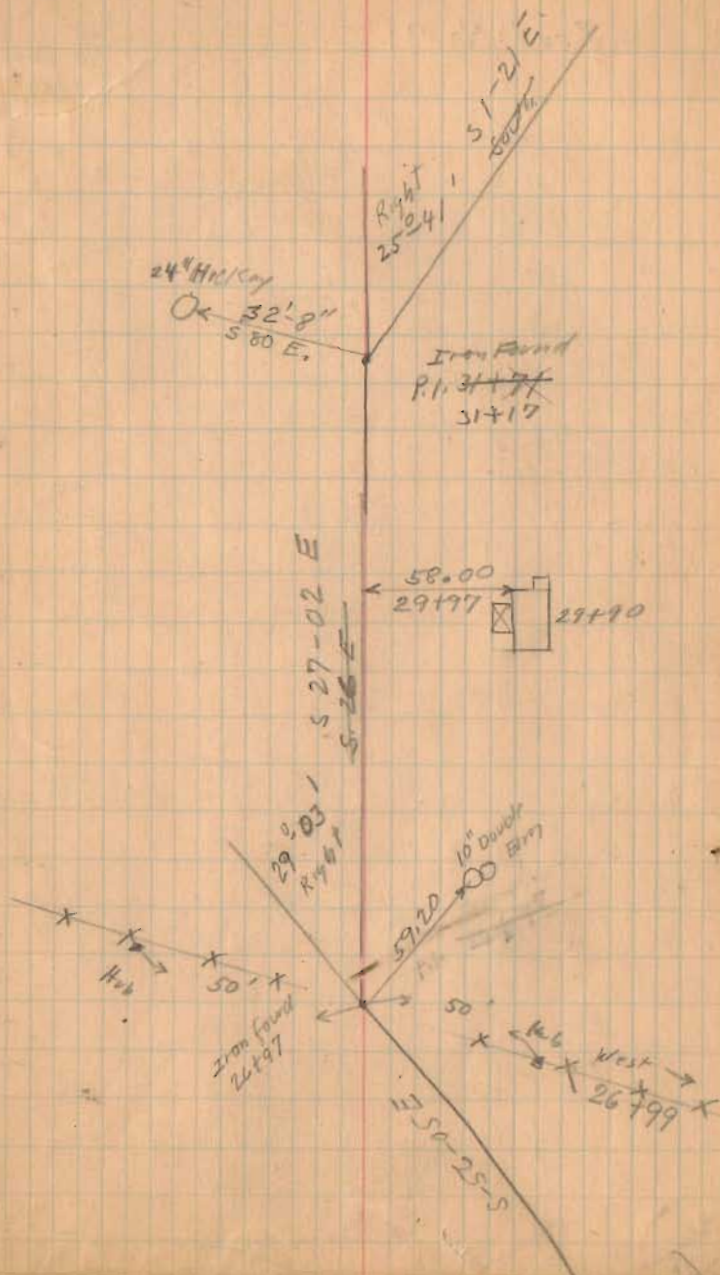
22+50

1295

INDEXED ON MAP

4-6-31

43



Road No. 91

55+00

left only

52+00

48+00

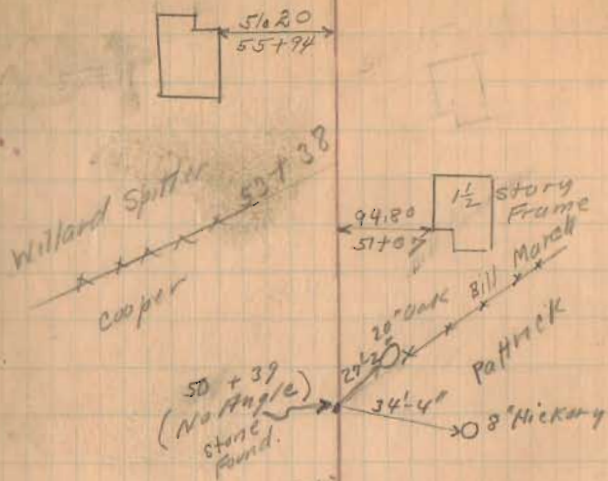
44+00

40+00

1295
INDEXED ON MAP

4-6-31

44



Road No. 91

See Book 588 - Page 60

$P.I. = 63+35.4$
 $T = 164.6$
 $R = 250.90$
 $\Delta = 23^\circ - 0'$
 $E = 45.82$
 $P.C. = 61+70.8$
 $P.T. = 65+00$
 Measured
 Through P.I.
 $\Delta = 66^\circ - 32'$

61+00

58+44.1

56+00

Right only

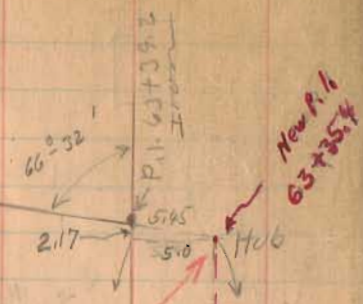
INDEXED ON

129

P.I. Stone
57+28

$P.I. = 57+20.7$
 $T = 120.70$
 $R = 307.72$
 $\Delta = 18^\circ - 42'$
 $E = 22.82$
 $P.C. = 56+00$
 $P.T. = 58+44.1$
 Measured
 Through P.I.
 $\Delta = 42^\circ - 50'$

New P.I.
57+20.7



4-6-31

22.685
 $5.86 E$

$66^\circ 32'$ Left
 No. 33
 County Road

$P.T. 65+00$
 $T = 164.6$
 $\Delta = 66^\circ 32'$
 But Placed



This is Moved.
 5' To Right
 (West) see
 New stations
 on opposite
 Page.

5' 20-40 E.
 520 E

~~$P.C. = 56+00$
 $T = 120.7$
 $\Delta = 18^\circ - 42'$
 $E = 22.82$~~

8 Hickory
 53.5
 91.9
 42-50
 42-50
 5.0' at right to road
 5.0' at right to road

Stone Found.
 P.I. 57+28



Road No. 91

85700

80+00

90° Transit from Backsite

77+00

Trap line

75700

Nail & Road.

70+00

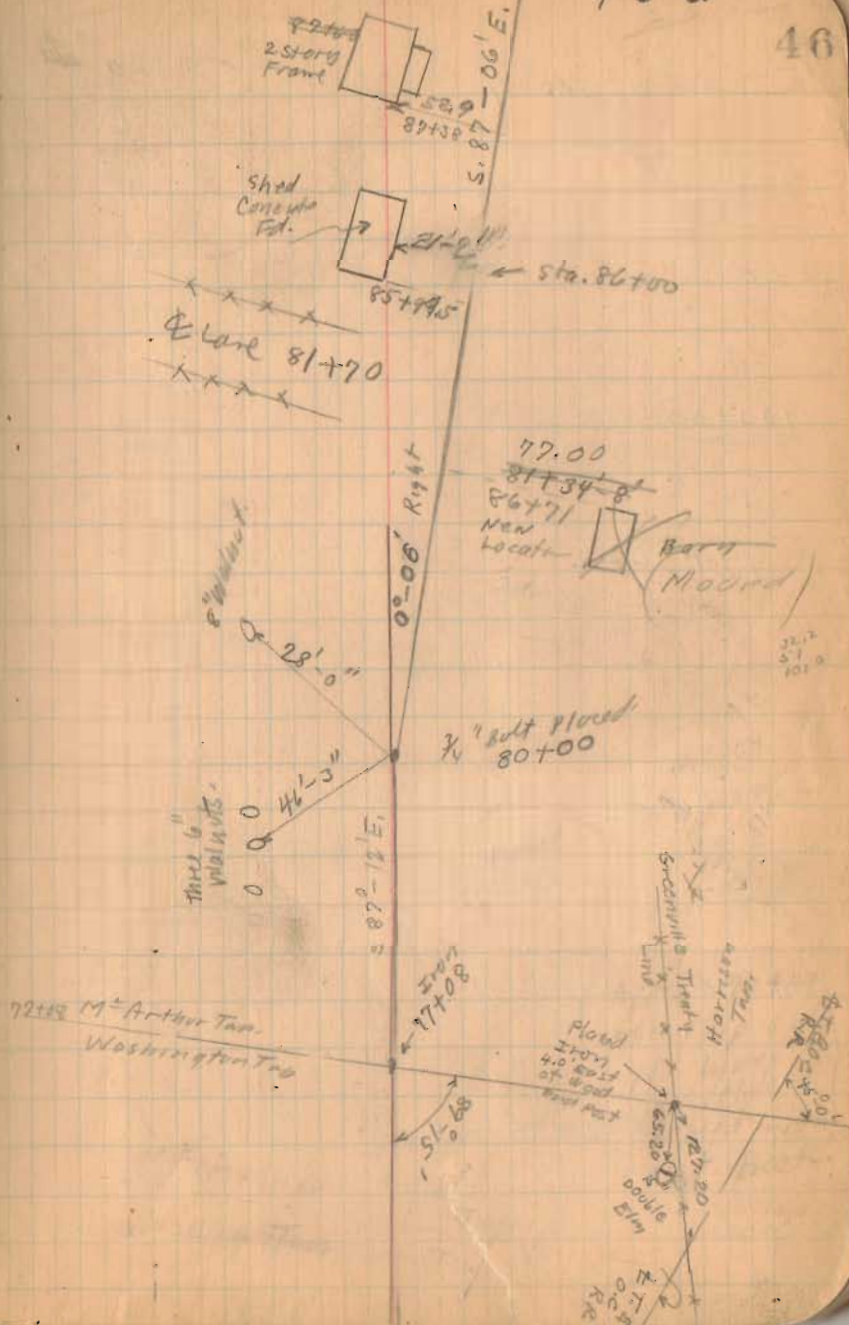
65+00

1295

INDEXED ON MAP

4-6-31

46



Road No. 91

110+00

106+00

103+00

99+00

95+25

90+00

1195
INDEXED ON MAP

Sta. 106+00
Angle To R44t
10-18"
3/4 Bolt Head.

April-13-1951

Fine day

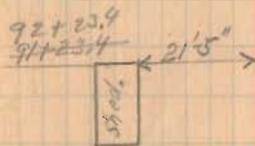
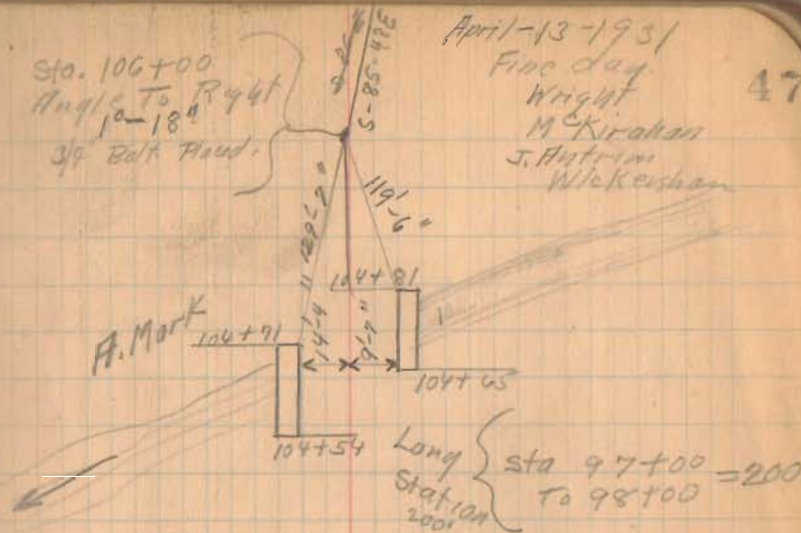
Wright

M. Kirahan

J. Antrim

Wickenshan

47



5.87-0.6 E.

Road No. 91

135+00

131+00

Notes by Inskeok
Book 618 Page 23

128+00

123+00

118+00

90° from Backset.

114+00

INDEXED ON MAP

1295

4-13-31

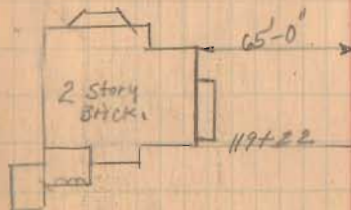
48

134718 Lane To Horse

134+07.9 Road No. 31

Store 130+49.50
Site at 12" Below
Surface
Angle to left
0°-21'

130+9.5
11 700
1249.5
1248.2



10" Elm

34.4
~~36.7~~

S.85-48E

Sta. 118+00
Placed 3/4" Bolt
Angle 1°-25'
To Left

S.87°-34'E

S.87°-10'E

Road No. 31

40'-10"

49'-7"

78'-10"

80'-10"

85'-8"

50' ft
Maple

12" Hickory

2 Story
Frame

Road No. 91

152+00

148+00

143+16.5

25.16 on stake

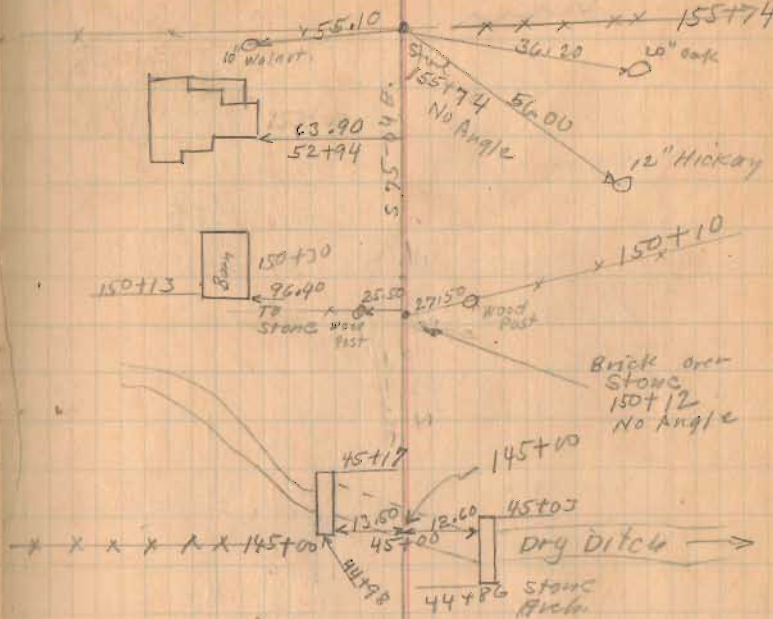
139+00

Nail &

1295
INDEXED ON MAP

413-31

x x x x x 156+10 49
old Lane



Road No 91

Distance 172+85.3 to 178+22.5

chained 528.3' Angle at
178+22.5 R 90-44'

C.A. 1 7/21/36

No witness stakes
found Set new stakes as
shown on sketch on opp page

78.27
 44481
 5/1/36

178+14 25.11 on skem

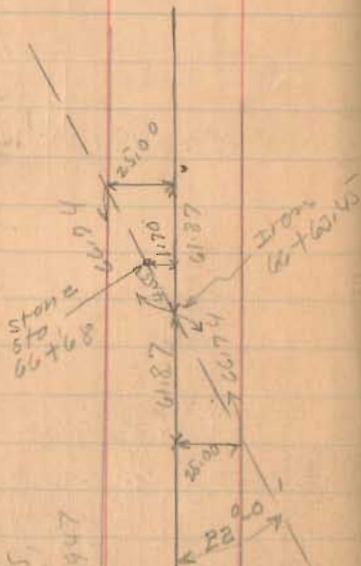
175+50

173+09.5 25.06 on skem

169+00

162+00

157+00



Tam G.P. 2175
 C.P. 68.5
 See G.P. 2160 947

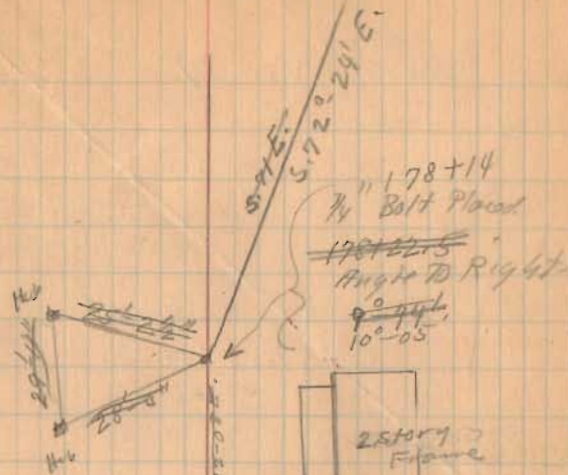
174+90
 8+10
 166+774

INDEXED ON MAP

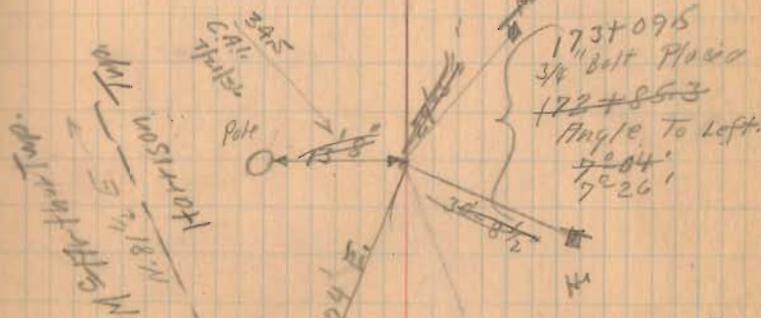
1295

4-13-31

50



174+90 County Road No. 46



166+774
 See Cont.
 C.P. 68.5
 Book D Vol 1

cut 68 Stone
 stone 1.70 North of E
 See Detail
 opposite
 opp

Road No. 91

Notes by Inskock
Book 618 Page 25

195+00

190+00

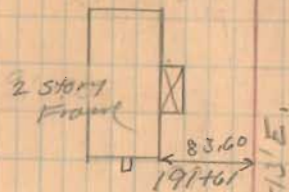
185+00

184+00

INDEXED ON MAP

4-13-31
fine day
Bridge
Meharders
Antrim
Wickersham

51



S-69-11E.

186 to 187
short station
91.5 feet

184+40.5
3/4" Bolt. Placed
P.I. 184+44.4
Angle to Right
3° 11"

P. Williams
15" Walnut

shields
Elev. 100.537
22.0
Flock

County Road No 46

30" Oak.

Flock

S-72-24E.

Road No. 91

227+00

222+00

217+00

212+86.75

208+00

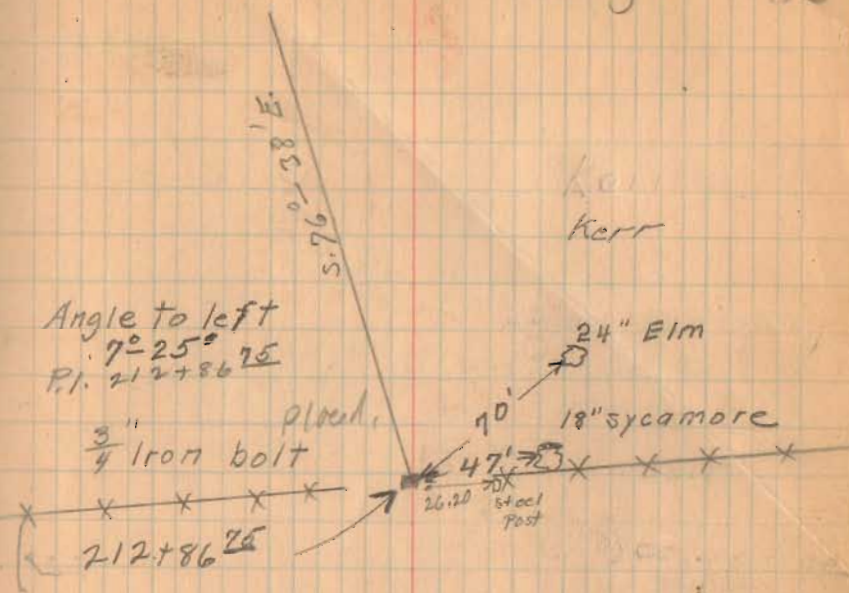
204+00

200+00

1195
INDEXED ON MAP

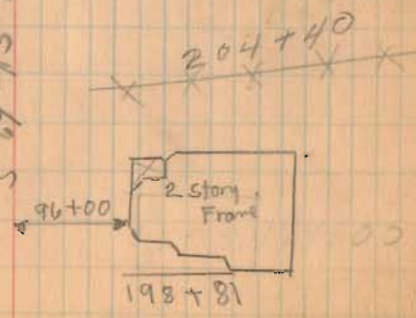
4-14-31
Bridge.

52



3x3 Stone box
poor condition

5.69°-13'E



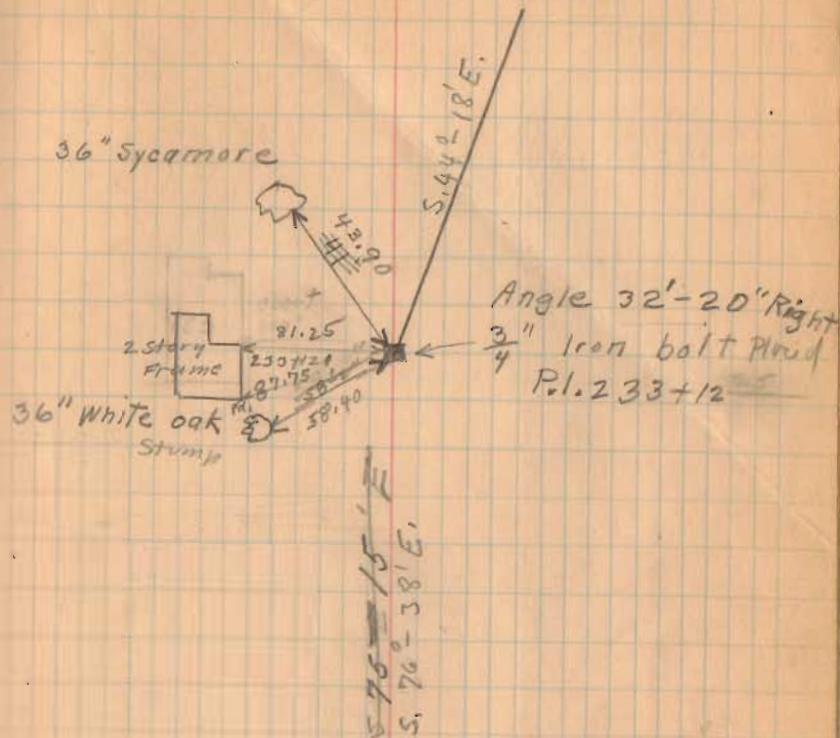
Road No. 91

232+00

INDEXED ON MAP

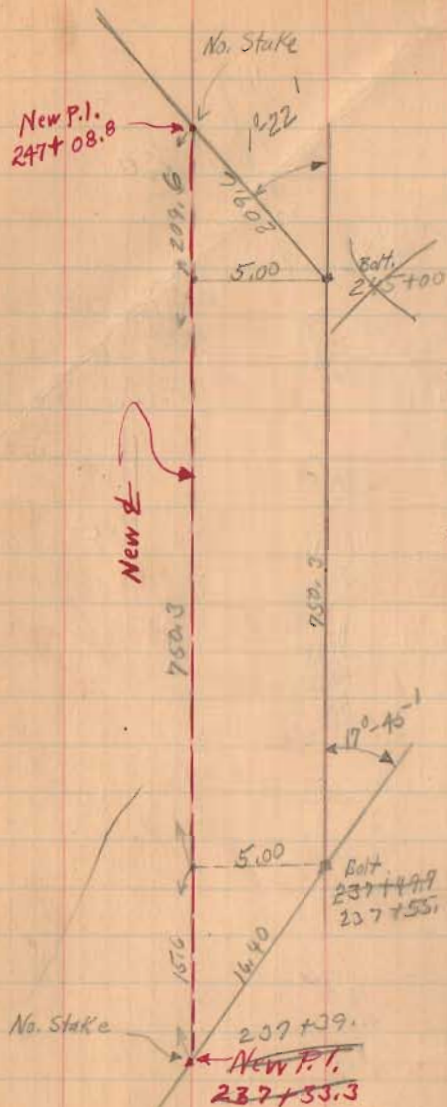
H-14-31

53



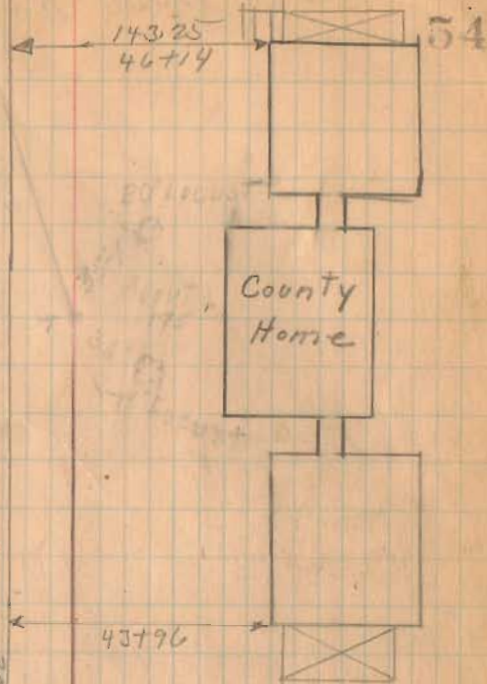
224+96

Co. Road No. 91



1295
INDEXED ON MAP

4-14-31



This is Moored 5'
Left. (North) See New
Stations on opposite
page

Angle $17^{\circ}45'$
Left
P.I. $237+49.7$
 $3/4"$ Bolt Head

Logan County
F. Carr
S. 44-18 E



J.A. Keer

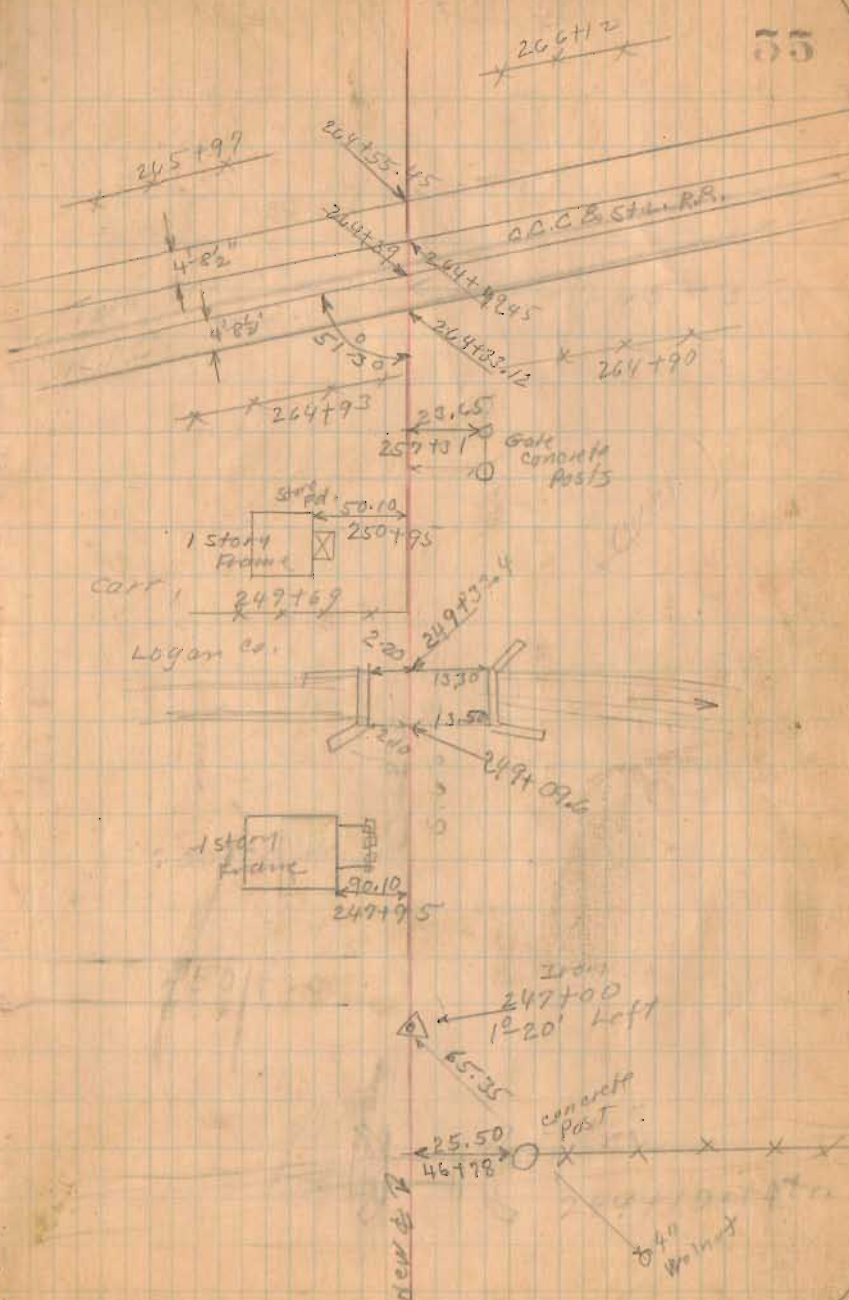
Co. Road No. 91



INDEXED ON MAP

4-14-31

55



Co. Road No 91

274+76
36

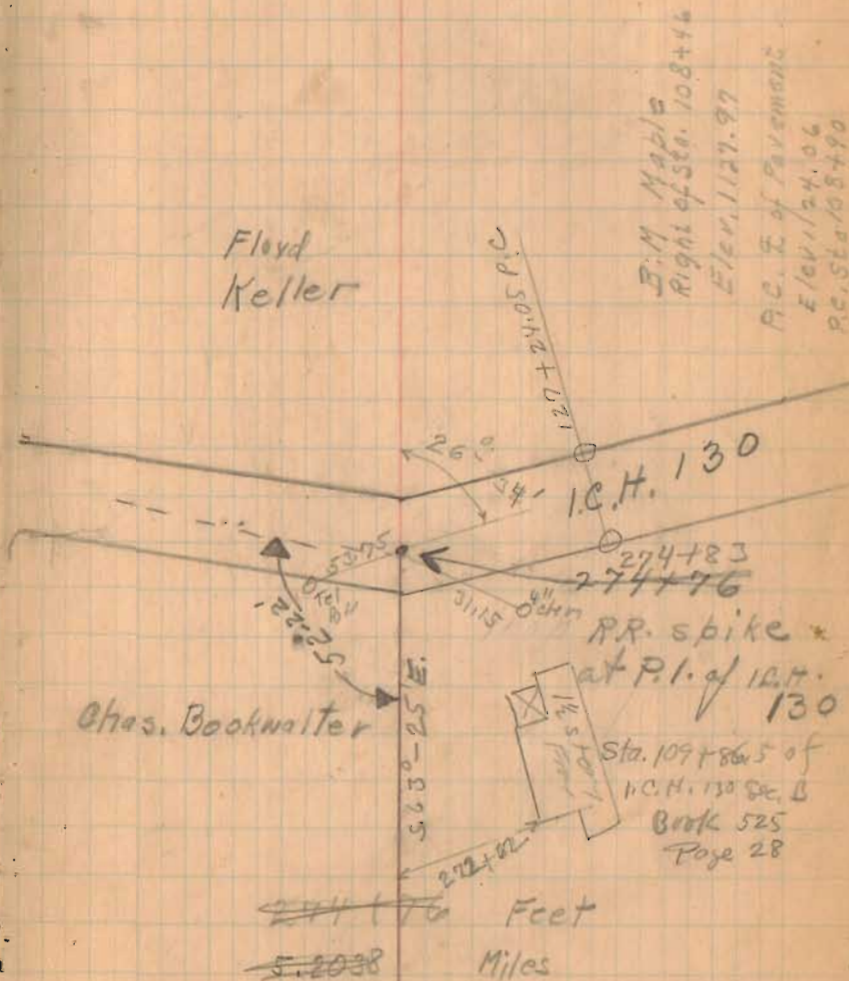
248+76

INDEX MAP

1295

11-14-31

58



7-21-36

C.A.I.
J.H.I.
R. Cockerell
W. Hudson

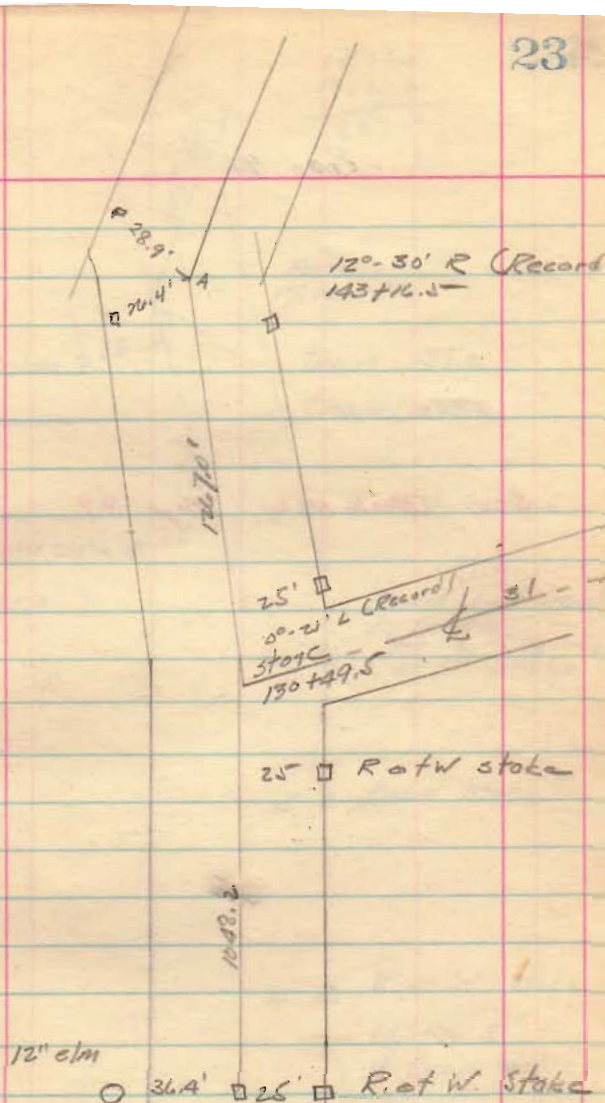
Road 91

At point distances from
hubs used for $\frac{1}{2}$

See Book 552 Page 48

INDEXED ON MAP

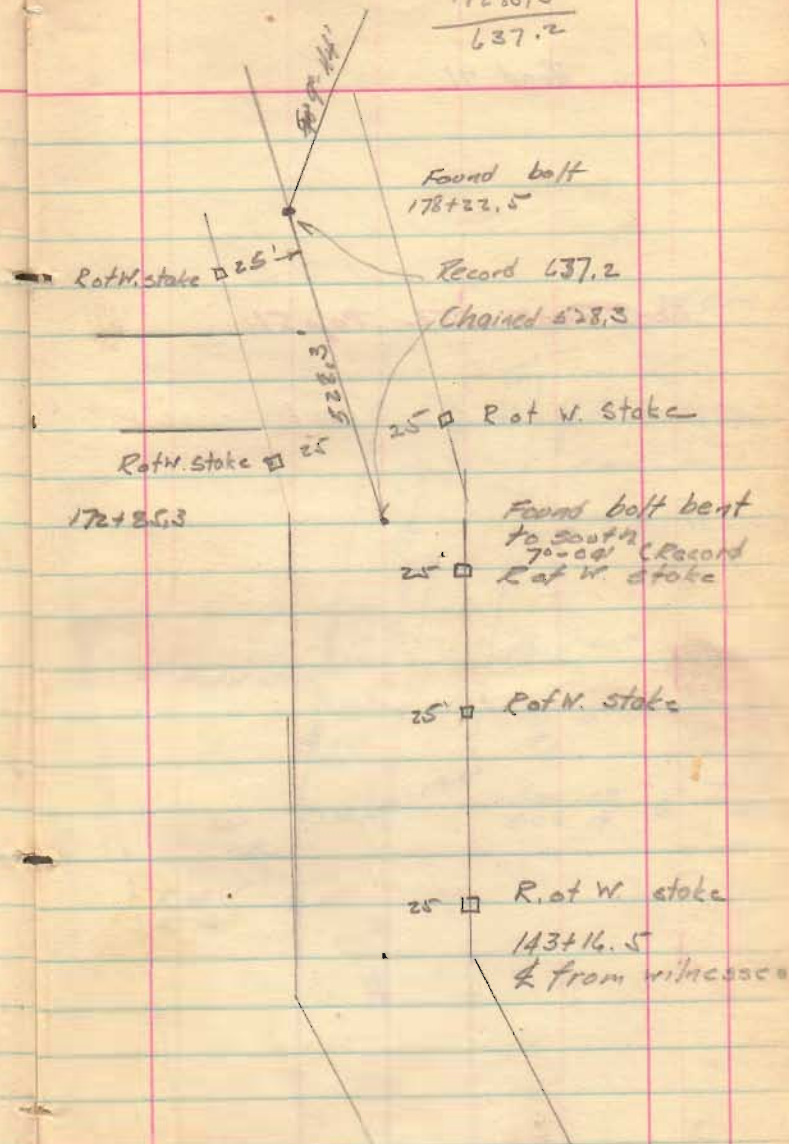
1295



Road 91

$$\begin{array}{r} 17822.5 \\ 17285.3 \\ \hline 637.2 \end{array}$$

See Book 552 Page 49



Road 91

see Book 552 Page 51

