

June 1, 1933  
Wright  
Bill Wright

Bailey Survey  
Washington Twp. W.M.S. { 9946  
9925  
10121

See Book 390 Page 4  
see Book 480 Page 18  
see Drawing J-27

A - Iron Pipe See Witness Book 480 Page 18

B - Temporary stake 100' from A

C " " 100 " B

D " " 50 " C

E " " 50 " C

F " " 300 " A

ABCDE Random Line.

Note 15' of Center St is  
in Dennis Pined. Started at  
A for a definite Iron corner.

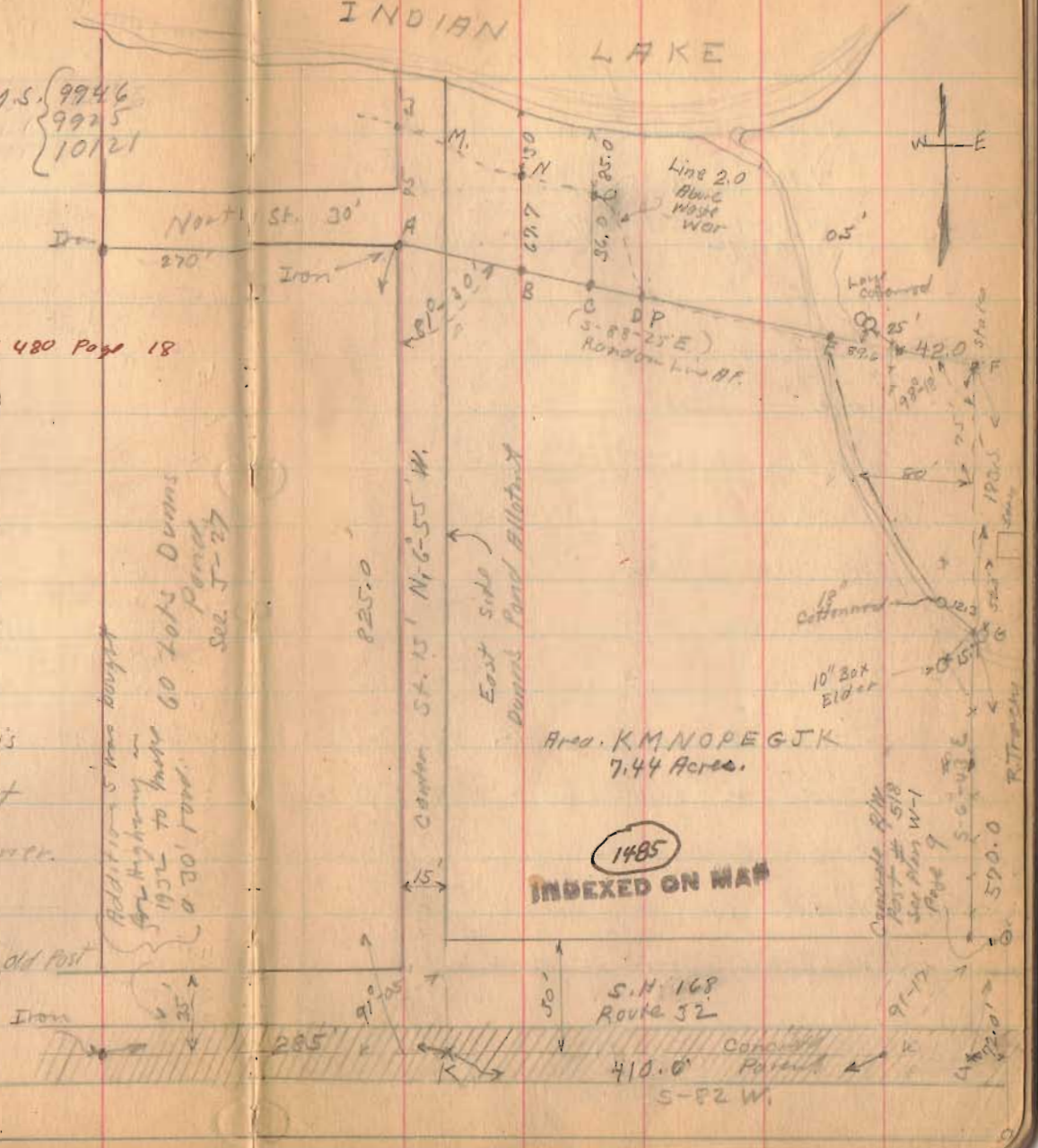
F - stake

G - 1" Iron 30" long west side of old Post

H - stake 150' s. of G

J - Chisel Cross in concrete

K. chisel cross in concrete



Additional 5 acres bought  
 for highway in  
 1952 to make 60 Lots Dennis  
 Pined.  
 See J-27

Concrete Pile  
 Post # 518  
 See Plan W-1  
 Page 9  
 91-17  
 590.0  
 R. Tracy

1933  
Bailey Survey.

The following described land in V.M.S. (8925 Washington  
Township, Logan County Ohio. (8948  
(10121

Beginning at a cross in the center of concrete pavement S.H. 168 (also known as State Route #32) said cross being the S.E. corner of Dunn's Pond Allotment; thence N.6° 55' W. with the East side of said Dunn's Pond Allotment 900.0 feet to a point which is two feet higher than water of Indian Lake and said point being about 25 feet South of water's edge; thence in an Easterly direction and following a contour line which is two (2) feet higher than Indian Lake (Spillway level) to an iron and old post in the West line of R.Tracey's 6.25 acre tract, thence S.6° 43' E. with said Tracey's West line, 570.0 feet to a cross in the center of a concrete pavement (S.H. 168 State Route 32) thence with center of said pavement S.82° 0' W. 410.0 feet to place of beginning, said tract containing 7.44 acres more or less and being the same tract as surveyed June 1933 as shown and recorded in Book 570, Page 35 of Logan County Surveyor's office.

1485 ID

INDEXED ON MAP

F.B. 570, Pg 35

Bailey Survey  
Washington Twp. I.M.S. { 9946  
9925  
10121

- See Book 390 Page 4
- See Book 480 Page 18
- See Drawing J-27
- A - Iron pipe See Witness Book 480 Page 18
- B - Temporary stake 100' from A
- C " " 100 " B
- D " " 50 " C
- E " " 50 " C
- F " " 300 " A

ABCDE Random Line.  
Note 15' of center st is  
in Dunn's Point. starts at  
A for a definite Iron corner.  
F - stake  
G - 1" Iron 36" long west side of old Post  
H - stake 150' s. of G  
J - Chisel Cross in concrete  
K - chisel cross in concrete

Additional info bought  
for Highway in  
1952 to make  
a 30' road.  
GO Lots Dunn's  
Point  
see J-27

