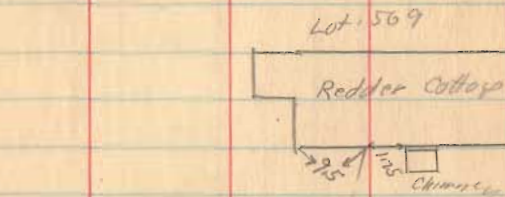
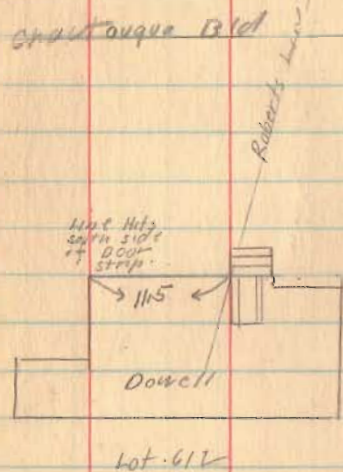


Roberts Line
Washington Tap.



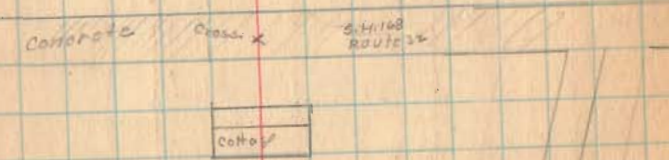
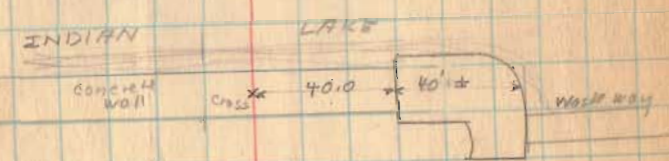
Chautauque Blvd



(1689)
INDEXED ON MAP

April - 23 - 1905
Nico Dwy
F. Wright
E. Cone
G. Wilgus

31



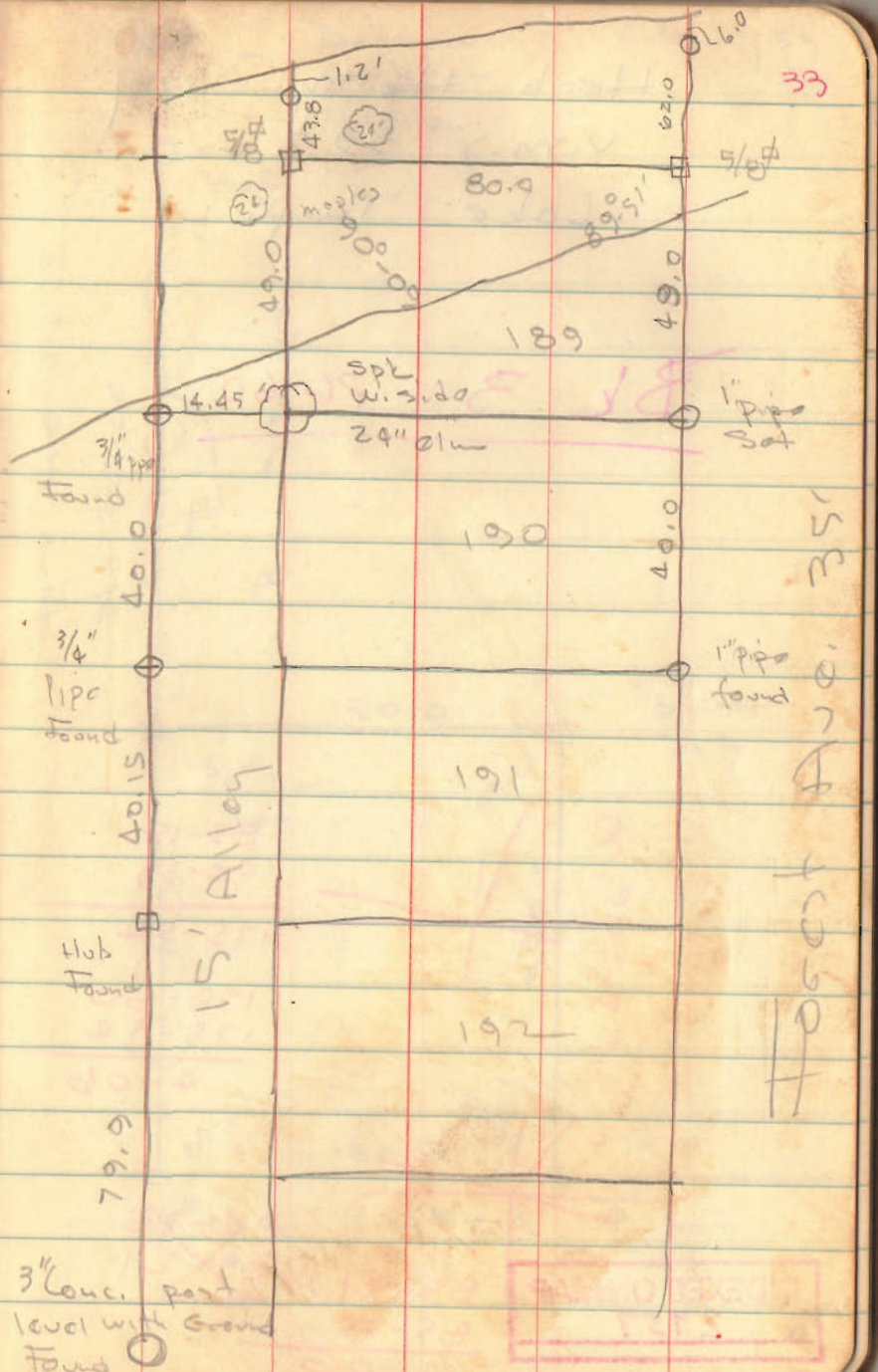
Survey of lot # 189
Orchard Isl

Dadson - Gooslin
July 18, 1959

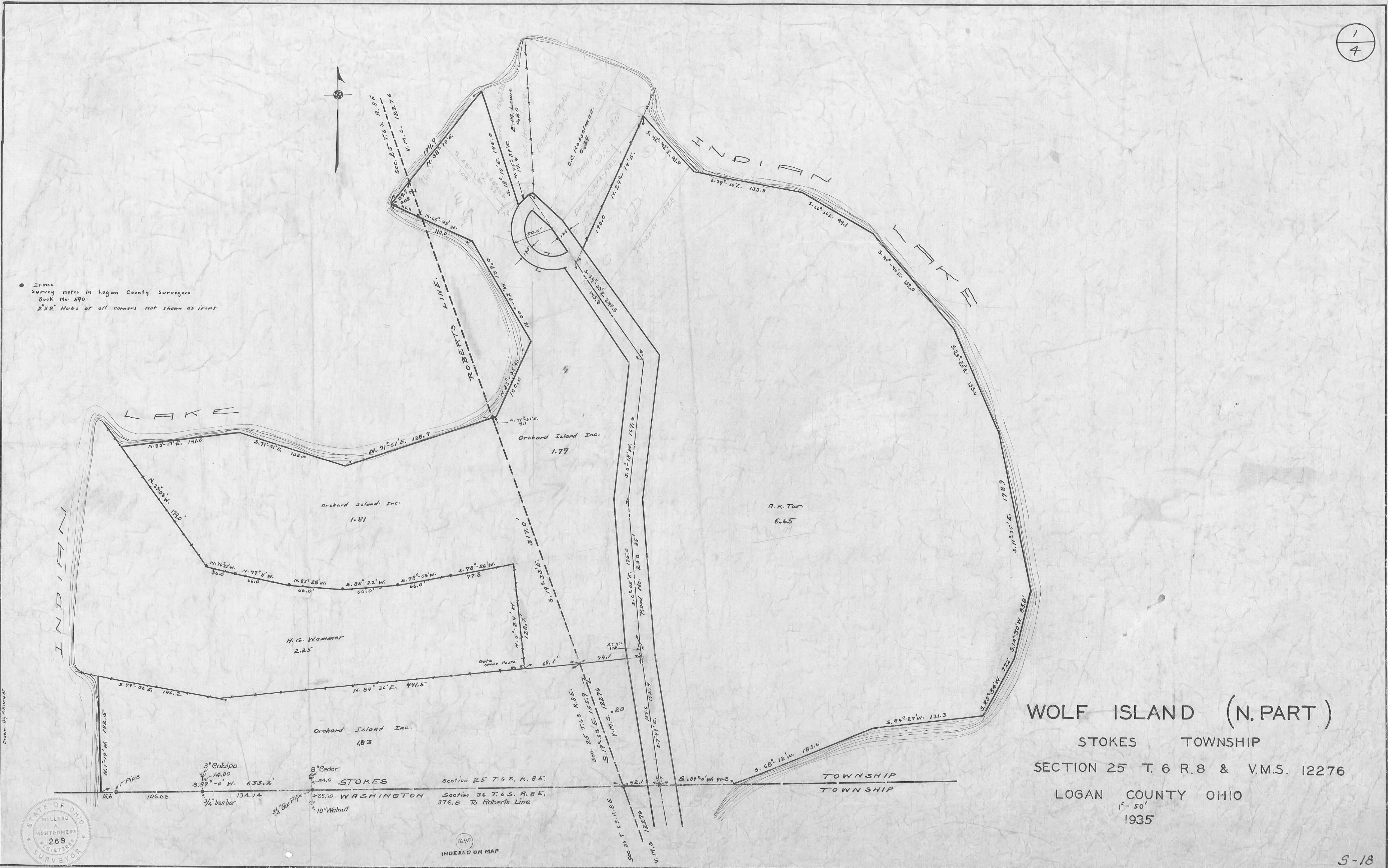
See Co. Eng. Bk # 590 pg. 36

For Andrew F. Woerl
Box 101
Russells Point

INDEXED ON MAP
1649



• Irons
Survey notes in Logan County Surveyors
Book No. 590
"XZ" Hubs at all corners not shown as irons



WOLF ISLAND (N. PART)

STOKES TOWNSHIP

SECTION 25 T. 6 R. 8 & V.M.S. 12276

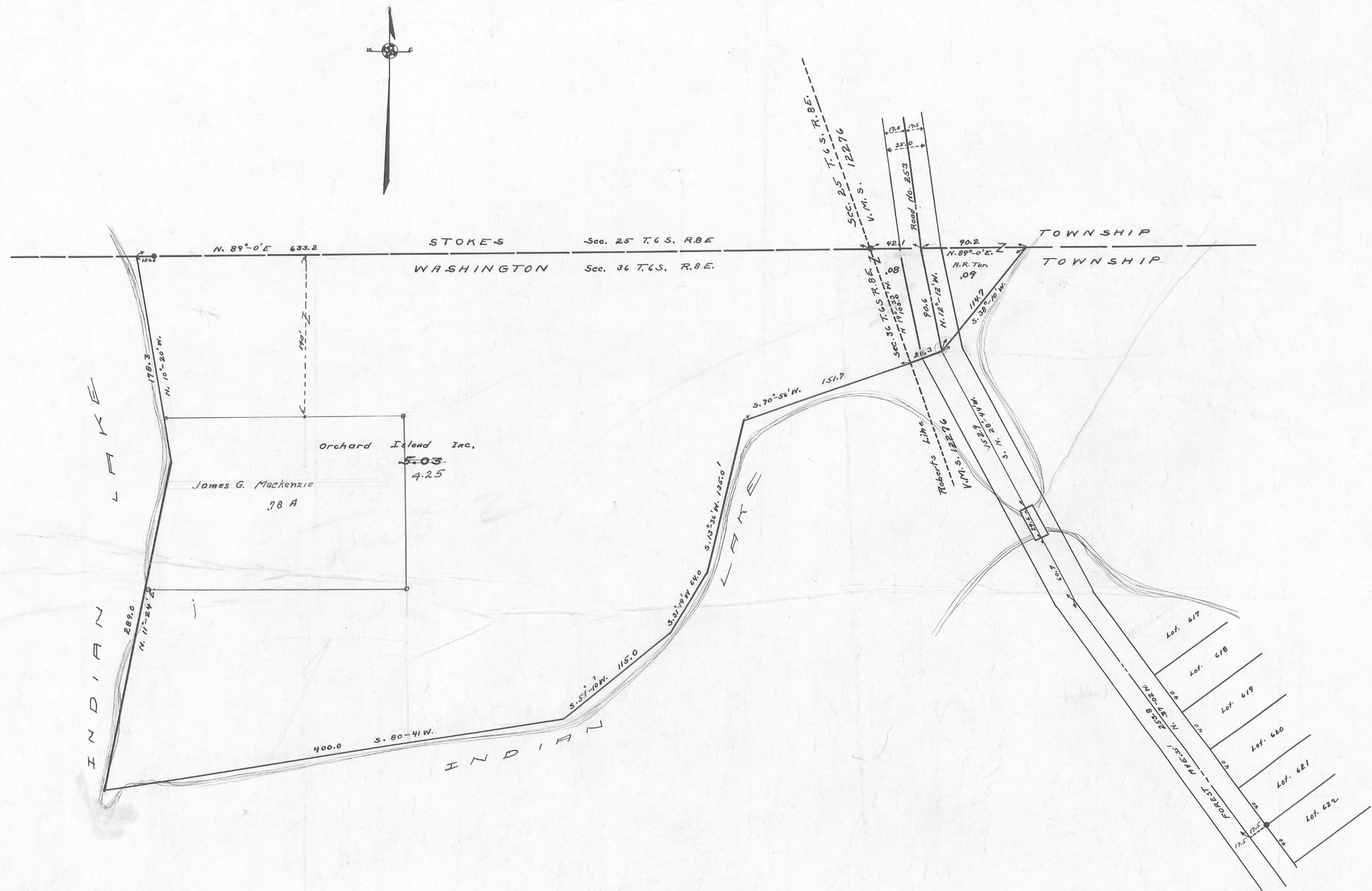
LOGAN COUNTY OHIO

1" = 50'

1935



INDEXED ON MAP

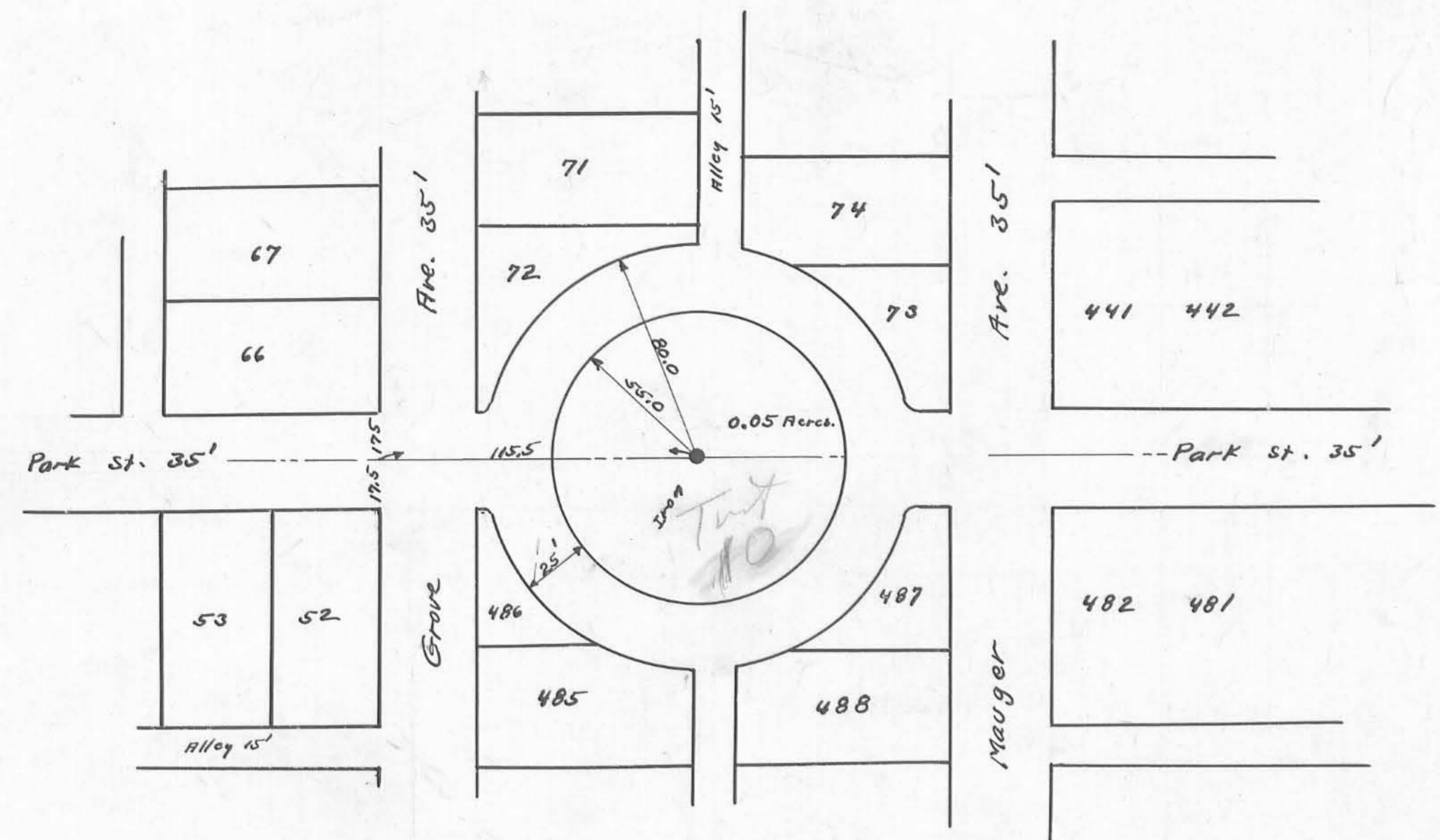


● Irons.
 Survey notes Logan County
 Surveyors Book No. 590.
 2"x2" Hubs at all corners not shown with irons

164B
 INDEXED ON MAP

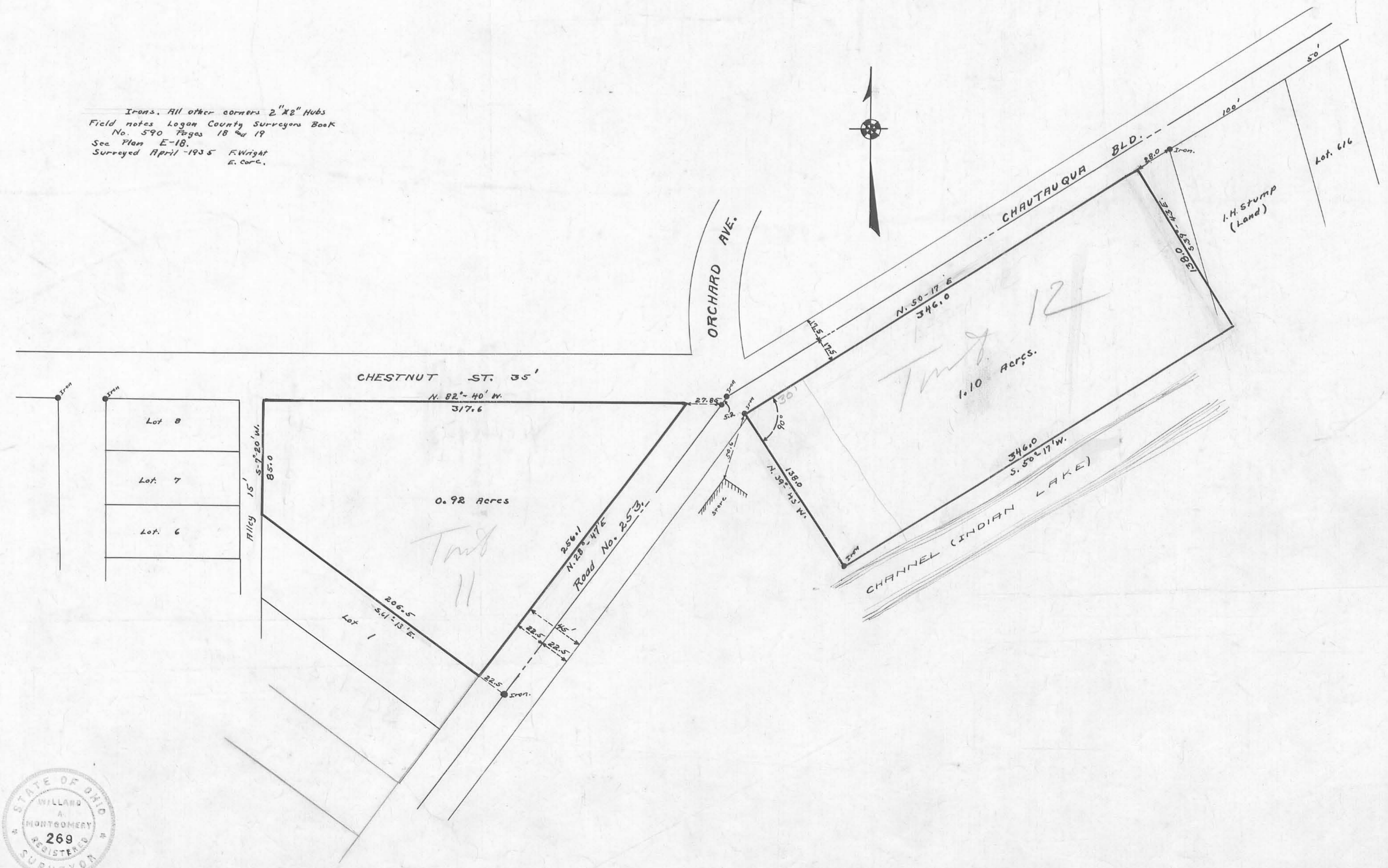
WOLF ISLAND (S. PART)
 WASHINGTON TOWNSHIP
 SECTION 36 T. 6 R. 8 & V.M.S. 12276
 LOGAN COUNTY OHIO
 1" = 50'
 1935





PARK NEAR LOT 52

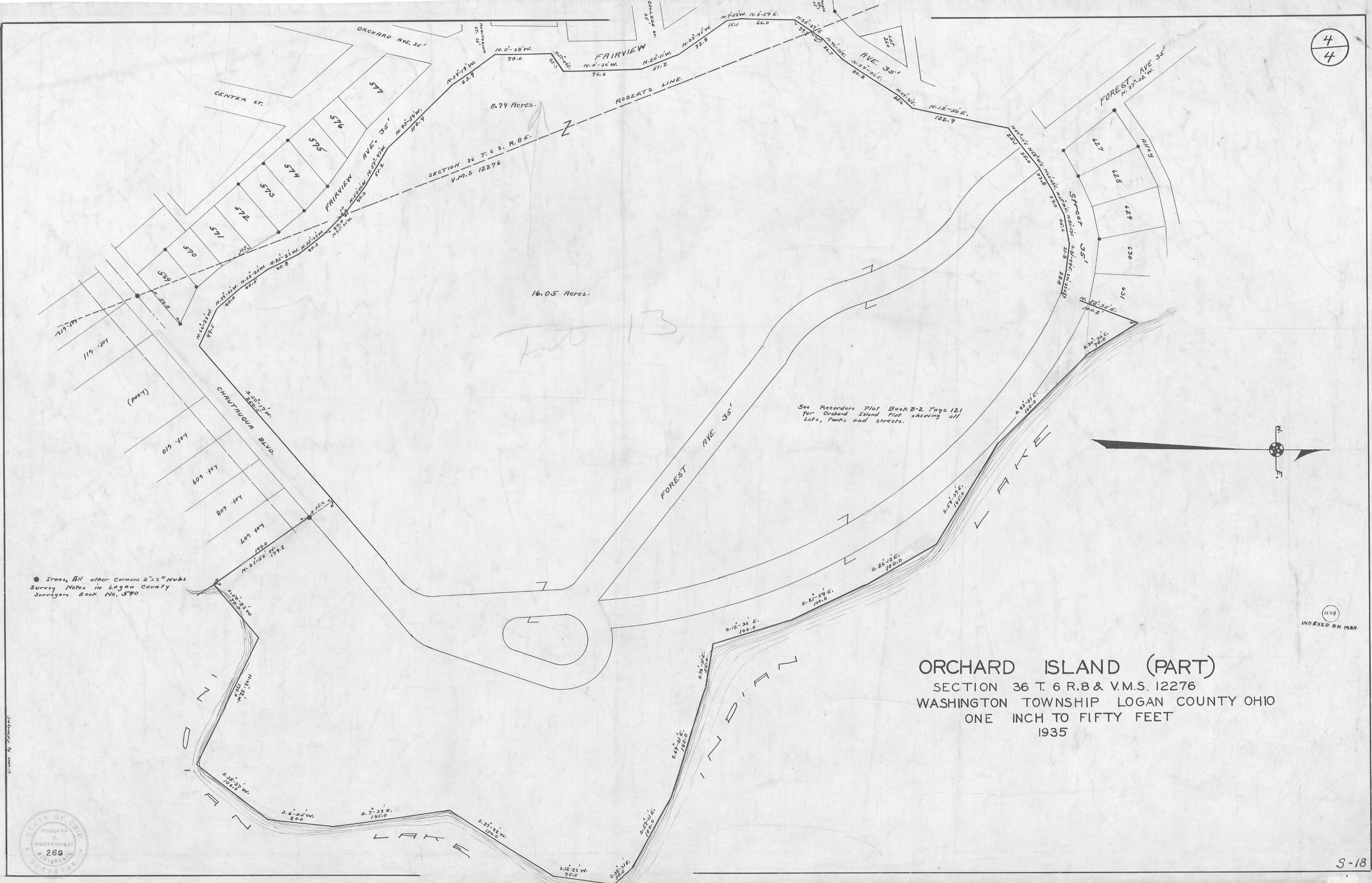
Irons. All other corners 2" X 2" Hubs
 Field notes Logan County Surveyors Book
 No. 590 Pages 18 and 19
 See Plan E-18.
 Surveyed April 1935 E. Wright
 E. Corc.



ORCHARD ISLAND (PART)
 SECTION 36 TOWN 6 RANGE 8
 WASHINGTON TOWNSHIP LOGAN COUNTY OHIO
 ONE INCH TO FIFTY FEET
 1935

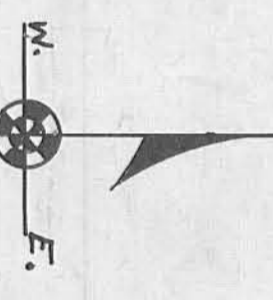
1648
 INDEXED ON MAP





● Irons, All other Corners 2"x2" Hubs
 Survey Notes in Logan County
 Surveyors Book No. 590

See Resorders Plat Book B-2 Page 121
 for Orchard Island Plat showing all
 Lots, Parks and Streets.



1448
 INDEXED ON MAP

ORCHARD ISLAND (PART)
 SECTION 36 T. 6 R. 8 & V.M.S. 12276
 WASHINGTON TOWNSHIP LOGAN COUNTY OHIO
 ONE INCH TO FIFTY FEET
 1935

