

$$\begin{array}{r} 42.7 \\ 36 \\ \hline 256.2 \\ 128.1 \\ \hline 53.72 \\ 20 \\ \hline 173.72 \\ 32 \\ 40 \\ \hline 36 \end{array}$$

Survey for W.C. Huston
 S. 1/2 T. 2 R. 14
 Washington Prop.
 3-5-70

Ground stone at N.E. cor. Huston
 farm as called in deed measure
 3.85 W. 5.04 chains to post at
 angle.

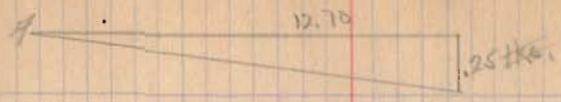
Set transit in N of N face of
 post at angle with B.S. = 10° - 11.
 of stone at Huston N.E. corner
 Reflect L 2° - 22' Read S 82 3/4 W.

28+13 1/2 County Road
 40+83 to small walnut near

N.W. corner S. 82 3/4 W in road
 about 100 W. of where in cross road.
 Six feet 10 links south of it
 10' walnut tree near Section line
 Set stake to post of 10' post line
 at 20 ft line.

Stake at 10' walnut tree
 and chain S 11 3/4 W on 1/2 road
 line to bridge at 3.30
 at 3700 S line of bridge

Check a stone at a but ground paper so hard
 make it determine whether or not it is correct.

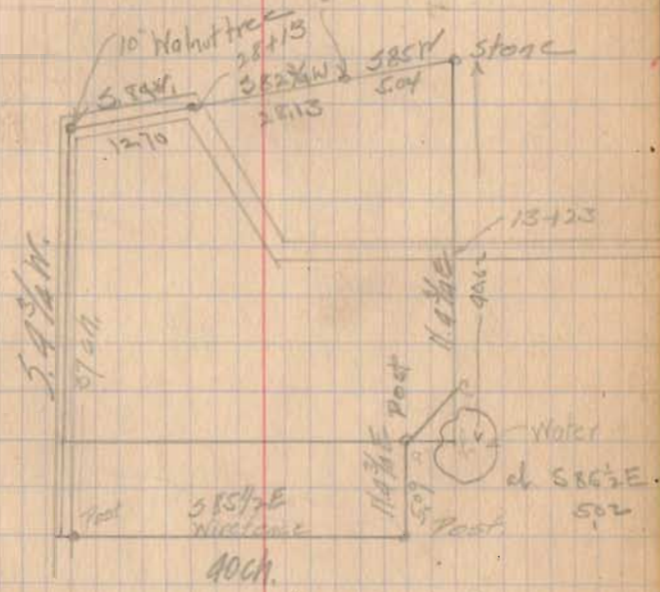


12

$$\begin{array}{r} 40.83 \\ 21.13 \\ \hline 12.70 \end{array}$$

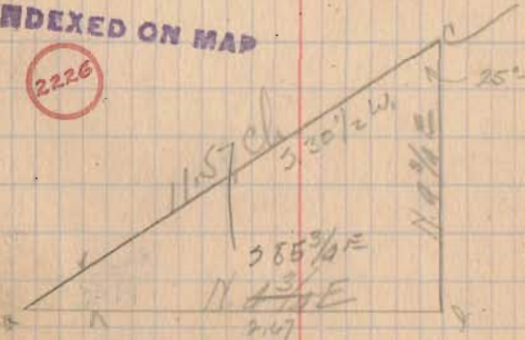
$$\text{Top } A = \frac{.25}{12.70} = .01969$$

$$A = 10 - 81$$



INDEXED ON MAP

2226



143 A =
 11.120
 CH.

$$11.57 \cos 25^\circ - 45' = 11.57 \times .9007 = 10.42$$

$$11.57 \sin 25^\circ - 45' = 11.57 \times .4245 = 5.02$$

3-5-28.

Start apparent center Creek -
 Road and run S. 15 1/2 E.
 at 25 links pass road fence
 at 21+75 " " chain 6'
 at 10+6 fence. Post at
 40 chains, third post at
 into end of this line for line
 Set 10' stake
 Hence along a wire fence
 N. 4 3/4 E 5 chains 9 links to
 post and stone.

Start at C and measure
 at 13+23 cross E fence
 30+75 also pt NE corner
 Offset 10 ft at S end
 and 20 ft. at N end and
 run N. 4 1/2 E corrected making N 4 3/4 E

Call Call Call



15/30.2 (2.0133)
 30
 20
 15
 50
 15