

REC'D 9-29-95 SHY DL

LINDEN AVE. (25')

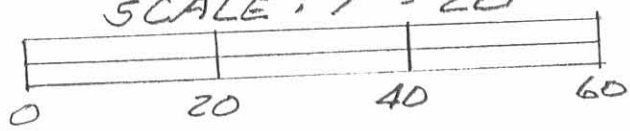


LEGEND:

- A = 1/2" PIPE FD
- B = 5/8" IRON BAR SET

SURVEY OF LOTS 108 & 119
 IN WATERBURY ALLOTMENT,
 WASHINGTON TOWNSHIP,
 LOGAN COUNTY, OHIO FOR
 SHARON DAVIS.

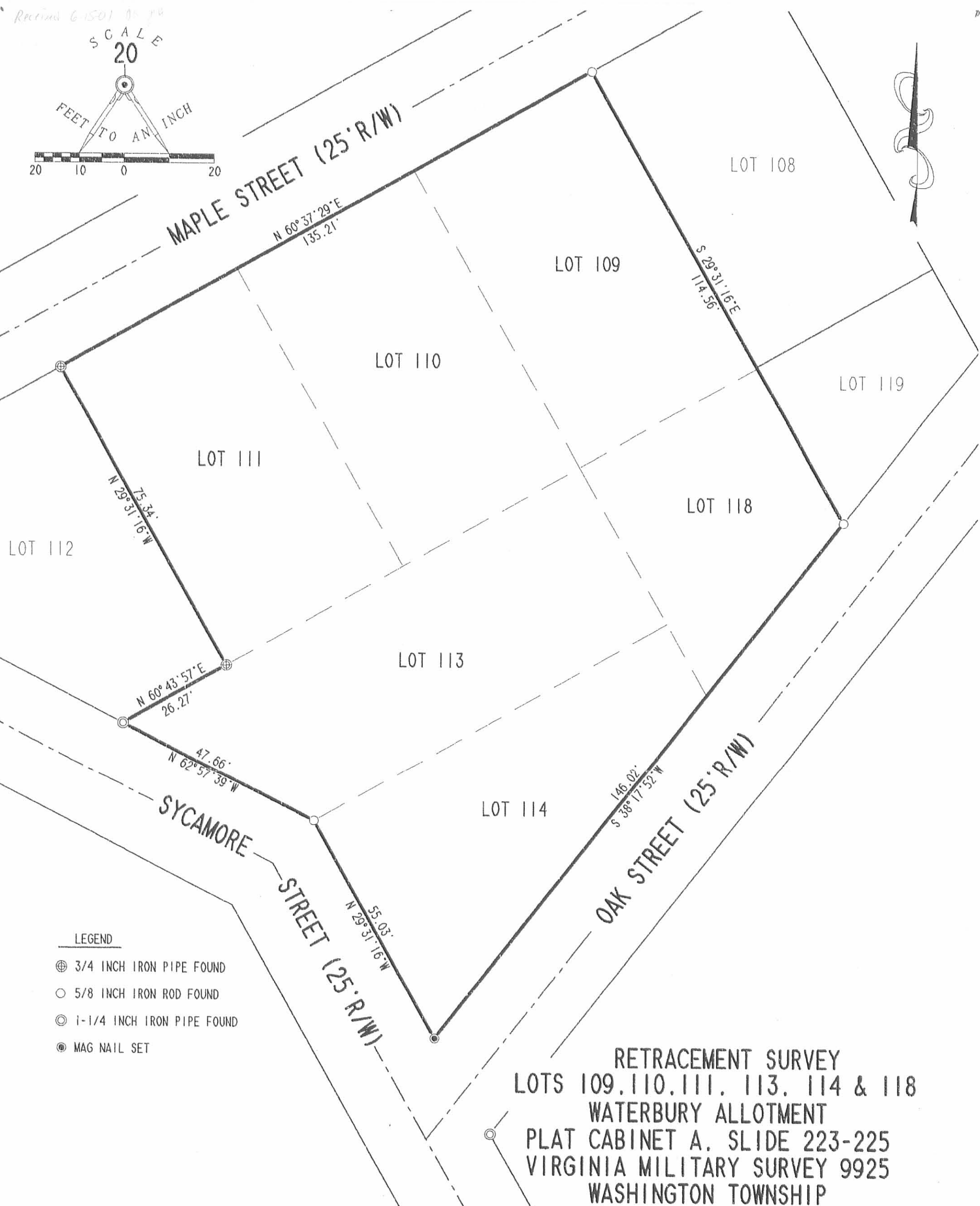
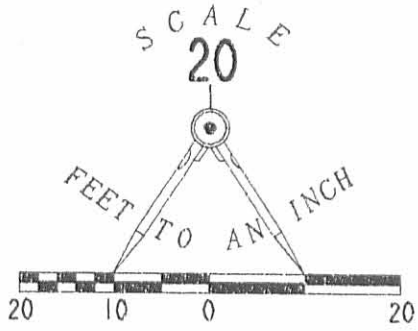
SEPTEMBER 29, 1995
 SCALE: 1" = 20'



Leslie H. Geeslin
 LESLIE H. GEESLIN
 RUSHSVLVANIA, OHIO
 PH 513-468-2793

INDEXED ON MAP
 2394 2P

Revised 6-15-01 01:18



- LEGEND**
- ⊕ 3/4 INCH IRON PIPE FOUND
 - 5/8 INCH IRON ROD FOUND
 - ⊙ 1-1/4 INCH IRON PIPE FOUND
 - MAG NAIL SET

RETRACEMENT SURVEY
LOTS 109, 110, 111, 113, 114 & 118
WATERBURY ALLOTMENT
PLAT CABINET A, SLIDE 223-225
VIRGINIA MILITARY SURVEY 9925
WASHINGTON TOWNSHIP
LOGAN COUNTY, OHIO



ORIGINAL STAMP IN GREEN

SURVEYED BY:

 WILLIAM K. BRUCE
 PROFESSIONAL SURVEYOR 7437
 MAY 30, 2001

2 WORKING DAYS
BEFORE YOU DIG
 CALL TOLL FREE **800-362-2764**
 OHIO UTILITIES PROTECTION SERVICE.

INDEXED ON MAP
 2394 3P

COPYRIGHT 2001 BY:
LEE SURVEYING & MAPPING CO., INC.
 117 North Madriver Street
 BELLEFONTAINE, OHIO 43311
 (937) 593-7335

D-400 HEFNER L-3164-3