

Alley

C.C. Gartee
 Lot 112
 Orchard Island
 June 16-1945
 Grover Wilgus.
 F.F. Wright

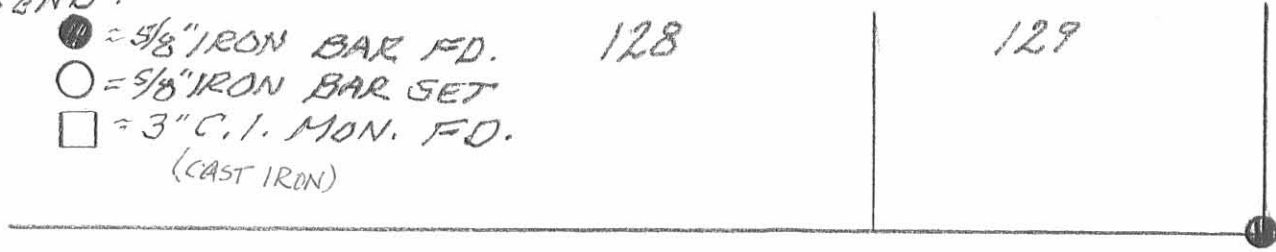
(2412) IP

INDEXED ON MAP

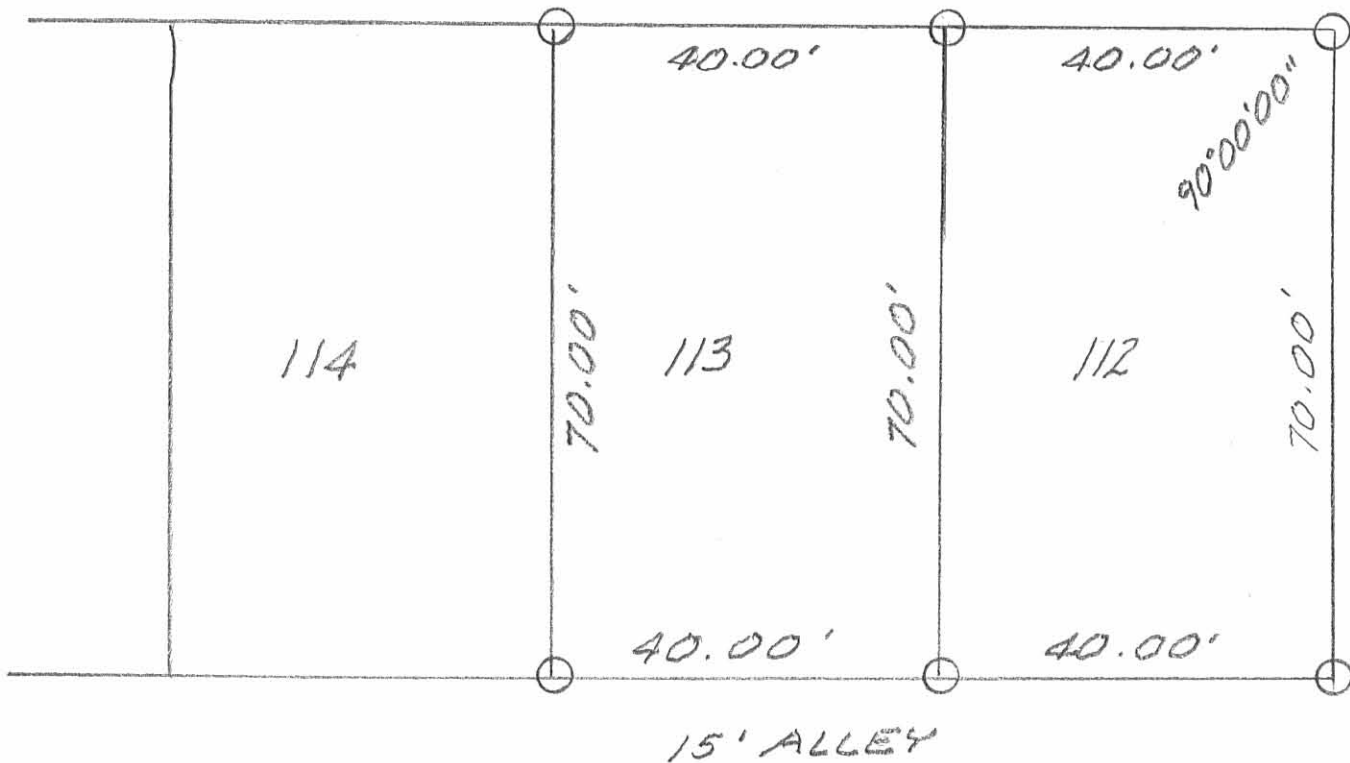
REC'D 3-24-08 6:00 PM

LEGEND:

- = 5/8" IRON BAR F.D. 128
- = 5/8" IRON BAR SET
- = 3" C.I. MON. F.D. (CAST IRON)



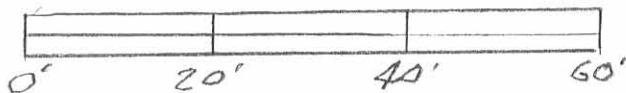
SYCAMORE ST. (30')



SURVEY OF LOTS 112 & 113, ORCHARD ISLAND, PLAT CAB. A, SLIDE 219
 WASHINGTON TWP., LOGAN COUNTY,
 OHIO FOR MARK BLACK

MARCH 20, 2008

SCALE: 1" = 20'



LESLIE H. GEESLIN
 RUSHSVANIA, OHIO
 PH 937-468-7265



Leslie H. Geeslin

ELM ST. (30')

INDEXED ON MAP
 2412 Z