

REFERENCE:
 ORCHARD ISLAND PLAT
 PLAT BOOK B - VOL. 2 - PG. 121 - Co. RECORDER
 FIELD BOOK No. 652 - PG. 30 - Co. ENGINEER

TUVELL SURVEY
 LOTS 438-439
 ORCHARD ISLAND
 SEC. 36 T. 65. R. 8E.
 WASHINGTON TOWNSHIP
 LOGAN COUNTY, OHIO
 OCTOBER 7, 1967
 SCALE: 1" = 40'

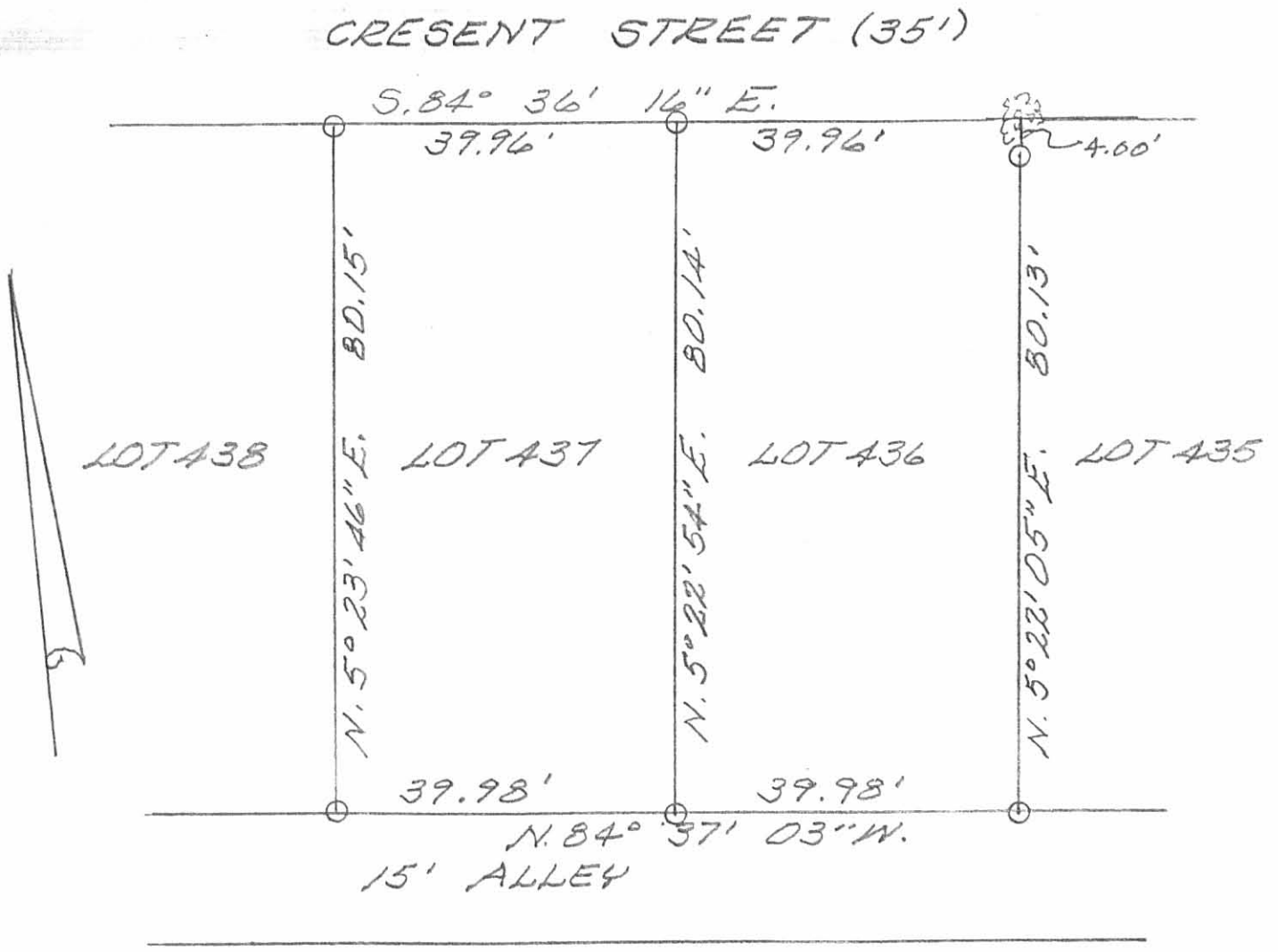
4129

IP
 INDEXED ON MAP

SURVEYED AND PLATTED BY:
 DANIEL E. GILBERT, REG. SUR. 5402

FIELD BOOK - D.E.G. 1 PG. 5

Recd 6-30-99 *for OKQH*



SURVEY OF LOTS 436 & 437
OF ORCHARD ISLAND (PLAT CAB. A-
SLIDE 219-221 - WASHINGTON TWP. -
LOGAN COUNTY, OHIO FOR FRED
RACHLOW.

JUNE 30, 1999
SCALE: 1" = 20'



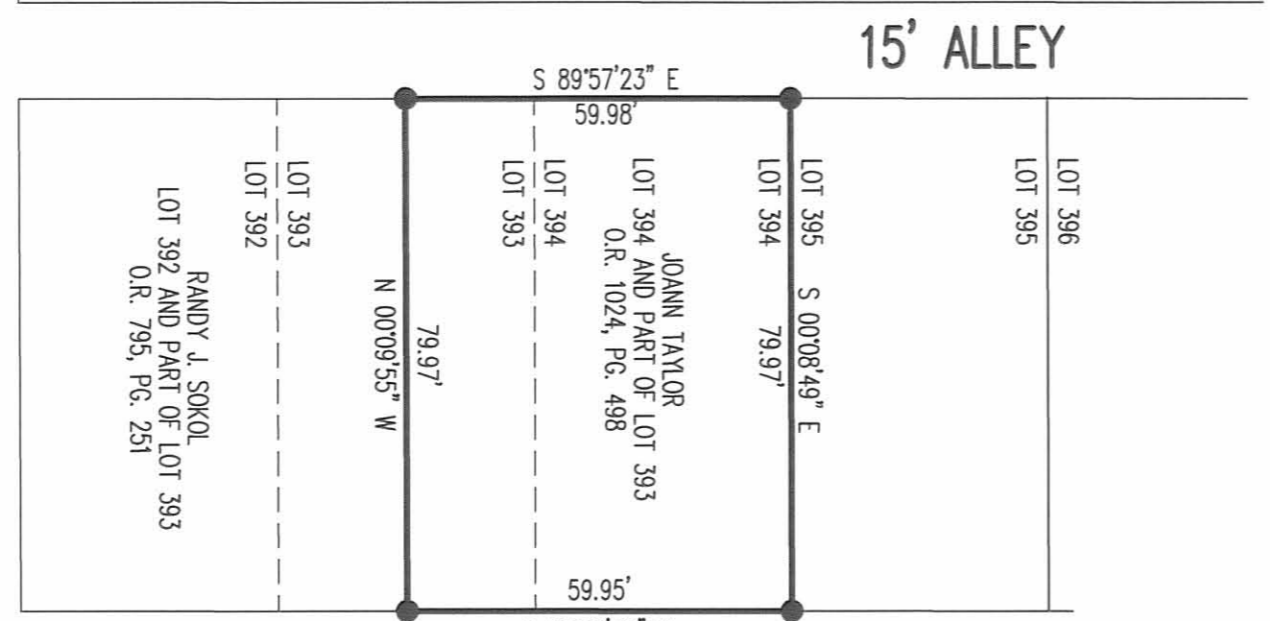
LEGEND:
 (Symbol) = 24' TREE
 (Symbol) = 98" IRON BAR SET

INDEXED ON MAP
4129 2P

Leslie H. Geeslin
 LESLIE H. GEESLIN
 RUSHSVANIA, OHIO
 937-468-2793

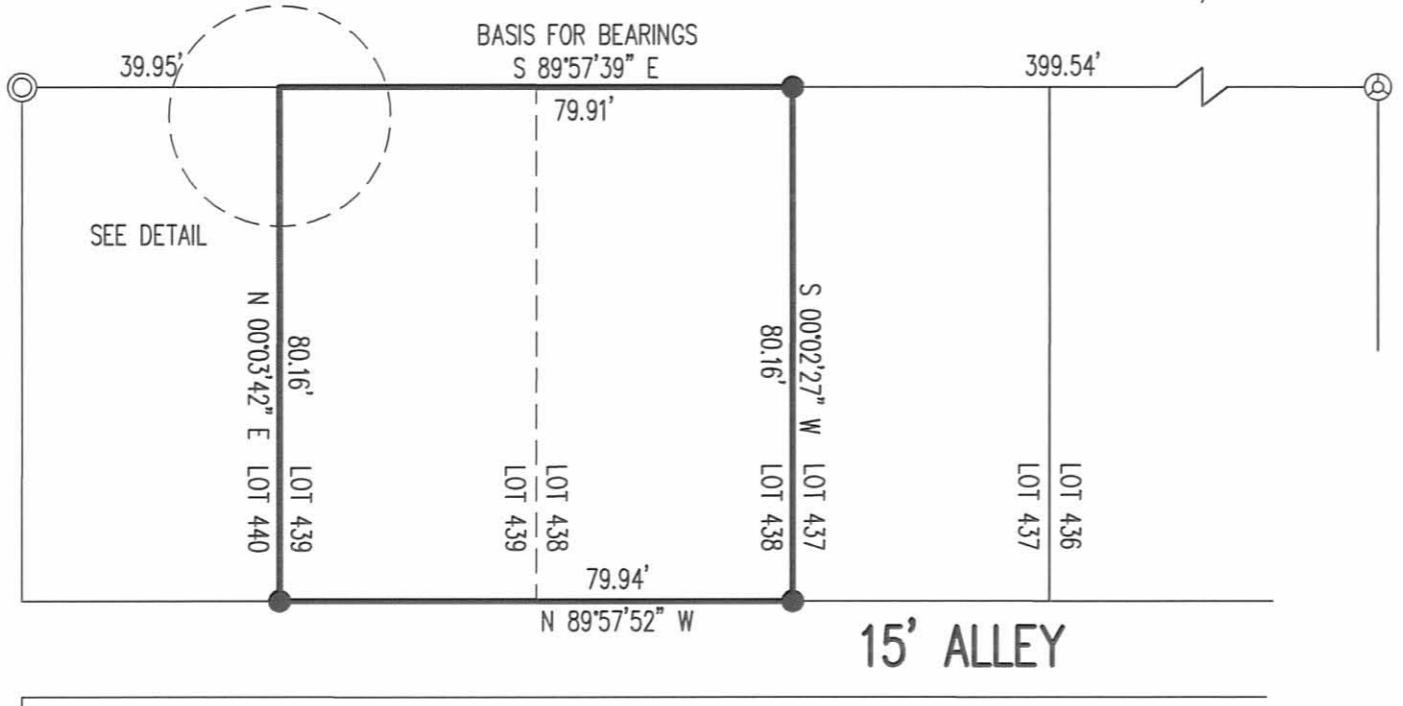
REC'D 7-27-11 SMM OK

MAUGER AVENUE (35')

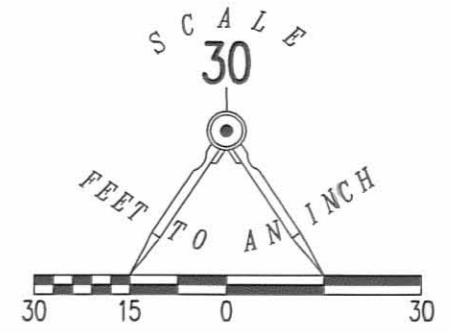
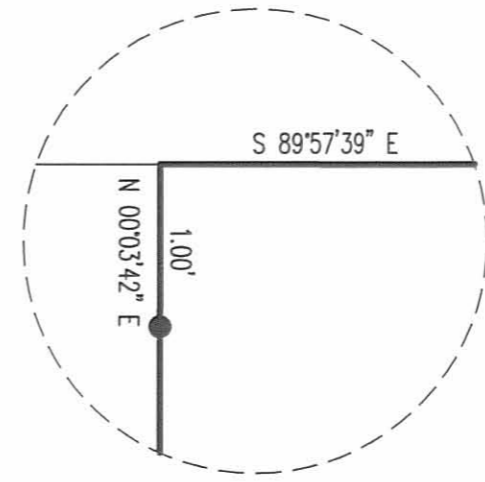


CRESENT STREET (35')

ORCHARD ISLAND
PLAT CABINET A, SLIDE 219



WOODLAWN AVENUE (35')



LEGEND

- 5/8 INCH IRON ROD SET WITH PLASTIC I.D. CAP STAMPED "LSM 7437"
- ⊙ 1 1/2 INCH IRON PIPE FOUND
- ⊕ 1 1/4 INCH IRON BAR FOUND

RETRACEMENT SURVEY OF THE
JOANN TAYLOR
LOTS 439, 438, 394 AND PART OF LOT 393
OFFICIAL RECORD 1024, PAGE 498
ORCHARD ISLAND
PLAT CABINET A, SLIDE 219
WASHINGTON TOWNSHIP
LOGAN COUNTY, OHIO

SURVEYED BY:

William K. Bruce

WILLIAM K. BRUCE
PROFESSIONAL SURVEYOR 7437
JULY 25, 2011



ORIGINAL STAMP IN GREEN

COPYRIGHT 2011 BY:
LEE SURVEYING & MAPPING CO., INC.
117 North Madriver Street
BELLEFONTAINE, OHIO 43311
(937) 593-7335
surveys@lsminc.us
ADW D0711 51820711 L-5182-3

2 WORKING DAYS
BEFORE YOU DIG
CALL TOLL FREE 800-362-2764
OHIO UTILITIES PROTECTION SERVICE

INDEXED ON MAP
4129 3P