

FB 700

C.H. # 214 + 213

Stakes set 20' R&L  
of  $\mathcal{L}$  for Grading

Stakes set for 40' Road  
O = R/W Monuments Found  
Existing Monuments are  
set 20' R&L of  $\mathcal{L}$

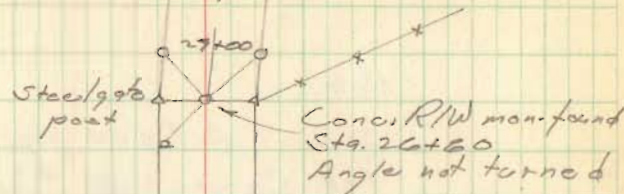
Note ~

Distances on C.H. # 214  
not measured - see F.B. # 555  
pg. 32-35 for stationing

Stationing does not begin  
at  $\mathcal{L}$  of C.H. # 13

D. Dodson  
V. Detrick  
C. Nicholls

Aug. 6, 1950  
Clear-hot 64



20+00.0

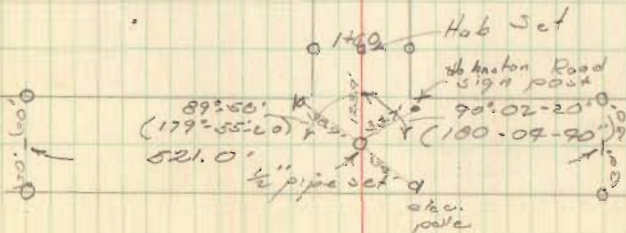
17+00.0

12+00.0

6+00.0

4377

INDEXED ON MAP

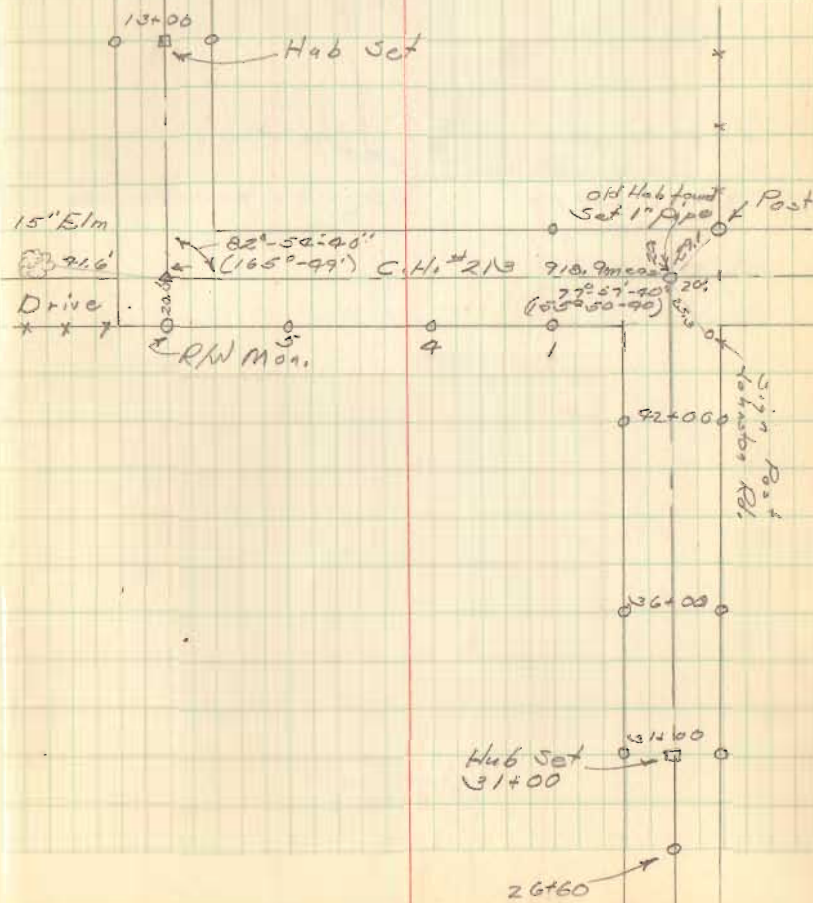


Note:

See F.R. # 606 pg's 54 to 62

For Survey C.H. # 213

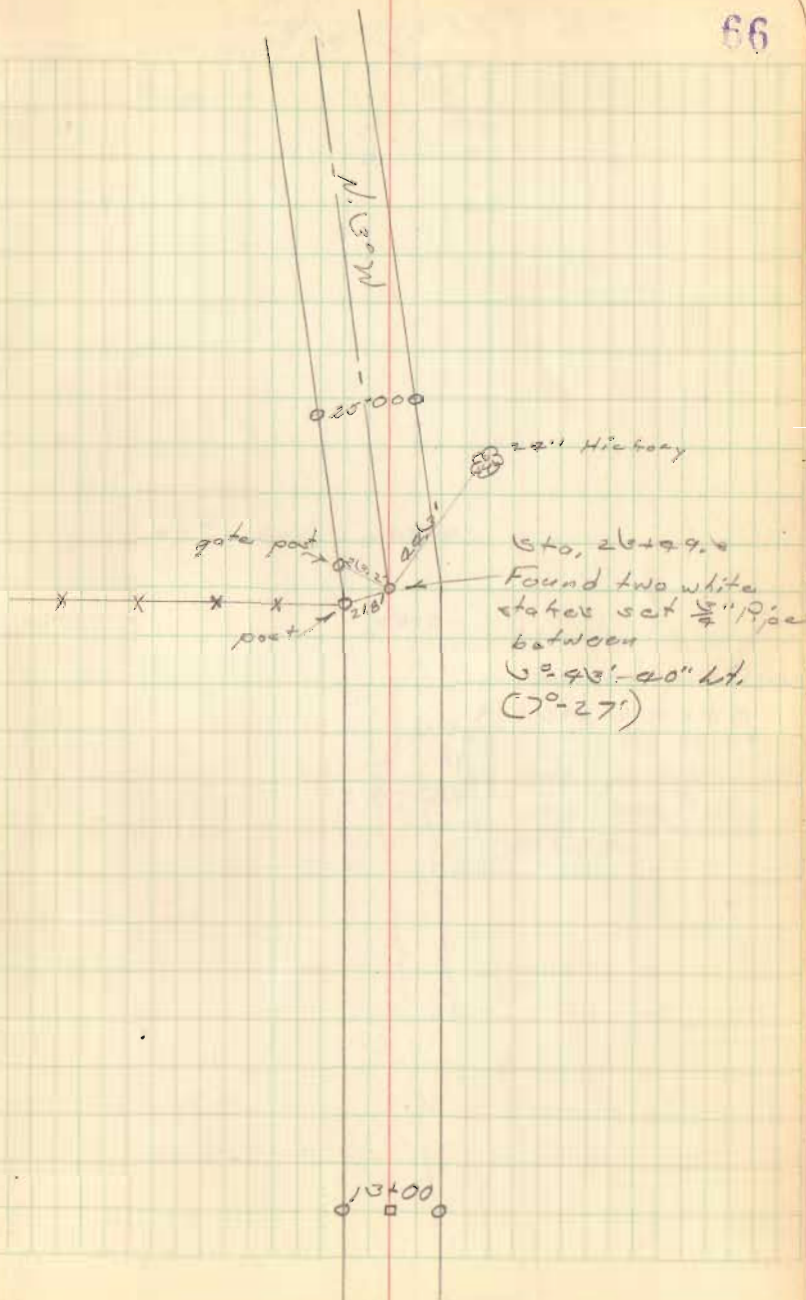
Stations as shown in above F.R.



FB 700

C.H. # 218 & 219

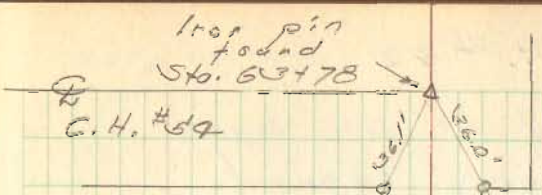
66



FB 700

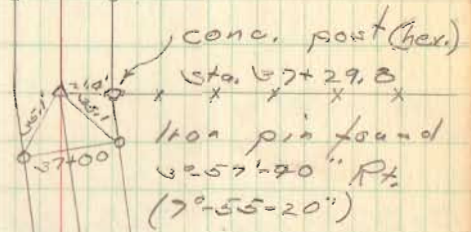
C.H. #219 & 213

57



Left only 43+00

53+00



025+00