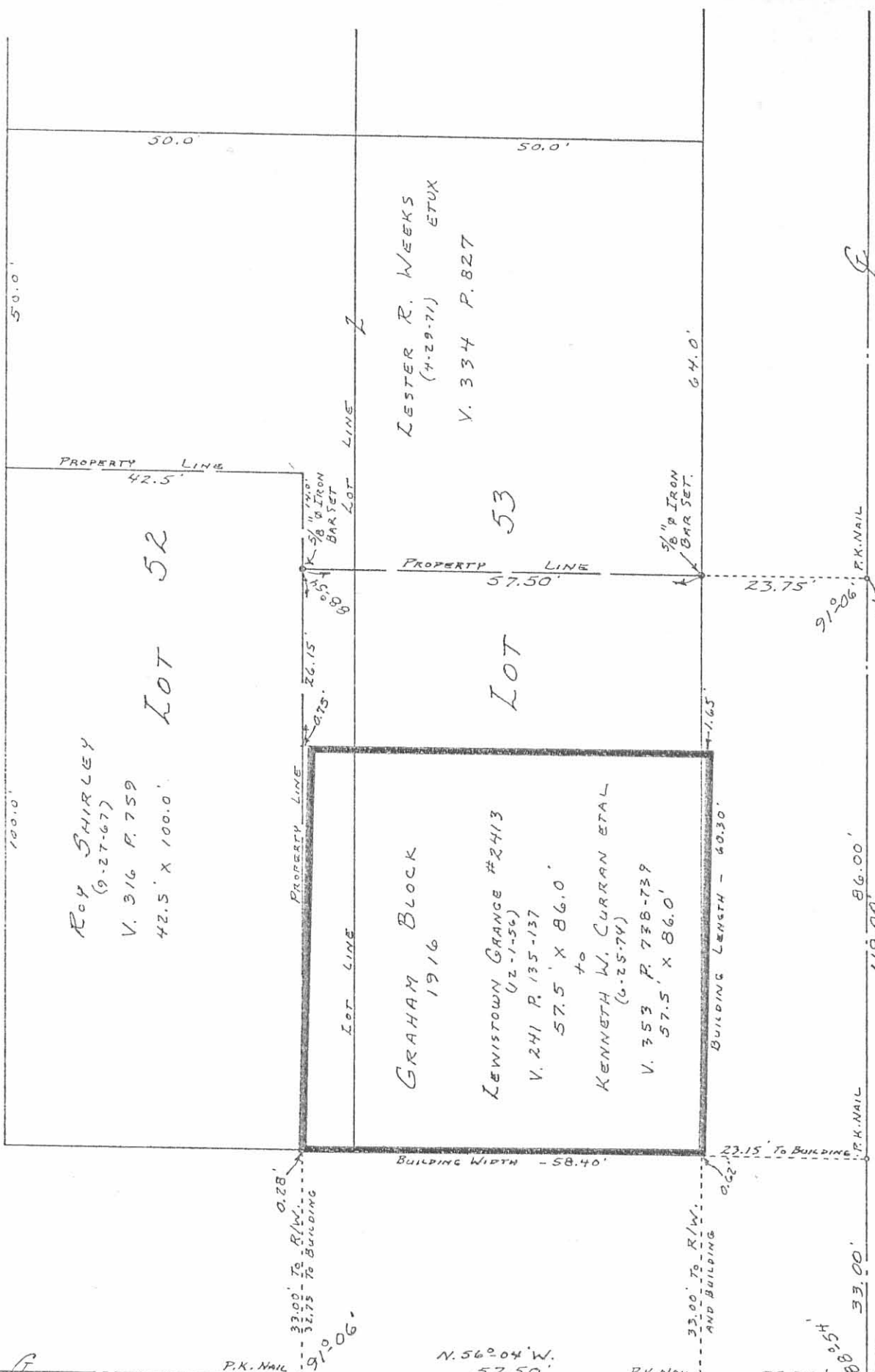


TURTLE ALLEY - 10'



ROY SHIRLEY
(9.27-67)
V. 316 P. 759
42.5' X 100.0'

GRAHAM BLOCK
1916
LEWISTOWN GRANCE #2413
(2-7-56)
V. 241 P. 135-137
57.5' X 86.0'
to
KENNETH W. CURRAN ETAL
(6.25-74)
V. 353 P. 738-739
57.5' X 86.0'

LESTER R. WEEKS
(4.29-71) ETUX
V. 334 P. 827

MAIN STREET

66'
C. H. No. 91

COUNCIL STREET - 47.50'

5706 IP

INDEXED ON MAP

SURVEYED AND PLATED BY:
DANIEL E. GILBERT, P.S.
REG. SUR. No. 5402
1041 N. MAIN ST.
BELLEFONTAINE, OHIO 43311

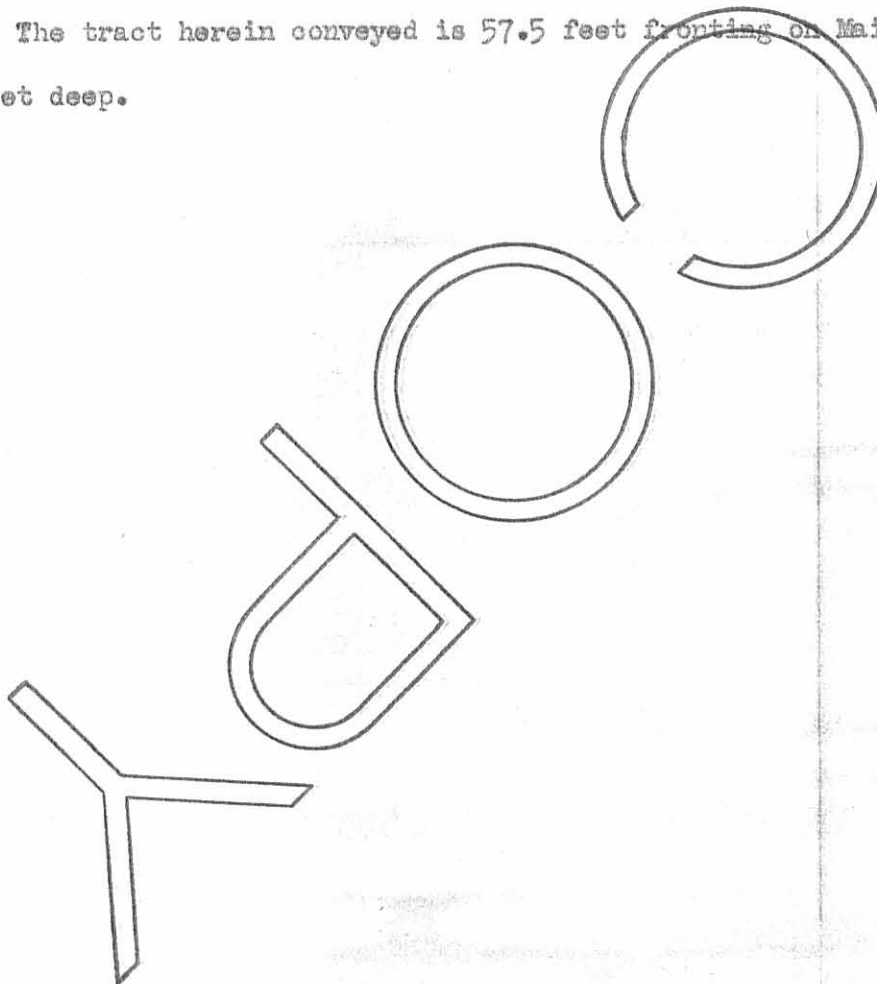
CURRAN SURVEY
PARTS OF LOTS 52-53
VILLAGE OF LEWISTOWN
SECTION 24 T.7S. R.8E.
WASHINGTON TOWNSHIP
LOGAN COUNTY, OHIO
MAY 18, 1974

SCALE: 1" = 20'

The following described real estate situated in Lewistown, Wash-
ington Township, Logan County, Ohio.

Being part of Lots # 52 and # 53 as follows: 7.5 feet front by
100 feet deep out of the southeast corner of lot # 52 and 100 feet off the
south end of lot # 53.

The tract herein conveyed is 57.5 feet fronting on Main Street
by 100 feet deep.



3248

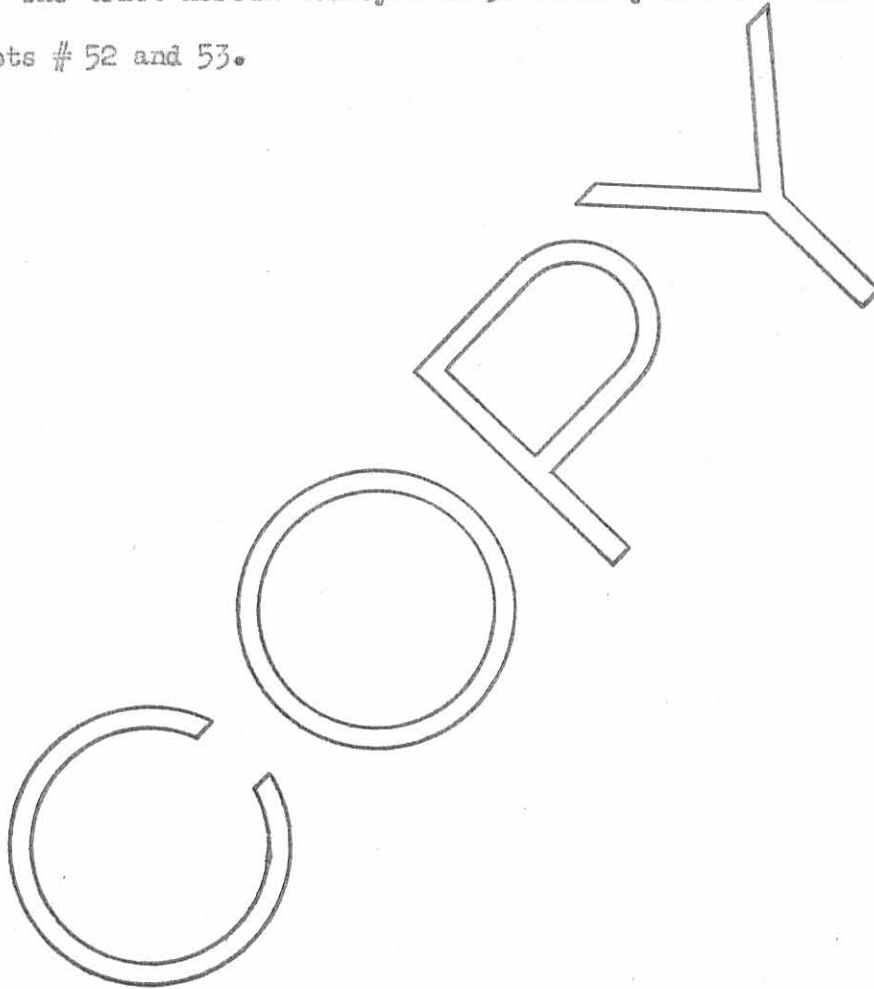
5706 2D-1

INDEXED ON MAP

49
The following described real estate situated in Lewistown, Wash-
ington Township, Logan County, Ohio.

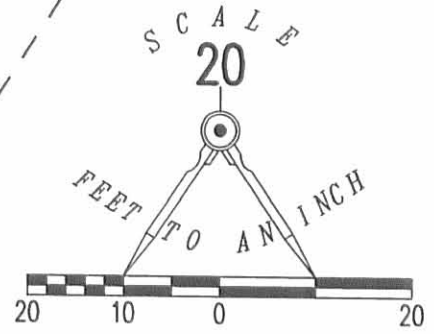
Being parts of Lots # 52 and 53 as follows: 50 feet off the North
end of Lot # 52 and 50 feet off the North end of lot # 53.

The tract herein conveyed is 50 feet by 100 feet off the North
end of lots # 52 and 53.



3248
5706 2D-2
INDEXED ON MAP

RETRACEMENT SURVEY OF THE
CHARLES W. WILLIAMS
ORIGINAL LOT 54
OFFICIAL RECORD 373, PAGE 395
PLAT CABINET A, SLIDE 143
VILLAGE OF LEWISTOWN
WASHINGTON TOWNSHIP
LOGAN COUNTY, OHIO



ROBERTA WELCH
LOTS 68 AND 69
O.R. 986, PG. 766



LEGEND

- 5/8 INCH IRON ROD SET WITH PLASTIC I.D. CAP STAMPED "LSM 7347"
- ⊗ RAILROAD SPIKE FOUND
- MAG NAIL SET OVER RAILROAD SPIKE FOUND

COUNCIL STREET (47.50 FEET WIDE)

N 32°57'06" E
150.15'

CHARLES W. WILLIAMS
ORIGINAL LOT 54
O.R. 373, PG. 395

WALTER L. MANSFIELD JR. AND
TAMARA S. MANSFIELD
LOT 55
O.R. 788, PG. 737
TRACT I

ORIGINAL PLAT OF LEWISTOWN
PLAT CABINET A, SLIDE 143

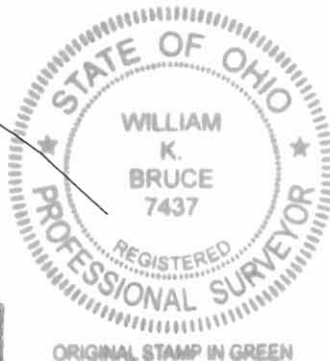
150.90'
S 32°54'49" W

49.91'
N 55°07'35" W

BASIS FOR BEARINGS
S 55°07'38" E
128.12'

COUNTY HIGHWAY 91 (66 FEET WIDE) (MAIN STREET)

SURVEYED BY:



William K. Bruce
WILLIAM K. BRUCE
PROFESSIONAL SURVEYOR 7437
AUGUST 17, 2011

COPYRIGHT 2011 BY:
LEE SURVEYING & MAPPING CO., INC.
117 North Modriver Street
BELLEFONTAINE, OHIO 43311
(937) 593-7335

2 WORKING DAYS
BEFORE YOU DIG
CALL TOLL FREE 800-362-2764
OHIO UTILITIES PROTECTION SERVICE

INDEXED ON MAP
5706 3P