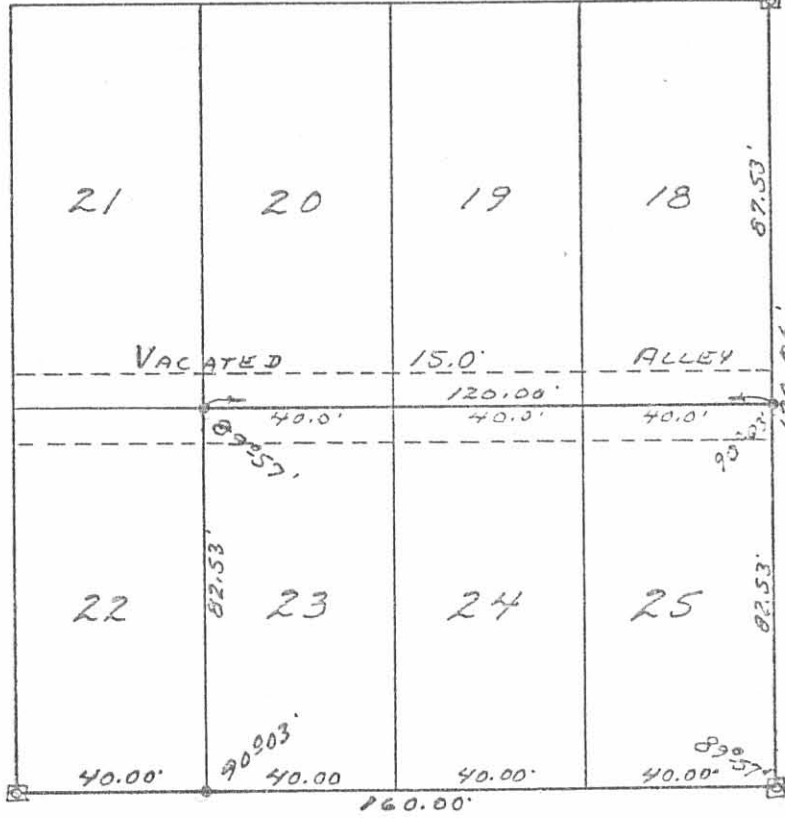




COTTAGE GROVE AVE. - 35'

CHESTNUT ST. - 35'

MAUGER AVE. - 35'



POPLAR ST. - 35'

- ☒ - 2"x2" C.I. BARS FD.
- - 5/8" ♂ IRON BARS SET.

5714 IP
INDEXED ON MAP

SURVEY AND PLATTED BY:
DANIEL E. GILBERT, P.S.
REG. SUR. NO. 5402
1041 N. MAIN ST.
BELLEFONTAINE, OHIO 43311

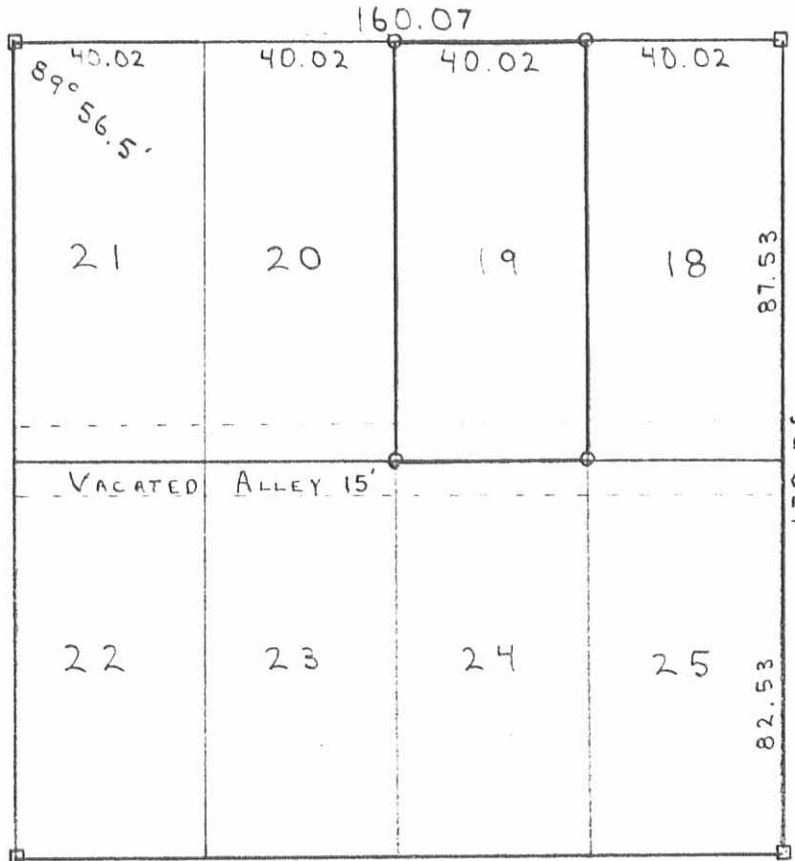
HUFF SURVEY
LOTS 23, 24, 25
ORCHARD ISLAND
SECTION 36 T.6S. R.8E.
WASHINGTON TOWNSHIP
LOGAN COUNTY, OHIO
MAY 27, 1978

SCALE: 1"=40'



COTTAGE GROVE AVENUE 35'

CHESTNUT STREET 35'



POPLAR STREET 35'

MAUGER AVENUE 35'

□ = 2" X 2" IRON MON. FO.
 ○ = 5/8" IRON BAR SET

SURVEY OF LOT 19 IN
 ORCHARD ISLAND
 SEC. 36; T. 6 S.; R. 8 E.
 WASHINGTON TWP.
 LOGAN COUNTY, OHIO
 AUGUST, 1986
 SCALE 1" = 40'



Leslie H. Geeslin

 LESLIE H. GEESLIN
 RUSHSVLVANIA, OHIO

INDEXED ON MAP
 5714 2P