

SUMMARY OF ADDITIONAL RIGHT OF WAY REQUIRED

NOTE:
RESIDUE AREAS ARE ROUNDED OFF
AND WHEN ADDED TO TAKE AREAS
WILL NOT EQUAL DEED AREA.

STATE JOB NO.	FHWA REGION	STATE	PROJECT
078670	5	OHIO	

LOGAN COUNTY
LOG-708-0.68

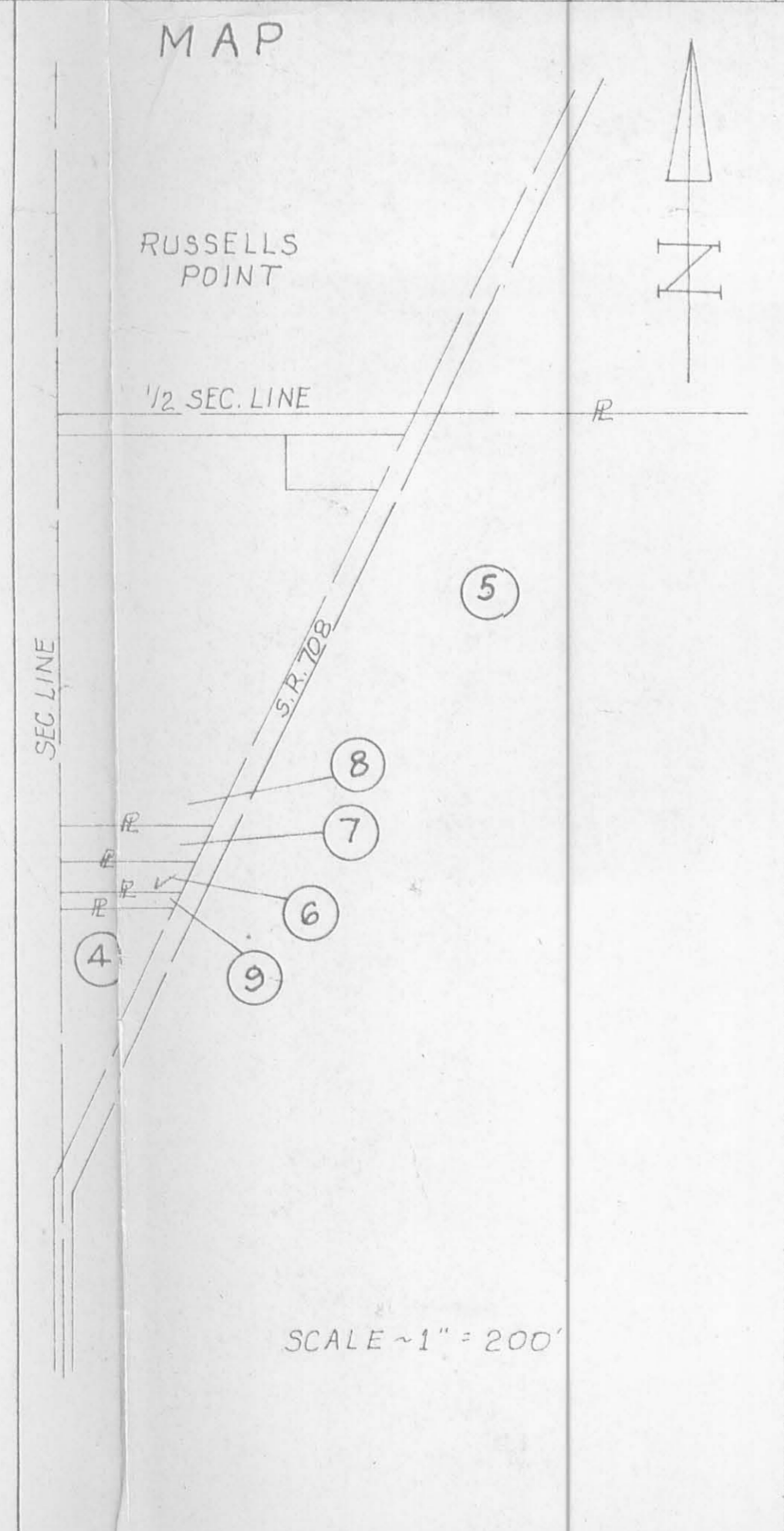
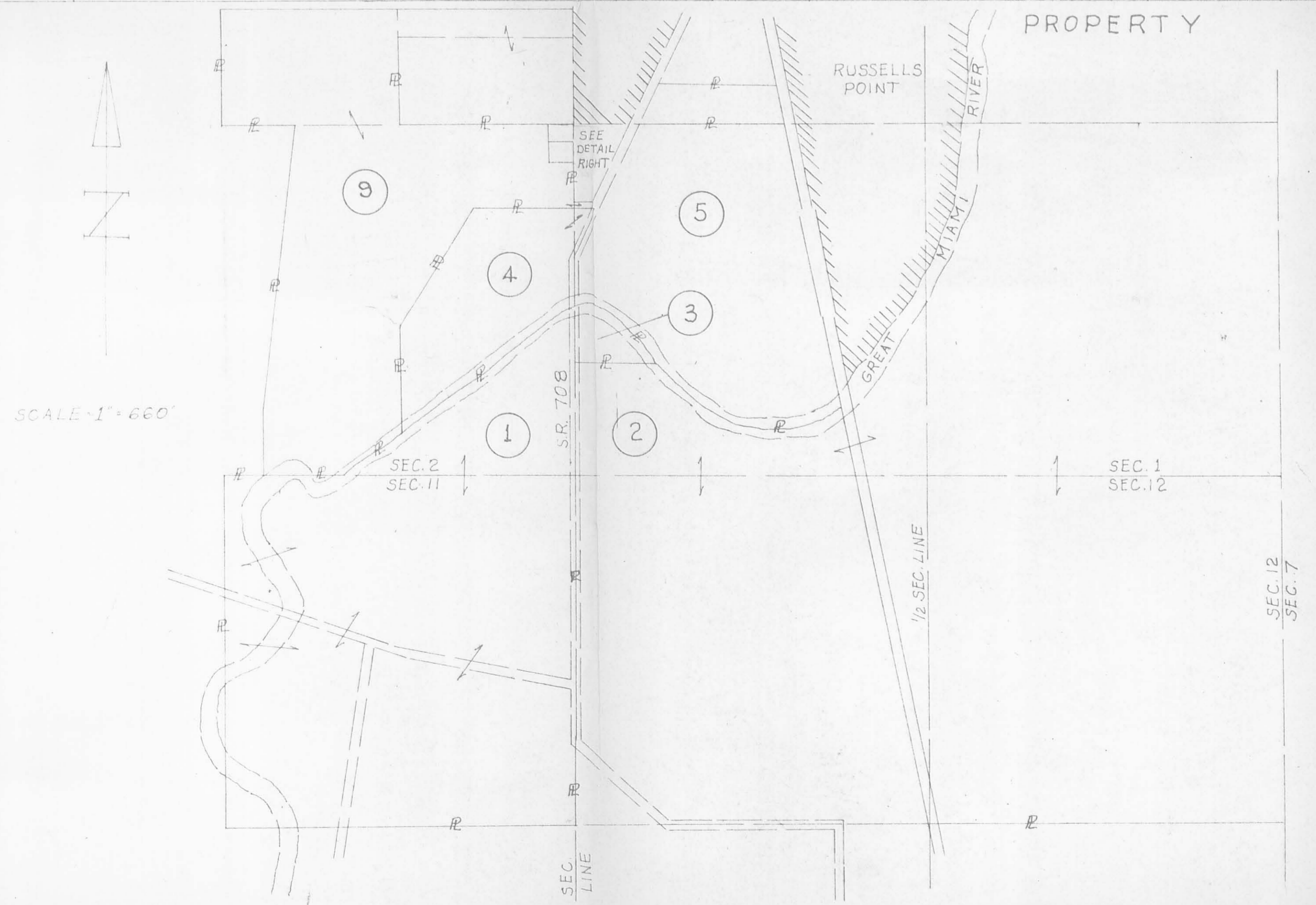
31
32
1
2

TOTAL NO. OWNERS - 9

TOTAL NO. COMPLETE TAKES - 0

TOTAL OWNERS WITH STRUCTURES INVOLVED - 0

PARCEL NO.	OWNER	DEED RECORD			DEED AREA	TOTAL PRO	TOTAL TAKE	PRO IN TAKE	NET TAKE	NET RES. LT.	NET RES. RT.	BLDG'S. TO BE ACQ'D.	SHEET NO.	REMARKS	OTHER DESIGNATED EASEMENTS	TYPE FUND
		BOOK	PAGE	DATE												
1	KATHRYN L. BRUBAKER	232	384	10-21-55	29.00±	0.72	1.778	0.664	1.114	27.17±			2	*TRACT 4 SEC.2 TOTAL DEED 367.50 Ac.		
1X	" " "									0.015						
2	Agri-LOGAN FARMS INC - AN OHIO CORP.	368	571	1-18-77	88.53±	0.49	1.054	0.429	0.625					*TRACT II SEC.1 TOTAL DEED 721.69 Ac.		
3	GEORGE JUNIOR BURTON, ET UX	279	413	2-23-62	4 ACRES±	0.192	0.674	0.192	0.482							
3T	" " "						0.021		0.021					CONSTRUCT DRIVE		
4	GLADYS MATTOX	353	3	4-21-75	36.96±	0.500	1.654	0.500	1.154							
4X	" " "						0.048		0.048							
5	THE BOARD OF COUNTY COMMISSIONERS OF LOGAN CO., OH.	247	90	8-6-31	73.14±	0.916	2.371	0.916	1.455							
5X	" " " " " " " "						0.087		0.087							
5T	" " " " " " " "						0.084		0.084					CONSTRUCT DRIVE, GRADING, SEEDING		
6	JAMES E. DUFF	334	99	3-8-71	0.25±	0.032	0.073	0.032	0.041	0.18±						
7	PHILLIP K. COOPER	388	129	4-28-75	0.25±	0.029	0.056	0.029	0.027	0.19±						
8	LEONA M. COOPER	284	298	10-5-62	0.50±	0.074	0.103	0.074	0.029	0.40±						
8T	" " "						0.023		0.023					MEET EXIST. TOPO, GRADING, SEEDING		
9	ARTHUR F. MAST, ET UX	305	929	12-11-65	0.11±	0.016	0.040	0.016	0.024	0.07±			2	*TRACT II SEC.1 TOTAL DEED 126.88 Ac.		



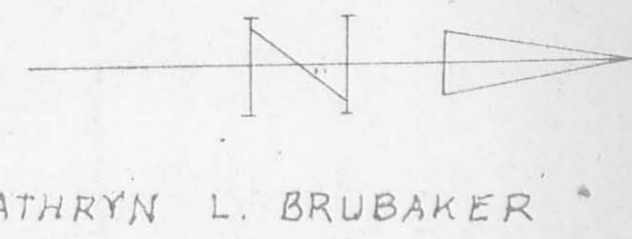
NOTE:
THIS PART OF LOG-708 SHOWN UNDER LOG-235-18.34
LOG-708-00.80 & PLAT AS RECORDED IN VOL. 1, PG. 47
OF THE LOGAN COUNTY RECORDERS RECORDS.

SURVEY STATION	DISTANCE FROM	
	LT.	RT.
2 STA. 34+75	18'	18'
1 STA. 46+74.15	SET ON P.I.	
2 STA. 58+60.95	18'	18'
5 TOTAL MONUMENTS SET		

6265 IP-1
INDEXED ON MAP

APR 11 1978	
COMPLETION DATE 10-26-77	DESCRIPTION
REVISION DATE 4-7-78	PAR 2 Ownership Change

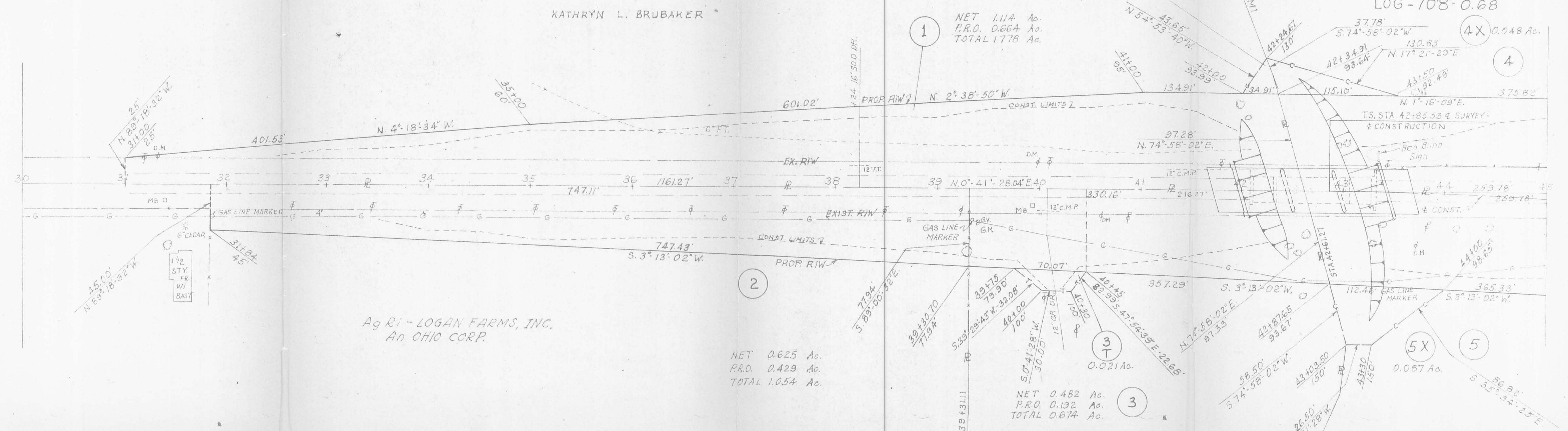
WASHINGTON TWP. SEC. 2 T.7-R.8



FHWA REGION	STATE	PROJECT
5	OHIO	

LOGAN COUNTY
LOG-708-0.68

32
32
2
2



Agri - LOGAN FARMS, INC.
An OHIO CORP.

NET 0.625 Ac.
P.R.O. 0.429 Ac.
TOTAL 1.054 Ac.

NET 0.482 Ac.
P.R.O. 0.192 Ac.
TOTAL 0.674 Ac.

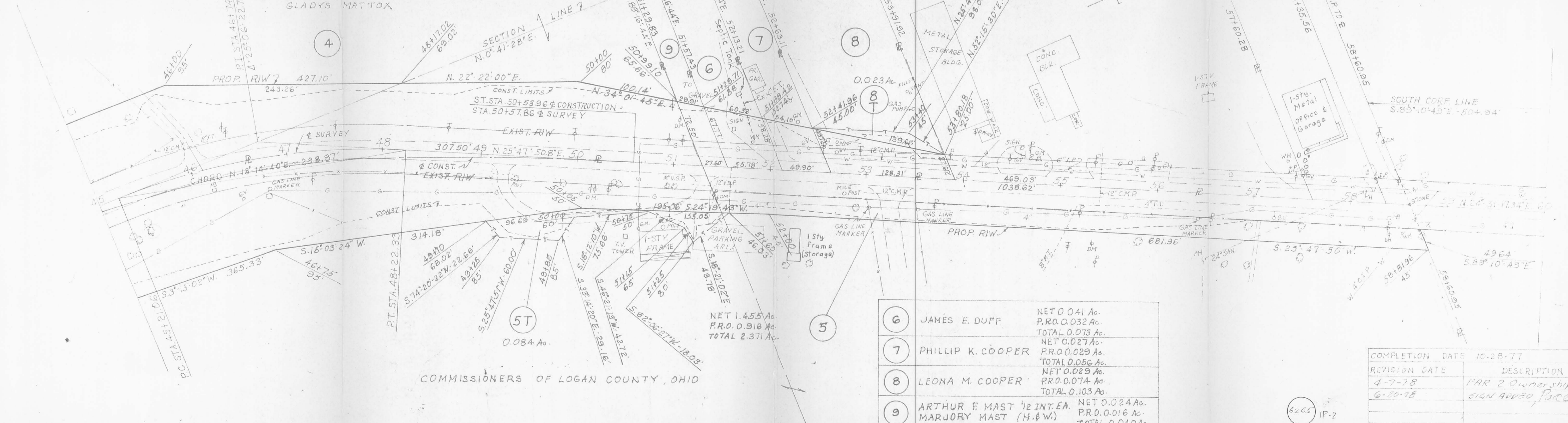
GEORGE JUNIOR BURTON
MINNIE K. BURTON (H. & W.)

WASHINGTON TWP. SEC. 1 T.7-R.8

CURVE DATA EXIST. & SURVEY

PI STA 44+74.15	Δ 25°06'23" RT.	N. 293356.894
D=87.20	E=16.84	E. 1611773.244
R=347.55	L=301.27	
T=143.00		

SEC.	NET	P.R.O.	TOTAL
SEC. 1	0.381	0.277	0.658
SEC. 2	0.773	0.223	0.996
TOTAL	1.154	0.500	1.654



6	JAMES E. DUFF	NET 0.041 Ac. P.R.O. 0.032 Ac. TOTAL 0.073 Ac.
7	PHILLIP K. COOPER	NET 0.027 Ac. P.R.O. 0.029 Ac. TOTAL 0.056 Ac.
8	LEONA M. COOPER	NET 0.029 Ac. P.R.O. 0.074 Ac. TOTAL 0.103 Ac.
9	ARTHUR E. MAST 1/2 INT. EA. MARJORY MAST (H. & W.)	NET 0.024 Ac. P.R.O. 0.016 Ac. TOTAL 0.040 Ac.

COMPLETION DATE	10-28-77
REVISION DATE	DESCRIPTION
4-7-78	PAR 2 Ownership Change
6-20-78	SIGN ADDED, Parcel 4

WASHINGTON TWP. SEC. 1 T.7-R.8