

FB 712

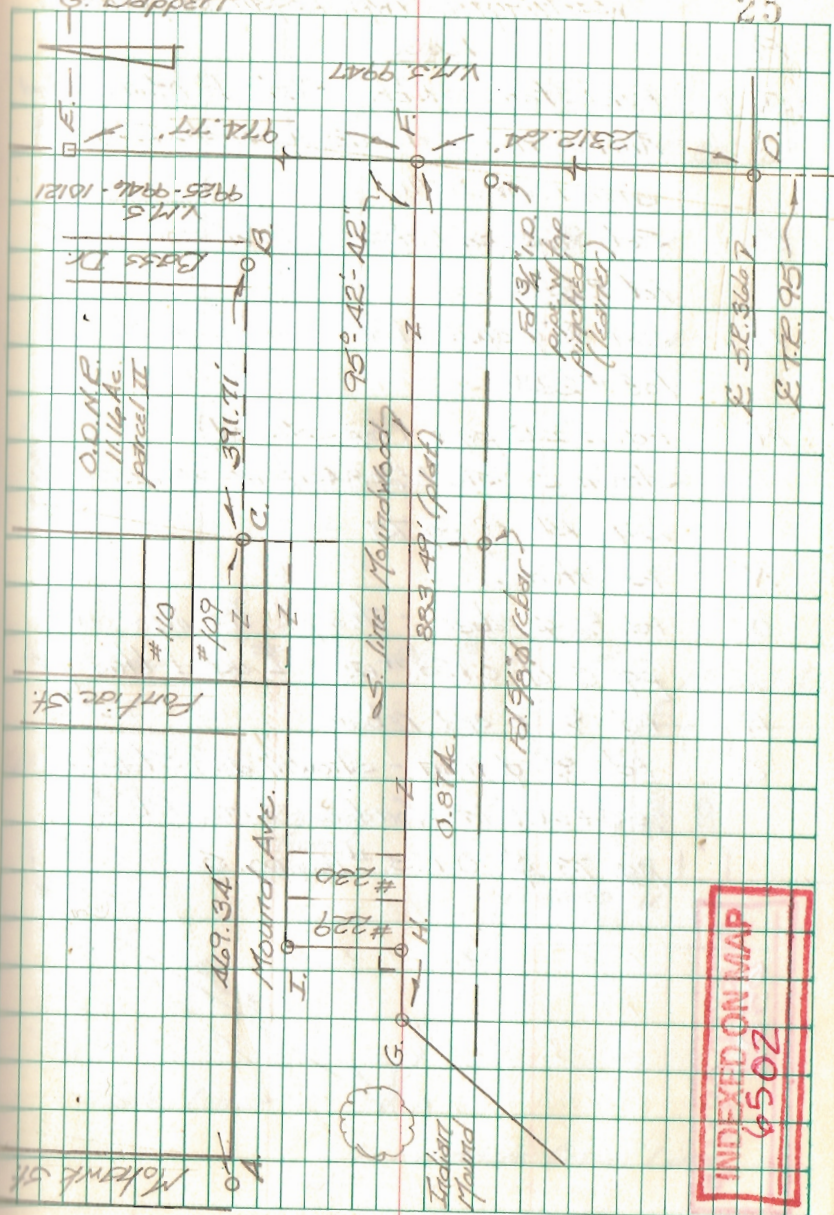
Indian Mound Park
Moundwood Allotment
Washington Twp., Logan Co., Ohio

- | Pt. | Desc. |
|-----|---|
| A. | Set R.R. Spike - Fd. a R.R.
Spike here in 1989 (destroyed during street construction)
Ref: O.K.S. F.Bk. #12, pg. 5. |
| B. | Fd. $\frac{3}{4}$ " I.D. pipe - Ref: O.K.S. F.Bk. #11, pg. 5T |
| C. | Fd. $1\frac{1}{2}$ " I.D. pipe (bent) - straightened and reset as per O.K.S. F.Bk. #7, pg. 10 |
| D. | Set R.R. spike - Intersection $\frac{1}{2}$ T.R.
95 W/ $\frac{1}{2}$ S.R. 3666 |
| E. | Fd. $\frac{5}{8}$ " ϕ iron - Ref: O.K.S. F.Bk. #7, pgs. 43-46 |
| F. | Set $\frac{5}{8}$ " ϕ cpd. rebar - Intersection of line D-E w/ a line parallel with and 115.00' (plat distance) perpendicular to line A-B. |
| G. | Set $\frac{5}{8}$ " ϕ cpd. rebar plat distance (383.49') from pt. F on a line parallel with and 115.00' perpendicular to line A-B. |
| H. | Set $\frac{5}{8}$ " ϕ cpd. rebar on line A-B 40.00' (plat distance) from pt. G. |
| I. | Set $\frac{5}{8}$ " ϕ cpd. rebar 80.00' (plat distance) from pt. H. and perpendicular to line G-F. |

C. Dill
B. Simmons
G. Dappert

Oct. 04

25



INDEXED ON MAP
6502

FB 712

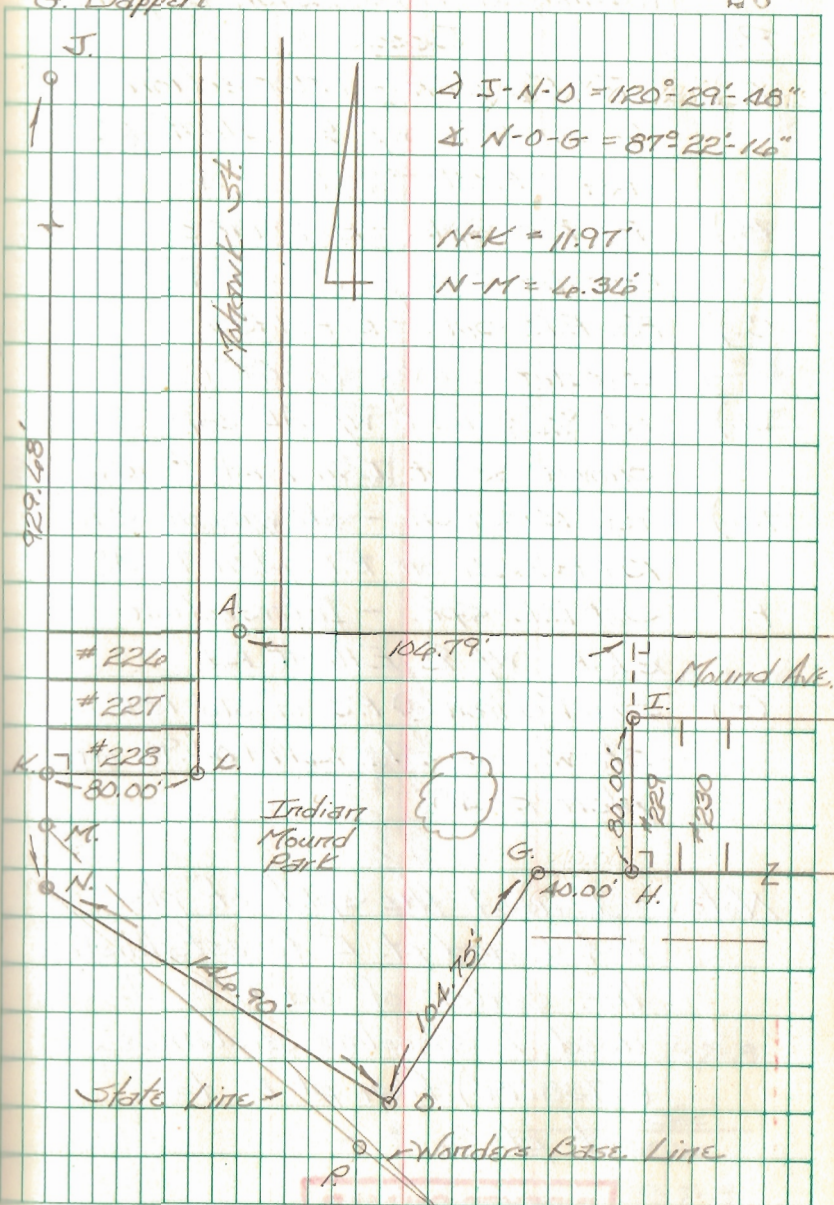
Indian Mound Park
Moundwood Allotment
Washington Twp, Logan Co., Ohio

- | Pt. | Desc. |
|-----|--|
| J. | Fd. Stone - Ref. Plat of Moundwood Allotment (plat cab. A, slide 231) also F.O.K. #711 |
| K. | Set $\frac{3}{8}$ " ϕ cpd. rebar - S.W. cor. of lot #228 |
| L. | Set $\frac{3}{8}$ " ϕ cpd. rebar - S.E. cor. of lot #228 |
| M. | Fd. 2" I.D. pipe (top splayed) - shown as sta 86+84.6 in Wonders Line Bk. 5, pg. 73 |
| N. | Fd. stone |
| O. | Fd. $\frac{3}{8}$ " ϕ rebar - This pt. fit info on pg. 5 of O.K.S. #12 - I used this pt. |
| P. | Fd. $\frac{5}{8}$ " ϕ cpd. rebar |
| Q. | Fd. $\frac{3}{8}$ " ϕ iron - shown as sta. 85+14.9 in Wonders Line Bk. 5, pg. 73 & O.K.S. #12, pg. 5. |

C. Dill
B. Simmons
G. Dappert

Oct. 04

26



INDEXED ON MAP
0502