

Let No. 136 and 136A  
Description

The following described real estate situated in the Township of Washington, County of Logan, State of Ohio and being located in Virginia Military Survey No. 9925-9946-10121 and being a part of Waterbury Summer Resort and being more particularly described as follows:

Being Let No 136 and 136A of Waterbury Summer Resort, and described as follows;

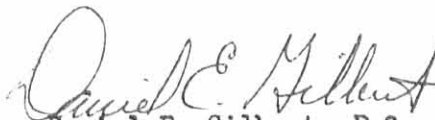
Beginning at an iron bar in the east line of Walnut Street at the northwest corner to Let No. 136;

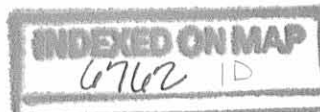
Thence with the north line of Let No. 136 and 136A, S. 79° 15' E. 136.55 feet  
on the shore of Dunn's Pond  
to a P. K. Nail set in a weed deck, passing through an iron bar at 95.00 feet;

Thence with the shoreline of Dunn's Pond, S. 16° 19.1' W. 40.13 feet to a point;

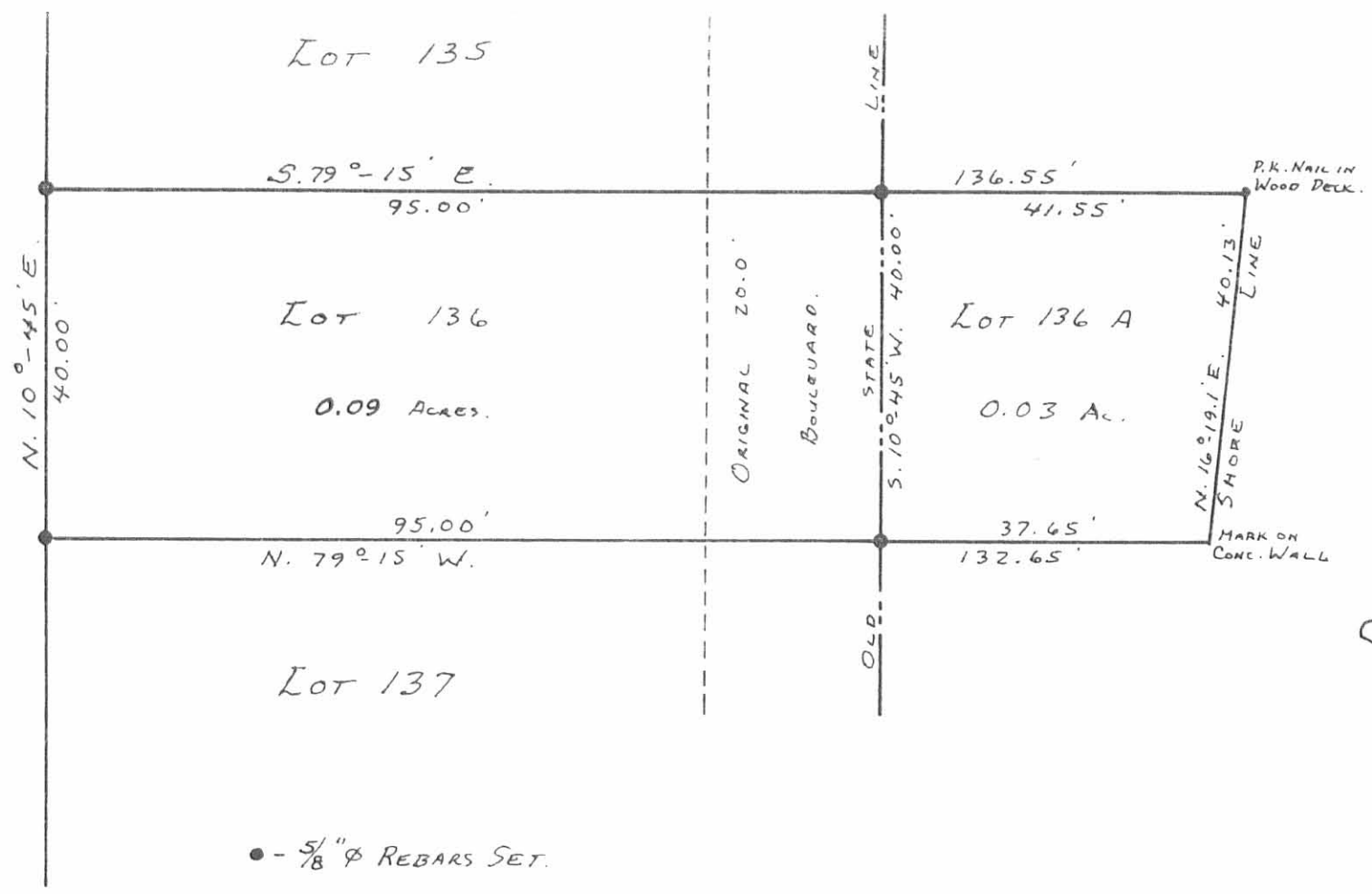
Thence with the south line of Let No. 136A and Let No. 136, N. 79° 15' W. 132.65 feet to an iron bar in the east line of Walnut Street, passing through an iron bar at 37.65 feet, containing a total of 0.12 Acres, of which 0.09 Acres is in Let No. 136 and 0.03 Acres is in Let No. 136A.

I hereby certify that this is a true and accurate description of said tract as surveyed by me on August 14, 1982.

  
Daniel E. Gilbert, P.S.  
Reg. Sur. No. 5402  
1041 N. Main St.  
Bellefontaine, Ohio 43311



WALNUT STREET - 25'



6762 1P

INDEXED ON MAP

SURVEYED AND PLATTED BY:  
 DANIEL E. GILBERT, P.S.  
 REG. SUR. NO. 5402  
 1041 N. MAIN ST.  
 BELLEFONTAINE, OHIO 43311

LOT 136 SURVEY  
 WATERBURY SUMMER RESORT  
 V.M.S. 9925-9946-10121  
 WASHINGTON TOWNSHIP  
 LOGAN COUNTY, OHIO  
 AUGUST 14, 1982  
 SCALE: 1" = 20'

9-23-15

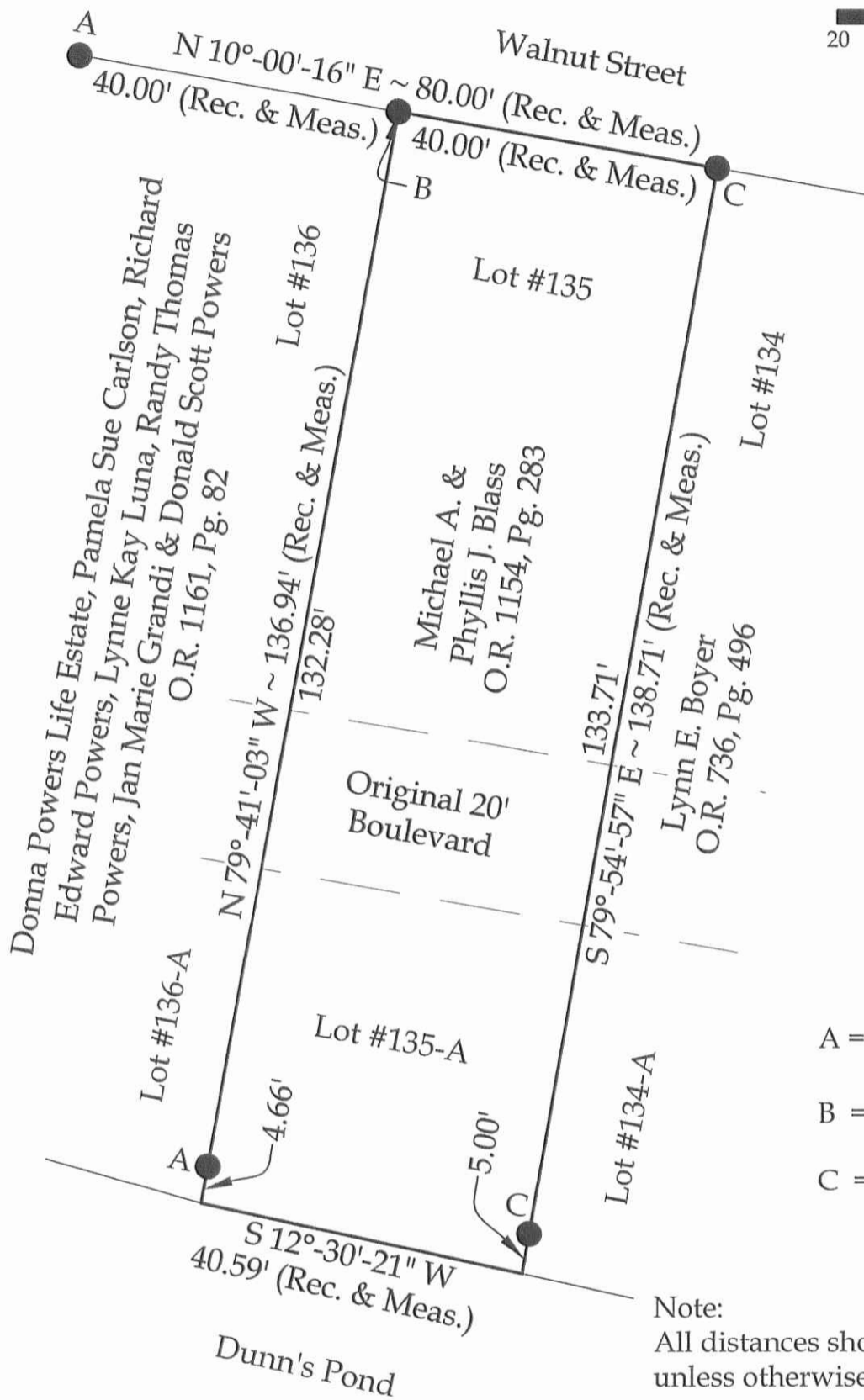
Survey of Lot #135 of Waterbury Summer Resort (Plat Cabinet A, Pages 223-225 and Lot #135-A of Indian Lake Reservoir Lands, Waterbury Summer Resort (Plat Cabinet A, Slides 581-587) and being the a part of VMS 9925, Washington Township, Logan County, Ohio.



SCALE: 1" = 20'



GRAPHIC SCALE



Legend

- A = Existing #5 Rebar
- B = Existing 1/2" Iron Pipe
- C = Set #5 Rebar

Note: All distances shown are measured unless otherwise noted.

BASIS OF BEARINGS: The system of bearings for this plat and legal description is based on the Ohio State Plane - North Coordinate System.



This plat represents an actual boundary survey completed under my direct supervision on August 25, 2015.

*[Signature]*  
Kyle J. Binkley, P.S. #8587



121 W. Auglaize Street  
Wapakoneta, Ohio 45895  
(419) 236-3768

CLIENT: Phyllis Blass			
SURVEYED BY: K.J.B.	DATE: 08-25-2015	DRAWN BY: K.J.B.	CHECKED BY: K.J.B.
SCALE: 1" = 20'	PAGE: 1	OF: 1	PAGES: 1

INDEXED ON MAP  
6762 2P