

HOOVER SURVEY
Sec.13 T-7s R-8e
WASHINGTON TOWNSHIP
October 5, 1968

The following described real estate situated in Washington Township, Logan County, Ohio and being part of the north 1/2 of the southeast 1/4 of the southeast 1/4 of Section 13, Town 7 south, Range 8 east of the First Principal Meridian and more particularly described as follows:

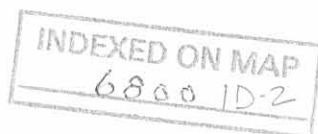
Beginning at an iron pin in the center of County Highway No. 61 at the northwest corner of the Logan Farm Bureau's 2.50 acre tract, said pin being Station 9+58.2 as shown in Logan County Engineers field book No. 560, page 60; thence with the north line of said 2.50 acre tract S.89° 00'E. 97.07 feet to an iron bar in the west right of way line of the T. & O.C. Railroad, passing an iron bar at 25.00 feet; thence with said west right of way line, being parallel with and 50.00 feet west of the center line of said railroad N.9° 39'W. 104.1 feet to an iron bar; thence with said right of way line N.80° 21'E. 25.0 feet to an iron bar; thence with said right of way line being parallel with and 25.0 feet west of said centerline, N.9° 39'W. 300.0 feet to an iron bar; thence with said right of way line S.80° 21'W. 25.0 feet to an iron bar; thence with said right of way line, being parallel with and 50.0 feet west of said center line N.9° 39'W. 76.50 feet to an iron pin in the center of said

INDEXED ON MAP
6809 1D-1

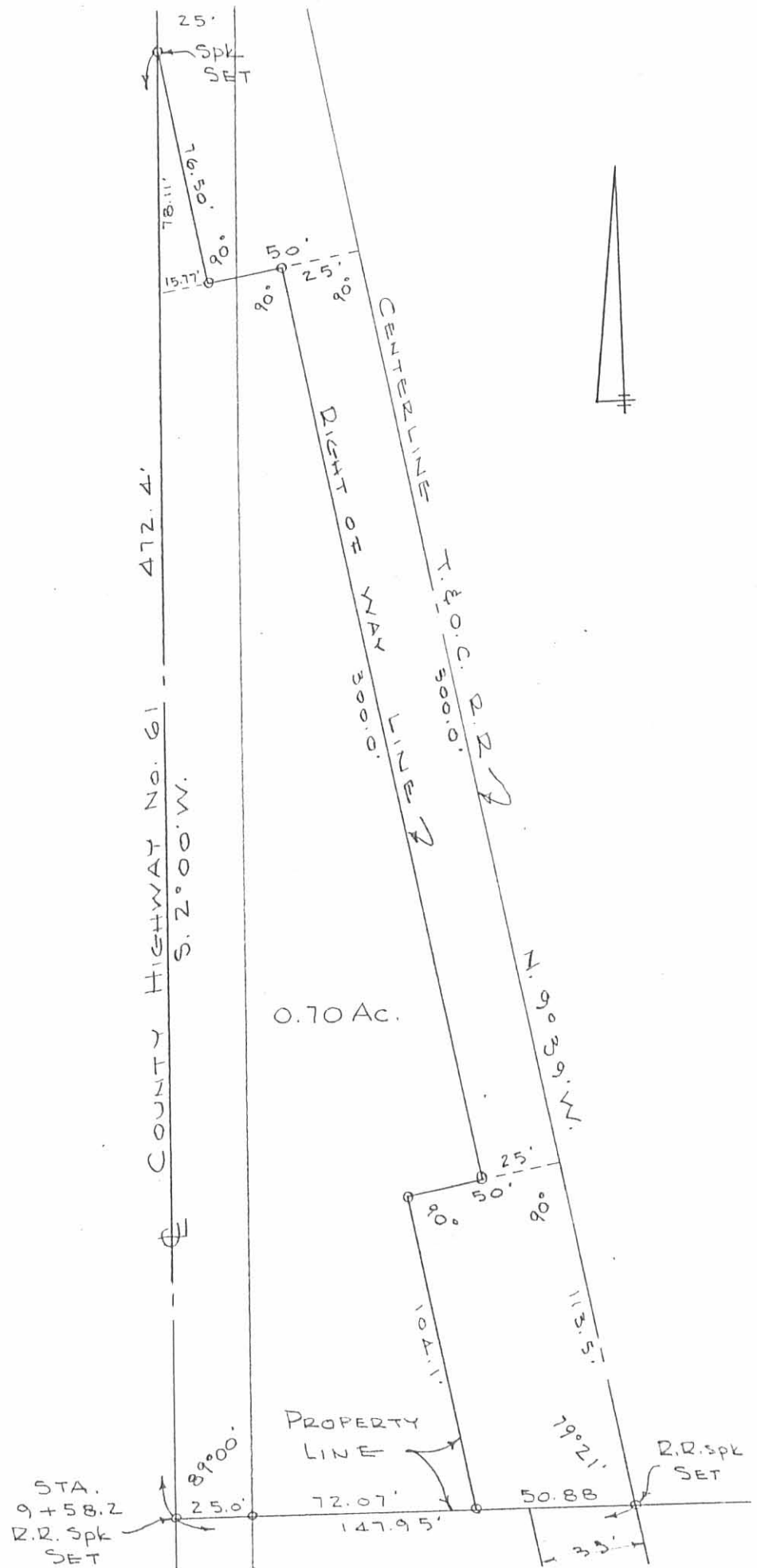
C. H. No. 61; thence with the centerline of said C. H. No. 61,
S.2° 00'W. 472.4 feet to the place of beginning.

Containing 0.70 of an acre more or less.

The above described tract being part of Lillian Hoover's 19.00
acre tract.



HOOVER SURVEY
 SEC. 13 T-7S. R-8E.
 WASHINGTON TOWNSHIP
 LOGAN COUNTY, OHIO
 OCTOBER 5, 1968
 SCALE 1" = 50'
 0 = 5/8" ϕ BAR SET



DAN L. DODSON
 REG. SURVEYOR 4270
 BELLEFONTAINE, O
 F.B. 15/61

INDEXED ON MAP
 68DD 1P



Lee Surveying and Mapping Co., Inc.



Land Surveys • Topography • Subdivisions • Construction Layout

117 N. Madriver Street
Bellefontaine OH 43311

Phone: (937) 593-7335
Fax: (937) 593-7444

HIRSCHFELD AGRI-SERVICE, INC. 2.717 ACRES

Lying in Section 13, Town 7, Range 8, Washington Township, Logan County, Ohio.

Being all of the Hirschfeld Agri-Service, Inc. 2.5 acre tract as deeded and described in Volume 406, Page 809 of the Logan County Records of Deeds and being more particularly described as follows:

Beginning at a 1/2 inch iron rod found on the south line of Section 13 and the center-line of County Highway 37 at the intersection with the center-line of County Highway 54 (Center Street).

THENCE, with the south line of Section 13 and the center-line of County Highway 37, (60 feet wide), S 87°-11'-36" W, a distance of 53.35 feet to a 5/8 inch iron rod set at the TRUE POINT OF BEGINNING.

THENCE, with the south line of Section 13 and the center-line of County Highway 37, S 87°-11'-36" W, a distance of 249.77 feet to a 1/2 inch by 2 inch iron bar found at the center-line of County Highway 61.

THENCE, with the center-line of County Highway 61, (60 feet wide), N 2°-00'-35" W, a distance of 656.21 feet to a railroad spike found.

THENCE, with the south line of the Shirley J. Kilgore 0.70 acre tract, (O.R. 89, Pg. 821), N 86°-59'-25" E, a distance of 110.87 feet to a 5/8 inch iron rod set on the westerly line of the Dayton Power and Light Company 45.25 acre tract, parcel 9, (O.R. 329, Pg. 713), passing a 5/8 inch iron rod set at 25.00 feet.

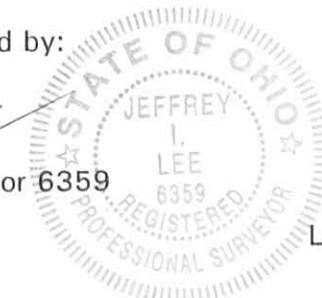
THENCE, with the westerly line of the Dayton Power and Light Company tract, S 13°-59'-15" E, a distance of 669.24 feet to the point of beginning, passing a 5/8 inch iron rod set at 638.66 feet.

Containing 2.717 acres, of which 0.600 acre is within the highway right-of-way.

The basis for bearings is the center-line of County Highway 61, being N 2°-00'-35" W, and all other bearings are from angles and distances measured in a field survey by Lee Surveying and Mapping Co., Inc. on August 12, 1998.

Description prepared by:

Jeffrey I. Lee
Professional Surveyor 6359
August 19, 1998



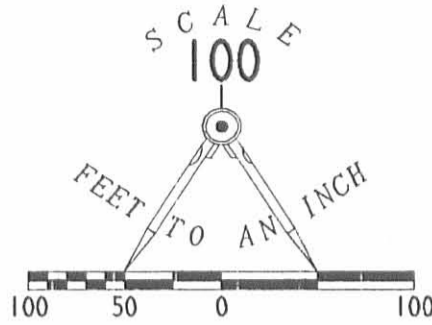
L-2667

ORIGINAL STAMP IN GREEN

INDEXED ON MAP
6800 2D

LEGEND

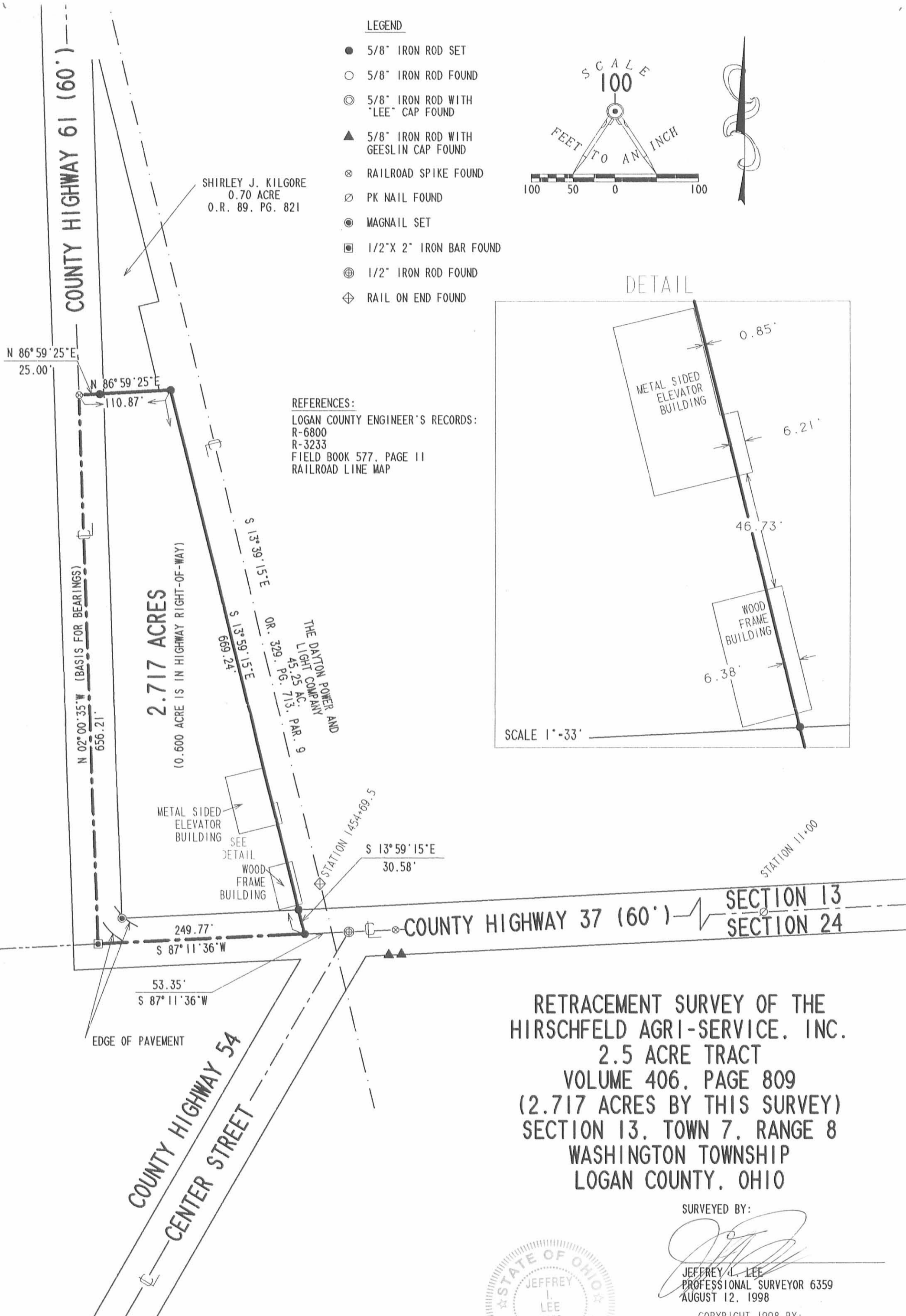
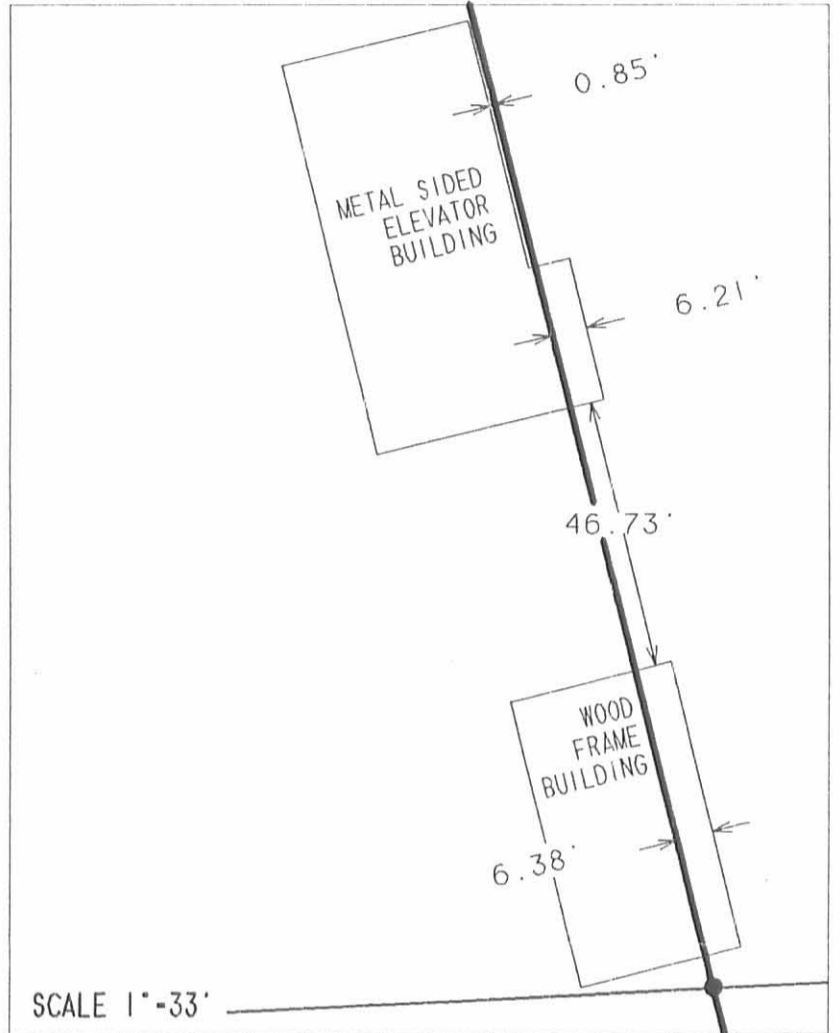
- 5/8" IRON ROD SET
- 5/8" IRON ROD FOUND
- ⊙ 5/8" IRON ROD WITH "LEE" CAP FOUND
- ▲ 5/8" IRON ROD WITH GEESLIN CAP FOUND
- ⊗ RAILROAD SPIKE FOUND
- ⊘ PK NAIL FOUND
- MAGNAIL SET
- 1/2" X 2" IRON BAR FOUND
- ⊕ 1/2" IRON ROD FOUND
- ⊕ RAIL ON END FOUND



SHIRLEY J. KILGORE
0.70 ACRE
O.R. 89. PG. 821

REFERENCES:
LOGAN COUNTY ENGINEER'S RECORDS:
R-6800
R-3233
FIELD BOOK 577, PAGE 11
RAILROAD LINE MAP

DETAIL



RETRACEMENT SURVEY OF THE
HIRSCHFELD AGRI-SERVICE, INC.
2.5 ACRE TRACT
VOLUME 406, PAGE 809
(2.717 ACRES BY THIS SURVEY)
SECTION 13, TOWN 7, RANGE 8
WASHINGTON TOWNSHIP
LOGAN COUNTY, OHIO

SURVEYED BY:

Jeffrey L. Lee
JEFFREY L. LEE
PROFESSIONAL SURVEYOR 6359
AUGUST 12, 1998



ORIGINAL STAMP IN GREEN

COPYRIGHT 1998 BY:
LEE SURVEYING & MAPPING CO., INC.
117 North Madriver Street
BELLEFONTAINE, OHIO 43311
(937) 593-7335

2 WORKING DAYS
BEFORE YOU DIG
CALL TOLL FREE 800-362-2764
OHIO UTILITIES PROTECTION SERVICE

INDEXED ON MAP
6800 2P

DEC 15 11 18-09 8M/OK

**SURVEY FOR HEIBY OIL
INGRESS/EGRESS EASEMENT
October 28, 2009**

The following described ingress/egress easement is situated in the State of Ohio, County of Logan, Township of Washington, Section 13, Town 7, Range 8, being over part of Triple K Farms, LLC's 2.717 acre tract described in Official Record 861, page 102, and said easement being more particularly described as follows:

Beginning for reference at a railroad spike found at the intersection of the centerline of County Road 61 (60 feet wide) with the centerline of County Road 37 (60 feet wide) and the centerline of County Road 54, said spike being in the south line of said Section 13 and in the north line of Section 24, Town 7, Range 8;

Thence South 87°11'36" West (assumed bearing) 240.07 feet, following the centerline of County Road 61, the south line of said Section 13, and the north line of said Section 24, passing at 53.35 feet a 5/8 inch iron rod found at the southeast corner of said 2.717 acre tract, thereafter following the south line of said 2.717 acre tract to a point marking the **place of beginning**;

Thence **South 87°11'36" West 63.04 feet**, following the centerline of County Road 61, the south line of said 2.717 acre tract and said Section 13, and the north line of said Section 24, to a 1/2 inch by 2 inch iron bar found at an angle point in the centerline of County Road 61;

Thence **North 02°00'35" West 526.69 feet**, entering said Section 13 and following the centerline of County Road 61 and the west line of said 2.717 acre tract, to point, said point bearing South 02°00'35" East 129.52 feet from a railroad spike found at the northwest corner of said 2.717 acre tract;

Thence **North 87°59'25" East 99.00 feet**, entering said 2.717 acre tract, to a point;

Thence **South 02°00'35" East 340.31 feet** to a point;

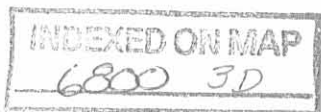
Thence **South 87°11'36" West 35.97 feet** to a point;

Thence **South 02°00'35" East 185.00 feet** to the **place of beginning**.

The above described easement is subject to all valid easements and restrictions of record.

The above description was prepared from a field survey made under the supervision of Paul R. Clapsaddle, Registered Surveyor #6140, during the month of August 2009. Bearings indicated herein are based on an assumed meridian with all others based on angles turned.

ATTEST: Paul R. Clapsaddle
Paul R. Clapsaddle, R.S. #6140
19019 West Darby Road
Marysville, Ohio 43040
(937) 747-2599



INGRESS/EGRESS EASEMENT FOR HEIBY OIL




STATE OF OHIO
COUNTY OF LOGAN
TOWNSHIP OF WASHINGTON
SECTION 13, TOWN 7, RANGE 8

NOTES:

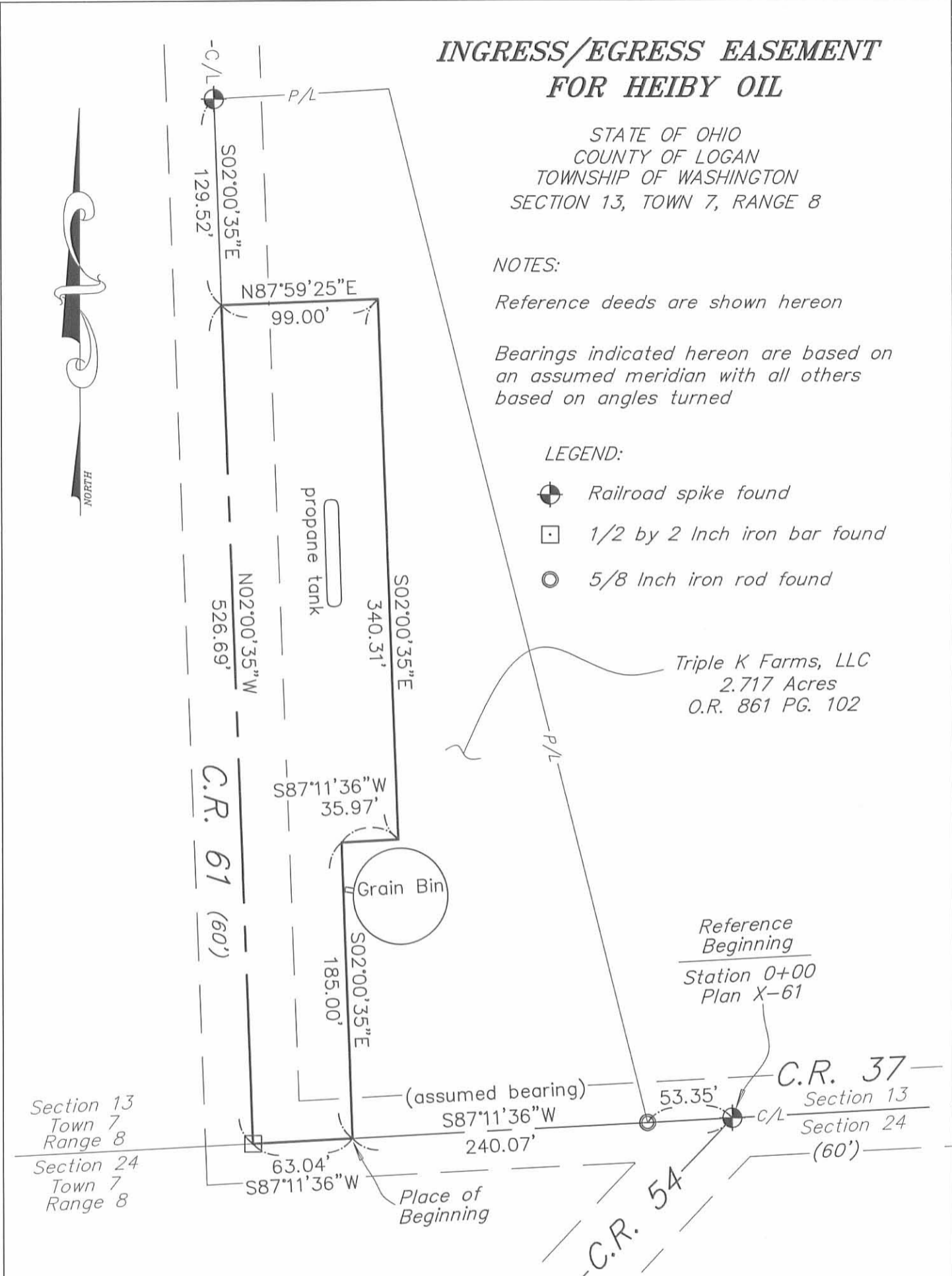
Reference deeds are shown hereon

Bearings indicated hereon are based on an assumed meridian with all others based on angles turned

LEGEND:

-  Railroad spike found
-  1/2 by 2 Inch iron bar found
-  5/8 Inch iron rod found

Triple K Farms, LLC
2.717 Acres
O.R. 861 PG. 102



Reference Beginning
Station 0+00
Plan X-61

C.R. 37
Section 13
Section 24
(60')

Section 13
Town 7
Range 8
Section 24
Town 7
Range 8

SCALE IN FEET



I hereby certify that this plat was prepared from a field survey made under my supervision and that monuments were found as indicated hereon.

Paul R. Clapsaddle
Paul R. Clapsaddle, R.S. #6140

Date: October 28, 2009
Scale: 1"=80'
Project: JamesDavidEase809
Drawing: jamesdavideaseV2809

**Paul R. Clapsaddle
and Associates**
REGISTERED ENGINEERS AND SURVEYORS

19019 WEST DARBY ROAD, MARYSVILLE OHIO 43040
(937) 747-2599

Paul R. Clapsaddle, P.E., P.S.

INDEXED ON MAP
6800 3P



Lee Surveying and Mapping Co., Inc.

Land Surveys • Topography • Subdivisions • Construction Layout

117 N. Madriver St.
Bellefontaine OH 43311



Phone: (937) 593-7335
Fax: (937) 593-7444
surveys@lsminc.us

DAYTON POWER AND LIGHT COMPANY 2.545 ACRES

Lying in Section 13, Town 7, Range 8, Washington Township, Logan County, Ohio.

Being out of the Dayton Power and Light Company 45.25 acre tract as deeded and described in Official Record 329, Page 713, Parcel No. 9 and being more particularly described as follows:

Commencing at a 1/2 inch x 2 inch iron bar found at Station 3+02, Logan County Engineer's Field Book 560, Page 60, at the intersection of the center-line of County Highway 61 (60 feet wide) and the north line of Section 24.

THENCE, with the center-line of County Highway 61 and the north line of Section 24, N 87°-11'-36"E, a distance of 249.84 feet to a 5/8 inch iron rod found at the TRUE POINT OF BEGINNING.

THENCE, with the lines of the Triple K Farms, LLC., 2.717 acre tract (O.R. 861, Pg. 102) the following two courses:

N 13°-59'-38"W, a distance of 669.26 feet to a 5/8 inch iron rod found, passing a 5/8 inch iron rod set at 30.78 feet.

S 86°-59'-25"W, a distance of 13.80 feet to a 5/8 inch iron rod set.

THENCE, with the lines of the Shirley J. Kilgore 0.70 acre tract (O.R. 89, Pg. 821) the following five courses:

N 13°-39'-35"W, a distance of 104.10 feet to a 5/8 inch iron rod set.

N 76°-20'-25"E, a distance of 25.00 feet to a 5/8 inch iron rod set.

N 13°-39'-35"W, a distance of 300.00 feet to a 5/8 inch iron rod set.

S 76°-20'-25"W, a distance of 25.00 feet to a 5/8 inch iron rod set.

N 13°-39'-48"W, a distance of 76.51 feet to a MAG nail set.

THENCE, with the center-line of County Highway 61, N 02°-00'-35"W, a distance of 410.95 feet to a MAG nail set.

THENCE, with the lines of the Lillian M. Hoover, Trustee 20.25 acre tract, (O.R. 151, Pg. 508, Tract I, Parcel 5) the following two courses:

S 13°-39'-58"E, a distance of 227.21 feet to a 5/8 inch iron rod set.

N 86°-59'-25"E, a distance of 17.30 feet to a 5/8 inch iron rod set.

THENCE, with the west of the Lillian M. Hoover, Trustee 18.5 acre tract, (O.R. 151, Pg. 508, Tract I, Parcel 4), S 13°-39'-58"E, a distance of 671.50 feet to a 5/8 inch iron rod set.

THENCE, with the lines of the Gary E. Herren 8.90 acre tract (O.R. 1033, Pg. 199) the following four courses:

S 86°-59'-25"W, a distance of 7.12 feet to a 5/8 inch iron rod set.

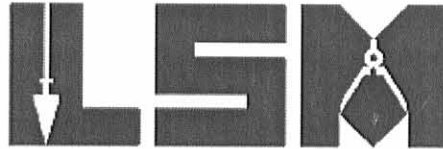
S 13°-39'-58"E, a distance of 445.26 feet to a 5/8 inch iron rod set.

INDEXED ON MAP
6800 4D-1

Lee Surveying and Mapping Co., Inc.

Land Surveys • Topography • Subdivisions • Construction Layout

117 N. Madriver St.
Bellefontaine OH 43311



Phone: (937) 593-7335
Fax: (937) 593-7444
surveys@lsminc.us

S 86°-59'-25"W, a distance of 10.18 feet to a 5/8 inch iron rod set.

S 13°-39'-58"E, a distance of 223.51 feet to a MAG nail set, passing a 5/8 inch iron rod set at 192.96 feet.

THENCE, with the north line of Section 24, the center-line of County Highway 37 (60) and the center-line of County Highway 61, S 87°-11'-36"W, a distance of 66.89 feet to the point of beginning, passing a railroad spike found on the center-line of County Highway 54 (Center Street) at 13.59 feet.

Containing 2.545 acres of which 0.317 acre is within the highway right-of-way.

Property is subject to any and all previous easements and rights-of-way of record.

The basis for bearings is the center-line of County Highway 61, being N 87°-11'-36"E, and all other bearings are from angles and distances measured in a field survey by Lee Surveying and Mapping Co., Inc. on February 28, 2012.



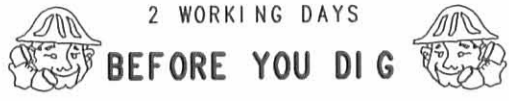
Description prepared by:

A handwritten signature in cursive script that reads 'William K. Bruce'.

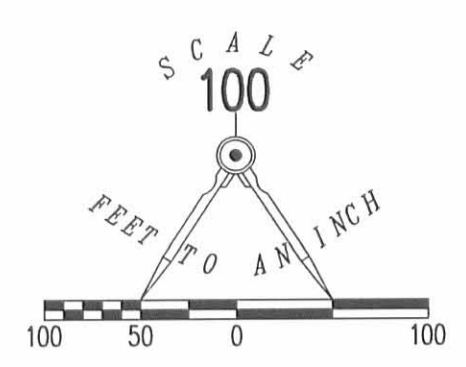
William K. Bruce
Professional Surveyor 7437
March 1, 2012

L-52780212





CALL TOLL FREE 800-362-2764
OHIO UTILITIES PROTECTION SERVICE

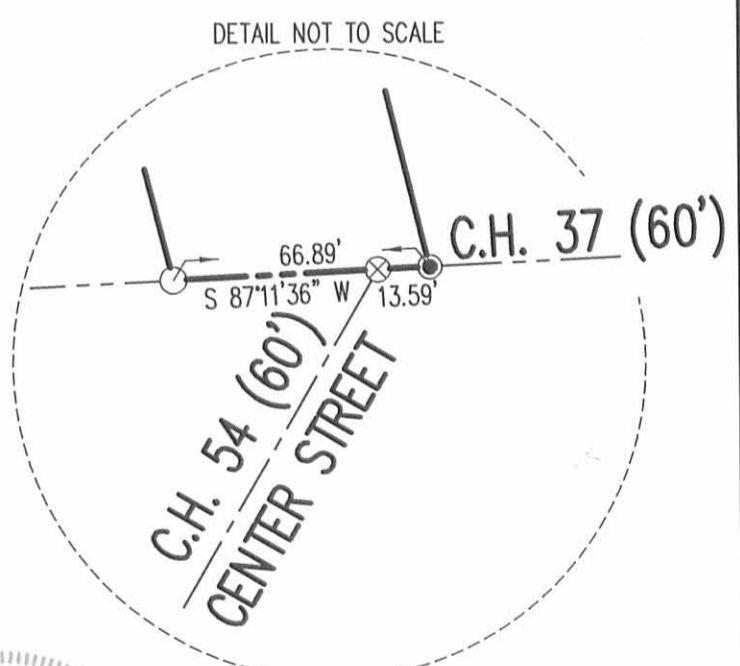
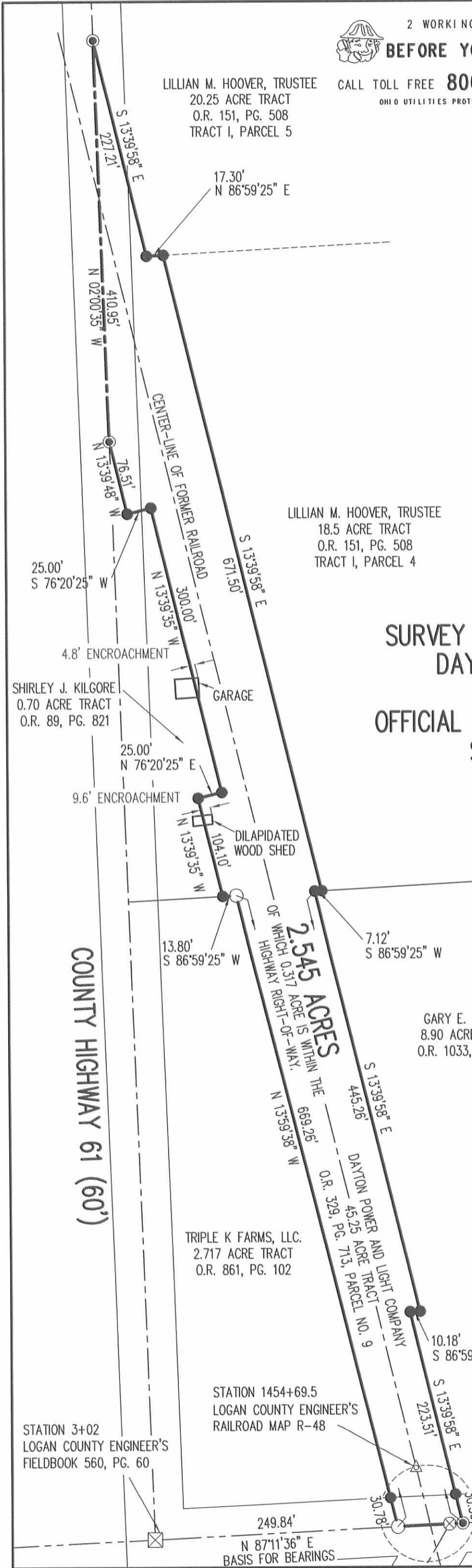


- LEGEND
- 5/8 INCH IRON ROD SET WITH PLASTIC I.D. CAP STAMPED "LSM 7437"
 - 5/8 INCH IRON ROD FOUND
 - MAG NAIL SET
 - ⊗ RAILROAD SPIKE FOUND
 - ⊠ 1/2 INCH X 2 INCH IRON BAR FOUND
 - △ RAIL ON END FOUND

LILLIAN M. HOOVER, TRUSTEE
20.25 ACRE TRACT
O.R. 151, PG. 508
TRACT I, PARCEL 5

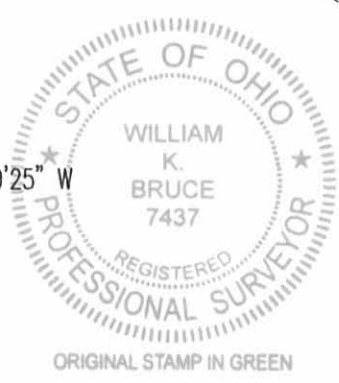
LILLIAN M. HOOVER, TRUSTEE
18.5 ACRE TRACT
O.R. 151, PG. 508
TRACT I, PARCEL 4

**SURVEY OF A 2.545 ACRE TRACT OUT OF THE
DAYTON POWER AND LIGHT COMPANY
45.25 ACRE TRACT
OFFICIAL RECORD 329, PAGE 713, PARCEL NO. 9
SECTION 13, TOWN 7, RANGE 8
WASHINGTON TOWNSHIP
LOGAN COUNTY, OHIO**



GARY E. HERREN
8.90 ACRE TRACT
O.R. 1033, PG. 199

TRIPLE K FARMS, LLC.
2.717 ACRE TRACT
O.R. 861, PG. 102



SURVEYED BY:
6800 4P
INDEXED ON MAP

William K. Bruce
WILLIAM K. BRUCE
PROFESSIONAL SURVEYOR 7437
FEBRUARY 28, 2012
COPYRIGHT 2012 BY:
LEE SURVEYING & MAPPING CO., INC.
117 North Madriver Street
BELLEFONTAINE, OHIO 43311
(937) 593-7335
WWW.LSMINC.US
surveys@lsminc.us
ADW D0212 52780212 L-5278-3

STATION 3+02
LOGAN COUNTY ENGINEER'S
FIELDBOOK 560, PG. 60

STATION 1454+69.5
LOGAN COUNTY ENGINEER'S
RAILROAD MAP R-48

SEE DETAIL
SECTION 13
SECTION 24

249.84'
N 87°11'36" E
BASIS FOR BEARINGS