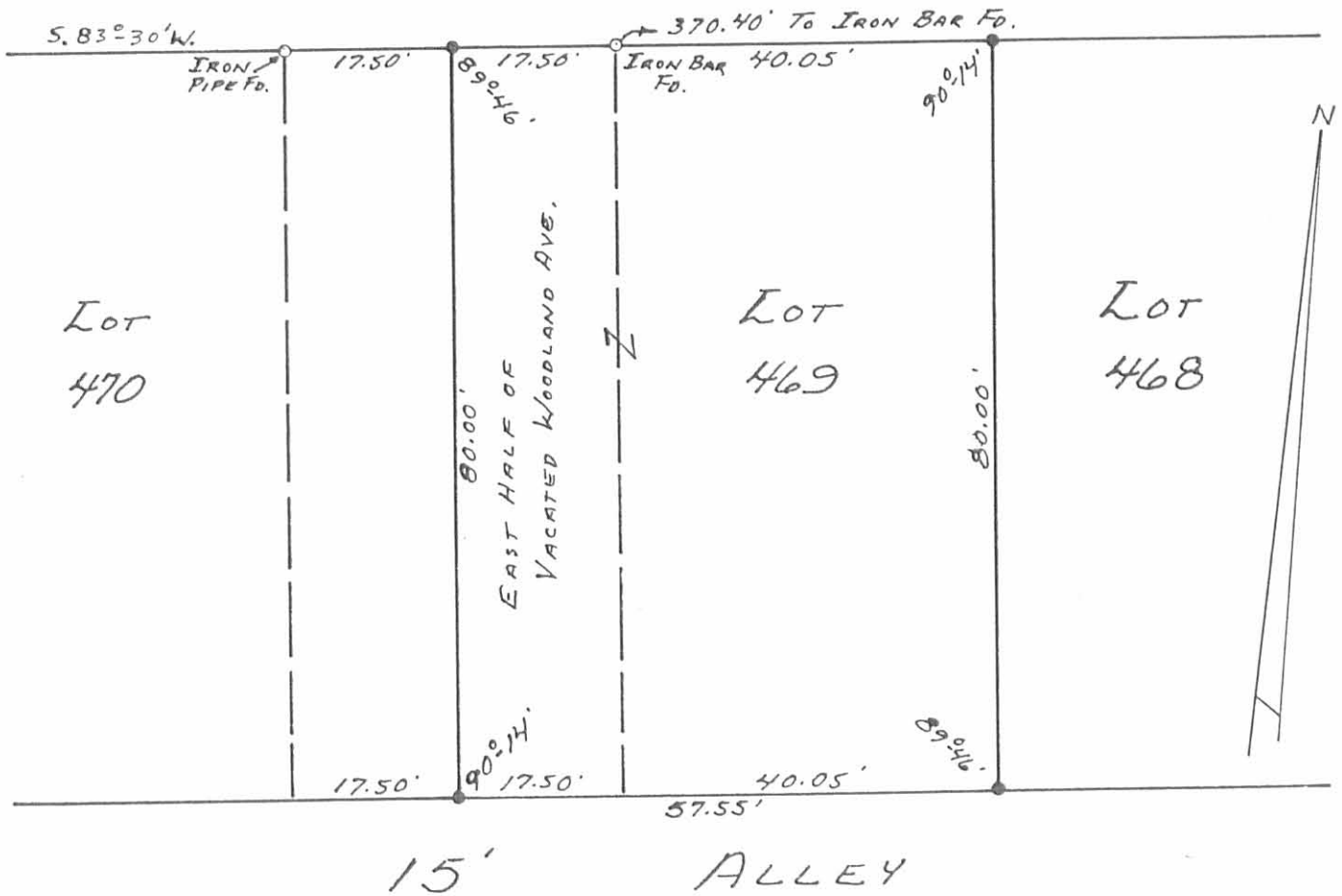


PARK STREET - 35'



● - 5/8" X 30" REBARS SET.

7037 IP

INDEXED ON MAP

SURVEYED AND PLATTED BY:
 DANIEL E. GILBERT, P.S.
 REG. SUR. NO. 5402
 1041 N. MAIN ST.
 BELLEFONTAINE, OHIO 43311

SURVEY OF LOT NO. 469
 EAST HALF OF WOODLAND AVENUE
 ORCHARD ISLAND
 WASHINGTON TOWNSHIP
 LOGAN COUNTY, OHIO
 MARCH 31, 1984

SCALE: 1" = 20'