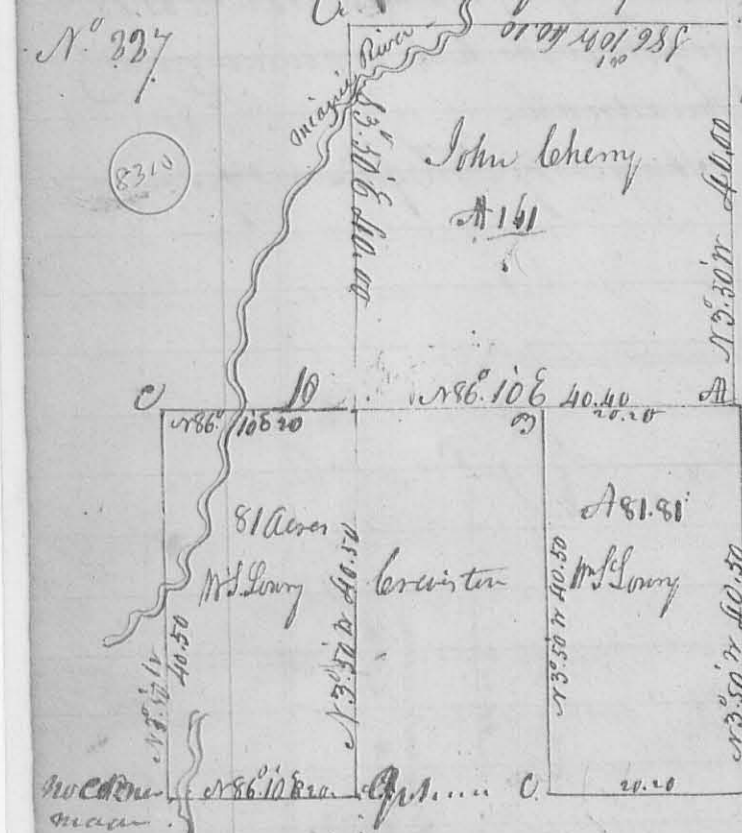


Sept. 14<sup>th</sup> 1833 Sub-divided Section N<sup>o</sup> 72 & 12  
 T<sup>o</sup> R 8 E for Wm. S. Lowry & others as follows -  
 the South half of S 12 and E half of the S E q<sup>r</sup> of S 13  
 for Wm. S. Lowry as shown by the Plat with the length  
 of the lines therein marked in form of old chains -  
 Course of the lines S. 50<sup>o</sup> W of a true meridian -  
 also at the same time surveyed the SW q<sup>r</sup> of S  
 13 for Isaac Cooper shown as above, also the  
 West half of the S. E q<sup>r</sup> of S 13 for Joseph  
 also the SW q<sup>r</sup> and West half of the S. E q<sup>r</sup> of S 13  
 for Penick, containing each as marked  
 for quantity on the Plat  
 D. Hopkins depy Surveyor G.



Description of corners - Corner at  
 A. Beech 82 S 22 E 24 Links 61<sup>o</sup> N 13 W 11.2  
 B. 12. Eyo 182<sup>o</sup> S 46 21. B. Ark 20<sup>o</sup> N 33 W 20 Links  
 C. Ark 18<sup>o</sup> N 26 W 37. 92<sup>o</sup> Ark 22<sup>o</sup> S 22 49 Links  
 D. Hornwood 32<sup>o</sup> S 66 W 13 B. 13<sup>o</sup> Ark. 15<sup>o</sup> N 31 W 24 -  
 Surveyed for J<sup>o</sup> Leheny Sept. 14. 1833  
 Beginning  
 description of the Corners of Mrs. Lowry's lot being  
 E half S. E q<sup>r</sup> of above section. Beginning as above  
 B. Beech 182<sup>o</sup> N 70 W 8 B. Red oak 24. 2. S 16 20<sup>o</sup>  
 C. Ark 61<sup>o</sup> S 86 W 15. B. Beech 122<sup>o</sup> East 19.4  
 D. SW Corners of 12. 16 of M. Surveyed as above -  
 also Surveyed for Mrs. Lowry another lot  
 as shown below, lying West of corner to lot

being E half of SW q<sup>r</sup> of the foregoing section, corners & dist. marked on the plat -  
 Description of corners at A. Ark 20<sup>o</sup> N 36 W. N. O. 182<sup>o</sup> S 5 30 E.  
 Corner at B. Red Elm 24<sup>o</sup> N 16 W. Hickory 12<sup>o</sup> S 47 28  
 do at C. Maple 182<sup>o</sup> S 41 W 25. Ark 182<sup>o</sup> N 52 W 22  
 do at D. Hornwood 2<sup>o</sup> S 66 W 13 B. 13<sup>o</sup> Ark. 15<sup>o</sup> N 31 W 24 -  
 The foregoing plat represents one Survey the lands all lie springing and were Surveyed  
 as one Survey Sept. 15<sup>th</sup> 1833  
 D. Hopkins depy Surveyor G.