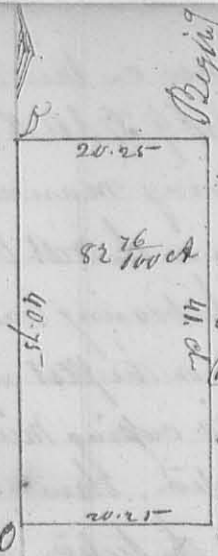


N^o 228



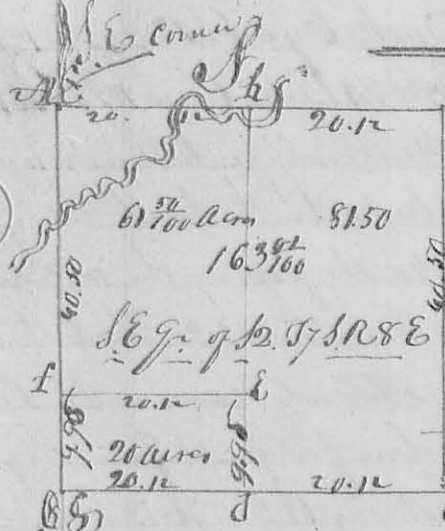
A Surveyed May 1833 for Jonathan Lorton
 the E half of the SW q^r of S23 T3R13 W2S. as follows. Begin
 ning at the interior q^r corner at a Beech 12th N 39^o 59' E.
 a Rod a Beech 8th S 70^o 23 Links. thence South 41 chains to a
 Beech 12th North 10 E. 50 8th S 60^o 9' E thence West with the
 South line of the section 20 ch. 25 L to a Beech 18th S 61^o 33 Links
 and same 22 E. S. N 7^o 39' E thence North 40 ch. 75 Links to a
 Beech 12th South 8 E. 50 10th S 76 34. thence N 89 56
 20 chain, 25 links to the beginning containing Eighty two and twenty six
 hundredths of an acre -
 D Hopkins depy. S. L.

8311

8312

Surveyed September 18th 1833 for M. J. Alex. Sitke tract a part of
 S22 T3R8 E the W 1/2 of S E q^r & W 1/2 of N E q^r of the foregoing section
 as follows. Beginning on the north boundary 80 poles West of the N E
 corner of the section at Gauley oak 6th S 32^o E 88 Links N. 30th S
 S. or 121 links. thence S 33^o E 80 ch. 25 links to a White Oak 22th S
 78^o 12 links. 50 20th S 86^o 47 links. thence S 86^o 10^o W 7 ch. to a stake in
 a prairie in the line of a tract of land sold granted by Congress to
 Nancy Stewart and heirs. thence N 20^o W to the N E corner of said
 N. Stewart's tract. thence S 72^o W to a point that a line bearing S 35^o E
 from the q^r corner on the north line of the section will strike this point. then
 N 35^o W 78.75 links to the q^r corner on the north line of the section. thence
 N 86^o 10^o E 20 chains to the beginning. Containing 156. Acres
 D Hopkins depy. S. L.

N^o 229

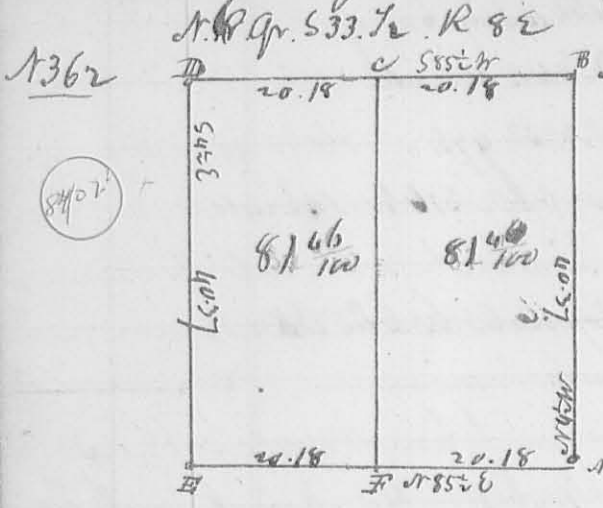


B. orig. corner. Notes y^e ✓
 1st AB S 86^o 10^o W 40.25 ch. crossing river 2 times to orig. corner
 BC S 33^o 50^o W 40.50 ch. to corner at C. thence
 CG N 86^o 10^o E 40.25 to the N E corner of the q^r. thence
 GA S 33^o 50^o E 40.50. crossing the R. River to the beginning
 containing 163^{7/100} acres - but divided as follows into
 two Equal parts. beginning on the South line of the
 q^r at the "a" & "b" corner box. thence N 35^o 50^o W 40 50
 chain to "d". a Maple 14th S 83^o 07 27 links. an Ash 18th S 10^o N 40 links
 then off the north end of the east half of said q^r. laid off 20 acres as above
 thence. corner at "e". Beech 12th N 76^o E 35 50 or S 55^o W 30 links. corner at "f"
 Beech 8th S 109^o W 19 E. 50 10th S 37^o W 27^o. at G N E corner of the q^r. orig. corner.
 Sept-18. 1833
 D Hopkins, depy. S. L.

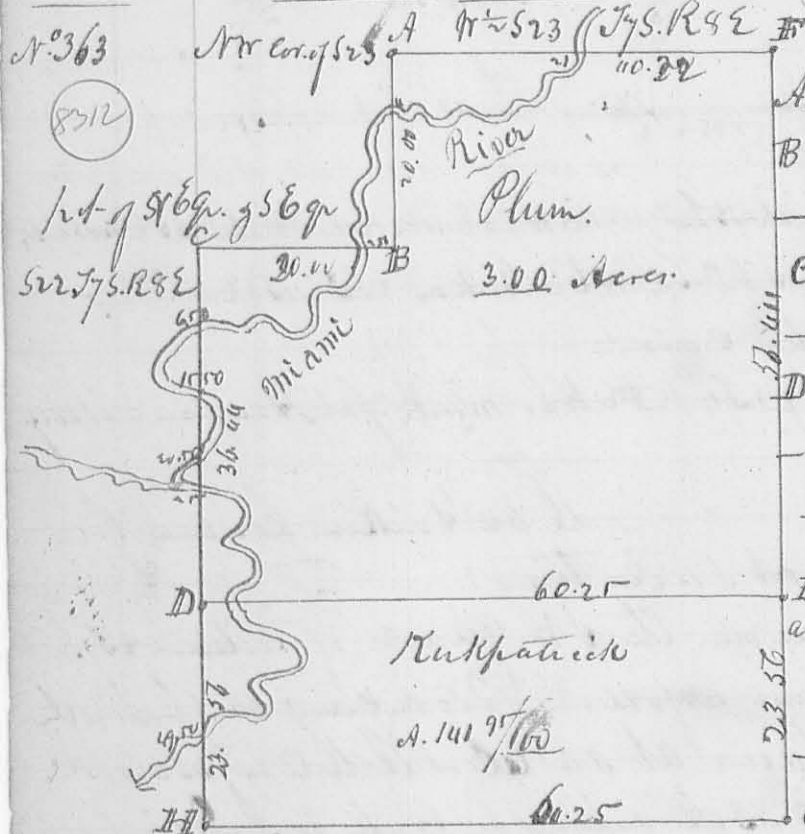
8313

1362 January 1837

Corner



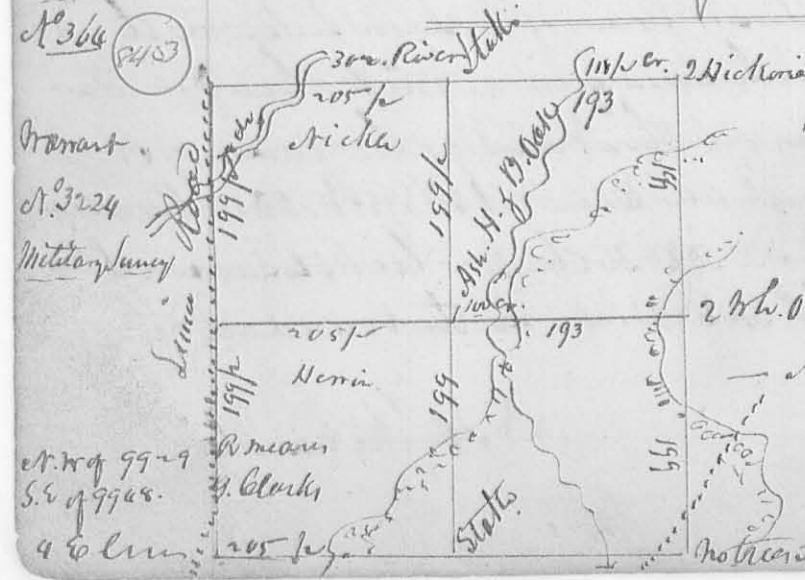
At A. Orig. q. Corner.
 B. N. E. Corner of the Sect.
 C. Elm 18 S. D. 527 W. 10 S. S. 1/2 Sec. 2. S. 69 E. 65
 D. q. Corner between 533. & 28.
 E. Sugar 8. S. D. 530 W. 17 S. N. 1000 4. 587 = E. 19 S.
 F. Sugar 6. N. 66 E. 36 S. Sugar 569 W. 7 S. S. 1/2 Sec. -
 Surveyed June 27, 1837.
 L. A. Hopkins Sur. G.



Description of Corner
 A. N. W. corner of 523. 75. R. 9 E.
 B. W. Oak 20 In. dia. S. 85 1/2 E. 34 S. S. 1/2 Sec.
 - Ditto 18 .. " N. 84 W. 88 ..
 C. Beech 30 S. D. 574 E. 9 ..
 - Ironwood 2 .. " N. 62 W. 6 ..
 D. Gray Ash 24 .. " N. 31 W. 29 ..
 - Jack O. 4 .. " S. 18 E. 36 ..
 E. W. Oak 22 .. " S. 84 E. 30 ..
 - ditto 12 .. " N. 15 E. 48 ..
 F. q. Corner between 523 & 75.
 G. q. Corner on south line of 23.
 H. Buckeye 15 S. D. N. 42 E. 8 1/2 S. S. 1/2 Sec.
 I. Hickory 8 .. " S. 89 W. 46 ..

The foregoing Survey was made for Mr. Kirkpatrick June 28, 1837
 L. A. Hopkins S. G.

Wm. Hopkins
 J. P. Cherry Ch. Men.



This Survey on West of N. 3224
 was divided East and West by me
 February 3, 1837. the line N. P. having
 been previously made.
 2 W. O. Grubs. between two W. O. Oaks.
 - N. 1/2 Sec. Present bearing.
 L. A. Hopkins Co. Sur. G.

at. N. of 99-29
 S. of 99-28.
 4 to line