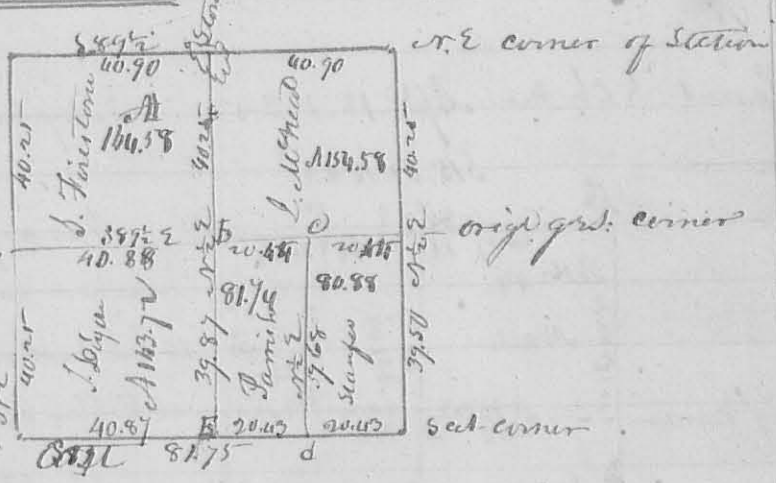


C Survey of the W. gr. of S. 6. T. 2. R. 14. N. 1. and E. half of S. E. gr. of S. 12. T. 2. R. 14. and W. half of S. E. D. the whole of the S. W. gr. of S. 12. T. 2. R. 14. for Mr. Randon

and John Randon. Adm. of 9th 1834 beginning at the N. W. corner of Section N. 12. then S 89° E 120 ch. passing at 60 ch. corner at A between said Randon on their south line a Red Elm S 20° S 68 W 9 Links, and Red Elm 40° N 76 E 22 Links to corner at B. on the center of the south line of Sect. 6. a White Oak 12° W. N 45 E 27 Links. D. 18° S 110 E 33 Links. then N 2 E 40 chains to White Oak 18° W. N 35 E 70 Links. D. 26° W 142 W 118 Links. then S 89° W 120 ch. passing corner at C. at 60 chains a W. Oak 60° N 60 W 7 Links and Bur. Oak 30° S 196° 52 Links. to White Oak 22° W. N 60 W 22 Links. D. 22° E. L. D. 170 E 30 Links. then S 2° W 40 chains to the beginning. containing 240 acres, or 120 acres to each. tot. P. Shale. Elijah Blake ch. carrier. D. Hopkins Surveyor

N. 938
Survey and sub. division of S. 35. T. 3. R. 14. N. 1. S. 1. W. cor.



Description of corners not marked on the plat. at a. center of west line Stone planted at White Oak 22° E D 136 W 60 links and White Oak 12° W N 7 E 98 Links. at b White Oak 18° W S 18 E 19 Links. and White Oak 12° W N 9 E 66 Links. at c White Oak Grub 2 L. D. Corner tree. at d Stone. e Bur Oak Grub 2 L. D. S 75 E 26 links and L. D. N 38 W 11 links. John D. George & Muffin ch. men. D. Hopkins dep. Surveyor Feb. 9th 1834.

N. 939 Survey of 9th 1834 for Mr. Rogers part of S. 15. T. 3. R. 8. E. beginning at center of east line of the section then S 3° 50' E 60.37. dogwood 20° N 40 E 28 L. S. and 8 L. D. S. 46 L. then N 86. 10° E 20.12 to W. O. 4 L. D. S 68 W 113. Bush 12° W N 75 E 19 L. then N 3° 50' W 60.37 to an ash 40° S 22° W 7 L. Bur. O. 18° N 22° E 7 L. then S 86° 10' W 20.12 to beginning. Cont. 7. 12 L. D. L. D. White Oak 12° W N 75 E 19 L. D. Rogers ch. carrier. D. Hopkins dep. S. L. C.