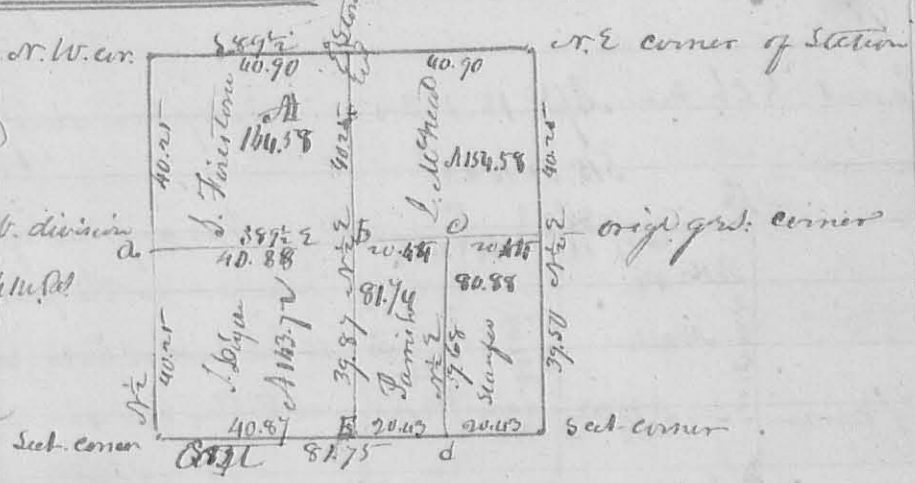


C Survey of the NW qr. of S. 6. T. 2 R. 14 N. and E half of S. E. qr. of S. 12 T. 2 R. 14. and W. half of S. E. D. the whole of the SW qr. of S. 12. for Mr. Randon

and John Randon. Admoy 9d 1834 beginning at the N.W. corner of Section N. 12. then S 89° E 120 ch. passing at 60 ch. corner at A between said Randon on their south line a Red Elm S 20° S 68 W 9 Links, and Red Elm 40° N 76 E 22 Links to corner at B. on the center of the south line of Sect. 6. a White Oak 12 S 15 E 27 Links. D 18 S 10 E 33 Links. then N 2 E 40 chains to White Oak 18 S 13 E 70 Links. D 26 S 14 W 118 Links. then N 89° W 120 ch. passing corner at C. at 60 chains a W. Oak 60° N 60 W 7 Links and Bur. oak 30 S 15 E 52 Links. to White Oak 22 S 16 W 22 Links. D 22. ln. dr. 170 E 30 Links. then S 2 W 40 chains to the beginning. containing 240 acres, or 120 acres to each. tot. P. Shale. Elijah Blake ch. carrier. D Hopkins Surveyor

N. 938
 Survey and sub. division of S. 5. T. 3. R. 14 N. 1834



Description of corners not marked on the plat. at a. center of west line Stone planted at White Oak 22 S 16 W 60 links and White Oak 12 S 15 E 27 Links. at b White Oak 18 S 13 E 70 Links, and White Oak 12 S 15 E 27 Links. at c White Oak 22 S 16 W 22 Links. and White Oak 12 S 15 E 27 Links. at d Stone. C Bur Oak 30 S 15 E 52 links and Linn S 13 E 70 Links. John D & George K Muffin ch. men. D Hopkins depy Surveyor Feb 7d 1834.

N. 939 1834 for Mr. Rogers part of S. 15. T. 3. R. 14. beginning at center of east line of the section then S 35.50° E 60.37. dogwood 20 S 40 E 28 S 30 E 8 S 10° S 46 S then N 86. 10 E 20.12 to W. O. 4 S 68 W 113. Back 12 S 15 E 27. then N 35.50° W 60.37 to an ash 4 S 22 W 7 L. Bur. O. 18 N 22 E 7 S then S 86. 10 W 20.12 to beginning. Cont. 7. 12 1/2 ac. Linn. White Oak 12 S 15 E 27 Links. John Rogers ch. carrier. D Hopkins depy. S. L.